

| | |
|----------------|-------------------|
| PRODUCT NUMBER | BPS8B96FLD2CAZ1LF |
|----------------|-------------------|

- LEAD FREE VERSION
- CONTACT PLATING
- ALCATEL LOW PROFILE COVER + SCREW
- AWG WIRE SIZE 24/26
- ROWS A,B,C LOADED
- NO. OF CONTACTS

NOTES:-

1. THE "LF" PRODUCTS MEET EUROPEAN UNION DIRECTIVES AND OTHER COUNTRY REGULATIONS AS DESCRIBED IN GS-22-008
2. LEAD FREE OR RoHS DIRECTIVE LABELING TO BE PROVIDED AS PER GS-14-920 FOR RoHS COMPATIBLE VERSION.

PERFORMANCES CHARACTERISTICS

VOLTAGE RATING : 250 VAC (rms)
CURRENT RATING : 1.5 A AT 25 °C, 1 A AT 70 °C.
INSULATION RESISTANCE : 1000MΩINITIAL, 100MΩMIN. AFTER TEST
DIELECTRIC WITHSTANDING VOLTAGE : 1000 VAC (rms).
CONTACT RESISTANCE : 15mΩMAX. INITIAL, 5mΩMAX. RISE
OF INITIAL VALUE AFTER TEST.

OPERATING TEMPERATURE*: -40 °C TO +125 °C.
 INSERTION FORCE : 1 N MAX./CONTACT.
 WITHDRAWAL FORCE : 0,2 N MIN./CONTACT.

*DEPENDING ON THE CABLE, THE MAX. TEMPERATURE CAN BE LOWER.
 FOR STANDARD PVC INSULATED CABLE : 105 °C MAX.

CONSTRUCTION

BODY MATERIAL : GLASS-REINFORCED THERMOPLASTIC (UL94V-0).
COVER MATERIAL : PPO, BLACK COLOUR
CONTACT MATERIAL : PHOSPHOR BRONZE.
CONTACT FINISH : GOLD OVER NICKEL IN CONTACT AREA
Sn (MATTE TIN) ON I.D.C. TERMINAL
Z1 : PERFORMANCE LEVEL AS PER DIN 41612 CLASS 2
OPTIONAL : TIE WRAP: MAX WIDTH = 3.9mm

PART NUMBERS

BPS8B96FLD2CAZ1LF CONNECTOR FOR WIRE SIZE AWG 24/26
(CONTACT IDENTIFICATION : 2).

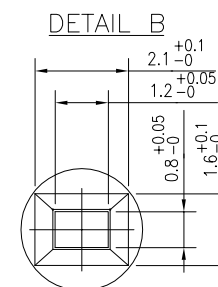
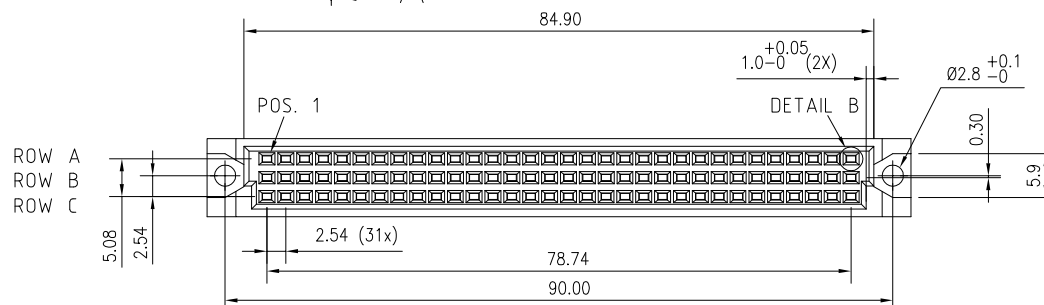
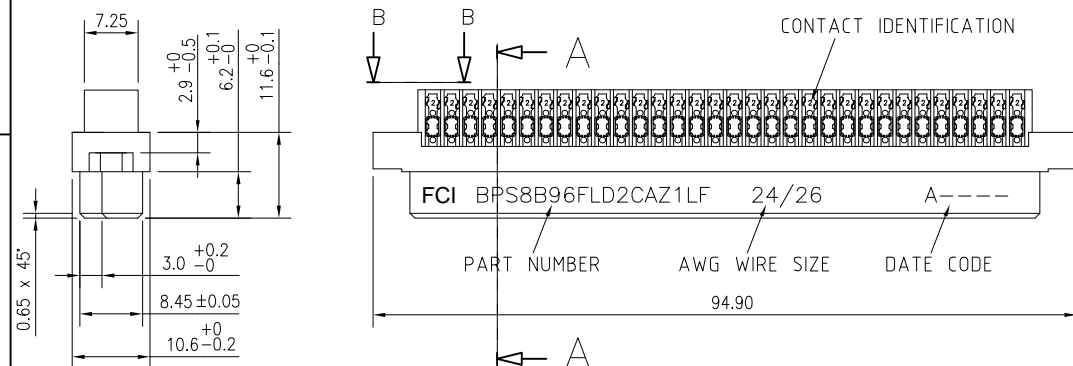
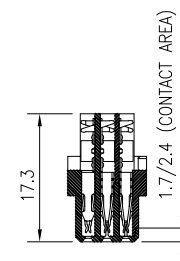
AWG WIRE SIZE MARKING

BPS8B96FLD2CAZ1LF : 24/26.

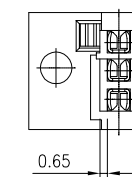
DATECODE MARKING

A + YEAR & WEEKCODE, EXAMPLE : A0650.

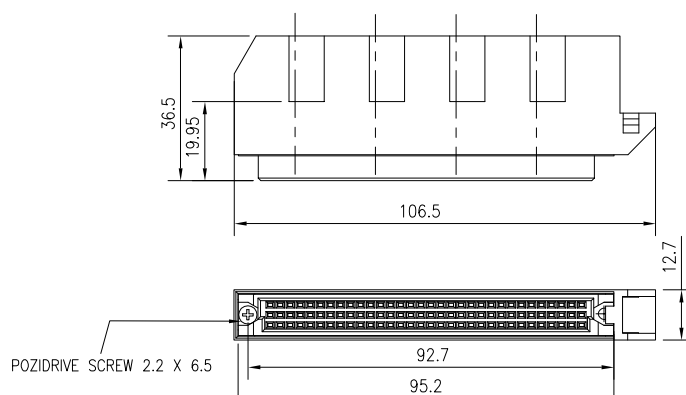
SECTION AA



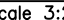


VIEW BB



ASSEMBLED VIEW



| | | | | | | | | | | | | | | | |
|--------------------------|-----------|----------------|----|------------|---------------------------------------|------------------|-------------------------------|------------|---|---|------------------------|-------------------------------|--------------|---------|----------|
| mat'l. code SEE NOTES | | | | | surface ISO 1302 ✓ | | tolerance ISO 406 ISO 1101 | | projection  | | product family BPS8 | | | | |
| ltr | ecn | no | dr | date | tolerances unless otherwise specified | | | | |  mm | | title COVER SET | | | |
| b | 027-03-09 | | JS | 2009-03-13 | angles | | linear | | 0.1 ±0.2 0.01 ±0.1 | | | 96. POS LOW PROFILE COVER SET | | | |
| | | | | | ±1° | | | | scale 3:2 | | dwg no | | sheet 1 of 1 | size | |
| | | | | | dr | MINI.K.VANDANATH | | 2006-09-18 | |  | | 55370 | | A | |
| | | | | | engr | KESAVAN R | | 2009-03-13 | | | | type | | Product | Customer |
| | | | | | chr | JOHN SLEEBA | | 2009-03-13 | | | | Drawing | | | |
| | | | | | appt | KESAVAN R | | 2009-03-13 | | | | | | | |
| sheet index | | revision sheet | | b | 1 | | | | | | | | | | |

Mouser Electronics

Authorized Distributor

Click to View Pricing, Inventory, Delivery & Lifecycle Information:

[FCI / Amphenol:](#)

[BPS8B96FLD2CAZ1LF](#)