

PRODUCT NUMBER

20020203-XXXXXXLF

20020203-□□□□A0□LF

PITCH

C: 3.50 mm
D: 3.81 mm
G: 5.00 mm
H: 5.08 mm

POLES

02: 2 POLES
03: 3 POLES
04: 4 POLES
:
:
16: 16 POLES

LF : DENOTED RoHS COMPATIBLE

2 : TAPE & REEL PACKAGING

PROPERTY TABLE				
FCI SERIES NAME	06-350	06-381	06-500	06-508
PITCH (mm)	3.50	3.81	5.00	5.08
VOLTAGE RATING (VAC)	300	300	300	300
CURRENT RATING (A)	10	10	12	12
WITHSTANDING VOLTAGE (kV)	1.6	1.6	1.6	1.6
OPERATING TEMP. (°C)	-40~+65	-40~+65	-40~+65	-40~+65
SOLDERING TEMP. (°C)	250±10 (5 sec.)	250±10 (5 sec.)	250±10 (5 sec.)	250±10 (5 sec.)
POLES AVAILABLE	02~16	02~16	02~12	02~12
SAFETY CERTIFICATE	PENDING			

HOUSING CODE

CODE	COLOR	PROCESS
6	BLACK(RAL 9005)	PIP(NOTE 6)

NOTES:

1.MATERIAL:

1-1. TERMINAL: COPPER ALLOY, TIN PLATED.

1-2. HOUSING: THERMOPLASTIC RESIN, UL94V-0 RATED.

2. PRODUCTION SPECIFICATION REFER TO FCI GS-12-625.

3. PRODUCT PACKING SPECIFICATION REFER TO FCI GS-14-1394.

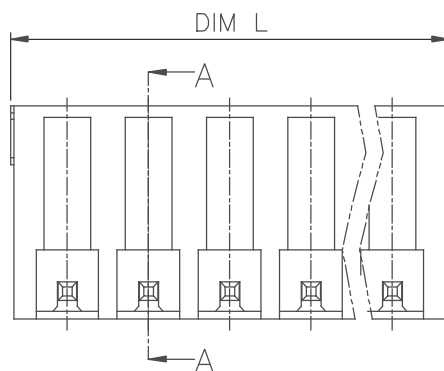
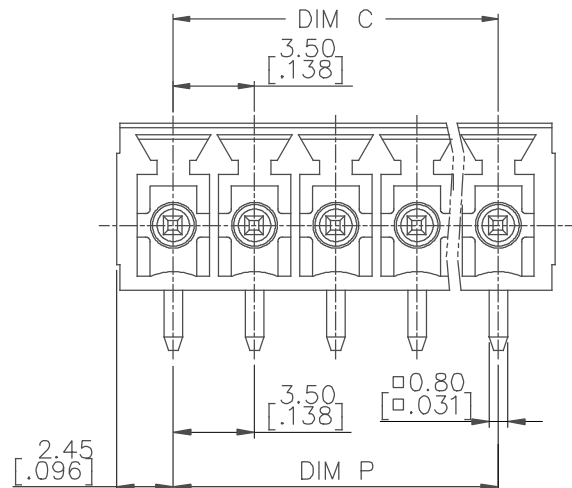
4. FCI, SAFETY CERTIFICATE LOGO AND SERIES NAME TO BE SHOWN ON PRODUCT SURFACE.

5. THE PRODUCTS WHERE THE PART NUMBER END IN "LF" MEET THE EUROPEAN UNION DIRECTIVE AND OTHER COUNTRY REGULATIONS AS DESCRIBED IN GS-22-008.

6. THE HOUSING WILL WITHSTAND EXPOSURE TO 260°C PEAK TEMPERATURE FOR 5 SECONDS IN A CONVECTION, INFRA-RED OR VAPOR PHASE REFLOW OVEN.

mat'l. code				surface ASME Y14.5	tolerance ASME Y14.5	projection 	product family TERMINAL BLOCK
ltr	ecn no	dr	date	tolerances unless otherwise specified			title
A		LS	071912	angles	X.±0.5		TERMINAL BLOCK
					X.X±0.3		PLUGGABLE SOCKET/RIGHT ANGLE(PIP)
				X'±1'	X.XX±0.1	scale	dwg no
				dr	LEIF SHEN	041911	sheet 1 of 5 size
				enr	LEIF SHEN	041911	20020203
				chr	LEIF SHEN	041911	A4
				appd	JOSEPH HSIA	041911	type
sheet index	revision sheet	A	A	A	A	A	CUSTOMER Drawing
		1	2	3	4	5	

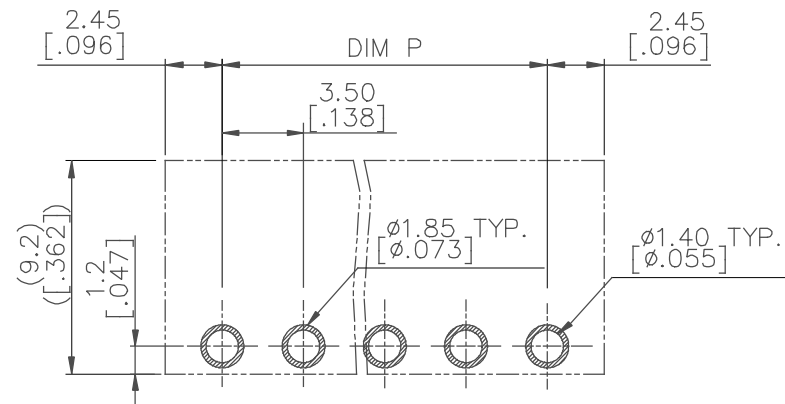
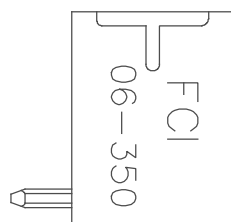
PRODUCT NUMBER	SERIES NAME	PITCH
20020203-CXXXXXXLF	06-350	3.50 mm



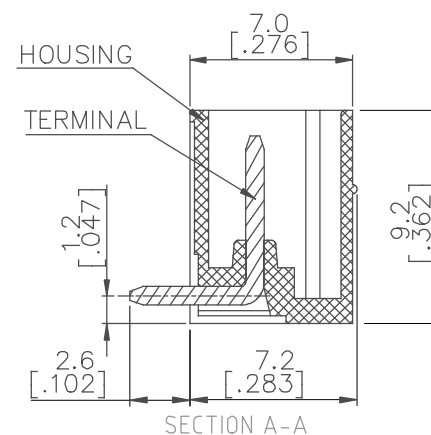
N= Number of poles

DIM L	$(N-1) \times 3.5 [.138] + 4.9 [.193]$
DIM P	$(N-1) \times 3.5 [.138]$
DIM C	$(N-1) \times 3.5 [.138]$

POLES	TOLERANCE
2-6p	$\pm 0.15 [.006]$
7-12p	$\pm 0.20 [.008]$
13-16p	$\pm 0.30 [.012]$



RECOMMENDED PCB LAYOUT



SECTION A-A

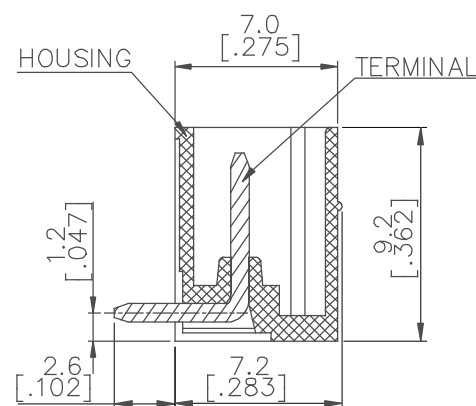
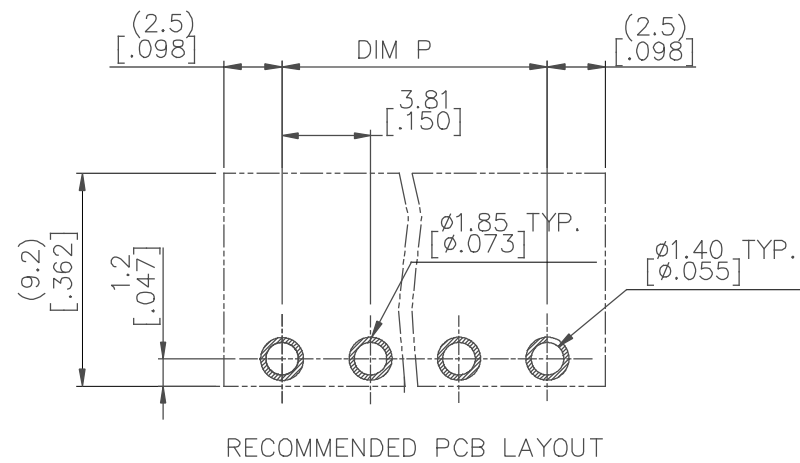
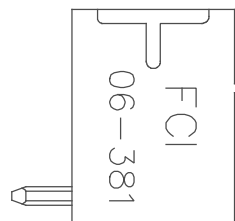
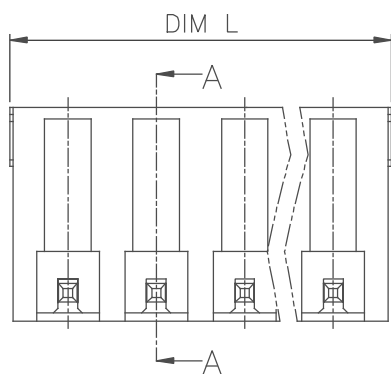
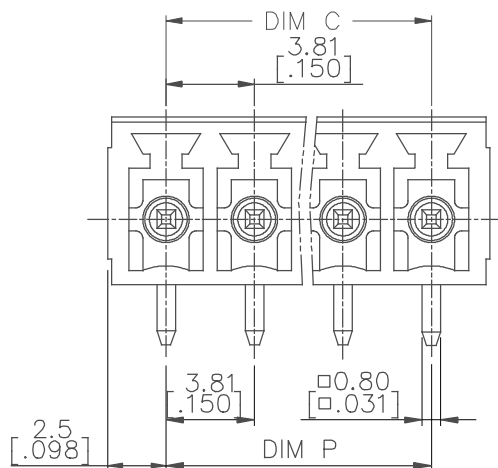
mat'l. code		surface	tolerance	projection	product family
		ASME Y14.5	ASME Y14.5		TERMINAL BLOCK
ltr	ecn no	dr	date	title	
A				TERMINAL BLOCK PLUGGABLE SOCKET/RIGHT ANGLE(PIP)	
		angles		MM [INCH]	
		X'±1'		scale	
		dr	LEIF SHEN 041911	dwg no	
		enrg	LEIF SHEN 041911	sheet 2 of 5 size	
		chr	LEIF SHEN 041911	20020203	
		appd	JOSEPH HSIA 041911	A4	
		sheet index	revision sheet	type	
				CUSTOMER Drawing	

PRODUCT NUMBER	SERIES NAME	PITCH
20020203-DXXXXXXLF	06-381	3.81 mm


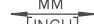

N = NUMBER OF POLES

DIM L	$(N-1)*3.81[.150]+5.0[.197]$
DIM P	$(N-1)*3.81[.150]$
DIM C	$(N-1)*3.81[.150]$

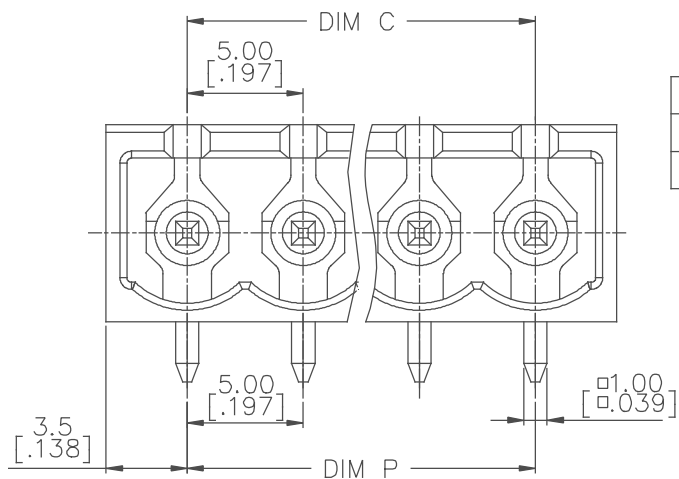
POLES	TOLERANCE
2p-6p	$\pm 0.15[.006]$
7p-12p	$\pm 0.20[.008]$
13p-16p	$\pm 0.30[.012]$



SECTION A-A

mat'l. code				surface ASME Y14.5 ✓		tolerance ASME Y14.5		projection 		product family TERMINAL BLOCK																									
ltr		ecn no		dr		date		tolerances unless otherwise specified										title																	
A								angles		linear		X.±0.5		MM 		TERMINAL BLOCK PLUGGABLE SOCKET/RIGHT ANGLE(PIP)																			
								X'±1"				X.XX±0.1		scale																					
								dr		LEIF SHEN		041911				dwg no										sheet 3 of 5 size									
								enr		LEIF SHEN		041911				20020203										A4									
								chr		LEIF SHEN		041911																							
								appd		JOSEPH HSIA		041911																							
sheet index		revision sheet																																	

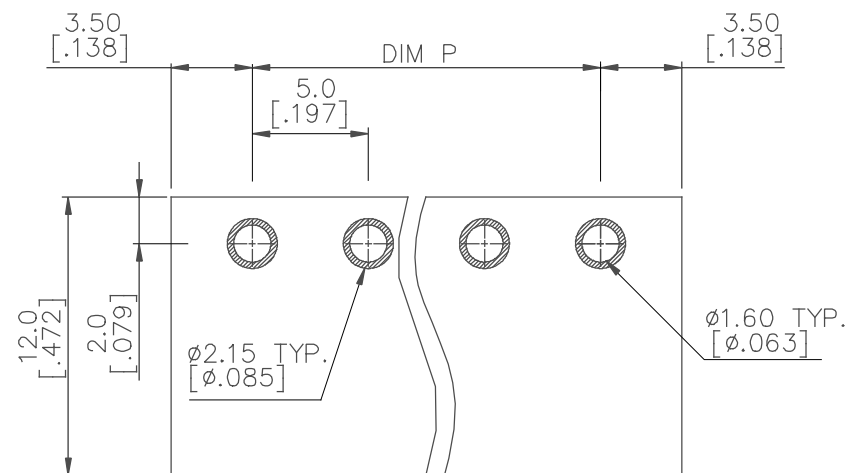
PRODUCT NUMBER	SERIES NAME	PITCH
20020203-GXXXXXXLF	06-500	5.00 mm



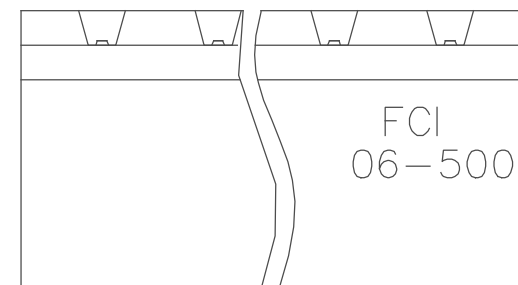
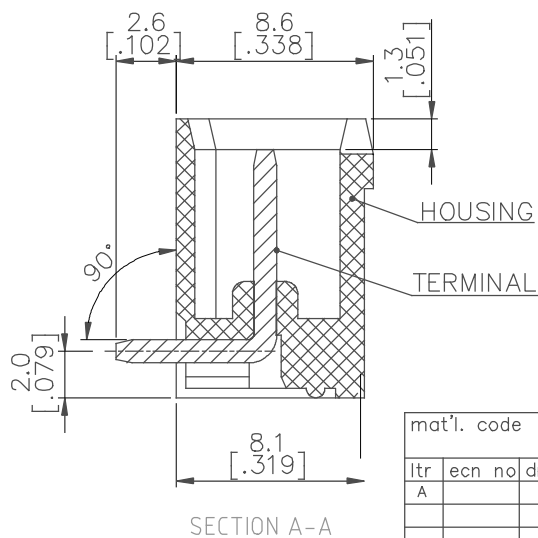
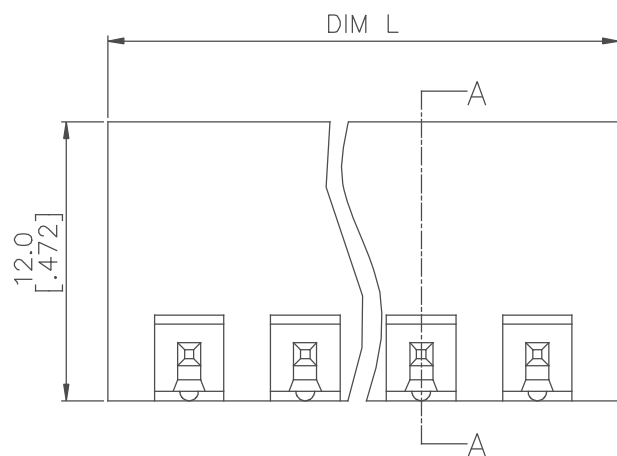
N = NUMBER OF POLES

DIM L	$N \times 5.0[.197] + 2.0[.079]$
DIM P	$(N-1) \times 5.0[.197]$
DIM C	$(N-1) \times 5.0[.197]$

POLES	TOLERANCE
2-3p	$\pm 0.15[.006]$
4-8p	$\pm 0.20[.008]$
9-12p	$\pm 0.25[.010]$

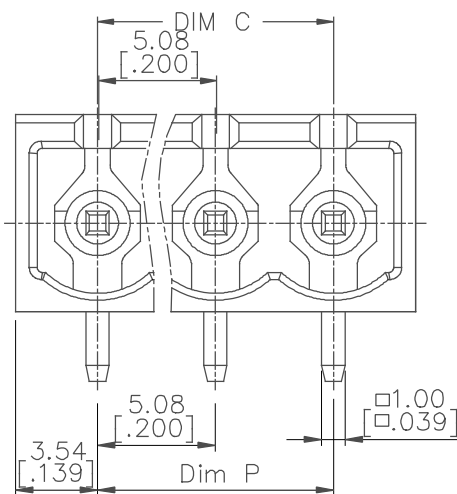


RECOMMENDED PCB LAYOUT



mat'l. code	surface	tolerance	projection	product family
	ASME Y14.5	ASME Y14.5		TERMINAL BLOCK
ltr	ecn no	dr	date	title
A				TERMINAL BLOCK
				PLUGGABLE SOCKET/RIGHT ANGLE(PIP)
				dwg no
				20020203
				sheet 4 of 5
				size
				A4
				type
				CUSTOMER Drawing
sheet index	revision sheet			

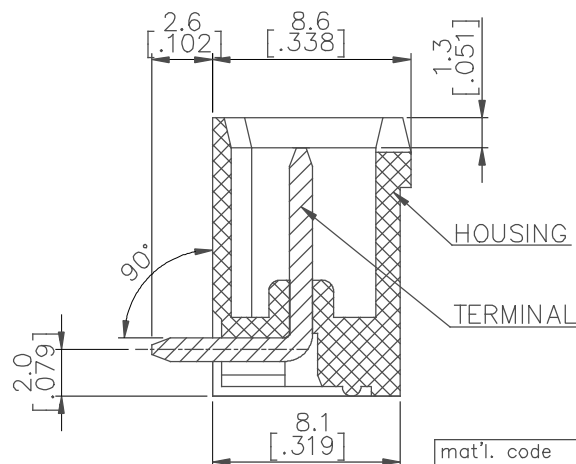
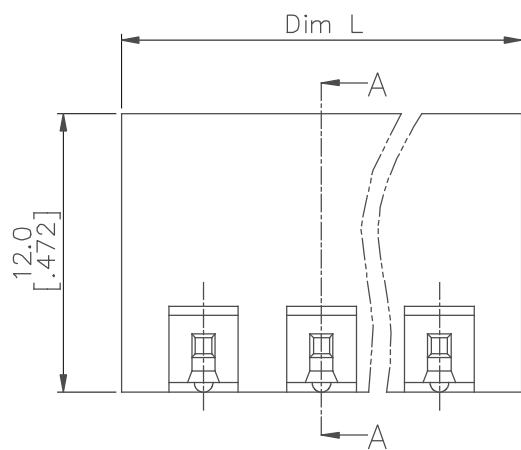
PRODUCT NUMBER	SERIES NAME	PITCH
20020203-HXXXXXXLF	06-508	5.08 mm



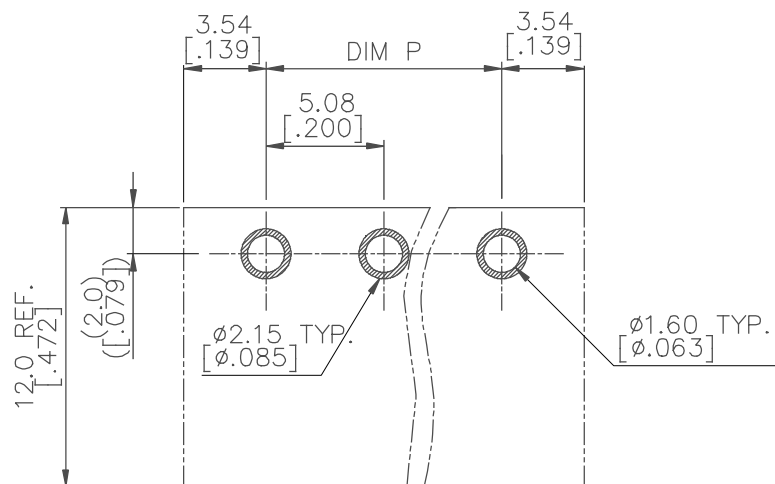
N = NUMBER OF POLES

DIM L	$N \times 5.08 [.200] + 2.0 [.193]$
DIM P	$(N-1) \times 5.08 [.200]$
DIM C	$(N-1) \times 5.08 [.200]$

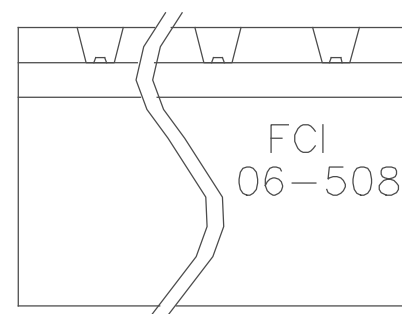
POLES	TOLERANCE
2-3p	$\pm 0.15 [.006]$
4-8p	$\pm 0.20 [.008]$
9-12p	$\pm 0.25 [.010]$




SECTION A-A



RECOMMENDED PCB LAYOUT



mat'l. code		surface ASME Y14.5 ✓	tolerance ASME Y14.5	projection 	product family TERMINAL BLOCK
ltr	ecn no	dr	date	title	
A				TERMINAL BLOCK PLUGGABLE SOCKET/RIGHT ANGLE(PIP)	
				scale MM [INCH]	sheet 5 of 5 size
				FCI	
				20020203	
				type CUSTOMER Drawing	
sheet index	revision sheet				

Mouser Electronics

Authorized Distributor

Click to View Pricing, Inventory, Delivery & Lifecycle Information:

[Amphenol:](#)

[20020203-C086A02LF](#) [20020203-H036A02LF](#) [20020203-C036A02LF](#) [20020203-D046A02LF](#) [20020203-H066A02LF](#)
[20020203-H026A02LF](#) [20020203-C126A02LF](#) [20020203-H046A02LF](#)