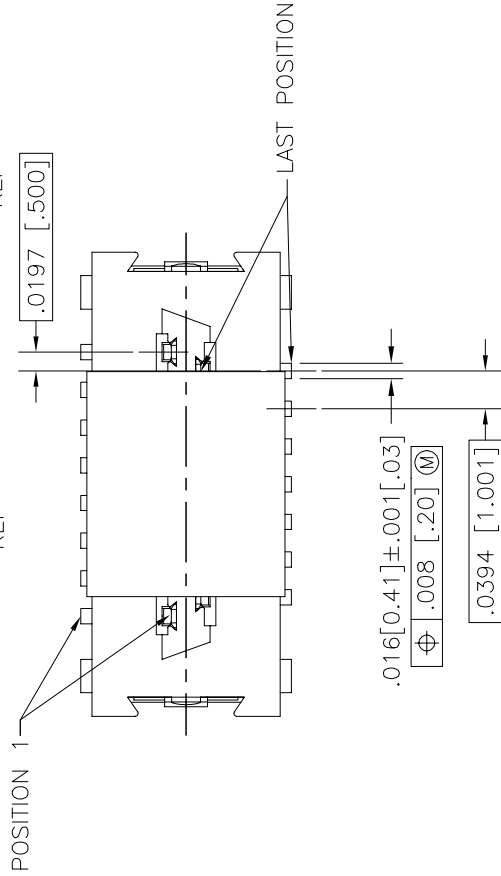
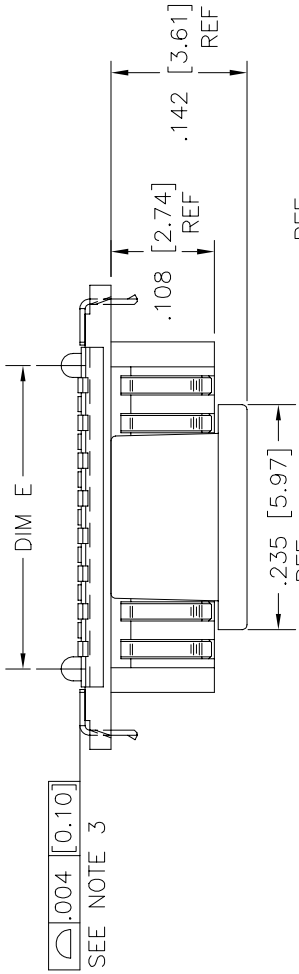
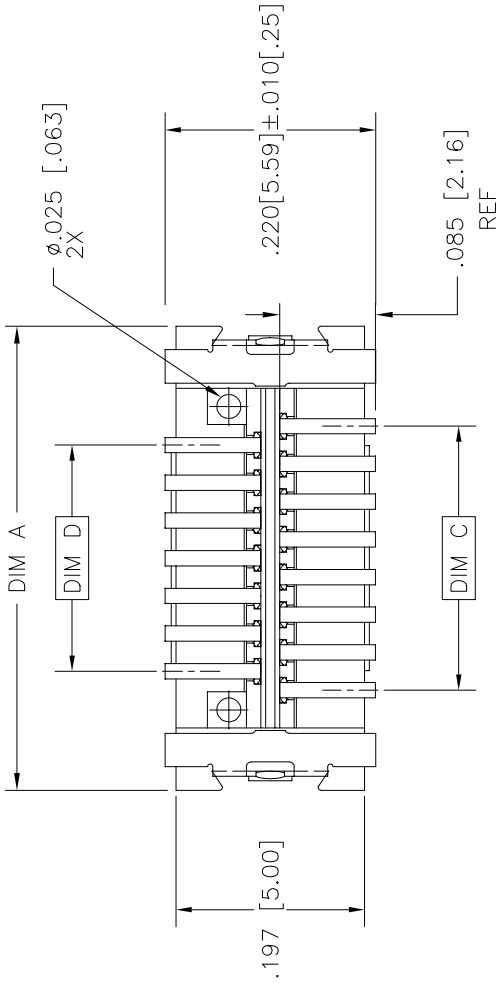


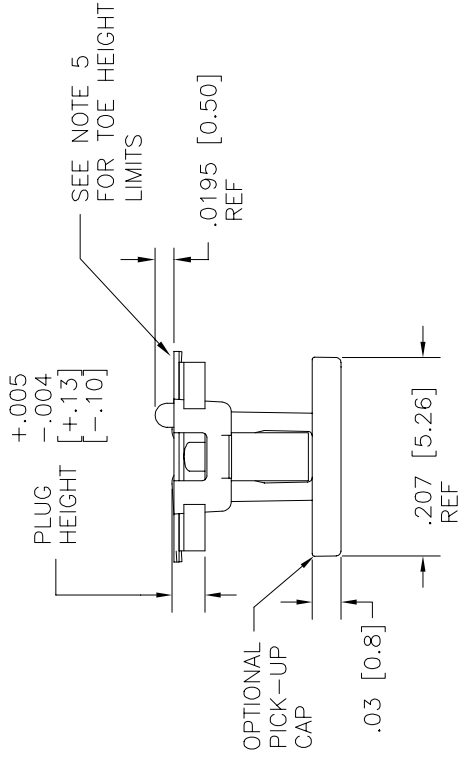
SECTION A-A
ROTATED 90°
N.T.S.

mat'l. code				surface	tolerance	projection	product family			
l	tr	ec	n	ar	date		ISO 1302	ISO 406	ISO 1101	title
A	-	-	GM	2013-01-14	angles	linear	XXL01/XXL03	XXL01/XXL03	CONAN® CONNECTOR ASSEMBLY	
B	ELX-N-13992	GM	2013-02-05	-	-	-	XXL01/XXL03	XXL01/XXL03		
-	-	-	-	-	0°±2°	-	XXL01/XXL03	XXL01/XXL03		
-	-	-	-	-	dr	GM	SUN	2013-01-14		
-	-	-	-	-	engr	GM	SUN	2013-01-14	dwg no	
-	-	-	-	-	chr	RICK	BIAN	2013-01-14	sheet 1 of 7	
-	-	-	-	-	appd	RICK	BIAN	2013-01-14	size	
sheet index				revision	B	B	B	B	10124017	A3
sheet				1	2	3	4	5	6	7
sheet				1	2	3	4	5	6	7
Product Customer Drawing									type	

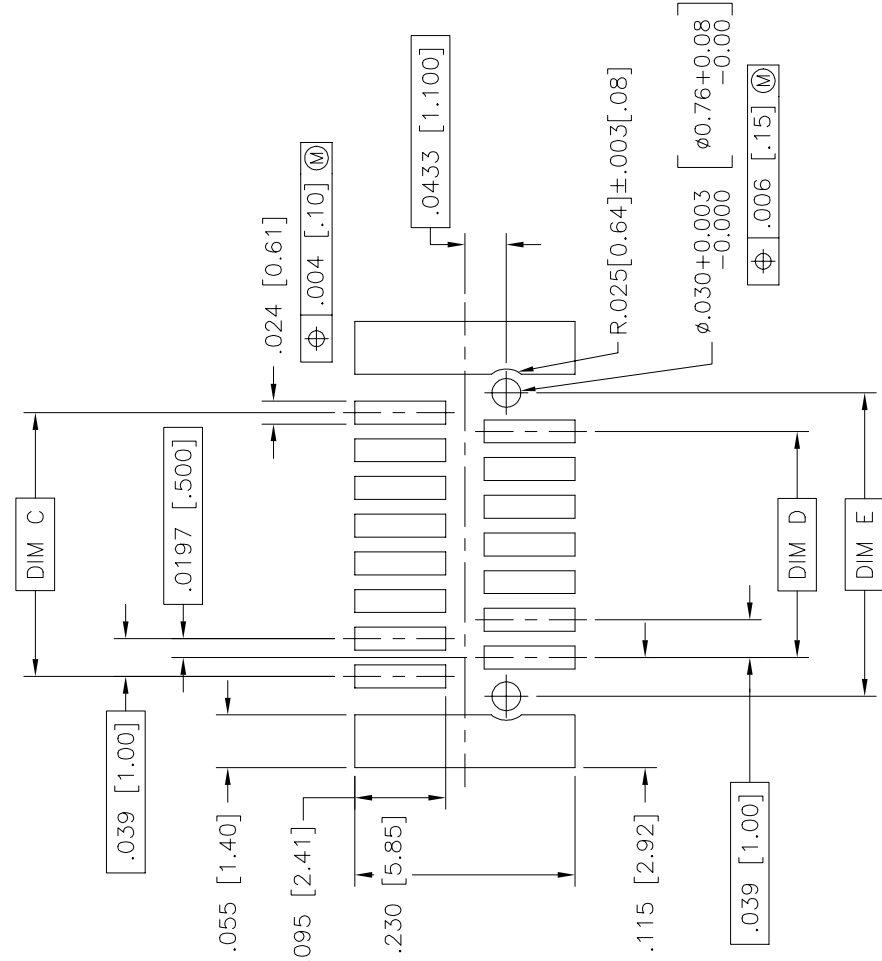
form: A3



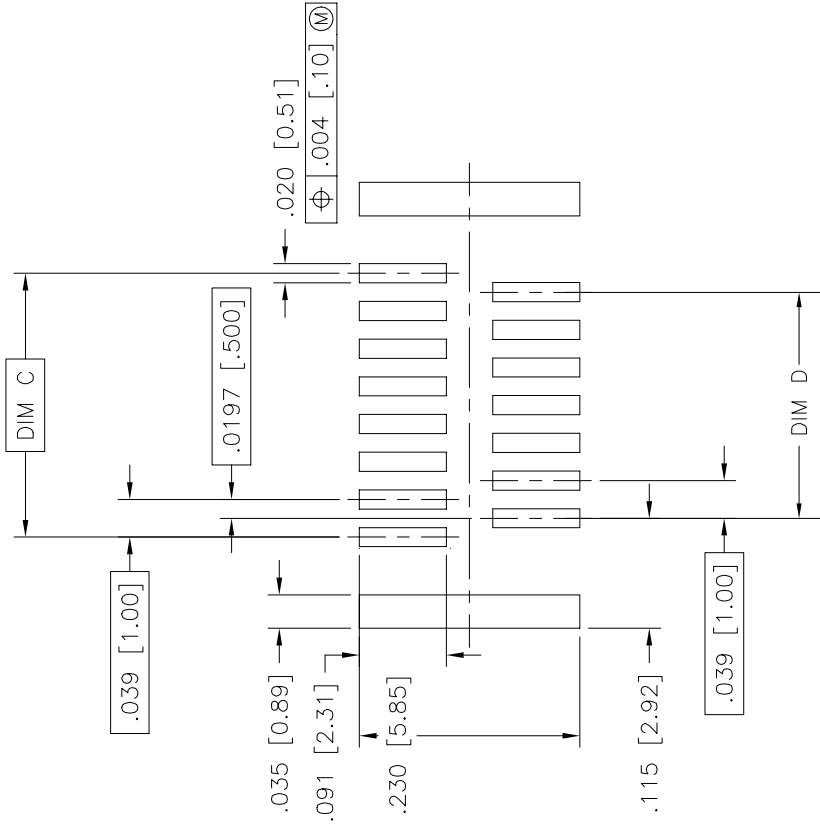
PLUG



mat'l. code		surface	tolerance	projection	product family	
B	tr	ISO 1302	ISO 406		CONAN	
	ec	date	tolerances unless otherwise specified			
	n		angles	INCH/MM	title	
	d		0°±2°			
	r		linear	scale 5:1	CONAN® CONNECTOR ASSEMBLY	
			XX±.01/XX.03			
			XX±.005/XX±0.13		dwg no	
			XXX±.000/XXX±0.05			
			GM SUN	sheet 4 of 7		size
			2013-01-14			
			GM SUN	10124017		A3
			2013-01-14			
			chr RICK BIAN	Product Customer Drawing		type
			2013-01-14			
			appd RICK BIAN	2013-01-14		drawing
			2013-01-14			
sheet	revision					
index	sheet					



RECOMMENDED
PAD LAYOUT
FOR PLUG



RECOMMENDED
STENCIL LAYOUT
FOR PLUG

mat'l. code		surface	tolerance	projection	product family
B		ISO 1302	ISO 406 ISO 1101	INCH/MM	CONAN
date		angles	linear	INCH/MM	title
		0°±2°	.XX±.01/.XX±.03 .XXX±.005/.XXX±.013 .XXX±.0020/.XXX±.005	scale 5:1	CONAN® CONNECTOR ASSEMBLY
dr		GM SUN	2013-01-14	dwg no	sheet 5 of 7 size
engr		GM SUN	2013-01-14	10124017	A3
chr		RICK BIAN	2013-01-14	type	Product Customer Drawing
appd		RICK BIAN	2013-01-14		
sheet index	revision	sheet			

Mouser Electronics

Authorized Distributor

Click to View Pricing, Inventory, Delivery & Lifecycle Information:

[FCI / Amphenol:](#)

[10124017-3021121LF](#) [10124017-3131169LF](#) [10124017-2021125LF](#) [10124017-3131111LF](#) [10124017-3021125LF](#)