



PRODUCT NUMBER  
20020202-XXXXXXLF

20020202-     A 0  LF

PITCH

C : 3.50 mm  
D : 3.81 mm  
G : 5.00 mm  
H : 5.08 mm

POLES

02: 2 POLES  
03: 3 POLES  
04: 4 POLES  
:  
:  
:  
16: 16 POLES

LF : DENOTED ROHS COMPATIBLE

2 : TAPE &amp; REEL PACKAGING

HOUSING CODE

CODE	COLOR	PROCESS
6	BLACK(RAL 9005)	PIP(NOTE 6)

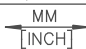
PROPERTY TABLE

FCI SERIES NAME	06-350	06-381	06-500	06-508
PITCH (mm)	3.50	3.81	5.00	5.08
VOLTAGE RATING (VAC)	300	300	300	300
CURRENT RATING (A)	10	10	12	12
WITHSTANDING VOLTAGE (kV)	1.6	1.6	1.6	1.6
OPERATING TEMP. (°C)	-40~+65	-40~+65	-40~+65	-40~+65
SOLDERING TEMP. (°C)	250±10 (5 sec.)	250±10 (5 sec.)	250±10 (5 sec.)	250±10 (5 sec.)
POLES AVAILABLE	02~16	02~16	02~12	02~12
SAFETY CERTIFICATE	PENDING		PENDING	

## NOTES:

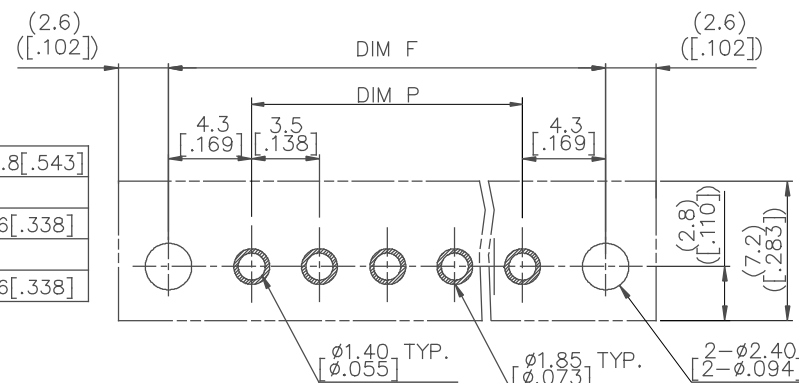
## 1. MATERIAL:

- 1-1. TERMINAL: COPPER, TIN PLATED.
- 1-2. HOUSING: THERMOPLASTIC RESIN, UL94V-0 RATED.
- 1-3. FLANGE NUT: STEEL, M2.5, ZINC PLATED.
- 1-4. COVER: THERMOPLASTIC RESIN, UL94V-0 RATED.
2. PRODUCT SPECIFICATION REFER TO FCI GS-12-625.
3. PRODUCT PACKING SPECIFICATION REFER TO FCI GS-14-1394.
4. FCI, SAFETY CERTIFICATE LOGO AND SERIES NAME TO BE SHOWN ON PRODUCT SURFACE.
5. THE PRODUCTS WHERE THE PART NUMBER END IN "LF" MEET THE EUROPEAN UNION DIRECTIVE AND OTHER COUNTRY REGULATIONS AS DESCRIBED IN GS-22-008.
6. THE HOUSING WILL WITHSTAND EXPOSURE TO 260°C PEAK TEMPERATURE FOR 5 SECONDS IN A CONVECTION, INFRA-RED OR VAPOR PHASE REFLOW OVEN.

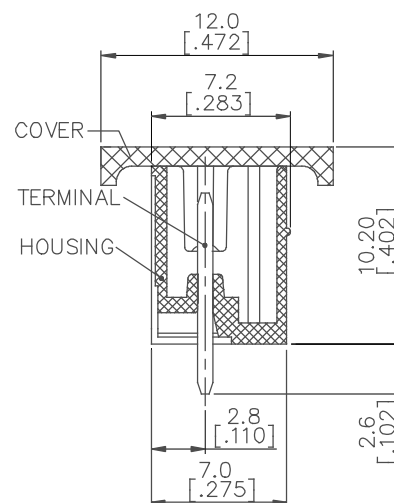
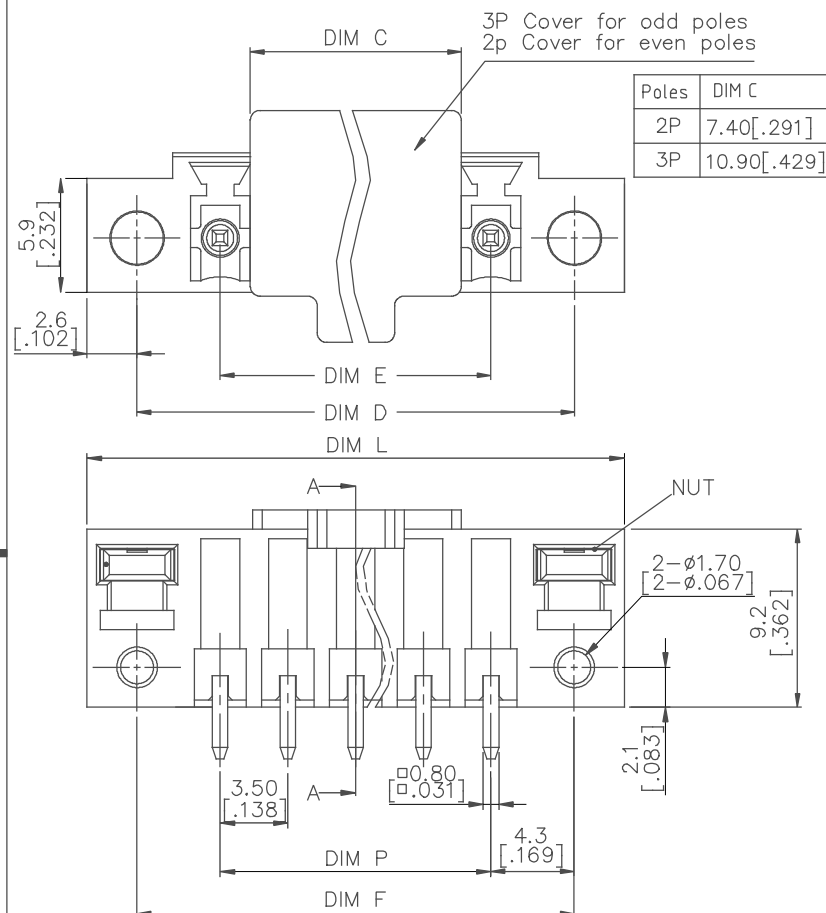
mat'l. code				surface ASME Y14.5 ✓	tolerance ASME Y14.5	projection 	product family TERMINAL BLOCK
ltr	ecn no	dr	date	tolerances unless otherwise specified			title
A		LS	071912	angles	X.±0.5	MM [INCH]	TERMINAL BLOCK
				pos	X.X±0.3		PLUGGABLE, SOCKET, SIGNAL, STRAIGHT
				X'±1'	X.XX±0.1	scale	W/FLANGE(PIP)
				dr	LEIF SHEN	041911	dwg no
				enr	LEIF SHEN	041911	sheet 1 of 5
				chr	LEIF SHEN	041911	size
				appd	JOSEPH HSIA	041911	20020202
sheet	revision	A	A	A	A	A	A4
index	sheet	1	2	3	4	5	
							type
							CUSTOMER Drawing

N= Number of poles

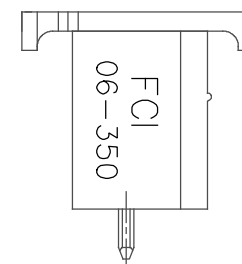
POLES	TOLERANCE
2p-6p	$\pm 0.15[.006]$
7p-12p	$\pm 0.20[.008]$
13p-16p	$\pm 0.30[.012]$



## RECOMMENDED PCB LAYOUT



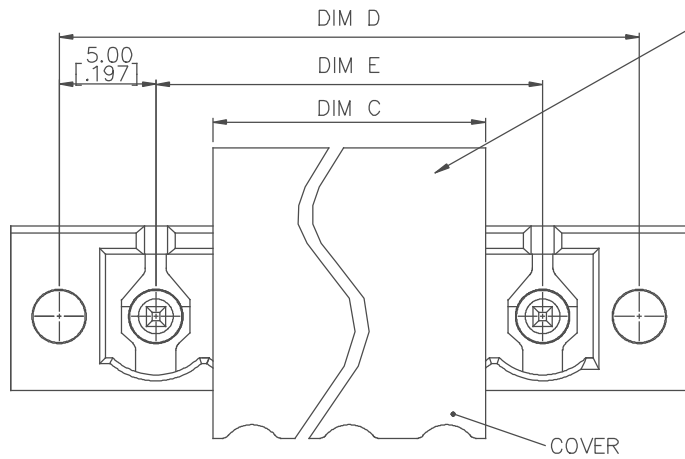
SECTION A-A



form: A4mmXLc

1

PRODUCT NUMBER	SERIES NAME	PITCH
20020202-GXXXXXL	06-500	5.00 mm



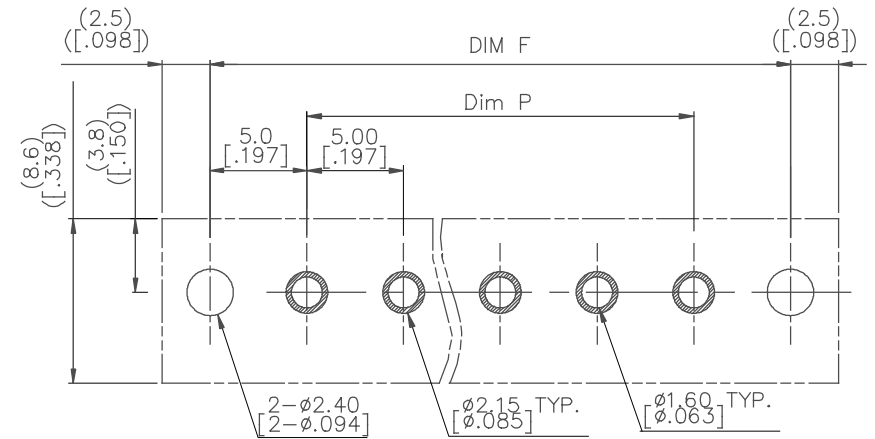
3P Cover for odd poles  
2p Cover for even poles

Poles	DIM C
2P	9.04[.356]
3P	14.08[.554]

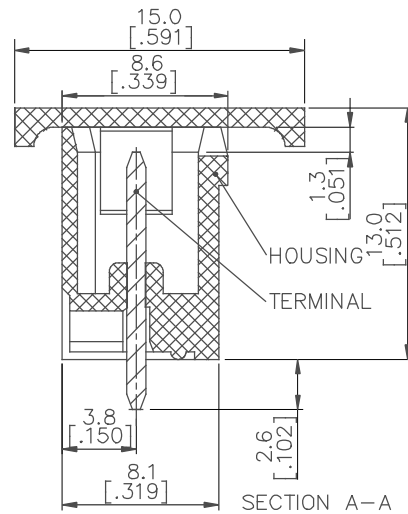
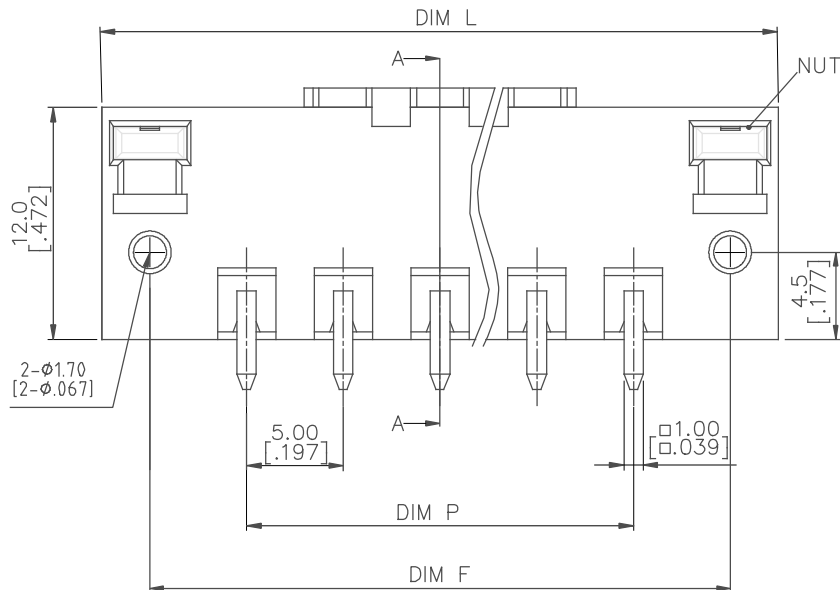
N= NUMBER OF POLES

DIM L	(N+2)*5.0[.197]
DIM P	(N-1)*5.0[.197]
DIM D	(N+1)*5.0[.197]
DIM E	(N-1)*5.0[.197]
DIM F	(N+1)*5.0[.197]

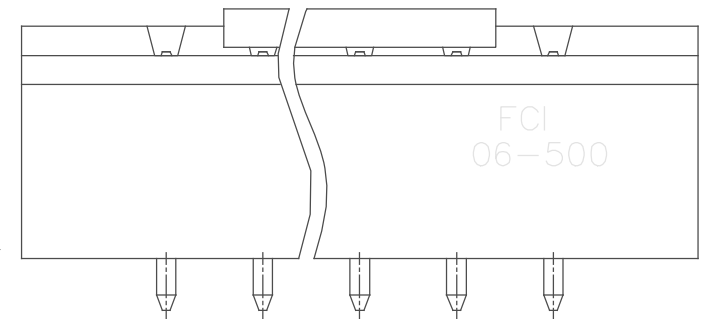
POLES	TOLERANCE
2-3p	±0.15[.006]
4-8p	±0.20[.008]
9-12p	±0.25[.010]



RECOMMENDED PCB LAYOUT



SECTION A-A



mat'l. code	surface ASME Y14.5	tolerance ASME Y14.5	projection MM INCH	product family TERMINAL BLOCK
ltr	ecn no	dr	date	title TERMINAL BLOCK PLUGGABLE, SOCKET, SIGNAL, STRAIGHT W/FLANGE(PIP)
A				dwg no 20020202
				sheet 4 of 5
				size A4
				type CUSTOMER Drawing
sheet index	revision sheet			

PRODUCT NUMBER	SERIES NAME	PITCH
20020202-HXXXXXXLF	06-508	5.08 mm

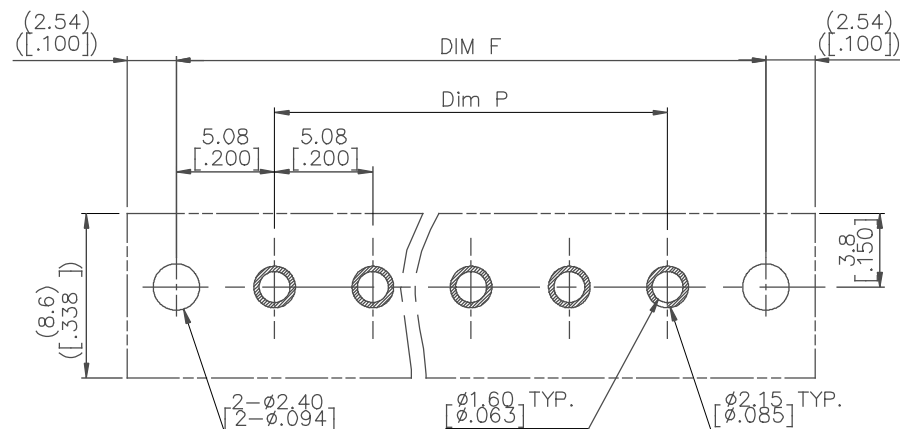
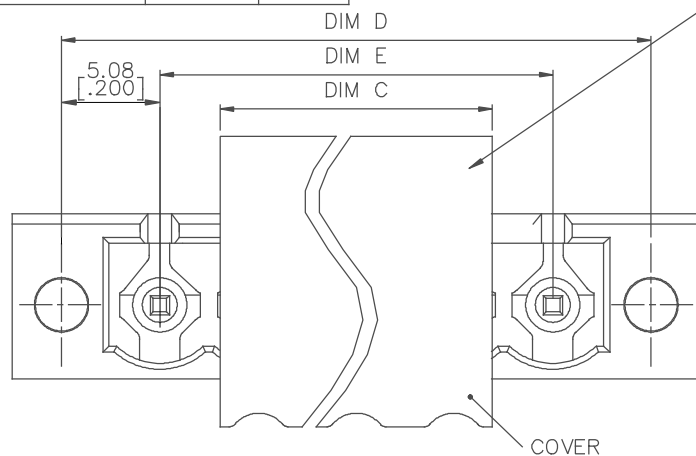
3P Cover for odd poles  
2P Cover for even poles

Poles	DIM C
2P	9.04[.356]
3P	14.08[.554]

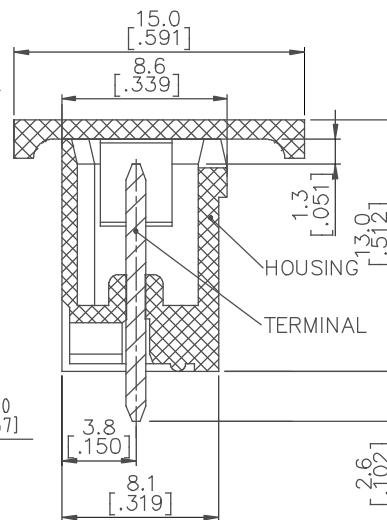
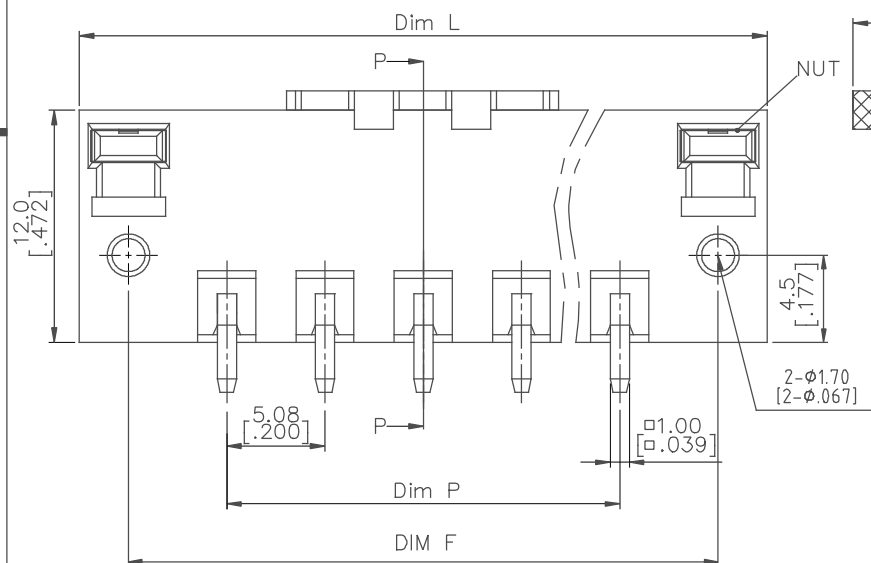
N= NUMBER OF POLES

DIM L	$(N+2)*5.08[.200]$
DIM P	$(N-1)*5.08[.200]$
DIM D	$(N+1)*5.08[.200]$
DIM E	$(N-1)*5.08[.200]$
DIM F	$(N+1)*5.08[.200]$

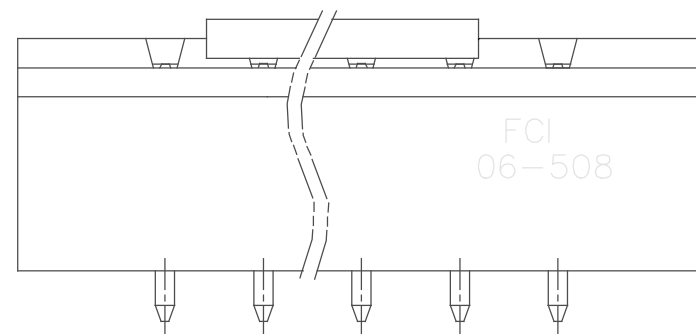
POLES	TOLERANCE
2-3p	$\pm 0.15[.006]$
4-8p	$\pm 0.20[.008]$
9-12p	$\pm 0.25[.010]$



## RECOMMENDED PCB LAYOUT



SECTION P-P

[illegible]

# Mouser Electronics

Authorized Distributor

Click to View Pricing, Inventory, Delivery & Lifecycle Information:

[Amphenol:](#)

[20020202-C076A02LF](#) [20020202-H026A02LF](#)