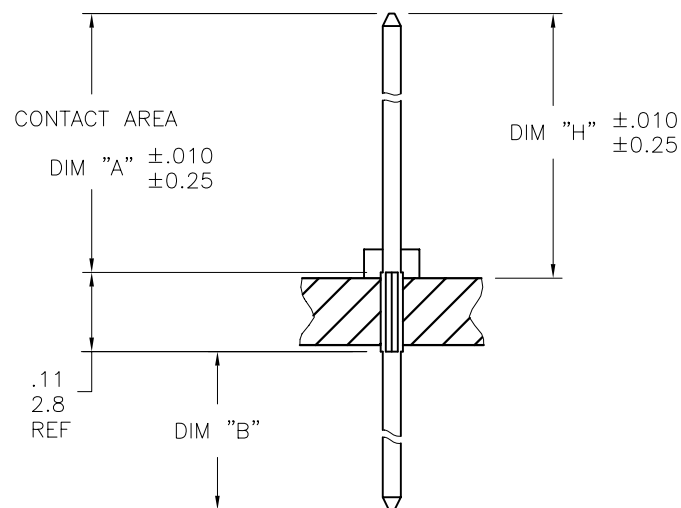
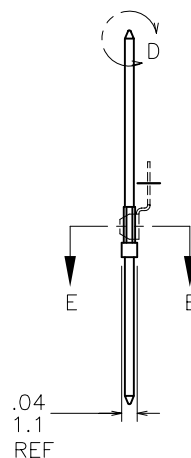
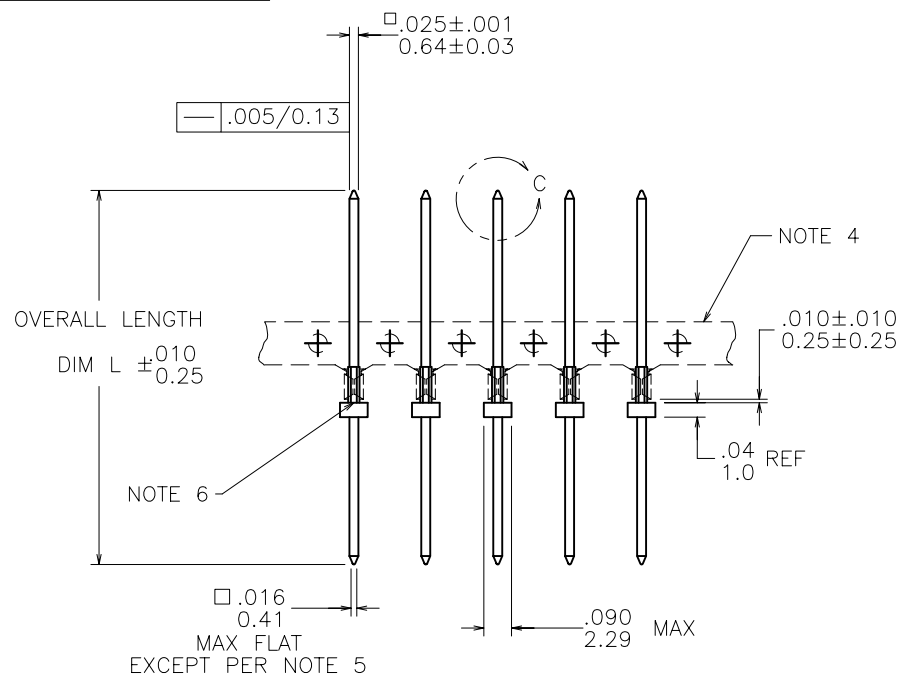


PRODUCT NUMBER

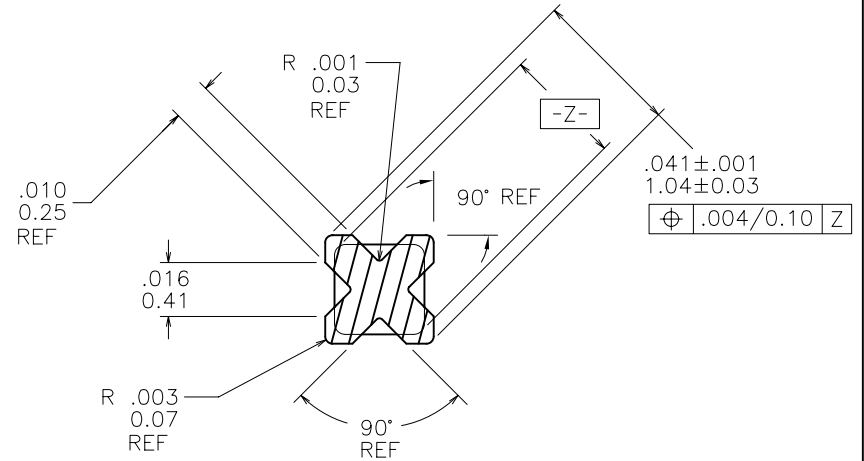
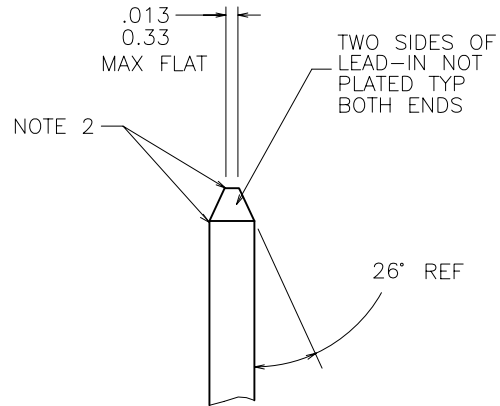
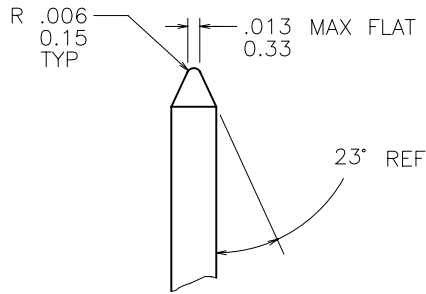
SEE TABLE

SECTION THRU PC BOARD
SCALE 4:1

mat'l. code SEE NOTE 1				surface ASME Y14.5		tolerance ASME Y14.5		projection		product family	
ltr	ecr no	dr	date	angles	radius	tolerances unless otherwise specified	tolerances unless otherwise specified	INCH/MM	scale	title	sheet 1 of 3
A	V51002	MDF	1995-08-17			XX*01/X*3				BERGPIN® .200"[5.08]cc	
B	V51067	MDF	1995-10-03			XXX*005/XX*13				.041"[1.04] DIA., .110"[2.79] LONG STAR	
C	V61411	EPK	1996-11-14	0° ± 2°		XXXX*0020/XXX*051			2:1	WITH SOLDER WASHER	
D	V92858	DLW	1999-08-30	dr	M. FETROW	1995-08-17				dwg no	size
E	V06-0682	JRV	2006-07-18	enrg	L. FYE	1995-08-17				71258	A4
F	V08-0354	HTB	2008-08-20	chr	L. FYE	1995-08-17				type	CUSTOMER Drawing
				appd	L. FYE	1995-08-17					
sheet	revision	F	F	F							
index	sheet	1	2	3							

PRODUCT NUMBER

SEE TABLE



mat'l. code SEE NOTE 1				surface ASME Y14.5	tolerance ASME Y14.5	projection	product family PIN PRODUCTS
ltr	ecr no	dr	date	tolerances unless otherwise specified			title
F				angles	$XX \pm .01 / X \pm .3$ $XXX \pm .005 / XXX \pm .13$ $XXXX \pm .0020 / XXX \pm .051$		BERGPIN® .200"[5.08]cc .041"[1.04] DIA., .110"[2.79] LONG STAR WITH SOLDER WASHER
				dr	M. FETROW	1995-08-17	dwg no
				enr	L. FYE	1995-08-17	sheet 2 of 3
				chr	L. FYE	1995-08-17	size
				appd	L. FYE	1995-08-17	A4
sheet index	revision sheet						type
							CUSTOMER Drawing



PRODUCT NUMBER	CONTACT AREA DIM A	TERMINATION AREA DIM B	OVERALL LENGTH DIM L	DIM H FOR .093/2.36 THK BOARD	DIM H FOR .125/3.18 THK BOARD
71258-010	.140/3.56	.100/2.54	.350/8.89	.318/8.08	.302/7.67
71258-020	.240/6.10	.040/1.02	.390/9.91	.148/3.76	.132/3.35
71258-030	.270/6.86	.040/1.02	.420/10.67	.248/6.30	.232/5.89
71258-040	.290/7.37	.040/1.02	.440/11.18	.278/7.06	.262/6.66
71258-050	.310/7.87	.040/1.02	.460/11.68	.298/7.57	.282/7.16
71258-060	.310/7.87	.090/2.29	.510/12.95	.318/8.08	.302/7.67
71258-070	.310/7.87	.120/3.05	.540/13.72	.318/8.08	.302/7.67
71258-080	.310/7.87	.170/4.32	.590/14.99	.318/8.08	.302/7.67
71258-090	.310/7.87	.270/6.86	.690/17.53	.318/8.08	.302/7.67
71258-100	.330/8.38	.040/1.02	.480/12.19	.338/8.59	.322/8.18
71258-110	.360/9.14	.040/1.02	.510/12.95	.368/9.35	.352/8.94
71258-120	.360/9.14	.310/7.87	.780/19.81	.368/9.35	.352/8.94
71258-130	.390/9.91	.040/1.02	.540/13.72	.398/10.11	.382/9.70
71258-140	.430/10.92	.040/1.02	.580/14.73	.438/11.25	.322/8.18
71258-150	.450/11.43	.040/1.02	.600/15.24	.458/11.63	.442/11.23
71258-160	.470/11.94	.460/11.68	1.040/26.42	.478/12.14	.462/11.74
71258-170	.485/12.32	.105/2.67	.700/17.78	.493/12.52	.477/12.12
71258-180	.567/14.40	.456/11.58	.933/23.70	.575/14.61	.559/14.20
71258-190	.585/14.86	.105/2.67	.800/20.32	.593/15.06	.577/14.60
71258-200	.590/14.99	.040/1.02	.740/18.80	.598/15.19	.582/14.78
71258-210	.705/17.91	.040/1.02	.855/21.72	.713/18.11	.697/17.70

NOTES:

- ① PIN MAT'L:
3/4 HARD PHOS BRONZE
PLATING:
30μ" [0.76μ] MIN Au OVER 50μ" [1.27μ] MIN Ni.
- ② BURNISH MARKS ON PIN PERMITTED.
BURR: .003 [0.08] MAX, BULGE: .0005 [0.013] MAX TYP.
3. SEE PRODUCT SPECIFICATION BUS-12-064 FOR
P.C. BOARD HOLE DIAMETER AND P.C. BOARD HOLE
PLATING INFORMATION.
- ④ FOR MANUFACTURING PURPOSES ONLY.
- ⑤ DOUBLE ENDED PINS AS MARKED MUST MEET SPECS
IN VIEWS C AND D ON BOTH ENDS. OTHERS TO
HAVE .016 [0.41] MAX DIM ON BOTTOM END OF PIN.
- ⑥ SOLDER MAY BULGE IN THIS AREA BUT WILL
NOT TOUCH FERRULE.
SOLDER VOLUME: 82.5 MIN PER PIN
(.068 X .074 X .021) BEFORE FORMING.
7. "A" DIM. IS TO FEATURE ON PIN.
"H" DIM. IS ABOVE BOARD.
"B" DIM. IS TO FEATURE ON PIN.

mat'l. code SEE NOTE 1	surface ASME Y14.5	tolerance ASME Y14.5	projection 	product family PIN PRODUCTS
ltr ecn no dr date	tolerances unless otherwise specified	angles XX*01/X*3 XXX*005/XX*13 XXXX*0020/XXX*051	INCH/MM scale 1:1	title BERGPIN® .200"[5.08]cc .041"[1.04] DIA., .110"[2.79] LONG STAR WITH SOLDER WASHER
dr M. FETROW 1995-08-17	enr L. FYE 1995-08-17	chr L. FYE 1995-08-17	appd L. FYE 1995-08-17	dwg no sheet 3 of 3 size 71258 A4
sheet index	revision sheet			type CUSTOMER Drawing

Mouser Electronics

Authorized Distributor

Click to View Pricing, Inventory, Delivery & Lifecycle Information:

[FCI / Amphenol:](#)

[71258-030](#) [71258-050](#) [71258-090](#) [71258-100](#) [71258-110](#) [71258-040](#)