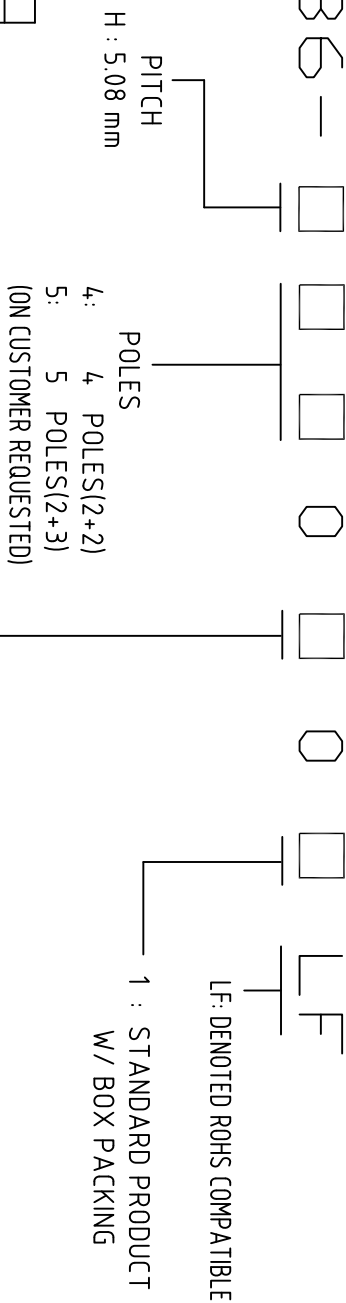


PRODUCT NUMBER
20020336-XXXXXXXXLF


NON W W N


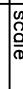


PROPERTY TABLE		
FCI SERIES NAME		21-508
PITCH (mm)		5.08
VOLTAGE RATING (VAC)		300
CURRENT RATING (A)		16
APPLICABLE WIRE RANGE (AWG)	SOLID	12~28
	STRAINED	18~28
OPENING CONTACT HOUSING(mm)		2.1x2.7
WIRE STRIP LENGTH(mm)		6~7
TORQUE +/-10% (lb-in)		3.5
SCREW		M3x0.5
WITHSTANDING VOLTAGE (kV)		16
OPERATING TEMP. (°C)		-40~+115
SOLDERING TEMP. (°C)		250±10 (5 sec.)
POLES AVAILABLE		4/5
SAFETY CERTIFICATE		PENDING

NOTES:

1. PRODUCT SPECIFICATION REFER TO FCI GS-12-625.
2. PRODUCT PACKING SPECIFICATION REFER TO FCI GS-14-1394.
3. FCI, SAFETY CERTIFICATE LOGO AND SERIES NAME TO BE SHOWN ON PRODUCT SURFACE.
4. THE PRODUCTS WHERE THE PART NUMBER END IN "LF" MEET THE EUROPEAN UNION DIRECTIVE AND OTHER COUNTRY REGULATIONS AS DESCRIBED IN GS-22-008.

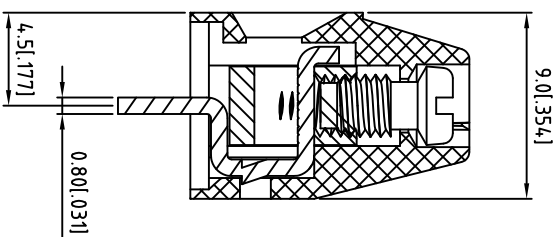
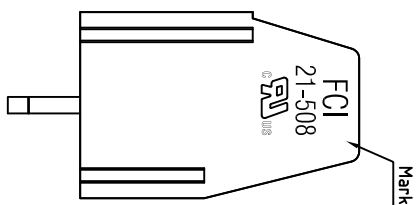
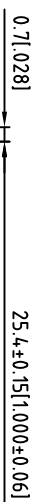
SCREW CODE			
CODE	SCREW TYPE		AVAILABILITY
B	-		STANDARD

mat'l. code					surface		tolerance		projection		product family									
					ASME Y14.5 ✓		ASME Y14.5				TERMINAL BLOCK									
itr ecn no dr date					tolerances unless otherwise specified					title										
A					LS		013112		angles		TERMINAL BLOCK									
									0		FIXED HORIZONTAL WIRE INLET									
									X, XX±0.5		dwg no									
									X, XX±0.3		sheet 1 of 3 size									
									X ± .1'		A ₄									
									X, XX±0.1		20020336									
									scale		CUSTOMER Drawing									
																				
					dr		LEF SHEN		011112											
					engr		LEF SHEN		011112											
					chr		LEF SHEN		011112											
					dppd		GARY HSIEH		011112											
sheet revision					A		A		A											
index sheet					1		2		3											

3

A

W

1
—
2

SECTION P-P

4

Mouser Electronics

Authorized Distributor

Click to View Pricing, Inventory, Delivery & Lifecycle Information:

[Amphenol:](#)

[20020336-H040B01LF](#)