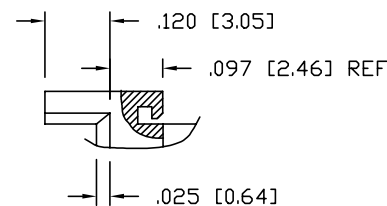
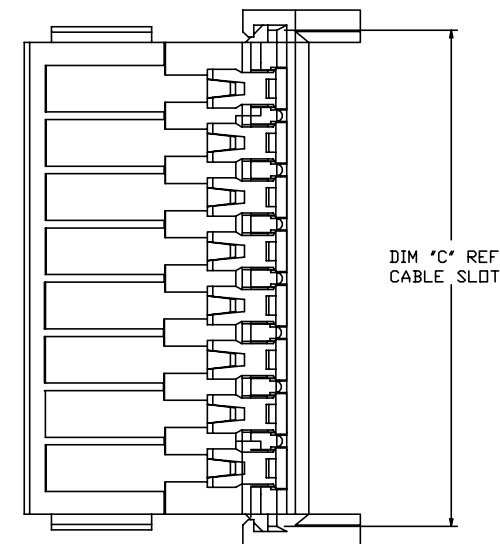
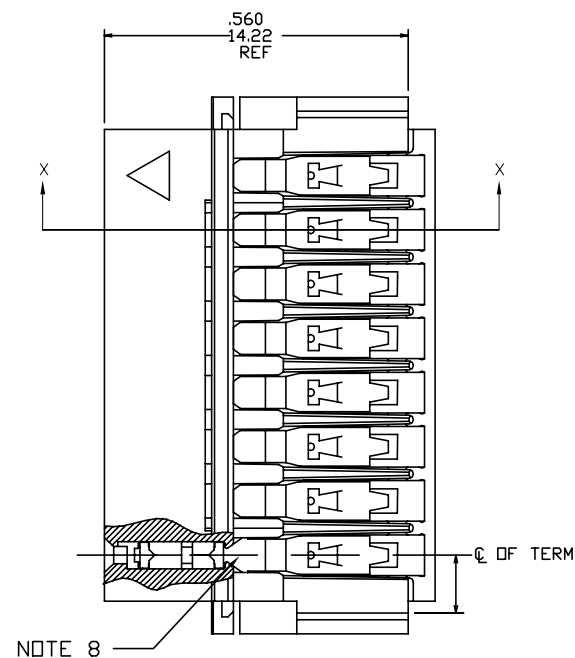
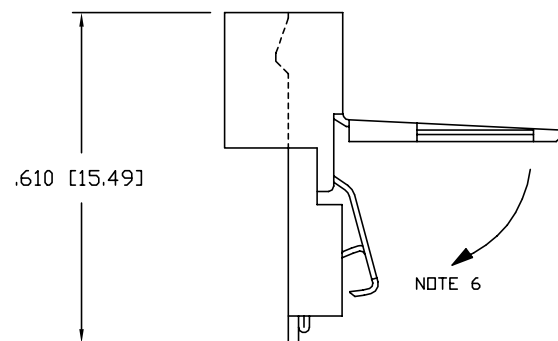
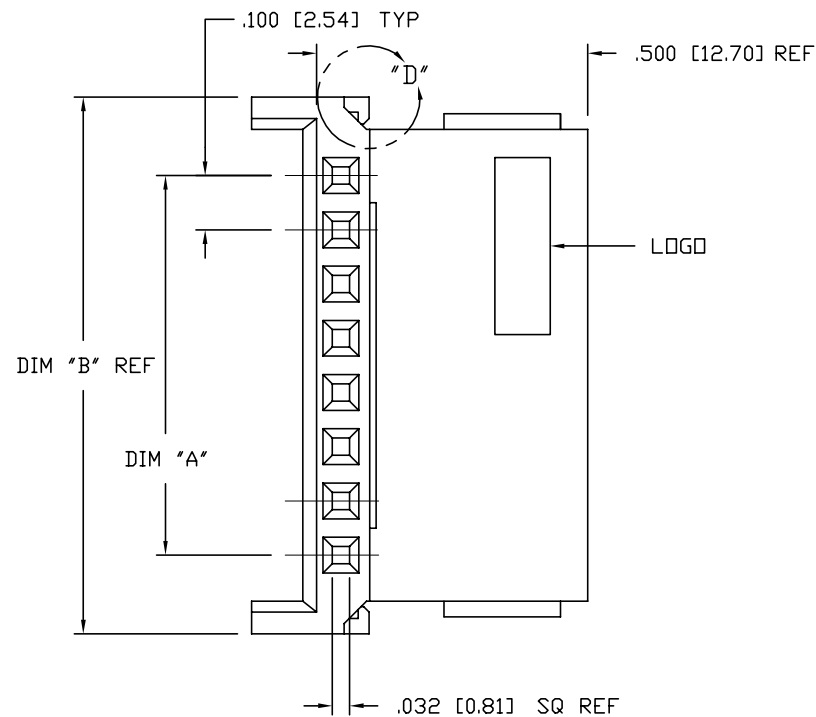


PRODUCT NUMBER  
SEE TABLE



DETAIL "D"

mat'l. code		surface	tolerance	projection	product family	
		ISO 1302 ✓	ISO 406 ISO 1101		CLINCHER	
ltr	ecn	no	date	tolerances unless otherwise specified	title	
M	ELX-N-010494	ZK	06/03/12	angles	CLINCHER™ RECEPTACLE ASSEMBLY—LATCHING	
G	V50244	HTB	2/14/95	0°±2°	dwg no	
H	V51638	HTB	12/29/95	dr	sheet 1 of 6	
J	M05-0087	MHT	6/17/05	engr	size	
K	M06-0233	AGS	06/12/06	chr	A3	
L	M07-0170	MHT	3/30/07	appd	type Product Customer Drawing	
sheet	revision	M	M	M	M	M
index	sheet	1	2	3	4	5

1

2

3

4

5

6

## PLATING AVAILABLE

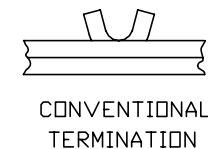
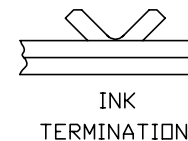
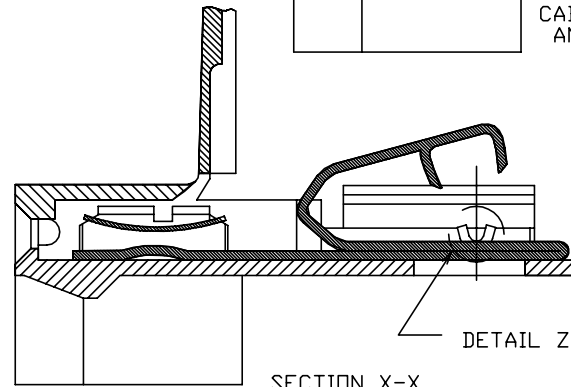
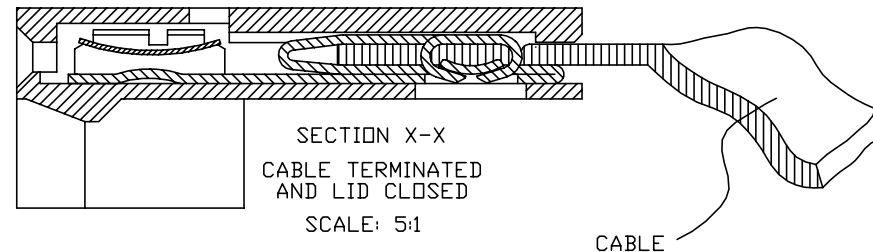
PLATING CODE	TERMINAL	SPRING
1	100u"/2.54u MIN. THICK PURE TIN	10u"/.25u MIN. THICK PURE TIN
2	30u"/.76u MIN. GOLD OR GXT STRIPE IN BOX AREA NOTE 12	3u"/.08u MIN. GOLD OVER 50u"/1.27u MIN. NICKEL

PRODUCT NUMBER

67516-XXXLF

LEAD FREE OPTION  
NOTE 9,10NO OF POSITIONS  
AND PLATING

BASE PART NUMBER

DETAIL Z  
SCALE 5:1

## NOTES:

- HOUSING MATERIAL: THERMOPLASTIC, FLAME RETARDANT PER UL 94V-0. COLOR: BLUE.
- TERMINAL MATERIAL: 1/2 HARD Cu NI ALLOY, UNS-C72500.
- TERMINAL PLATING: SEE TABLE.
- SEE TA-372 FOR CRIMP HEIGHT.
- FOR CABLE & CIRCUITRY INFORMATION SEE TA-264 AND TA-371.
- LATCH SNAPS CLOSED AFTER TERMINATION MAINTAINING A MAX OVER ALL HEIGHT OF .100/2.54.
- NO CENTER HINGE 2 THRU 8 POSITIONS. SINGLE CENTER HINGE 9 THRU 15 POSITIONS. TWO CENTER HINGES FOR 16 POSITION PARTS.
- KNURL MARK INDICATES FOR USE WITH INK TERMINATION. CONSULT WITH BERG ELECTRONICS TECHNICAL REPRESENTATIVE FOR SPECIFIC APPLICATIONS.
- ADD "LF" SUFFIX AT THE END OF PART NUMBER FOR LEAD FREE OPTION.
- THIS PRODUCT MEETS EUROPEAN UNION DIRECTIVES AND OTHER COUNTRY REGULATION AS DESCRIBED IN GS-22-008.
- THE PRODUCT IS NOT INTENDED TO BE EXPOSED TO A MANUFACTURING SOLDER PROCESS
- PLATING OPTION MAY BE EITHER GOLD OR GXT PLATED AT MANUFACTURER'S OPTION.

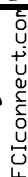
mat'l. code	surface ISO 1302 ✓	tolerance ISO 406 ISO 1101	projection INCH/MM	product family CLINCHER
ltr ecn nodr date	tolerances unless otherwise specified	angles linea	scale 3:1	title CLINCHER™ RECEPTACLE ASSEMBLY-LATCHING
M		0°±2°		dwg no 67516
	dr M. FETROW 9/15/94			sheet 2 of 6 size A3
	enr T. HANNA 9/15/94			
	chr T. BREWBAKER 9/15/94			
	app T. HANNA 9/15/94			type Product Customer Drawing
sheet index	revision sheet			

PDS: Rev :M

STATUS: Released

Printed: Mar 07, 2012



AD

1

2

3

4

5

6

PRODUCT NUMBER	NO. OF	DIM. A	DIM. A	DIM. B	DIM. B	DIM. C	DIM. C	PLATING	TERMINATION
NOTE 9	POS.	ENGLISH	METRIC	ENGLISH	METRIC	ENGLISH	METRIC	CODE	NOTE 8
67516-501		U N A	S S I G	N E D					
67516-502	2	0.100	2.54	0.390	9.91	0.315	8.00	1	INK
67516-503	3	0.200	5.08	0.490	12.45	0.415	10.54	1	INK
67516-504	4	0.300	7.62	0.590	14.99	0.515	13.08	1	INK
67516-505	5	0.400	10.16	0.690	17.53	0.615	15.62	1	INK
67516-506	6	0.500	12.70	0.790	20.07	0.715	18.16	1	INK
67516-507	7	0.600	15.24	0.890	22.61	0.815	20.70	1	INK
67516-508	8	0.700	17.78	0.990	25.15	0.915	23.24	1	INK
67516-509	9	0.800	20.32	1.090	27.69	1.015	25.78	1	INK
67516-510	10	0.900	22.86	1.190	30.23	1.115	28.32	1	INK
67516-511	11	1.000	25.40	1.290	32.77	1.215	30.86	1	INK
67516-512	12	1.100	27.94	1.390	35.31	1.315	33.40	1	INK
67516-513	13	1.200	30.48	1.490	37.85	1.415	35.94	1	INK
67516-514	14	1.300	33.02	1.590	40.39	1.515	38.48	1	INK
67516-515	15	1.400	35.56	1.690	42.93	1.615	41.02	1	INK
67516-516	16	1.500	38.10	1.790	45.47	1.715	43.56	1	INK

FCIconnect.com

Copyright FCI

mat'l. code		surface ISO 1302 ✓		tolerance ISO 406 ISO 1101		projection INCH/MM scale 1:3		product family CLINCHER	
ltr ecn nodr date		tolerances unless otherwise specified		angles linea		INCH/MM		title CLINCHER™ RECEPTACLE ASSEMBLY-LATCHING	
M				0°±2°		JXX±.01/JXX±0.3 JXXX±.005/JXX±0.13 JXXXX±.0020/JXXX±0.051		dwg no sheet 5 of 6 size	
				dr M. FETROW		9/15/94		67516 A3	
				engr T. HANNA		9/15/94			
				chr T.BREWBAKER		9/15/94			
				appd T.HANNA		9/15/94		type Product Customer Drawing	
sheet index		revision sheet							

Form: A3

1

2

3

4

5

6

PDS: Rev :M

STATUS: Released

Printed: Mar 07, 2012



# Mouser Electronics

Authorized Distributor

Click to View Pricing, Inventory, Delivery & Lifecycle Information:

[FCI / Amphenol:](#)

[67516-002LF](#) [67516-003LF](#) [67516-211LF](#) [67516-505LF](#) [67516-511LF](#) [67516-516LF](#) [67516-708LF](#) [67516-009LF](#)  
[67516-502LF](#) [67516-503LF](#) [67516-512LF](#) [67516-707LF](#) [67516-514LF](#) [67516-710LF](#)