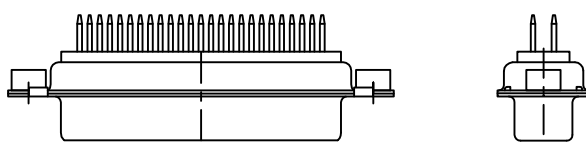


	1	2	3	4	5	6	7	8																																																																																																																									
A	<p><u>REFERENCE SPECIFICATIONS</u></p> <p>-NFC 93425 (In compliance with HE 508)</p> <p><u>PHYSICAL CHARACTERISTICS</u></p> <p>-INSULATOR MATERIAL: THERMOSET UL94V0</p> <p>-CONTACT MATERIAL: BRASS GOLD OVER NICKEL</p> <p>-ACCESSORIES: BRASS Cadmium plated, yellow passivation</p> <p>-SHELLS: STEEL Cadmium plated, yellow passivation</p>			<p>Series ← DBML 25S300N</p> <p>Shell size: E A B C D ← see sheet 2</p> <p>Front accessory definition see sheet 2</p> <p>Blank :without accessory</p> <p>F :floating mounting</p> <p>L :threaded insert M3</p> <p>□ :threaded insert UNC 4-40</p> <p>V :female screw UNC 4-40</p> <p>S :spacer</p> <p>Contact number (see sheet 2) ← 9,15,25,37,50</p> <p>Contacts ←</p> <p>S :Socket</p> <p>Termination type ←</p> <p>3 :Straight version</p> <p>Plating ←</p> <p>00 : 500 matings/unmatings</p> <p>43 : 500 matings/unmatings for harsh environment</p>					A																																																																																																																								
B	<p><u>ELECTRICAL CHARACTERISTICS</u></p> <p>-NOMINAL CURRENT: 7.5A</p> <p>-CONTACT RESISTANCE: <= 7.3 m ohms</p> <p>-CONTACT/CONTACT : >=1000 V</p> <p>-CONTACT/GROUND : >=1200 V</p> <p>-INSULATION RESISTANCE: >=5000 MOhms</p>								Obligatory for HE508	B																																																																																																																							
C	<p><u>ENVIRONMENTAL CHARACTERISTICS</u></p> <p>- CLIMATIC CATEGORY: 55/155/56</p> <p>TEMPERATURE RANGE -55°C TO +155°C</p> <p>DAMP HEAT STEADY STATE 56 DAYS</p> <p>SALT SPRAY 48 HOURS</p>									C																																																																																																																							
D	<p><u>MECHANICAL CHARACTERISTICS</u></p> <p>- RETENTION AGAINST TORQUE: - Threaded insert: 0.7 N.m minimum</p> <p>- Female screw : 0.5 N.m minimum</p>									D																																																																																																																							
E									E																																																																																																																								
F				<p>25 WAY for Example</p> <table><tr><td>rev</td><td>ecn no</td><td>dr</td><td>date</td><td>Dr</td><td>M PESSON</td><td>2006/11/14</td><td>surface</td><td>-</td><td>tolerance std</td><td>projection</td><td>mm</td></tr><tr><td>A</td><td>LS06-0174</td><td>MPE</td><td>2006/11/14</td><td>Eng</td><td>P LEGARE</td><td>2006/11/14</td><td>ISO 1302</td><td>✓</td><td>ISO 406</td><td>ISO 1101</td><td></td></tr><tr><td>B</td><td>LS07-0273</td><td>MPE</td><td>2007/10/30</td><td>Chr</td><td>P LEGARE</td><td>2006/11/14</td><td colspan="2">TOLERANCES UNLESS OTHERWISE SPECIFIED</td><td>size</td><td>A2</td><td>Scale 2:1</td></tr><tr><td>C</td><td>F12-0018</td><td>GPE</td><td>2012/02/24</td><td>Appr</td><td>P LEGARE</td><td>2006/11/14</td><td>ANGULAR</td><td>LINEAR</td><td>0.X</td><td>±0.3</td><td></td></tr><tr><td>-</td><td>-</td><td>-</td><td>-</td><td></td><td></td><td></td><td></td><td></td><td>0.XX</td><td>±0.1</td><td></td></tr><tr><td>-</td><td>-</td><td>-</td><td>-</td><td></td><td></td><td></td><td></td><td></td><td>0.XXX</td><td>±0.05</td><td></td></tr><tr><td>-</td><td>-</td><td>-</td><td>-</td><td></td><td></td><td></td><td colspan="2">Product family</td><td colspan="3">- Spec ref</td></tr><tr><td>-</td><td>-</td><td>-</td><td>-</td><td></td><td></td><td></td><td colspan="2">SUB FEMALE DM HE508 series</td><td>ECN</td><td>C01-8637-1746</td><td>Rev. C</td></tr><tr><td>-</td><td>-</td><td>-</td><td>-</td><td></td><td></td><td></td><td colspan="2">with straight solder contact</td><td colspan="3">CUSTOMER</td></tr><tr><td>-</td><td>-</td><td>-</td><td>-</td><td></td><td></td><td></td><td>catalog no</td><td></td><td colspan="3">sheet 1 of 4</td></tr></table>					rev	ecn no	dr	date	Dr	M PESSON	2006/11/14	surface	-	tolerance std	projection	mm	A	LS06-0174	MPE	2006/11/14	Eng	P LEGARE	2006/11/14	ISO 1302	✓	ISO 406	ISO 1101		B	LS07-0273	MPE	2007/10/30	Chr	P LEGARE	2006/11/14	TOLERANCES UNLESS OTHERWISE SPECIFIED		size	A2	Scale 2:1	C	F12-0018	GPE	2012/02/24	Appr	P LEGARE	2006/11/14	ANGULAR	LINEAR	0.X	±0.3		-	-	-	-						0.XX	±0.1		-	-	-	-						0.XXX	±0.05		-	-	-	-				Product family		- Spec ref			-	-	-	-				SUB FEMALE DM HE508 series		ECN	C01-8637-1746	Rev. C	-	-	-	-				with straight solder contact		CUSTOMER			-	-	-	-				catalog no		sheet 1 of 4			F
rev	ecn no	dr	date	Dr	M PESSON	2006/11/14	surface	-	tolerance std	projection	mm																																																																																																																						
A	LS06-0174	MPE	2006/11/14	Eng	P LEGARE	2006/11/14	ISO 1302	✓	ISO 406	ISO 1101																																																																																																																							
B	LS07-0273	MPE	2007/10/30	Chr	P LEGARE	2006/11/14	TOLERANCES UNLESS OTHERWISE SPECIFIED		size	A2	Scale 2:1																																																																																																																						
C	F12-0018	GPE	2012/02/24	Appr	P LEGARE	2006/11/14	ANGULAR	LINEAR	0.X	±0.3																																																																																																																							
-	-	-	-						0.XX	±0.1																																																																																																																							
-	-	-	-						0.XXX	±0.05																																																																																																																							
-	-	-	-				Product family		- Spec ref																																																																																																																								
-	-	-	-				SUB FEMALE DM HE508 series		ECN	C01-8637-1746	Rev. C																																																																																																																						
-	-	-	-				with straight solder contact		CUSTOMER																																																																																																																								
-	-	-	-				catalog no		sheet 1 of 4																																																																																																																								
	1	2	3	4	5	6	7	8																																																																																																																									

FCI

Copyright FCI

PDM: Rev:C STATUS: Released Printed: Mar 14, 2012

1 2 3 4 5 6 7 8

A

B

C

D

E

F

A

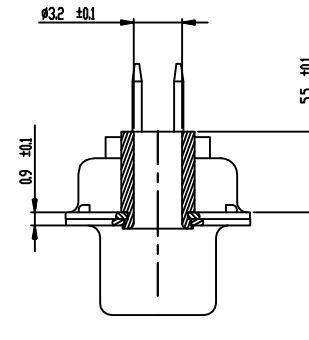
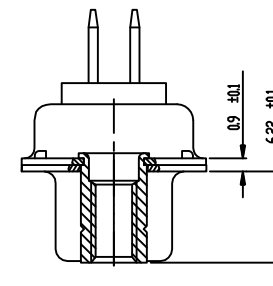
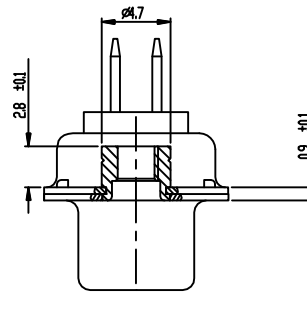
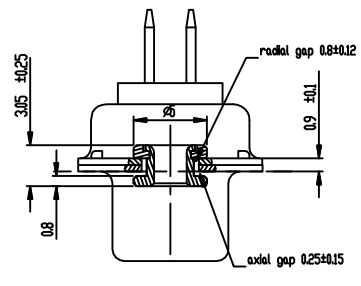
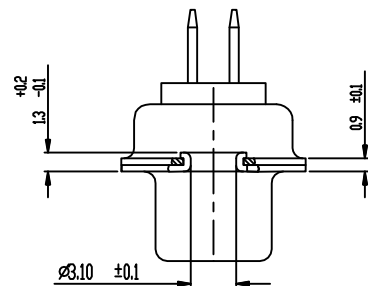
B

C

D

E

F



FRONT ACCESSORY	Blank without	F floating mounting	L insert M3 □ insert UNC 4.40	V female screw UNC 4.40	S spacer
-----------------	---------------	---------------------	----------------------------------	-------------------------	----------

PART NUMBER	FRONT ACCESSORY
D*MxxS300N	without
D*MFxxS300N	floating mounting
D*MLxxS300N	insert M3
D*MDxxS300N	insert UNC 4.40
D*MVxxS300N	female screw UNC 4.40
D*MSxxS300N	spacer

PART NUMBER	FRONT ACCESSORY
D*MxxS343N	without
D*MFxxS343N	floating mounting
D*MLxxS343N	insert M3
D*MDxxS343N	insert UNC 4.40
D*MVxxS343N	female screw UNC 4.40
D*MSxxS343N	spacer

shell size Contact number

*	XX
E	09
A	15
B	25
C	37
D	50

CROSS REFERENCES HE508 and FCI

HE508 P/N	FCI P/N	FRONT ACCESSORY
HE508NxxYS4	D*MxxS300N	without
HE508FxxYS4	D*MFxxS300N	floating mounting

SCALE:4

www.fciconnect.com			surface ISO 1302	tolerance std ISO 406 ISO 1101	projection A2	mm
			TOLERANCES UNLESS OTHERWISE SPECIFIED		size	Scale
Dr	M PESSON	2006/11/14	ANGULAR 1° 42°	0.X	±0.3	21
Eng	P LEGARE	2006/11/14		0.XX	±0.1	
Chr	P LEGARE	2006/11/14		0.XXX	±0.05	
Appr	P LEGARE	2006/11/14	Product family		ECN	F12-0018
					- Spec ref	
FCI			SUB FEMALE DM HE508 series with straight solder contact		Rev. C	
			catalog no	CUSTOMER	sheet 2 of 4	

PDM: Rev: C

STATUS: Released

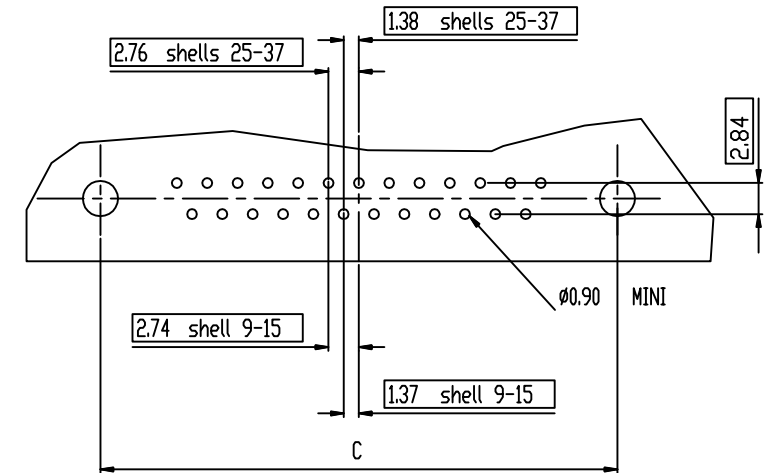
Printed: Mar 14, 2012

DIMENSIONS FOR SHELL E.A.B.C

Dimensions are in millimeters

Shell size	Number of contacts	A $\begin{smallmatrix} +0.76 \\ -0 \end{smallmatrix}$	B $\begin{smallmatrix} +0.25 \\ -0 \end{smallmatrix}$	C ± 0.12	F $\begin{smallmatrix} +0.57 \\ -0 \end{smallmatrix}$	G $\begin{smallmatrix} +0.25 \\ -0 \end{smallmatrix}$	H $\begin{smallmatrix} +0.51 \\ -0 \end{smallmatrix}$
E	09	30.43	16.21	24.99	10.64	6.05	19.02
A	15	38.76	24.54	33.32	10.64	6.05	27.25
B	25	52.65	38.25	47.04	10.64	6.05	41.02
C	37	68.94	54.71	63.50	10.64	6.05	57.45

LAYOUT AND CONNECTOR DIMENSIONS



www.fclconnect.com			surface \checkmark	tolerance std	projection	mm
Dr	M PESSON	2006/11/14	ISO 1302	ISO 406 ISO 1101		Scale
Eng	P LEGARE	2006/11/14	TOLERANCES UNLESS OTHERWISE SPECIFIED		size	21
Chr	P LEGARE	2006/11/14	ANGULAR	LINEAR	± 0.3	F12-0018
Appr	P LEGARE	2006/11/14	0.X	0.XX	± 0.1	
			0.XXX		± 0.05	ECN
			Product family		- Spec ref	
			SUB FEMALE DM HE508 series		C01-8637-1746	
			with straight solder contact		Rev.	
			catalog no		C	
					CUSTOMER	
					sheet 3 of 4	

PDM: Rev: C

STATUS: Released

Printed: Mar 14, 2012

1 2 3 4 5 6 7 8

A

B

C

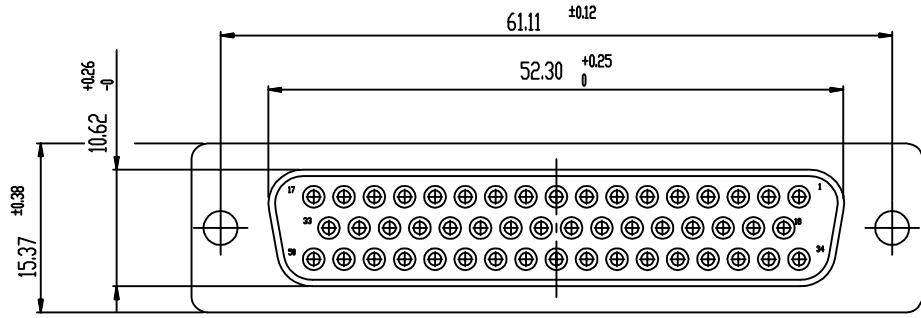
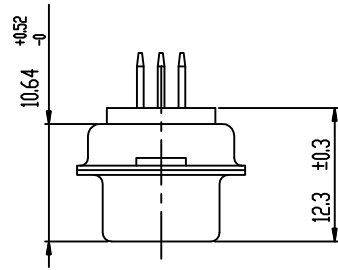
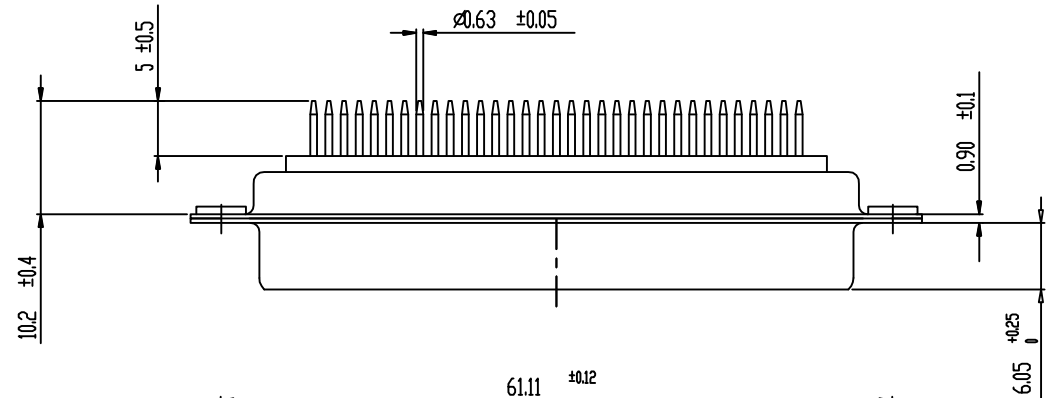
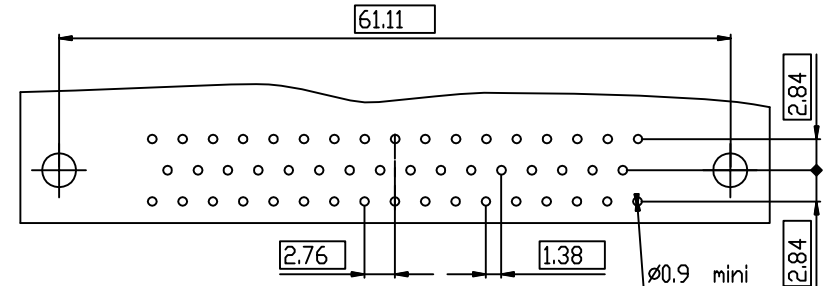
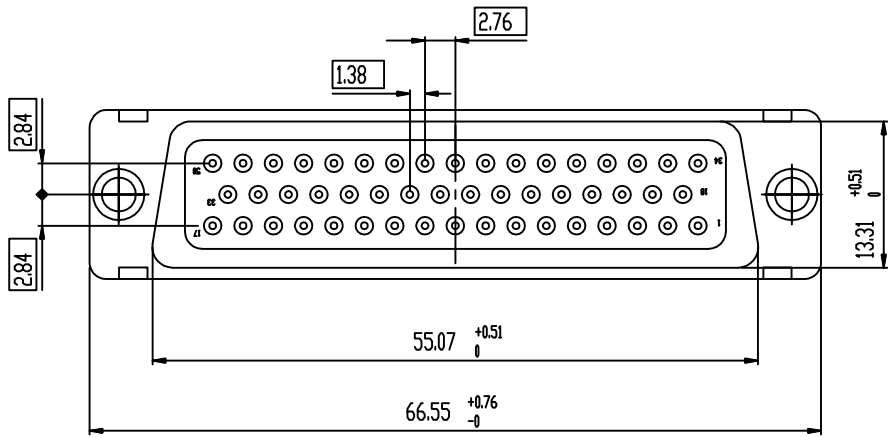
D

E

F





DIMENSIONS FOR SHELL SIZE D (50 CONTACTS)

LAYOUT AND CONNECTOR DIMENSIONS



Copyright FCI

FCI

www.fciconnect.com			surface 		tolerance std ISO 1302 ISO 406 ISO 1101						
TOLERANCES UNLESS OTHERWISE SPECIFIED											
Dr	M PESSON	2006/11/14	ANGULAR	LINEAR	0.X	±0.3	size A2	Scale 2:1	ECN	F12-0018	
Eng	P LEGARE	2006/11/14			0.XX	±0.1					
Chr	P LEGARE	2006/11/14			0.XXX	±0.05					
Appr	P LEGARE	2006/11/14	Product family				- Spec ref				
			SUB FEMALE DM HE508 series					no C01-8637-1746		Rev. C	
title with straight solder contact								eng			
catalog no			-					CUSTOMER		sheet 4 of 4	

PDM: Rev: C

STATUS: Released

Printed: Mar 14, 2012

A

B

C

D

E

F

Mouser Electronics

Authorized Distributor

Click to View Pricing, Inventory, Delivery & Lifecycle Information:

[FCI / Amphenol:](#)

[DAMF15S300N](#) [DDMF50S300N](#)