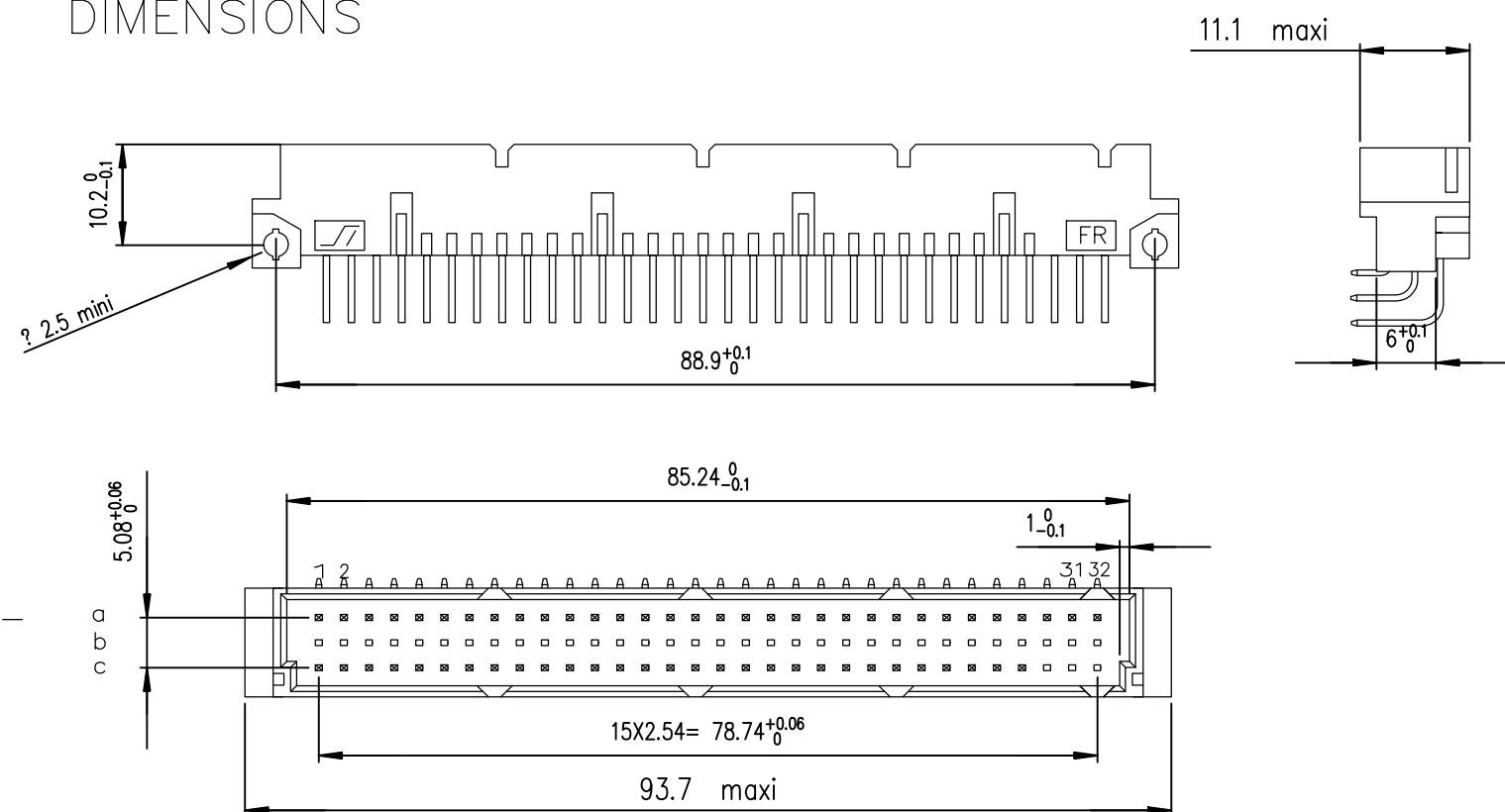


DIMENSIONS



TIN LEAD PART NUMBER

PART NUMBER

86093967113755121E1

86093967113765121E1

LEAD FREE PART NUMBER

PART NUMBER

86093967113755AGLF

86093967113765AGLF

PERFORMANCE CLASS

DIN 41612 CLASS 2 -----5

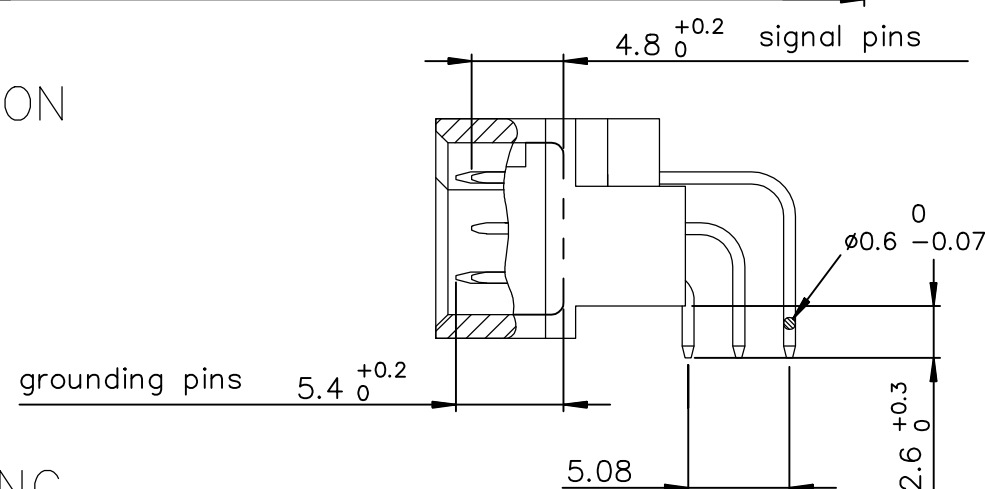
DIN 41612 CLASS 1 -----6

SPECIFICATION 121 or AGLF = Grounding pins in position : A1 / A32
C1 / C32

GENERAL CHARACTERISTICS AND ROHS INFORMATION:

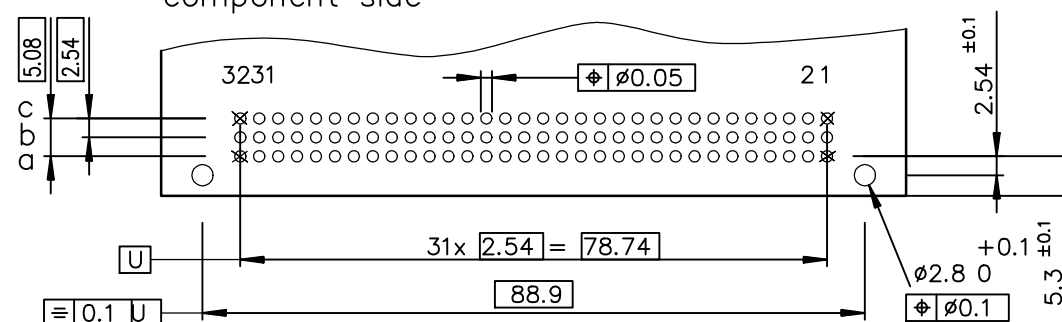
SEE DRAWING C-8609-0000A

TERMINATION

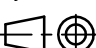




PCB DRILLING

component side



rev	ecn no	dr	date
A	-	-	1991/11/18
B	LS07-0073	HLE	2007/03/07
C	I11-0169	MJA	2011/10/11
-	-	-	-
-	-	-	-
-	-	-	-

www.fciconnect.com			surface ISO 1302		tolerance std ISO 406 ISO 1101		projection 		mm 	
			TOLERANCES UNLESS OTHERWISE SPECIFIED							
Dr	ROUILLARD	1991/11/18	ANGULAR	LINEAR	0.X	±0.1	size A3	Scale 1.5		
Eng	ROUILLARD	1991/11/18			0.XX	±0.1				
Chr	M JACOB	2011/10/11			0.XX* ±2	0.XXX				±0.1
Appr	BIJU K PAUL	2011/10/11	Product family				DIN STD	Spec ref -		
			title STANDARD MALE 3 ROW				dwg no C-8609-0221	Rev. C		
			96 CONTACTS							
			catalog no See table				CUSTOMER	sheet 1 of 1		



Copyright FCI.

Mouser Electronics

Authorized Distributor

Click to View Pricing, Inventory, Delivery & Lifecycle Information:

[FCI / Amphenol:](#)
[86093967113755AGLF](#)