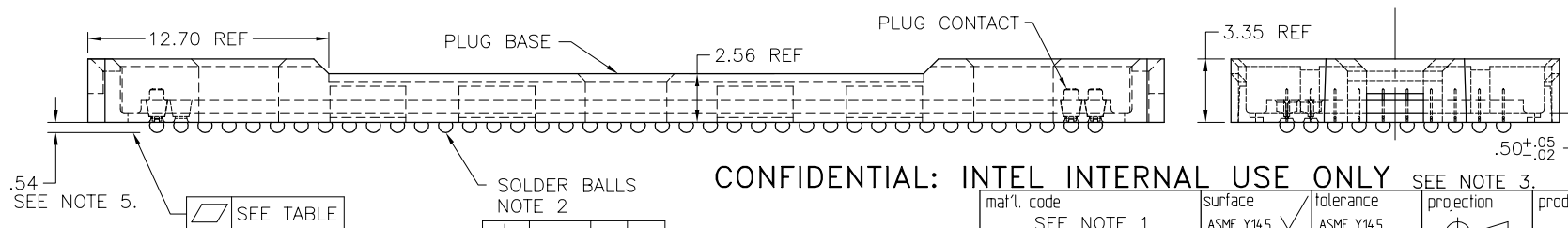
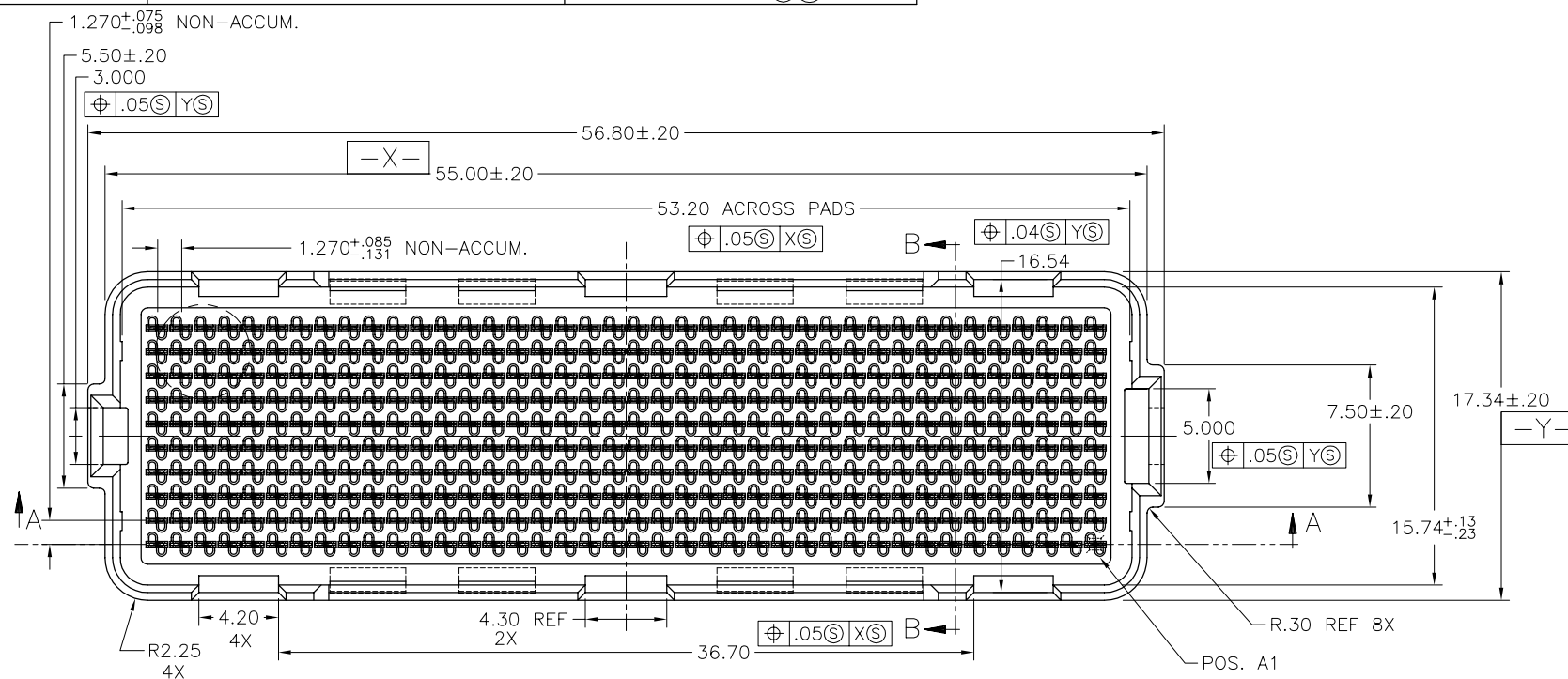


PRODUCT NUMBER	(SHOWN BELOW)	SOLDER BALL MATERIAL
84739-001	.000" (.000mm) TO .010" (.254mm)	EUTECTIC SnPb
84739-001LF	.000" (.000mm) TO .010" (.254mm)	SnAgCu LEAD FREE (6)(7)



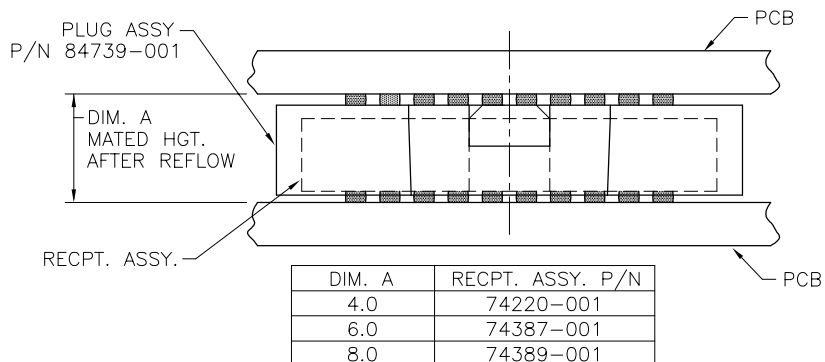
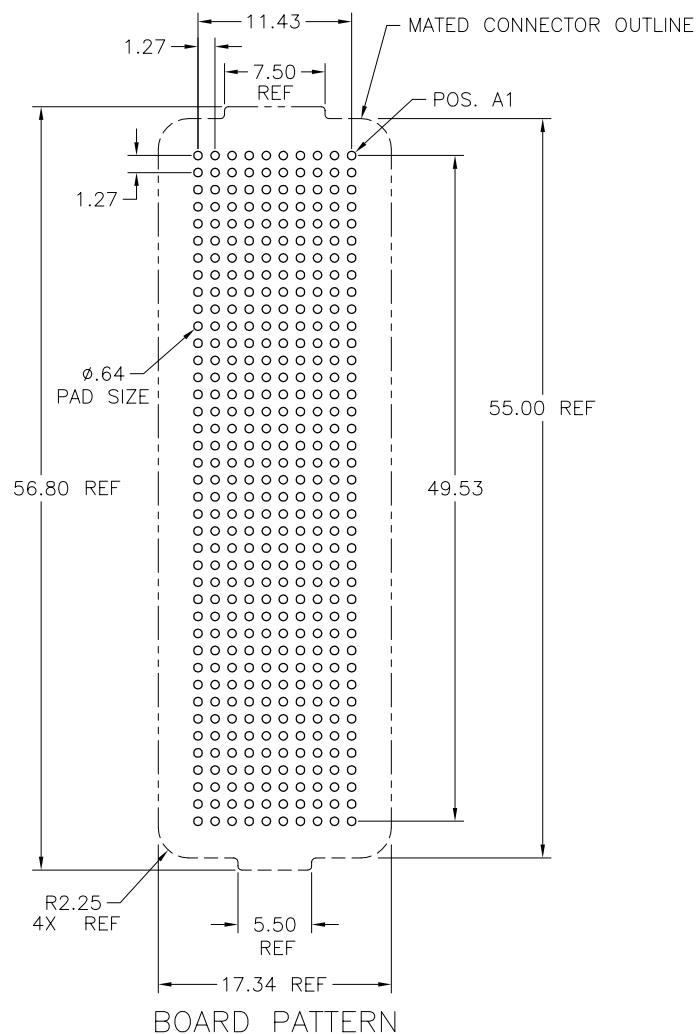
CONFIDENTIAL: INTEL INTERNAL USE ONLY SEE NOTE 3.

mat'l. code	SEE NOTE 1	surface	ASME Y14.5 ✓	tolerance	ASME Y14.5	projection	product family
ltr	ec'n no	dr	date	tolerances unless otherwise specified		MM	MEG-ARRAY
A	V81068	DRW	10.7.98	angles	X*3		
B	V90417	DRW	3.5.99	0° ±2'	.XX*.13		
C	V00181	HLJ	09.07.00		XXX*.051	scale 3:1	
D	V04-0940	VS	12/11/04	dr	D. WAUGHEN	9.21.98	
E	V05-0825	DAI	09/29/05	engr	M. HAHN	9.21.98	
F	V06-0046	DAI	01/24/06	chr	M. HAHN	9.21.98	
G	V06-0560	LP	2006/07/14	appd	M. HAHN	9.21.98	
sheet index	revision sheet	G	G	G			
		1	2	3			



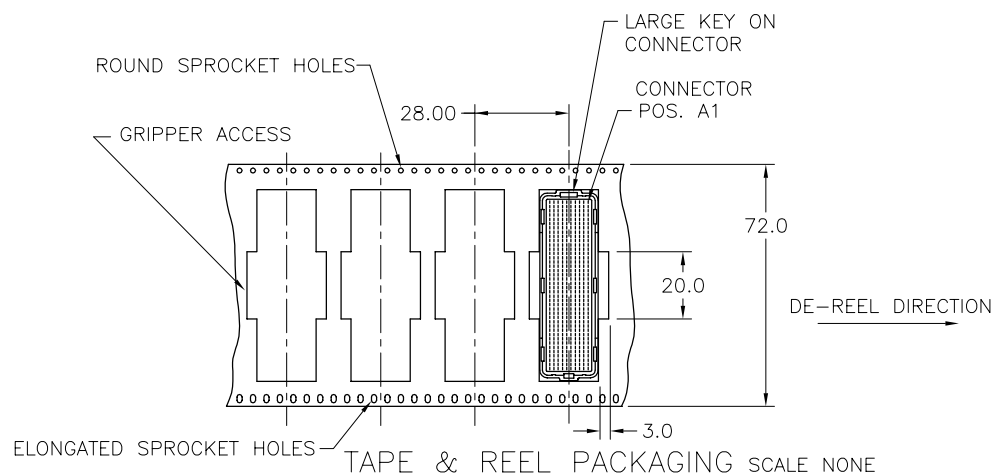
title	0mm PLUG ASSY 10 X 40 = 400 POS.
product family	MEG-ARRAY
dwg no	84739
sheet	1 of 3
size	A4
type	CUSTOMER Drawing

WAS SK-40415



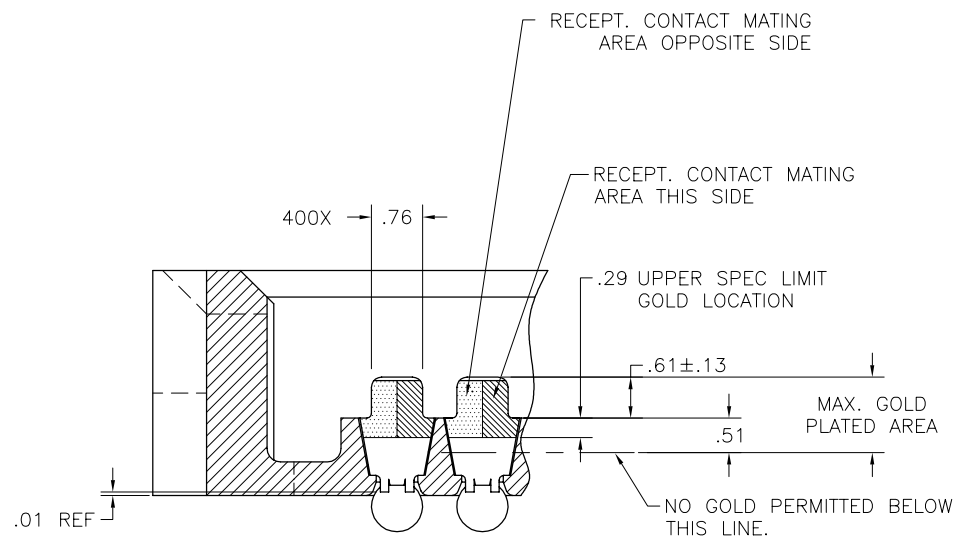
MATED HEIGHT AFTER REFLOW IS BASED ON ϕ .64mm PAD (METAL-DEFINED) AND .13mm SOLDER PASTE STENCIL THICKNESS.

END VIEW - MATED CONNECTORS SCALE NONE

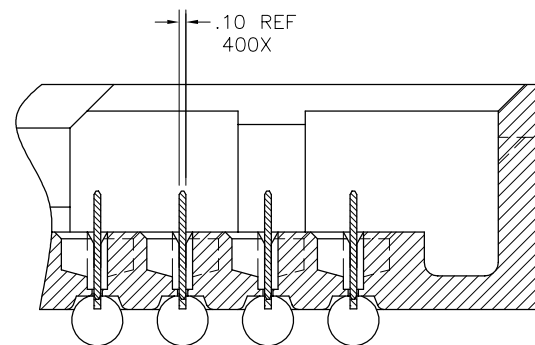


CONFIDENTIAL: INTEL INTERNAL USE ONLY. SEE NOTE 3.

mat'l. code SEE NOTE 1				surface ASME Y14.5 ✓	tolerance ASME Y14.5	projection mm	product family MEG-ARRAY
ltr	ecr no	dr	date	tolerances unless otherwise specified		mm	title
g				angles	X *3		0mm PLUG ASSY
				0° ±2'	XX *13	scale 2:1	10 X 40 = 400 POS.
				dr	D.WAUGHEN 9.21.98	FCI	dwg no
				enr	M.HAHN 9.21.98		sheet 2 of 3
				chr	M.HAHN 9.21.98		size
				appd	M.HAHN 9.21.98		A4
sheet index	revision sheet						type CUSTOMER Drawing



SECT. A-A

SECT. B-B
ROTATED 90° C.W.

NOTES:

1. MAT'L:

HOUSING: NATURAL LCP (GRADE PROPRIETARY).

CONTACT: COPPER-NICKEL ALLOY C72500.

PLATING:

CONTACT: 15-40u"/.38-1.02um Au OVER

30-120u"/.76-3.05um Ni.

SOLDER BALL: (SEE TABLE ON SHEET1)

EUTECTIC SnPb OR LEAD FREE

95.5Sn/4Ag/0.5Cu

2. SOLDER BALLS WILL NOT BE PERFECT SPHERICAL SHAPE DUE TO REFLOW ATTACHMENT. NOMINAL INITIAL SOLDER BALL Ø.76 (.030").

3. DRAWING NO. 84740 TO BE USED FOR INTEL CUSTOMERS (OEM).


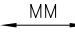

4. REFER TO 07-747 INTEL PROCUREMENT SPEC.

5. SOLDER BALL HEIGHT TOLERANCE PENDING FINAL AGREEMENT.

6. FOR PROPER APPLICATION FOLLOW FCI APPLICATION SPECIFICATION GS-20-033 LEAD FREE SOLDER BALLS WILL NOT SOLDER PROPERLY IN A LEADED SOLDER PROCESS DUE TO A HIGHER REFLOW TEMPERATURE. LEAD FREE PRODUCT IS THEREFORE NOT BACKWARDS COMPATIBLE WITH LEADED OR SOME SOLDERING APPLICATIONS. REFERENCE FCI APPLICATION SPECIFICATION

7. THIS PRODUCT MEETS EUROPEAN UNION DIRECTIVES AND OTHER COUNTRY REGULATIONS AS DESCRIBED IN GS-22-008 PRODUCT MEETING THIS DIRECTIVE IS IDENTIFIED IN THE LOT CODE NUMBER MARKED ON EACH PART BY HAVING AN "X" IN THE SEVENTH CHARACTER POSITION

CONFIDENTIAL: INTEL INTERNAL USE ONLY. SEE NOTE 3.

mat'l. code		surface		tolerance		projection		product family	
SEE NOTE 1		ASME Y14.5		ASME Y14.5				MEG-ARRAY	
ltr	ecr no	dr	date	tolerances unless otherwise specified				title	
G				angles	line fit	X*.3		0mm PLUG ASSY.	
				0° ±2°		XX*.13		10 X 40 = 400 POS.	
						XXX*.051		scale 10:1	
		dr	D. WAUGHEN		9.21.98			dwg no	
		enr	M. HAHN		9.21.98			sheet 3 of 3	
		chr	M. HAHN		9.21.98			84739	
		appd	M. HAHN		9.21.98			size A4	
sheet index	revision sheet							type CUSTOMER Drawing	

Mouser Electronics

Authorized Distributor

Click to View Pricing, Inventory, Delivery & Lifecycle Information:

[FCI / Amphenol:](#)

[84739-001](#) [84739-001LF](#)