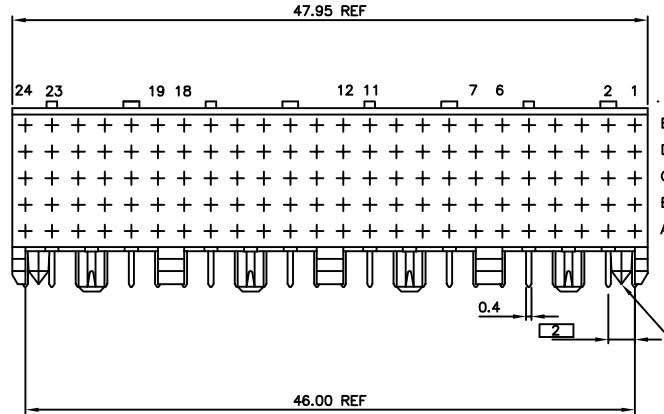
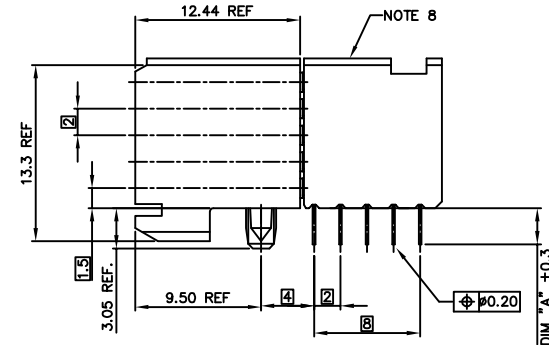





1		2		3		4	
PRODUCT NUMBER	ASSY. STYLE	BOARD ATTACHMENT	TAIL TERMINATION	TAIL LGTH. DIM "A"	PCB THICKNESS	NOTES	PLATING CONTACT AREA:
SEE TABLE SH. 3	1	PRESS-PEG	SOLDER-TO-BOARD	2.90mm	1.6mm	NOTE 7	DASH NR:
	1	PRESS-PEG	SOLDER-TO-BOARD	3.53mm	2.4mm	NOTE 7	-1YY/1YYLF
	2	HEAT-STAKE	SOLDER-TO-BOARD	2.90mm	1.6mm		PERFORMANCE LEVEL
	2	HEAT-STAKE	SOLDER-TO-BOARD	3.53mm	2.4mm		TELCORDIA CO
	3	PRESS-PEG	PRESS-FIT	2.90mm	1.6mm	NOTE 7	-2YY/2YYLF
	3	PRESS-PEG	PRESS-FIT	3.53mm	2.4mm	NOTE 7	CUSTOMER SPECIAL
							-3YY/3YYLF
							CUSTOMER SPECIAL



NOTE 7

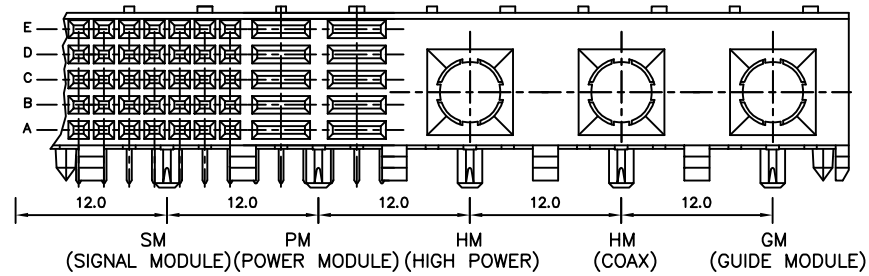


ASSY. STYLE 1

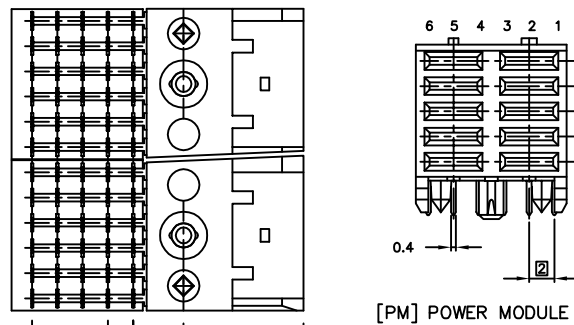
mat'l. code SEE NOTES				tolerances unless otherwise specified		CUSTOMER COPY		FCI www.fciconnect.com	
ltr	ecn no	dr	date	linear	.X ±.3	projection 	title		
H	V00851	JWS	6/2/00		.XX ±.10		5 ROW R/A HYBRID		
J	V01991	JWS	8/15/00		.XXX ±.050		RECEPTACLE - 48MM		
K	V03-0722	LP	8/21/03	angles	0° ±2°	MM ←→	product family size	METRAL (tm) dwg no	code 213
L	V05-1012	JRV	11/3/05	dr	M.FETROW 6/25/97				
M	DG07-0173	Cenh	6/05/07	enr	C.PENDLETON 6/25/97				
N	DG08-0171	TER	9/3/08	chr	C.PENDLETON 6/25/97	scale 1:1	A	73951	sheet 1 of 3
P	DG09-0068	Cenh	06/06/09	appd	C.PENDLETON 6/25/97				
sheet	revision	P	P	P					
index	sheet	1	2	3					

cage code
22526

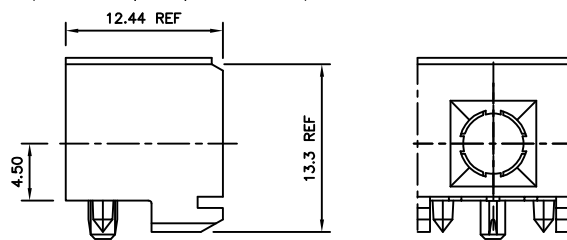
All rights strictly reserved. Reproduction or issue to third parties in any form whatever is not permitted without written authority from the proprietor.
Property of FCI. Copyright FCI.



[SM] SIGNAL MODULE



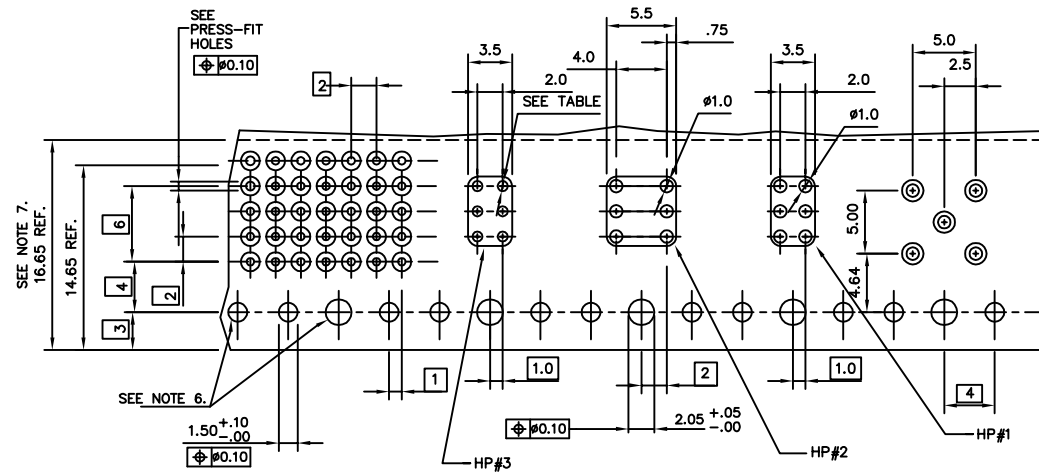
[PM] POWER MODULE



[HM] HYBRID MODULE

TABLE 1	
PLATED THRU HOLE REQUIREMENTS	
HOLE DIAMETER AFTER PLATING	0.65-0.80
DRILLED HOLE	0.81-0.86 (0.85 DRILL)
COPPER PLATING	0.025 - 0.05
SnPb PLATING	0.005-0.015

SEE DRAWING 58351
FOR OTHER OPTIONS



RECOMMENDED HOLE PATTERN,
COMPONENT SIDE.

[illegible]

		cage code			
		22526			



PRODUCT NO	ASSY TYPE	TAIL LENGTH	ROW	24	23	22	21	20	19	18	17	16	15	14	13	12	11	10	9	8	7	6	5	4	3	2	1
73951-X001 SEE NOTE 11 FOR LEAD FREE OPTIONS	1	3.53	E							X X X X X X X X						X X X X X X X X						X X X X X X X X					
			D																								
			C																								
			B																								
			A																								
MODULE TYPE				HM						SM						SM						SM					
73951-X002 SEE NOTE 11 FOR LEAD FREE OPTIONS	1	3.53	E							X X X X X X X X						X X X X X X X X						X X X X X X X X					
			D																								
			C																								
			B																								
			A																								
MODULE TYPE				GM						SM						SM						SM					
73951-X003 SEE NOTE 11 FOR LEAD FREE OPTIONS			E	UNAVAILABLE						UNAVAILABLE						UNAVAILABLE											
			D																								
			C																								
			B																								
			A																								
MODULE TYPE																											
73951-X004 SEE NOTE 11 FOR LEAD FREE OPTIONS			E	UNAVAILABLE						UNAVAILABLE						UNAVAILABLE											
			D																								
			C																								
			B																								
			A																								
MODULE TYPE																											
73951-X005 SEE NOTE 11 FOR LEAD FREE OPTIONS	3	3.53	E							X X X X X X X X						X X X X X X X X						X X X X X X X X					
			D																								
			C																								
			B																								
			A																								
MODULE TYPE				HM						SM						SM						SM					
73951-X006 SEE NOTE 11 FOR LEAD FREE OPTIONS	3	2.90	E							X X X X X X X X						X X X X X X X X						X X X X X X X X					
			D																								
			C																								
			B																								
			A																								
MODULE TYPE				GM						PM						PM						PM					
73951-X007 SEE NOTE 11 FOR LEAD FREE OPTIONS	3	2.90	E							X X X X X X X X						X X X X X X X X											
			D																								
			C																								
			B																								
			A																								
MODULE TYPE				SM						SM						SM						GM					


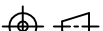

NOTES:

- CONNECTOR MATERIALS:
HOUSING: LCP, 30% GLASS FILLED,
UL 94-V0 COMPLIANT
TERMINAL: PHOSPHOR BRONZE ALLOY
- PLATING ON TAIL:
PRESS-FIT TYPE
73951-XYX IS 0.5-1.5um SnPb
73951-XYLF IS 0.5-1.5um Sn (LEAD FREE)
SOLDER-TO-BOARD TYPE
73951-XYX IS 2-8um SnPb
73951-XYLF IS 2-8um Sn (LEAD FREE)
- PRODUCT SPECIFICATION:
GS-12-002
- APPLICATION SPECIFICATIONS:
BUS-20-061
GS-20-001
TA-941
- PRODUCT MARKING: (PART NUMBER & LOT CODE).
- INDICATED HOLES ARE UNPLATED.
- DIAMOND LOCATION PEG ARE ONLY EXISTED ON THE BOTH SIDES OF PRODUCT.
- TOP SURFACE OF PRESS BLOCK MAY EXTEND UP TO 0.4MM HIGHER THAN HOUSING. THIS MAY AFFECT THE TAIL LENGTH BEFORE APPLICATION TO A BOARD.
- DIMENSION APPLIES TO BOTH PRESS-FIT AND SOLDER TAIL TERMINATIONS.
- THESE PRODUCTS WHERE THE PART NUMBER ENDS IN "LF" MEET THE EUROPEAN UNION DIRECTIVES AND OTHER COUNTRY REGULATIONS AS DESCRIBED IN GS-22-008.

ALL PRODUCTS MANUFACTURED BEFORE APRIL 2006 WILL WITHSTAND EXPOSURE TO 240°C FOR 60 SECONDS IN A CONVECTION, INFAR-RED OR VAPOR PHASE REFLOW OVEN.

ALL PRODUCTS MANUFACTURED AFTER MARCH 2006 WILL WITHSTAND EXPOSURE TO 260°C FOR 60 SECONDS IN A CONVECTION, INFAR-RED OR VAPOR PHASE REFLOW OVEN.
- FOR LEAD FREE PART NUMBERS ADD "LF" SUFFIX. EXAMPLE: 73951-XYXLF.

LOAD PATTERN	
X	LOADED
-	NOT LOADED
HP#1	PWR. CONN. LOADED
HP#3	PWR. CONN. LOADED

mat'l. code SEE NOTES				tolerances unless otherwise specified		CUSTOMER COPY		 www.fciconnect.com	
ltr	ecn no	dr	date	linear	.X ±.3	projection 	title 5 ROW R/A HYBRID RECEPTACLE – 48MM		
P					.XX ±.10				
					.XXX ±.050				
				angles	0° ±2°	 scale 1:1	product family METRAL (tm)		code
				dr	M.FETROW		6/25/97	size dwg no 73951	213
				engr	C.PENDLETON		6/25/97		
				chr	C.PENDLETON		6/25/97		
				appd	C.PENDLETON	6/25/97			
sheet index	revision sheet								

Mouser Electronics

Authorized Distributor

Click to View Pricing, Inventory, Delivery & Lifecycle Information:

[FCI / Amphenol:](#)

[73951-9006](#)