

REFERENCE SPECIFICATIONS

-NFC 93425 (in compliance with HE 507)

PHYSICAL CHARACTERISTICS

-INSULATOR MATERIAL: THERMOPLASTIC UL94V0
-CONTACT MATERIAL: BRASS

-ACCESSORIES: BRASS
-SHELLS: STEEL

ELECTRICAL CHARACTERISTICS

-NOMINAL CURRENT: 7.5A
-CONTACT RESISTANCE: <= 7.3 m ohms
-CONTACT/CONTACT : >=1000 V
-CONTACT/GROUND : >=1200 V
-INSULATION RESISTANCE: >=5000 MOhms

ENVIRONMENTAL CHARACTERISTICS

- CLIMATIC CATEGORY: 55/125/21
TEMPERATURE RANGE -55°C TO +125°C
DAMP HEAT STEADY STATE 21 DAYS
SALT SPRAY 48 HOURS

MECHANICAL CHARACTERISTICS

RETENTION AGAINST TORQUE: - Threaded insert: 0.7 N.m minimum
- Female screw : 0.5 N.m minimum

NOTE RoHS INFORMATION

- The "LF" products meet european union Directives and other country regulations as described in GS-22-008.
- Termination plating spec:
Ni + Gold
- Active area plating spec:
Ni + Gold
- Shell plating :2 to 4µm Cu + Ni + 3 to 10µm Sn,pure bright
- Accessories: Sn pure bright + nickel
- Packaging spec: See GS-14-920

DBL13W3P043A00LF

Series

Shell size: **E A B C D**
see sheet 3

Front accessory definition
see sheet 2

Blank :without accessory
L :threaded insert M3
O :threaded insert UNC 4-40

Layout of contacts (see sheet 3)

Contacts

P :Pin

Plating

Blank signal solder bucket 200 matings/unmatings
043 signal solder bucket 500 matings/unmatings

PCB accessory definition

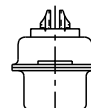
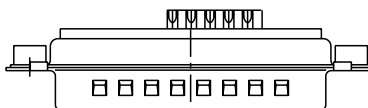
A without accessory on PCB

Power contacts

00 without power contact

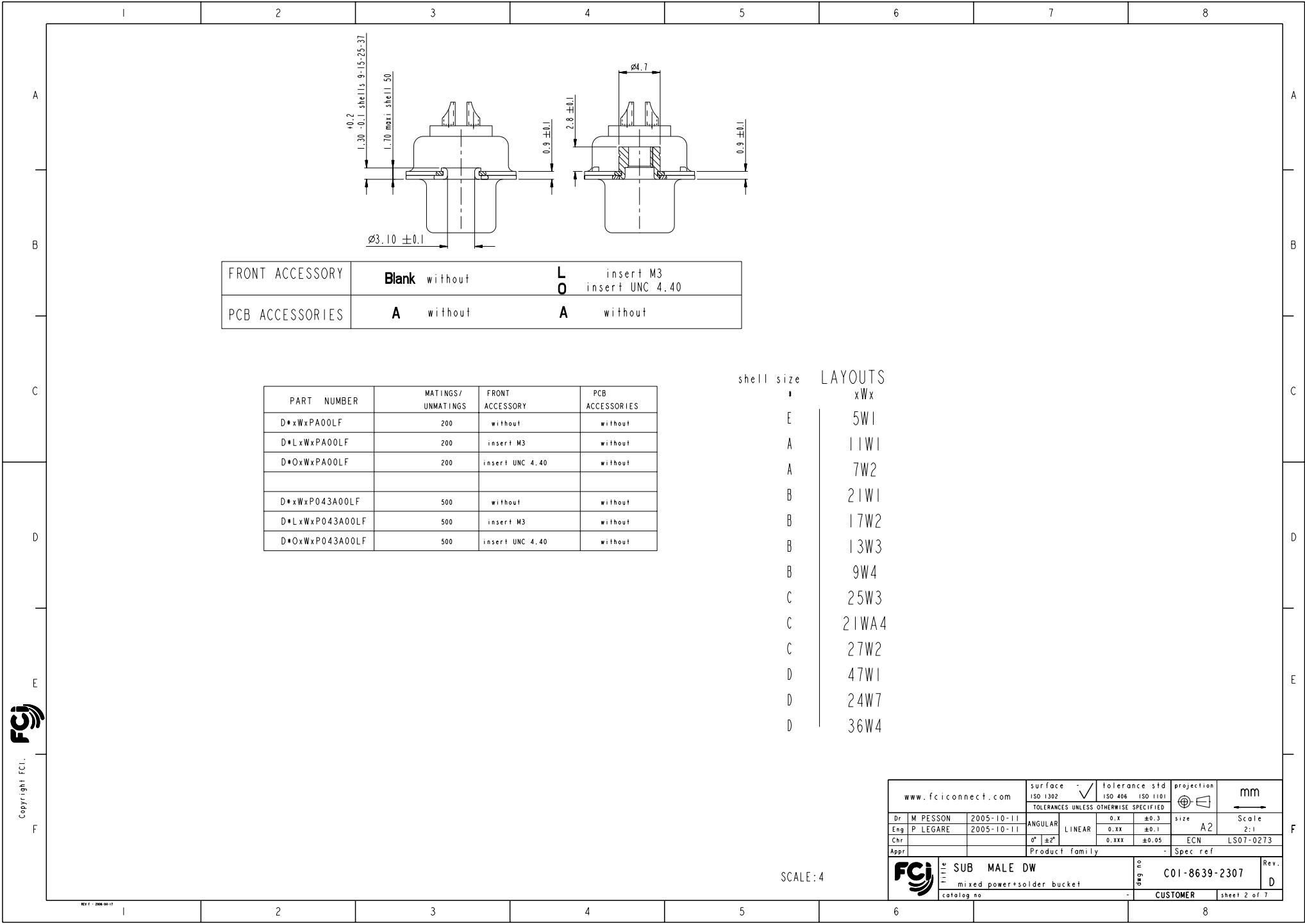
See note RoHS

13W3 FOR EXAMPLE



rev	ecn no	dr	date
A	LS05-0101	MPE	2005-10-11
B	LS06-0208	LGO	2006-12-13
C	LS07-0173	MPE	2007-06-18
D	LS07-0273	MPE	2007-10-31
-	-	-	-
-	-	-	-
-	-	-	-

www.fciconnect.com		surface	-	tolerance std	ISO 1302	ISO 406	ISO 1101	projection	mm
		TOLERANCES UNLESS OTHERWISE SPECIFIED							
Dr M PESSON		2005-10-11	ANGULAR	0.X	±0.3	size	A2	Scale	2:1
Eng P LEGARE		2005-10-11	LINEAR	0.XX	±0.1	ECN	LS07-0273		
Chr			0° ±2°	0.XXX	±0.05	Product family	-	Spec ref	
Appr									
Title		SUB MALE DW			dag no		C01-8639-2307		
mixed power+solder bucket							Rev. D		
catalog no							CUSTOMER		
							sheet 1 of 7		



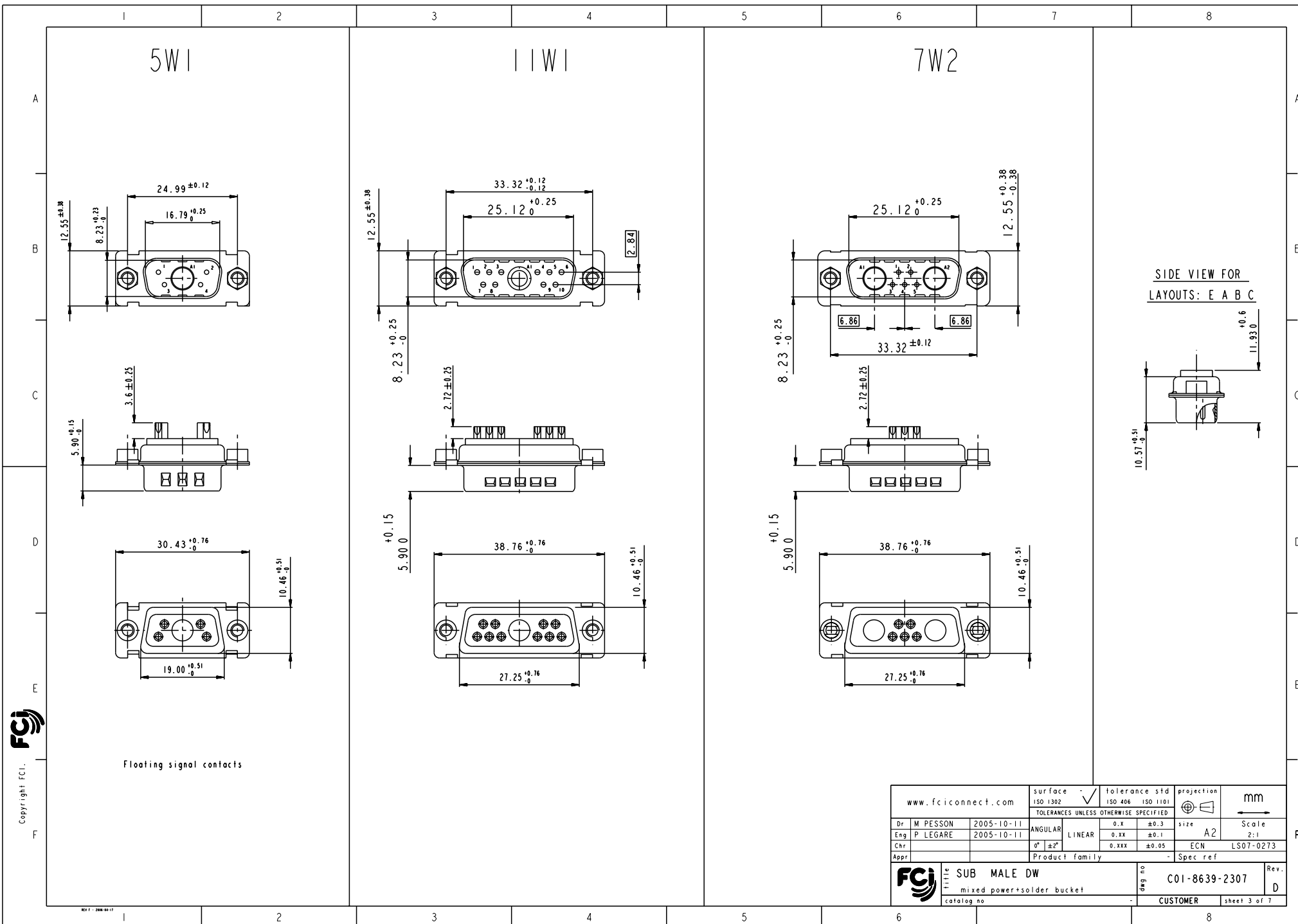
FRONT ACCESSORY	Blank without	L insert M3
PCB ACCESSORIES	A without	O insert UNC 4.40

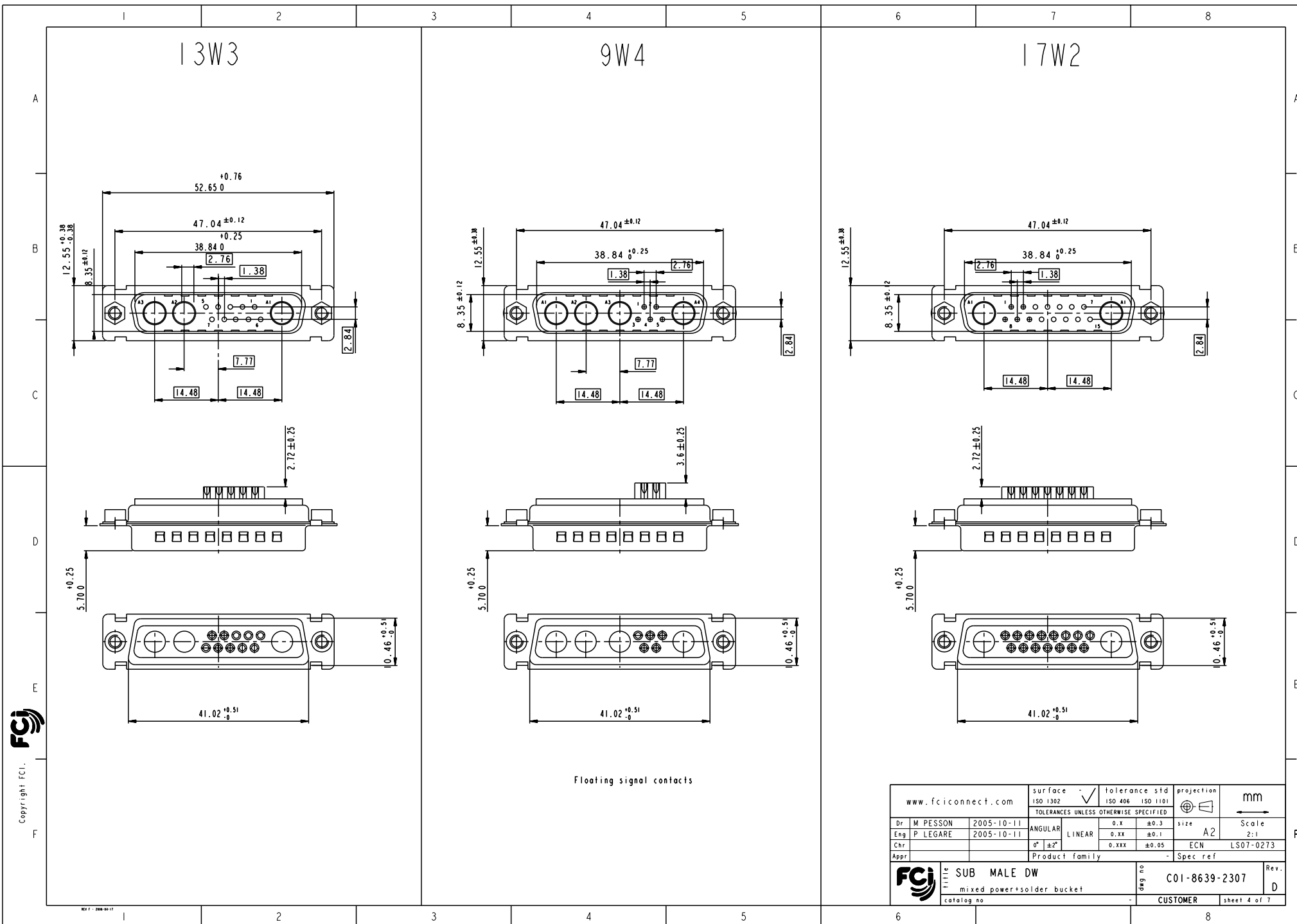
PART NUMBER	MATINGS/ UNMATINGS	FRONT ACCESSORY	PCB ACCESSORIES
D*xWxPA00LF	200	without	without
D*LxWxPA00LF	200	insert M3	without
D*OxWxPA00LF	200	insert UNC 4.40	without
D*xWxP043A00LF	500	without	without
D*LxWxP043A00LF	500	insert M3	without
D*OxWxP043A00LF	500	insert UNC 4.40	without

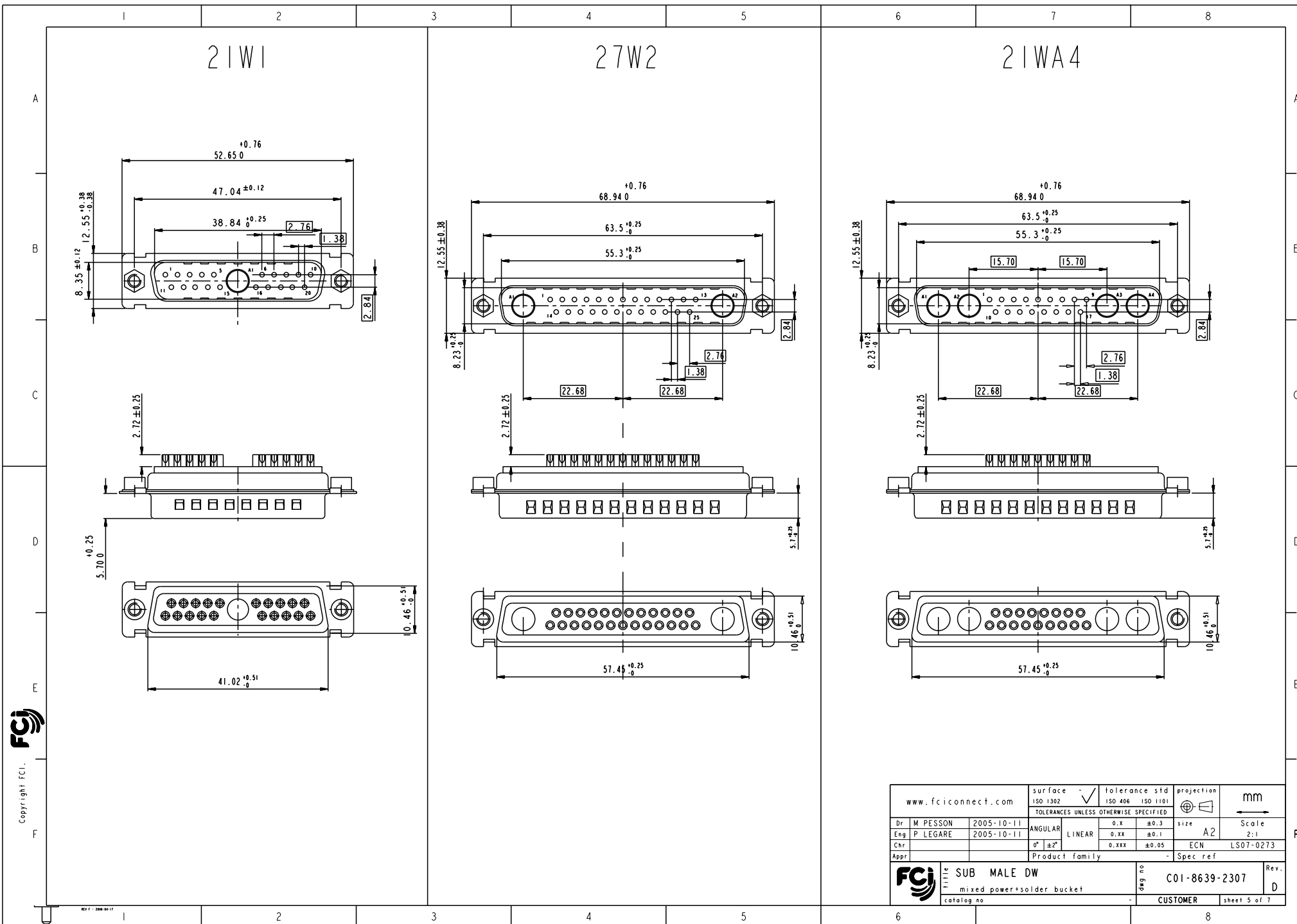
shell size	LAYOUTS
E	xWx 5W1
A	11W1
A	7W2
B	21W1
B	17W2
B	13W3
B	9W4
C	25W3
C	21WA4
C	27W2
D	47W1
D	24W7
D	36W4

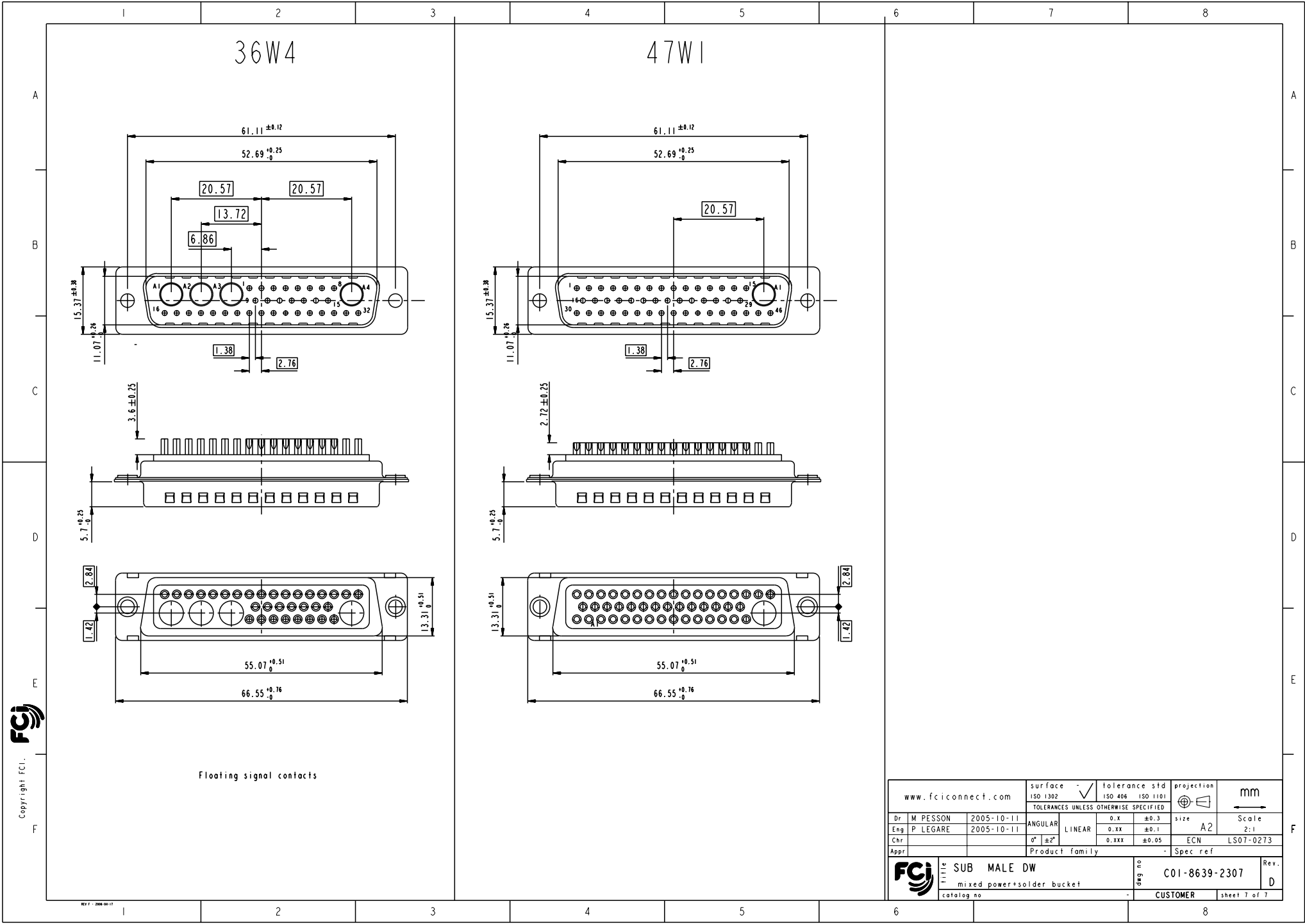
SCALE: 4

www.fciconnect.com		surface	ISO 1302	tolerance std	ISO 406	ISO 1101	projection	mm
		TOLERANCES UNLESS OTHERWISE SPECIFIED					size	Scale
Dr	M PESSON	2005-10-11	ANGULAR	0.X	±0.3		A2	2:1
Eng	P LEGARE	2005-10-11	LINEAR	0.XX	±0.1			
Chr			0° ±2°	0.XXX	±0.05		ECN	LS07-0273
Appr			Product family			Spec ref		
FCI		SUB MALE DW		deg no		C01-8639-2307		Rev.
		mixed power+solder bucket						D
		catalog no				CUSTOMER		sheet 2 of 7









www.fciconnect.com		surface	ISO 1302	tolerance std	ISO 406	ISO 1101	projection	mm
		TOLERANCES UNLESS OTHERWISE SPECIFIED					size	Scale
Dr	M PESSON	2005-10-11	ANGULAR	0.X	±0.3		A2	2:1
Eng	P LEGARE	2005-10-11	LINEAR	0.XX	±0.1		ECN	LS07-0273
Chr			0° ±2°	0.XXX	±0.05		Spec ref	
Appr			Product family					
FCi		SUB MALE DW		mixed power+solder bucket		C01-8639-2307		Rev.
catalog no				CUSTOMER		sheet 7 of 7		D

Mouser Electronics

Authorized Distributor

Click to View Pricing, Inventory, Delivery & Lifecycle Information:

[Amphenol:](#)

[DAO11W1PA00LF](#) [DBO17W2PA00LF](#) [DDO24W7PA00LF](#) [DDL24W7PA00LF](#) [DAO7W2P043A00LF](#)
[DE5W1P043A00LF](#) [DEL5W1P043A00LF](#) [DCO27W2P043A00LF](#)