

REFERENCE SPECIFICATIONS

-NFC 93425 (in compliance with HE 507)

PHYSICAL CHARACTERISTICS

-INSULATOR MATERIAL: THERMOPLASTIC UL94V0

-CONTACT MATERIAL: PHOSPHOR BRONZE (signal contact)
GOLD OVER NICKEL

-ACCESSORIES: STAINLESS STEEL or BRASS
Cadmium plated, yellow passivation

-SHELLS: STEEL
Cadmium plated, yellow passivation

ELECTRICAL CHARACTERISTICS

-NOMINAL CURRENT: 7.5A

-CONTACT RESISTANCE: <= 7.3 m ohms signal

-CONTACT/CONTACT : >=1000 V

-CONTACT/GROUND : >=1200 V

-INSULATION RESISTANCE: >=5000 MOhms

ENVIRONMENTAL CHARACTERISTICS

- CLIMATIC CATEGORY: 55/125/21

TEMPERATURE RANGE -55°C TO +125°C

DAMP HEAT STEADY STATE 56 DAYS

SALT SPRAY 48 HOURS

MECHANICAL CHARACTERISTICS

- RETENTION AGAINST TORQUE: - Threaded insert: 0.7 N.m minimum
- Female screw : 0.5 N.m minimum

Series

DBML13W3S043N

Shell size: **E A B C D**
see sheet 3

M :characteristic
for the DM series

Front accessory definition
see sheet 2

Blank :without accessory

O :threaded insert M3

L :threaded insert UNC 4-40

V :female screw UNC 4-40

F :floating mounting

Layout of contacts

Contacts

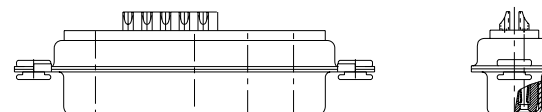
S :Socket

Plating



Blank solder bucket 500 matings/unmatings

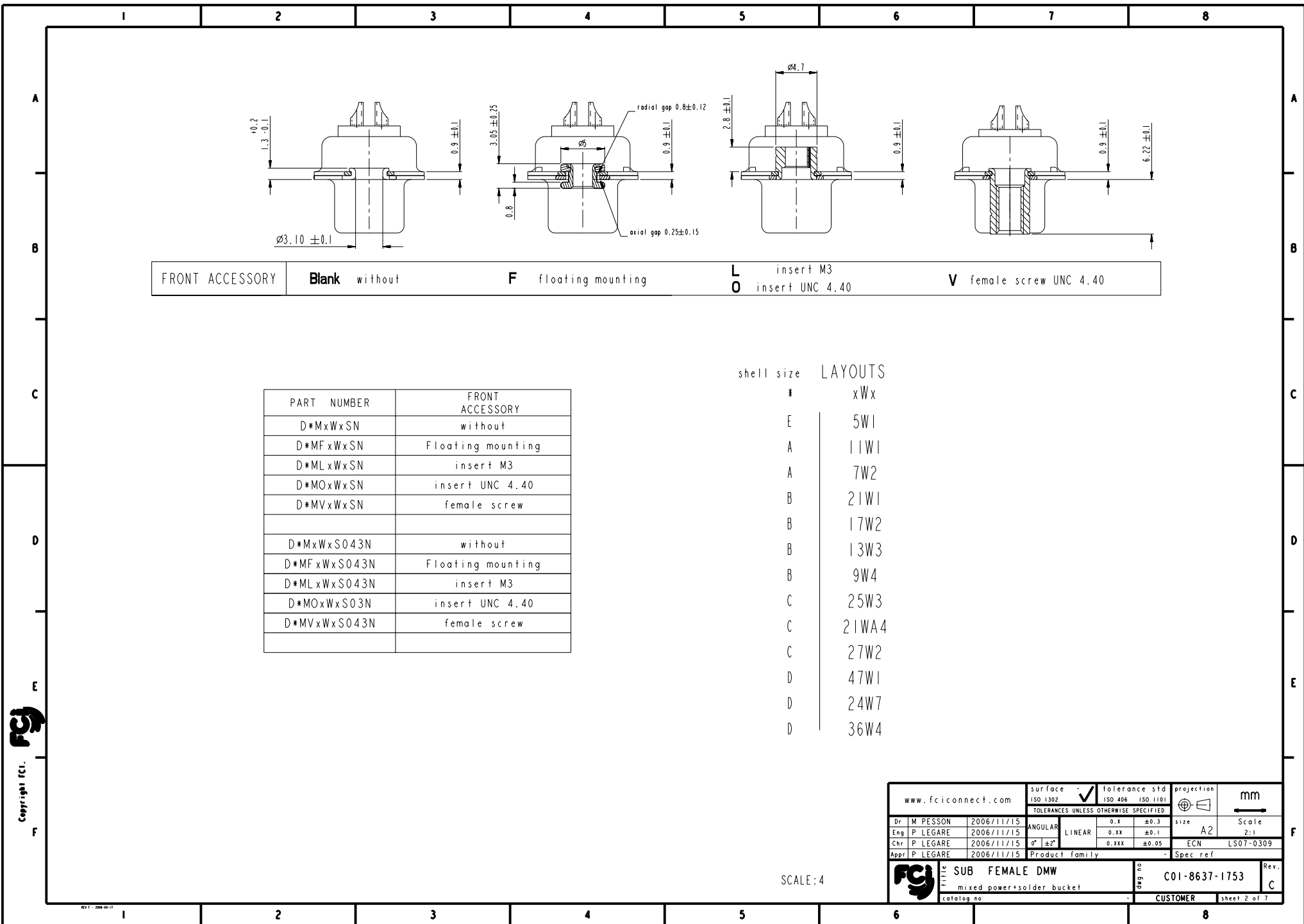
043 solder bucket 500 matings/unmatings for harsh environment

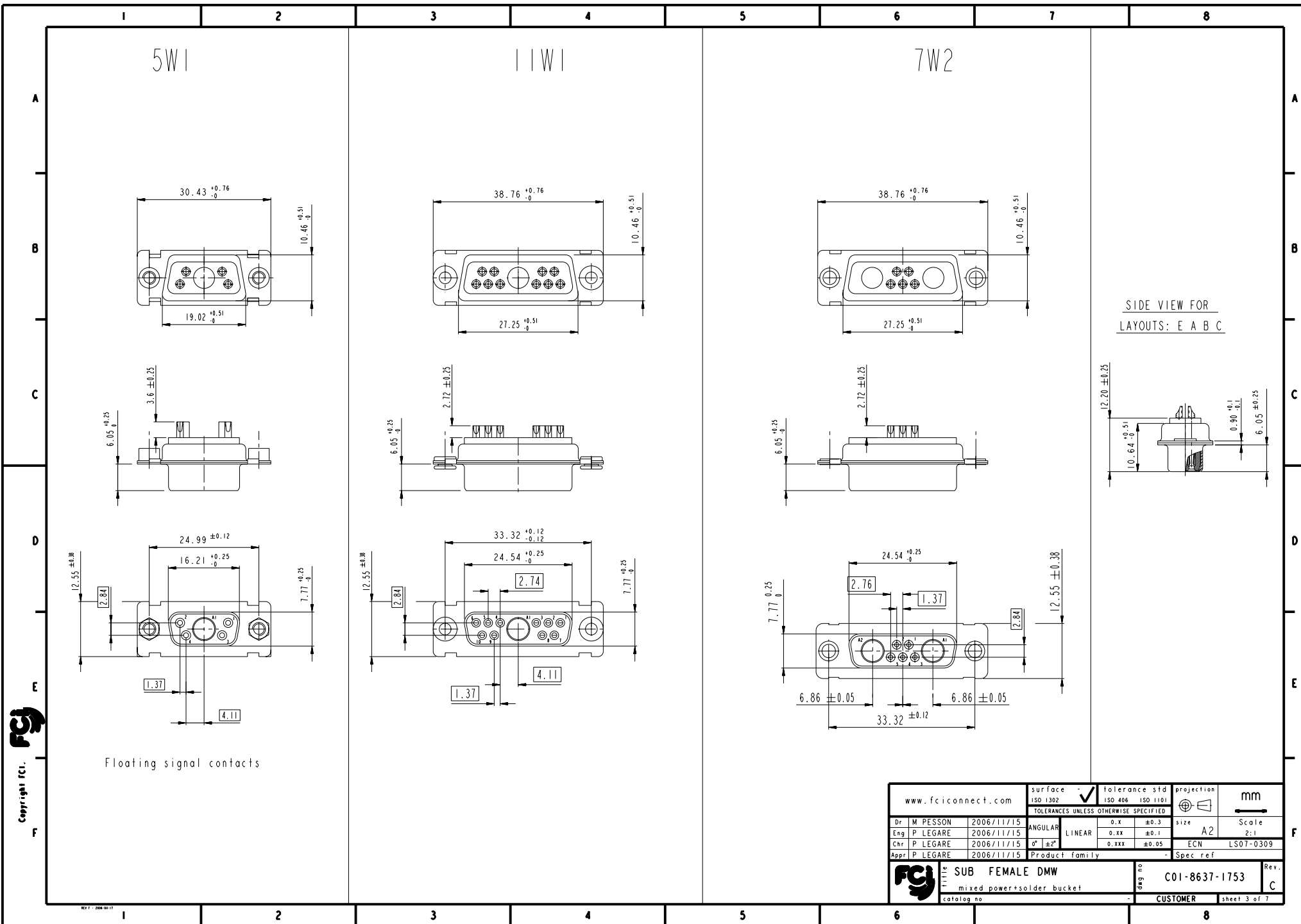
N :obligatory indication for HE 507 series







13W3 FOR EXAMPLE

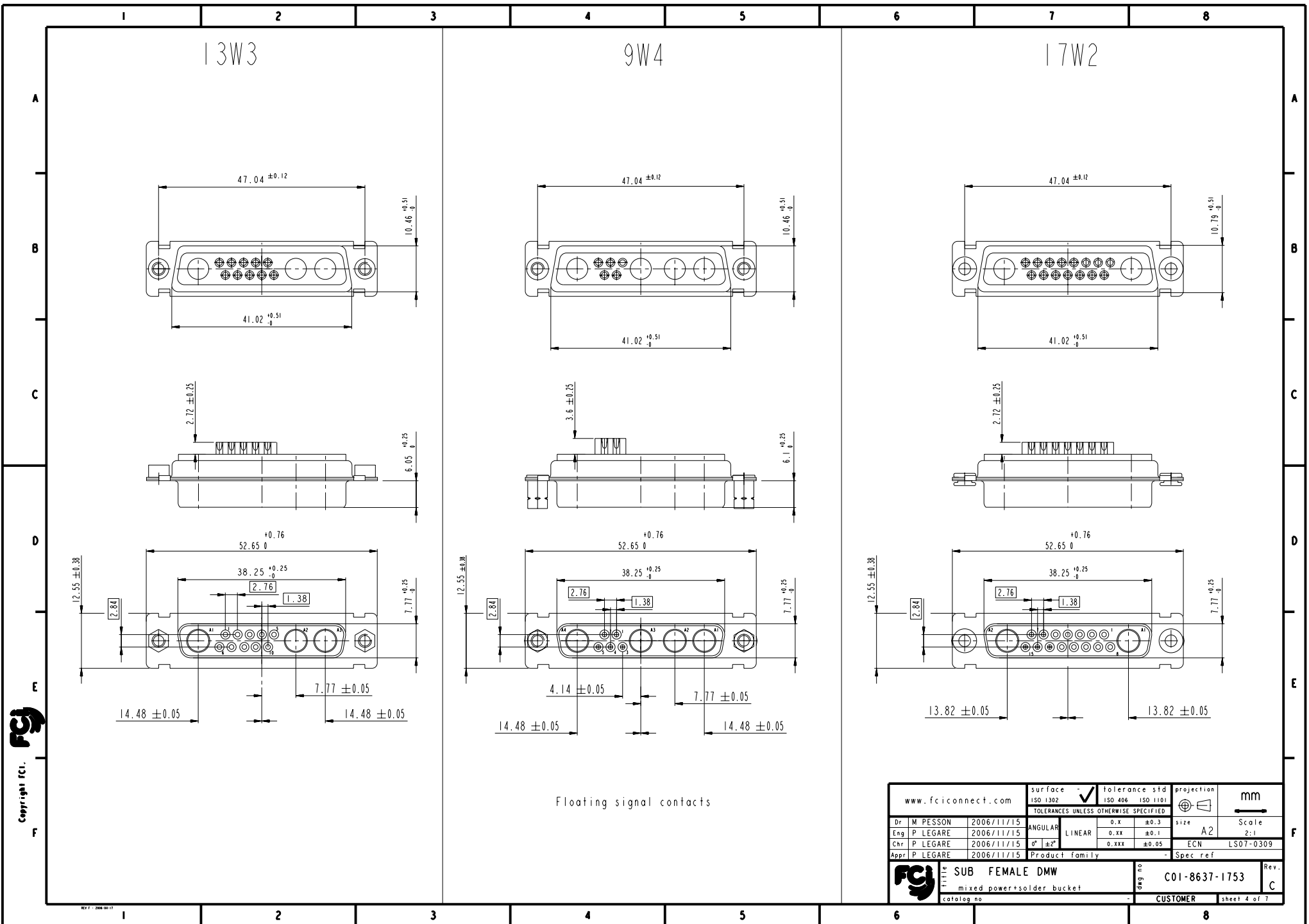
www.fciconnect.com				surface - <input checked="" type="checkbox"/> tolerance std ISO 1302 ISO 406 ISO 1101		projection  mm	
				TOLERANCES UNLESS OTHERWISE SPECIFIED			
Dr M PESSON 2006/11/15				ANGULAR		0.X	±0.3
Eng P LEGARE 2006/11/15				LINEAR		0.XX	±0.1
Chr P LEGARE 2006/11/15				0° ±2°		0.XXX	±0.05
Appr P LEGARE 2006/11/15				Product family		ECN LS07-0309	
						- Spec ref	
				SUB FEMALE DMW		deg no C01-8637-1753	
				mixed power+solder bucket		Rev. C	
				catalog no		CUSTOMER	
						sheet 1 of 7	

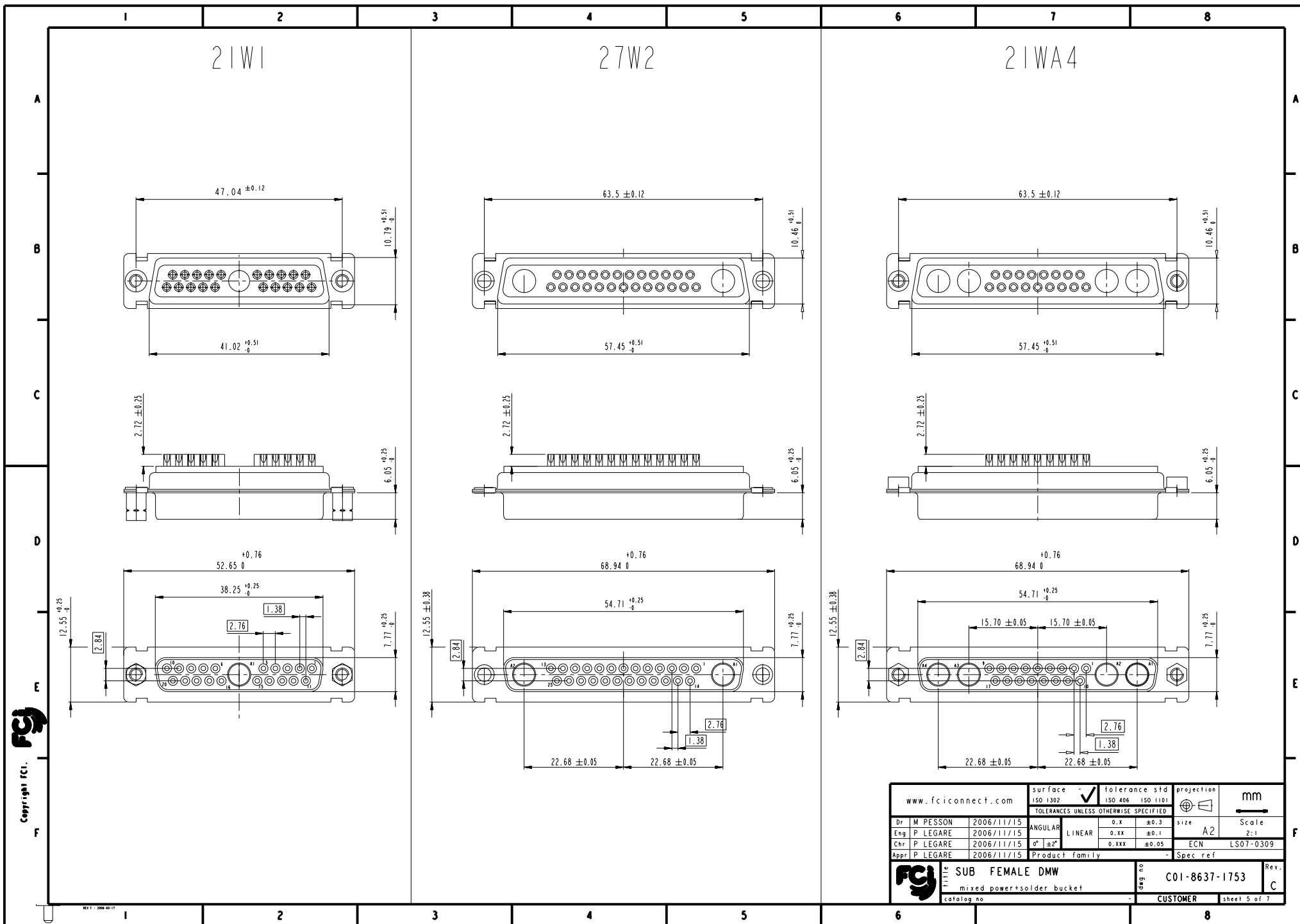


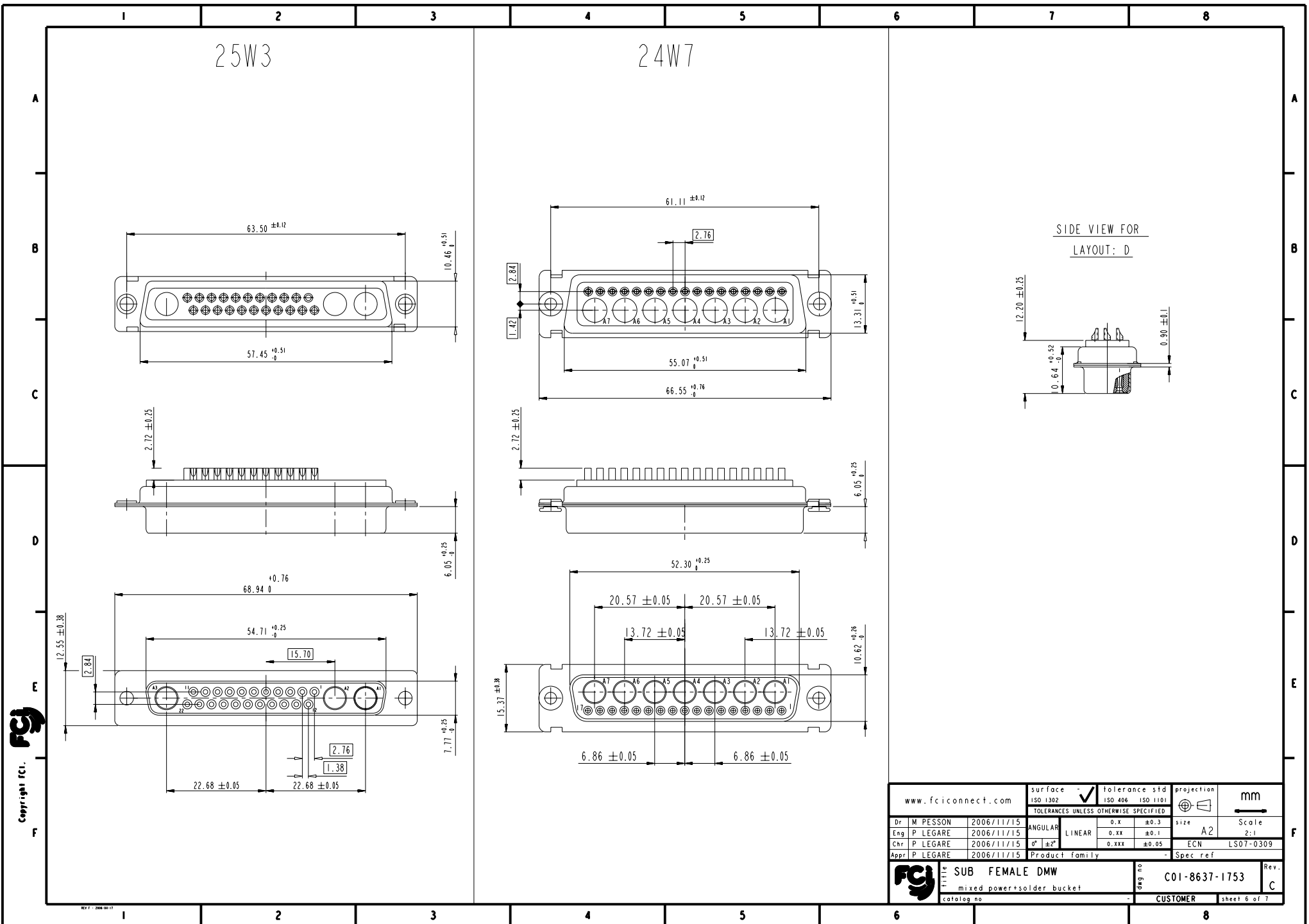


Copyright fci

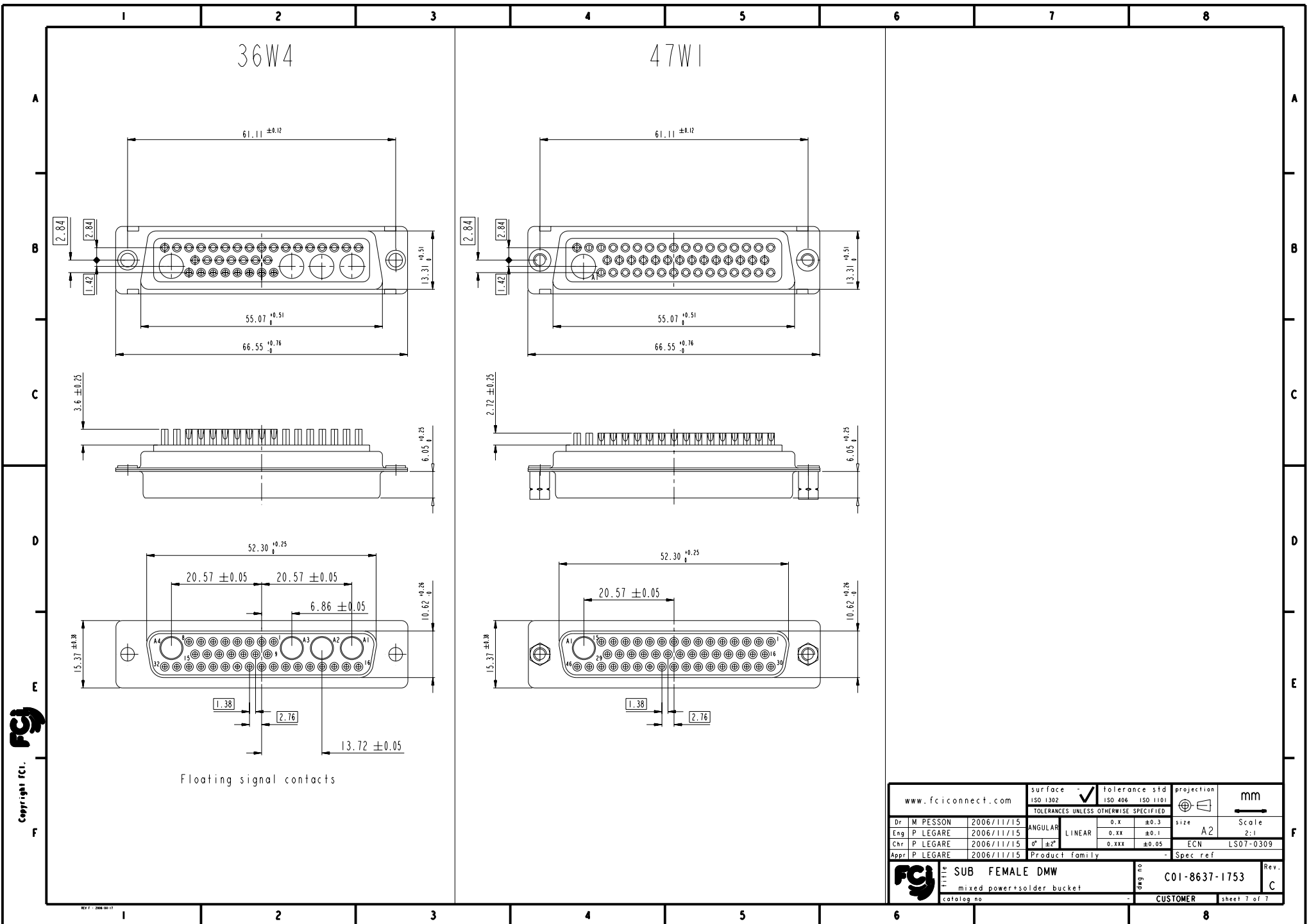
www.fciconnect.com			surface  tolerance std ISO 1302 ISO 406 ISO 1101		projection 		mm 	
TOLERANCES UNLESS OTHERWISE SPECIFIED								
Dr	M PESSON	2006/11/15	ANGULAR		0.X	±0.3	size	Scale
Eng	P LEGARE	2006/11/15	LINEAR		0.XX	±0.1	A2	2:1
Chr	P LEGARE	2006/11/15	0° ±2°		0.XXX	±0.05	ECN	LS07-0309
Appr	P LEGARE	2006/11/15	Product family				- Spec ref	
			SUB FEMALE DMW			C01-8637-1753		Rev.
mixed powersolder bucket			catalog no			CUSTOMER		C
			-			sheet 3 of 7		







www.fciconnect.com		surface -	tolerance std	projection	mm
		ISO 1302	ISO 406 ISO 1101		
		TOLERANCES UNLESS OTHERWISE SPECIFIED			
Dr	M PESSON	2006/11/15	ANGULAR	0.X	±0.3
Eng	P LEGARE	2006/11/15	LINEAR	0.XX	±0.1
Chr	P LEGARE	2006/11/15	0° ±2°	0.XXX	±0.05
Appr	P LEGARE	2006/11/15	Product family	- Spec ref	
SUB FEMALE DMW		mixed power+solder bucket		catlog no	CUSTOMER
C01-8637-1753		Rev. C		sheet 6 of 7	



www.fciconnect.com		surface	-	tolerance std	ISO 1302	ISO 406	ISO 1101	projection	mm
		TOLERANCES UNLESS OTHERWISE SPECIFIED							
Dr	M. PESSON	2006/11/15	ANGULAR	LINEAR	0.X	±0.3	size	A2	Scale
Eng	P. LEGARE	2006/11/15	0.XX	±0.1	0.XXX	±0.05	ECN	LS07-0309	2:1
Chr	P. LEGARE	2006/11/15	0° ±2°						
Appr	P. LEGARE	2006/11/15	Product family	-	Spec. ref				
SUB FEMALE DMW		mixed power+solder bucket		C01-8637-1753		Rev.		C	
catalog no		CUSTOMER		sheet 7 of 7					

Mouser Electronics

Authorized Distributor

Click to View Pricing, Inventory, Delivery & Lifecycle Information:

[FCI / Amphenol:](#)

[DCMF27W2SN](#)