

REFERENCE SPECIFICATIONS

-NFC 93425 (in compliance with HE 501)

PHYSICAL CHARACTERISTICS

-INSULATOR MATERIAL: THERMOPLASTIC UL94V0

-CONTACT MATERIAL: BRASS,
GOLD OVER NICKEL

-ACCESSORIES: STEEL FOR METAL BRACKETS,
cadmium plated yellow passivation
THERMOPLASTIC UL94V0 FOR PLASTIC BRACKETS

BRASS FOR OTHERS ACCESSORIES,
cadmium plated yellow passivation

-SHELLS: STEEL,
cadmium plated yellow passivation

ELECTRICAL CHARACTERISTICS

-NOMINAL CURRENT: 7.5A

-CONTACT RESISTANCE: <=7.3 m Ohms

-CONTACT/CONTACT : >=1000 V

-CONTACT/GROUND : >=1200 V

-INSULATION RESISTANCE: >=5000 MOhms

ENVIRONMENTAL CHARACTERISTICS

- CLIMATIC CATEGORY: 55/125/56

TEMPERATURE RANGE -55°C TO +125°C

DAMP HEAT STEADY STATE 56 DAYS

SALT SPRAY 48 HOURS

MECHANICAL CHARACTERISTICS

RETENTION AGAINST TORQUE: -Threaded insert:0.7 N.m min

-Female screw:0.5 N.m min

Series

DBML25P500M

Shell size: **E A B C D**
(see sheet 3)

Front accessory definition
(see sheet 2)

Blank :without accessory
L :threaded insert M3
O :threaded insert UNC 4-40
V :female screw UNC 4-40

Layout of contacts (see sheet 3)

9,15,25,37,50

Contacts

P :Pin

Termination type

5 Right angle/Europe standard

Plating

00 Right angle 500 matings/unmatings

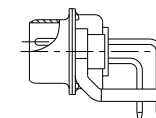
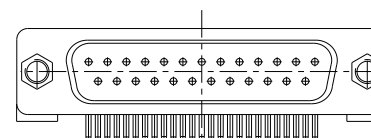
43 Right angle 500 matings/unmatings
for harsh environment

PCB accessories definition(see sheet 2)

Blank :Plastic brackets




C :Without brackets

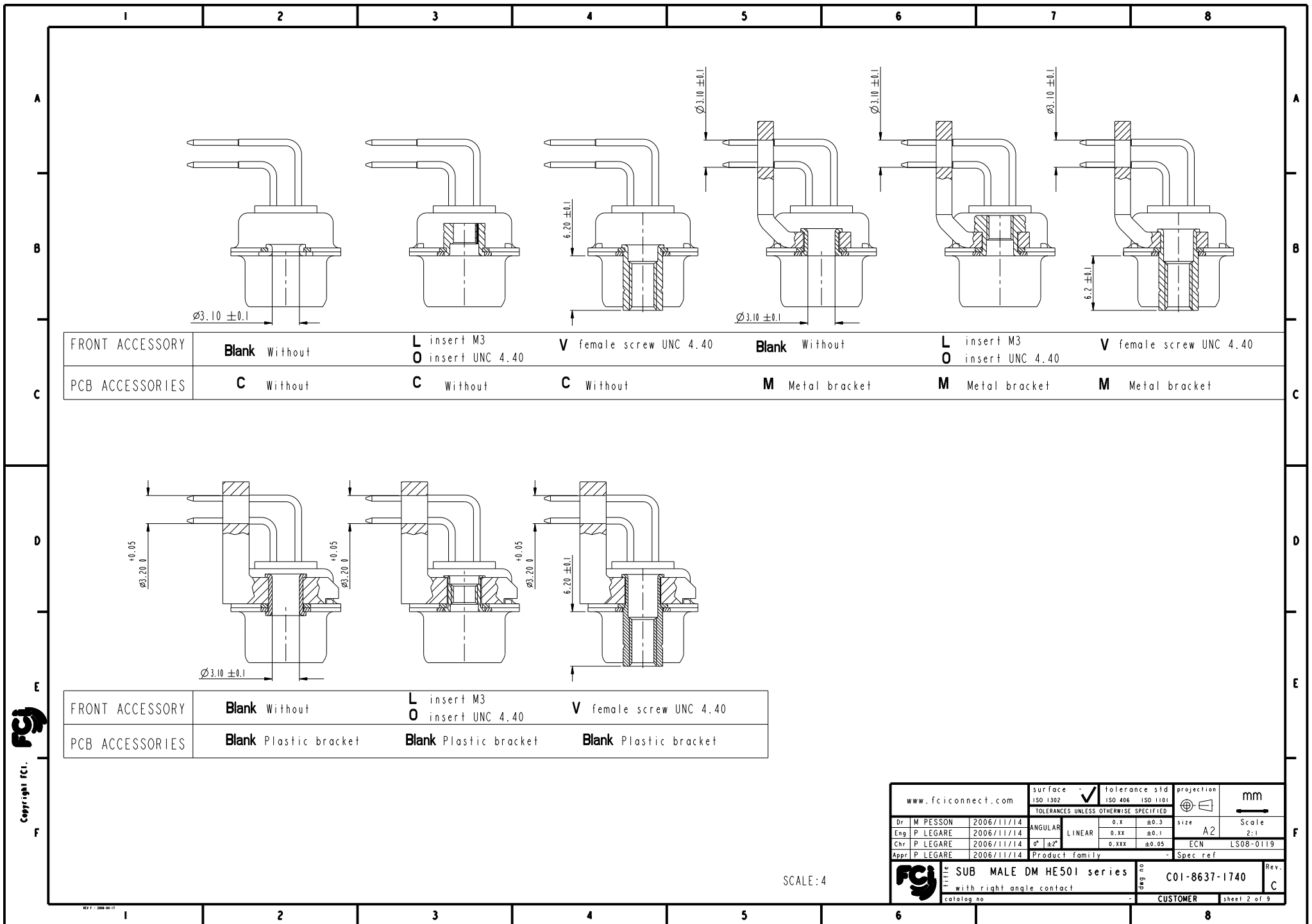
M :Metal brackets



25 WAY for Example

rev	ech no	dr	date
A	3506-0174	MPE	2006/11/14
B	3507-0065	MPE	2007/03/02
C	3508-0119	MPE	2008/04/29
-	-	-	-
-	-	-	-
-	-	-	-

www.fciconnect.com				surface - <input checked="" type="checkbox"/> tolerance std ISO 1302 ISO 406 ISO 1101		projection 		mm 	
TOLERANCES UNLESS OTHERWISE SPECIFIED									
Dr	M PESSON	2006/11/14	ANGULAR		LINEAR	0.X	±0.3	size	A2
Eng	P LEGARE	2006/11/14	0° ±2°			0.XX	±0.1	Scale	2:1
Chr	P LEGARE	2006/11/14	0° ±2°			0.XXX	±0.05	ECN	LS08-0119
Pgr	P LEGARE	2006/11/14	Product family				- Spec ref		
 SUB MALE DM HE501 series									
with right angle contact									
C01-8637-1740									
CUSTOMER									



PART NUMBER	FRONT ACCESSORY	PCB ACCESSORY
D*MxxP500C	without	without
D*MLxxP500C	insert M3	without
D*MOxxP500C	insert UNC 4.40	without
D*MVxxP500C	female screw UNC 4.40	without
D*MxxP500M	without	Metal bracket
D*MLxxP500M	insert M3	Metal bracket
D*MOxxP500M	insert UNC 4.40	Metal bracket
D*MVxxP500M	female screw UNC 4.40	Metal bracket
D*MxxP500	without	Plastic bracket
D*MLxxP500	insert M3	Plastic bracket
D*MOxxP500	insert UNC 4.40	Plastic bracket
D*MVxxP500	female screw UNC 4.40	Plastic bracket

shell size	Contact number
#	XX
E	09
A	15
B	25
C	37
D	50

PART NUMBER	FRONT ACCESSORY	PCB ACCESSORY
D*MxxP543C	without	without
D*MLxxP543C	insert M3	without
D*MOxxP543C	insert UNC 4.40	without
D*MVxxP543C	female screw UNC 4.40	without
D*MxxP543M	without	Metal bracket
D*MLxxP543M	insert M3	Metal bracket
D*MOxxP543M	insert UNC 4.40	Metal bracket
D*MVxxP543M	female screw UNC 4.40	Metal bracket
D*MxxP543	without	Plastic bracket
D*MLxxP543	insert M3	Plastic bracket
D*MOxxP543	insert UNC 4.40	Plastic bracket
D*MVxxP543	female screw UNC 4.40	Plastic bracket

CROSS REFERENCES HE501 and FCI

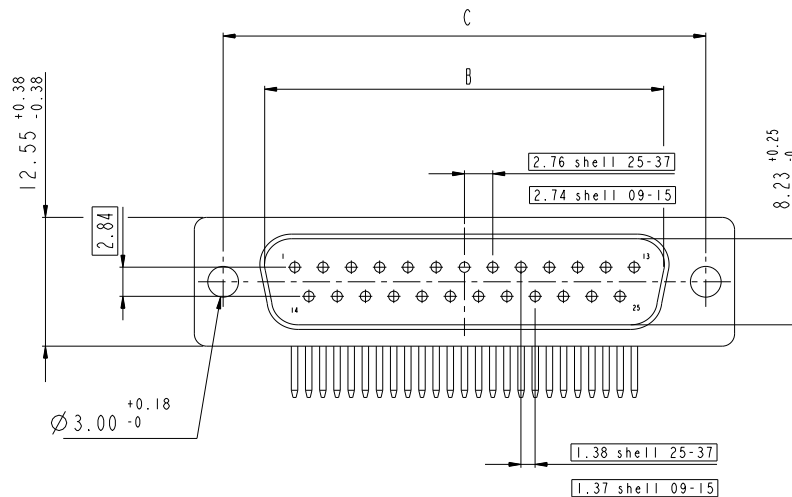
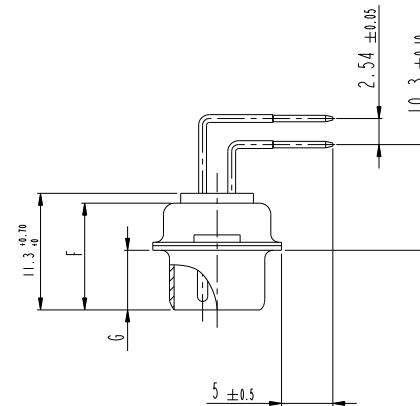
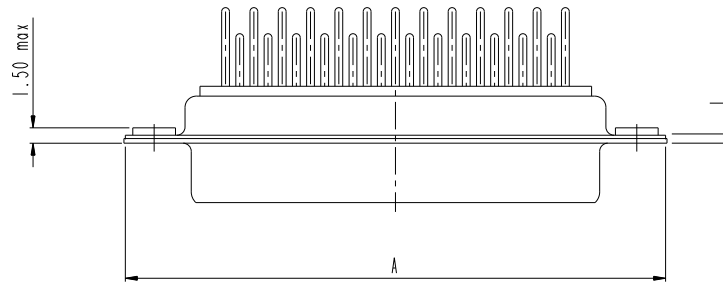
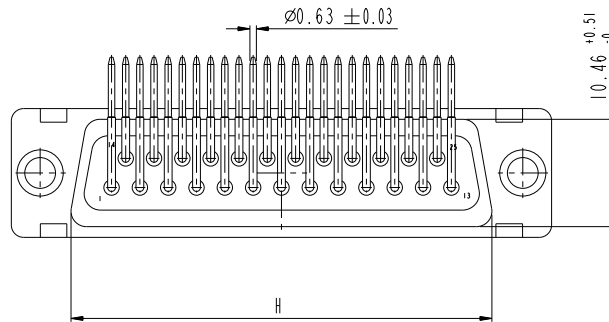
HE501 P/N	FCI P/N	FRONT ACCESSORY	PCB ACCESSORY
HE501PxxVP6	D*MxxP500	without	Plastic bracket
HE501MxxVP6	D*MxxP500M	without	Metal bracket

www.fciconnect.com			surface - <input checked="" type="checkbox"/> tolerance std ISO 1302 ISO 406 ISO 1101		projection 		mm 	
			TOLERANCES UNLESS OTHERWISE SPECIFIED					
Dr	M PESSON	2006/11/14	ANGULAR	LINEAR	0.X ±0.3	size	Scale	
Eng	P LEGARE	2006/11/14			0.1X ±0.1	A2	2:1	
Chr	P LEGARE	2006/11/14	0° ±2°		0.XXX ±0.05	ECN	LS08-0119	
Appr	P LEGARE	2006/11/14	Product family			-	Spec ref	
			SUB MALE DM HE501 series			deg no	Rev.	
			with right angle contact			C01-8637-1740	C	
catalog no			CUSTOMER			sheet 3 of 9		

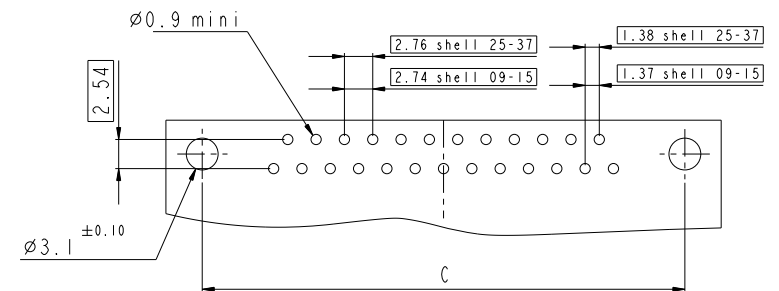
DIMENSION FOR SHELL E,A,B,C WITHOUT BRACKET

Dimensions are in millimeters

Shell size	Number of contacts	A ^{+0.76} ₋₀	B ^{+0.25} ₋₀	C ±0.12	F ^{+0.57} ₋₀	G ^{+0.25} ₋₀	H ^{+0.51} ₋₀	L ^{+0.22} ₋₀
E	09	30.43	16.79	24.99	10.47	5.9 ^{+0.15} ₋₀	19.02	0.80
A	15	38.76	25.12	33.32	10.47	5.9 ^{+0.15} ₋₀	27.25	0.80
B	25	52.65	38.84	47.04	10.43	5.7 ^{+0.25} ₋₀	41.02	0.80
C	37	68.94	55.30	63.50	10.56	5.7 ^{+0.25} ₋₀	57.45	0.90

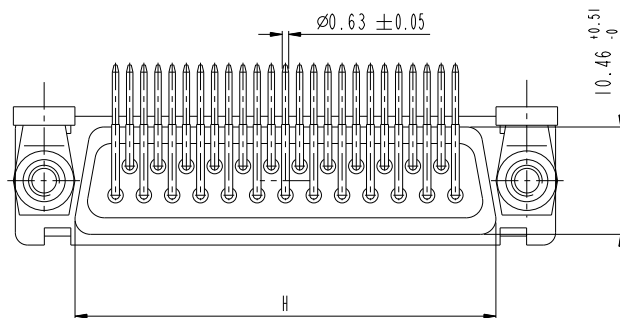


LAYOUT DIMENSIONS



SCALE: 3

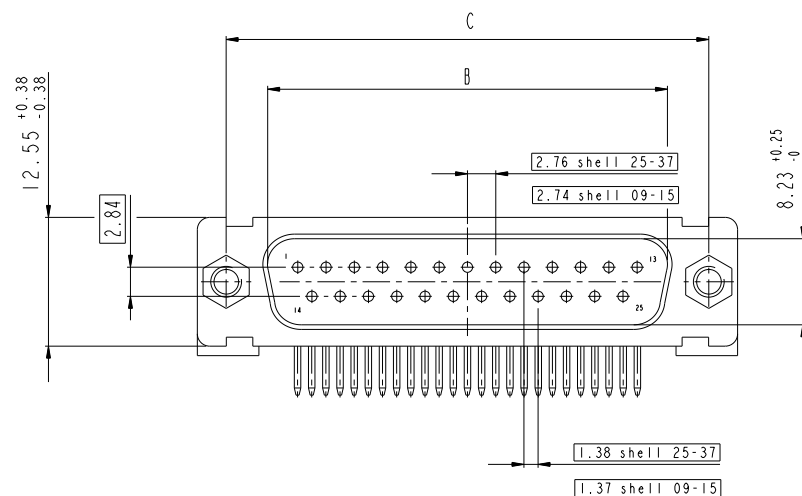
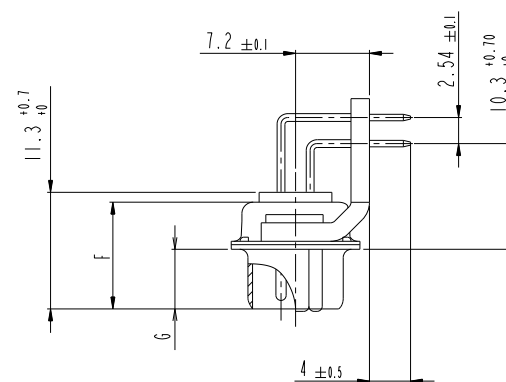
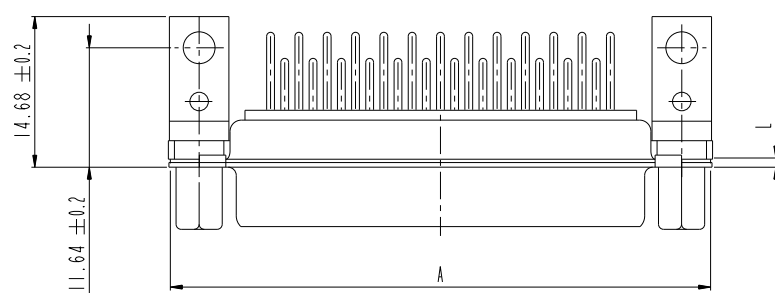
www.fciconnect.com				surface	ISO 1302	tolerance std	ISO 406	ISO 1101	projection	mm
				TOLERANCES UNLESS OTHERWISE SPECIFIED						
Dr	M PESSON	2006/11/14	ANGULAR	0.X	±0.3	size	A2	Scale	2:1	
Eng	P LEGARE	2006/11/14	LINEAR	0.XX	±0.1	ECN	LS08-0119			
Chr	P LEGARE	2006/11/14	0° ± 2°	0.XXX	±0.05					
Appr	P LEGARE	2006/11/14	Product family	Spec ref						
SUB MALE DM HE501 series				C01-8637-1740				Rev.	C	
with right angle contact				CUSTOMER				sheet 4 of 9		



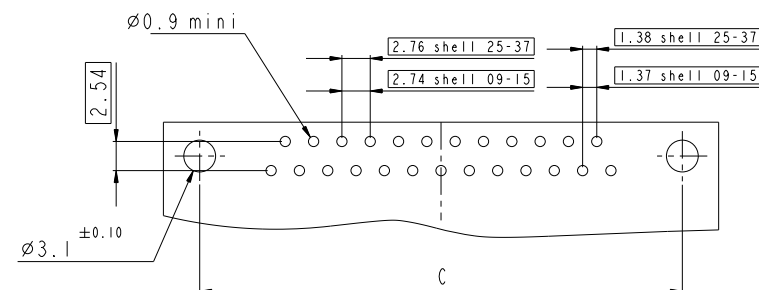
DIMENSION FOR SHELL E,A,B,C WITH METAL BRACKET

Dimensions are in millimeters

Shell size	Number of contacts	A $^{+0.76}_{-0}$	B $^{+0.25}_{-0}$	C ± 0.12	F $^{+0.57}_{-0}$	G $^{+0.25}_{-0}$	H $^{+0.51}_{-0}$	L $^{+0.22}_{-0}$
E	09	30.43	16.79	24.99	10.47	5.9 $^{+0.15}_{-0}$	19.02	0.80
A	15	38.76	25.12	33.32	10.47	5.9 $^{+0.15}_{-0}$	27.25	0.80
B	25	52.65	38.84	47.04	10.43	5.7 $^{+0.25}_{-0}$	41.02	0.80
C	37	68.94	55.30	63.50	10.56	5.7 $^{+0.25}_{-0}$	57.45	0.90



LAYOUT DIMENSIONS

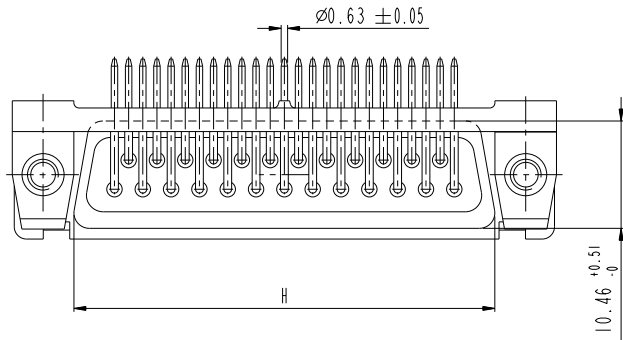


SCALE: 3

www.fciconnect.com		surface -	tolerance std	projection	mm
		ISO 1302	ISO 406 ISO 1101		
		TOLERANCES UNLESS OTHERWISE SPECIFIED			
Dr M PESSON	2006/11/14	ANGULAR	0.X ± 0.3	size	Scale
Eng P LEGARE	2006/11/14	LINEAR	0.XX ± 0.1	A2	2:1
Chr P LEGARE	2006/11/14	$\alpha^\circ \pm \alpha^\circ$	0.XXX ± 0.05	ECN	LS08-0119
Appr P LEGARE	2006/11/14	Product family	Spec ref		
SUB MALE DM HE501 series		Part no	C01-8637-1740		
with right angle contact		Rev.	C		
catalog no		CUSTOMER		sheet 5 of 9	

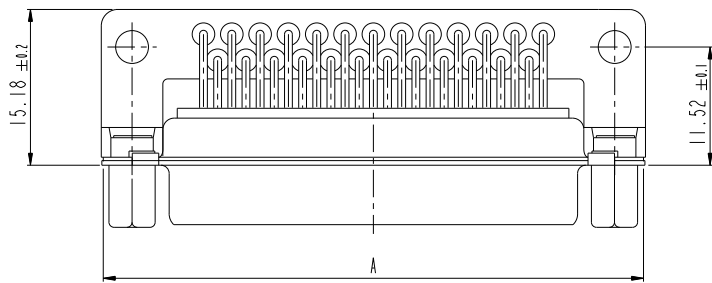
I 2 3 4 5 6 7 8

A

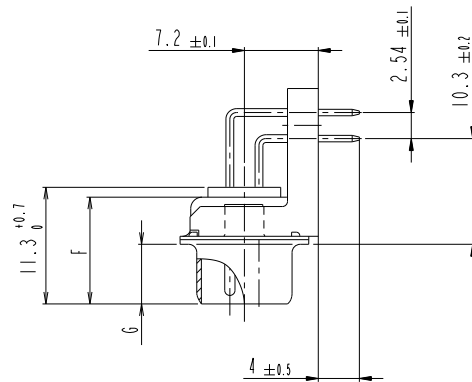


B

C



D



A

B

C

D

DIMENSION FOR SHELL E,A,B,C WITH PLASTIC BRACKET

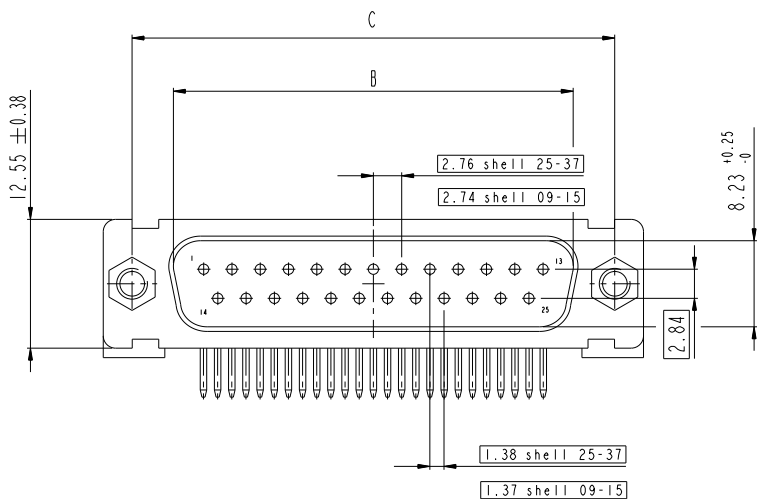
Dimensions are in millimeters

Shell size	Number of contacts	A ^{+0.76} ₋₀	B ^{+0.25} ₋₀	C ±0.12	F ^{+0.57} ₋₀	G ^{+0.25} ₋₀	H ^{+0.51} ₋₀	L ^{+0.22} ₋₀
E	09	30.43	16.79	24.99	10.47	5.9 ^{+0.15} ₋₀	19.02	0.80
A	15	38.76	25.12	33.32	10.47	5.9 ^{+0.15} ₋₀	27.25	0.80
B	25	52.65	38.84	47.04	10.43	5.7 ^{+0.25} ₋₀	41.02	0.80
C	37	68.94	55.30	63.50	10.56	5.7 ^{+0.25} ₋₀	57.45	0.90

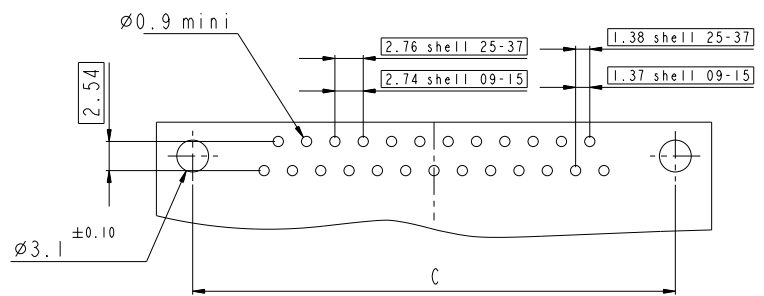


Copyright fci.

F






LAYOUT DIMENSIONS



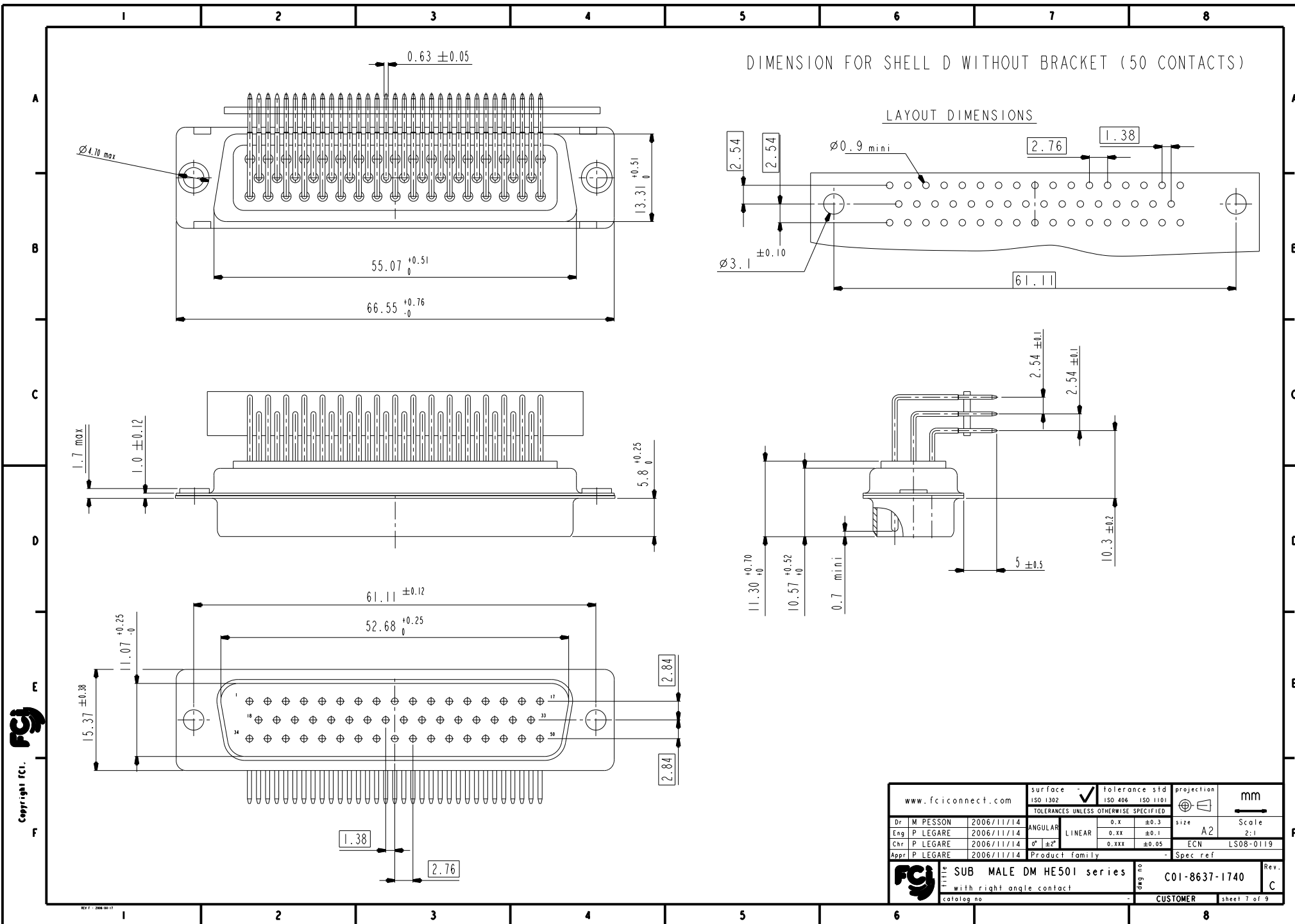
E

F

www.fciconnect.com				surface  tolerance std		ISO 1302		ISO 406		ISO 1101		projection 		mm			
				TOLERANCES UNLESS OTHERWISE SPECIFIED													
Dr	M PESSON	2006/11/14	ANGULAR		LINEAR		0.X		±0.3		size		A2		Scale		
Eng	P LEGARE	2006/11/14					0.XX		±0.1						2:1		
Chr	P LEGARE	2006/11/14	0° ±2°				0.XXX		±0.05				ECN		LS08-0119		
Appr	P LEGARE	2006/11/14	Product family								- Spec ref						
				SUB MALE DM HE501 series								C01-8637-1740				Rev. C	
				with right angle contact													
catalog no								CUSTOMER				sheet 6 of 9					

REV 7 - 2006-09-17

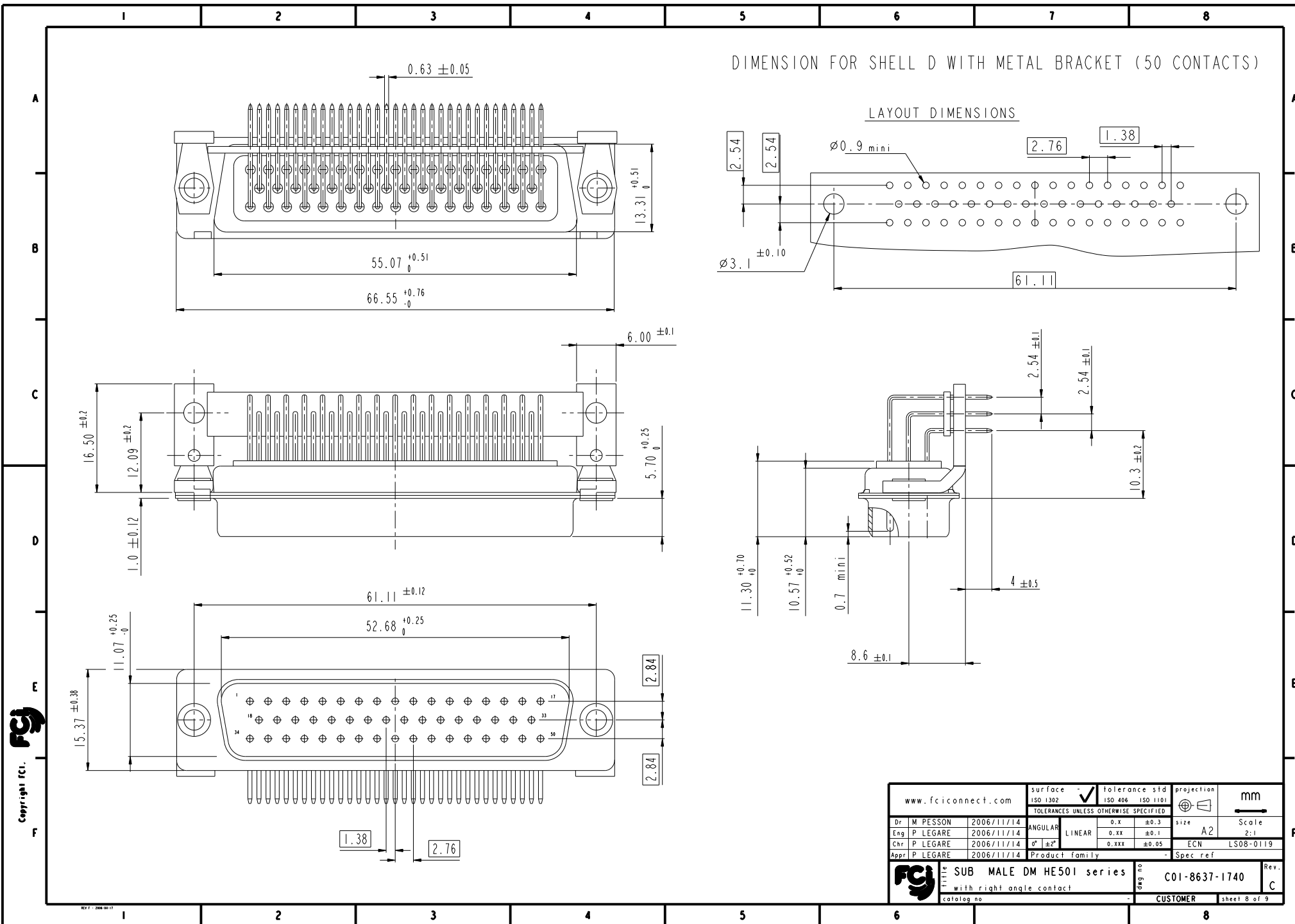
I 2 3 4 5 6 7 8

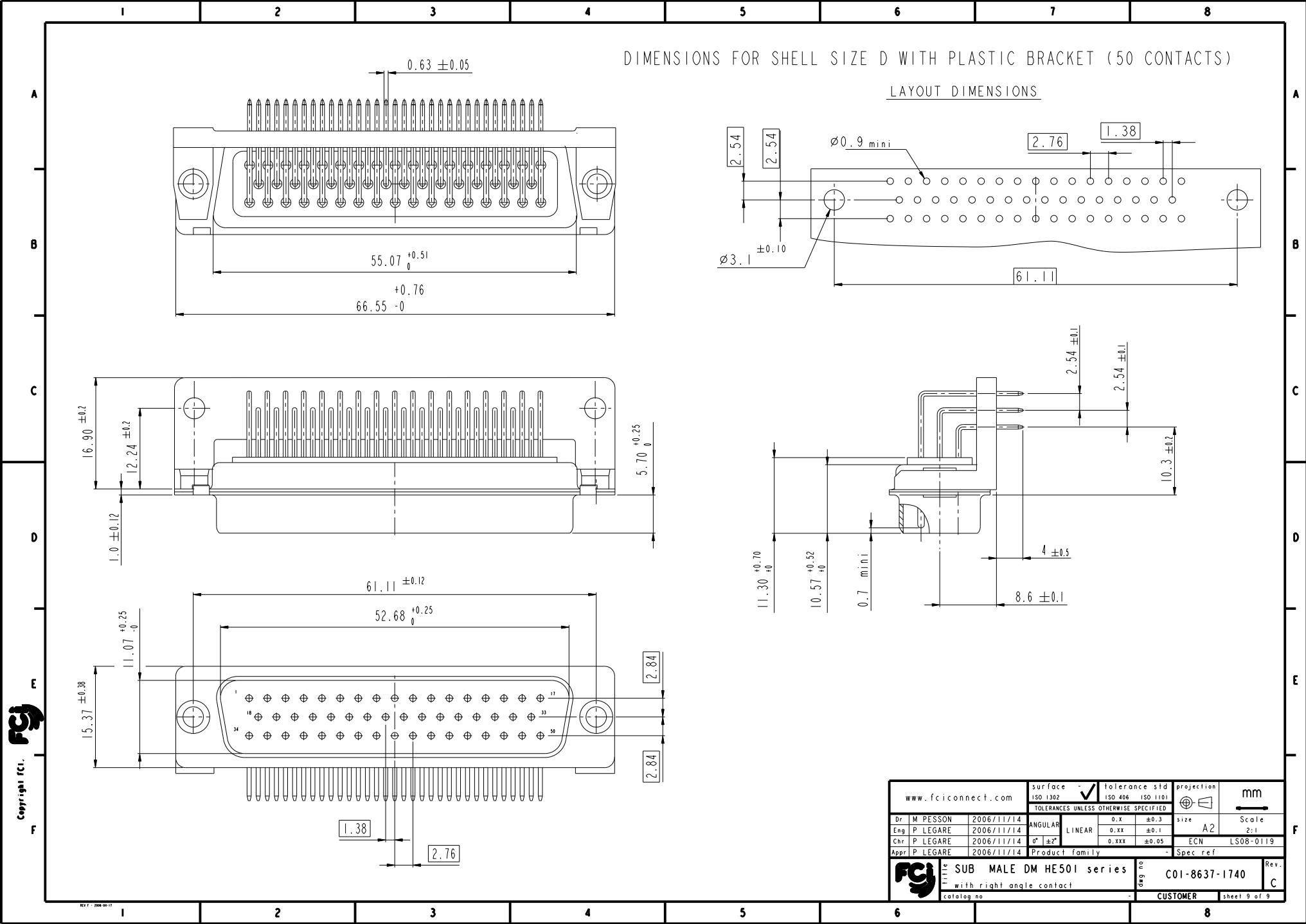





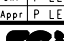
DIMENSION FOR SHELL D WITHOUT BRACKET (50 CONTACTS)

LAYOUT DIMENSIONS

www.fciconnect.com			surface <input checked="" type="checkbox"/> tolerance std ISO 1302 ISO 406 ISO 1101			projection 		mm 		
			TOLERANCES UNLESS OTHERWISE SPECIFIED							
Dr	M PESSON	2006/11/14	ANGULAR	LINEAR	0.X	±0.3	size A2	Scale 2:1		
Eng	P LEGARE	2006/11/14			0.XX	±0.1				
Chr	P LEGARE	2006/11/14	0° ±2°		0.XXX	±0.05	ECN LS08-0119			
Appr	P LEGARE	2006/11/14	Product family						-	Spec ref
			SUB MALE DM HE501 series				C01-8637-1740		Rev	
			with right angle contact						C	
catalog no							CUSTOMER		sheet 7 of 9	





www.fciconnect.com			surface -  tolerance std ISO 1302 ISO 406 ISO 1101			projection 		mm 	
TOLERANCES UNLESS OTHERWISE SPECIFIED									
Dr	M PESSON	2006/11/14	ANGULAR	LINEAR	0.X	±0.3	size A2	Scale 2:1	ECN LS08-0119
Eng	P LEGARE	2006/11/14			0.XX	±0.1			
Chr	P LEGARE	2006/11/14	0° ±2°		0.XXX	±0.05			
Appr	P LEGARE	2006/11/14	Product family				- Spec ref		
			SUB MALE DM HE501 series				C01-8637-1740		Rev. C
			with right angle contact						
catalog no			-				CUSTOMER		sheet 9 of 9

Mouser Electronics

Authorized Distributor

Click to View Pricing, Inventory, Delivery & Lifecycle Information:

[FCI / Amphenol:](#)

[DEM09P500C](#) [DEML09P500M](#) [DEM09P500](#) [DEM09P543](#) [DEMO09P500M](#)