

REFERENCE SPECIFICATIONS

-NFC 93425 (in compliance with HE 501)

PHYSICAL CHARACTERISTICS

-INSULATOR MATERIAL: THERMOPLASTIC UL94V0

-CONTACT MATERIAL: BRASS
GOLD OVER NICKEL

-ACCESSORIES: BRASS,cadmium plated yellow passivation

-SHELLS: STEEL,cadmium plated yellow passivation

ELECTRICAL CHARACTERISTICS

-NOMINAL CURRENT: 7.5A

-CONTACT RESISTANCE: <= 7.3 m ohms

-CONTACT/CONTACT : >=1000 V

-CONTACT/GROUND : >=1200 V

-INSULATION RESISTANCE: >=5000 MOhms

ENVIRONMENTAL CHARACTERISTICS

- CLIMATIC CATEGORY: 55/125/56

TEMPERATURE RANGE -55°C TO +125°C

DAMP HEAT STEADY STATE 56 DAYS

SALT SPRAY 48 HOURS

MECHANICAL CHARACTERISTICS

- RETENTION AGAINST TORQUE: - Threaded insert: 0.7 N.m minimum

- Female screw : 0.5 N.m minimum

Series

DBML25P300

Shell size: **E A B C D**
see sheet 2

Front accessory definition
see sheet 2

Blank :without accessory

F :floating mounting

L :threaded insert M3

O :threaded insert UNC 4-40

V :female screw UNC 4-40

S :spacer

Contact number (see sheet 2)

9,15,25,37,50

Contacts

P :Pin

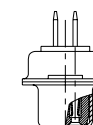
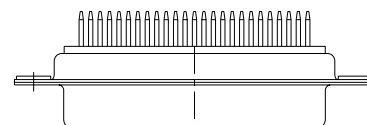
Termination type

3 :Straight version

Plating




00 : 500 matings/unmatings

43 : 500 matings/unmatings for harsh environment



25 WAY for Example

rev	ecn no	dr	date
A	LS06-0174	MPE	2006/11/14
B	LS07-0273	MPE	2007/10/30
-	-	-	-
-	-	-	-
-	-	-	-
-	-	-	-

www.fciconnect.com			surface <input checked="" type="checkbox"/> tolerance std ISO 1302 ISO 406 ISO 1101			projection 		mm 					
TOLERANCES UNLESS OTHERWISE SPECIFIED													
Dr	P MESSON		2006/11/14		ANGULAR	LINEAR	0.X	±0.3	size	A2	Scale	2:1	
Eng	P. LEARE		2006/11/14				0.XX	±0.1	ECN LS07-0273				
Chr	P. LEARE		2006/11/14				0°. ±2°	0.XXX					±0.05
Appr	P. LEARE		2006/11/14				Product family						- Spec ref
		SUB MALE DM HE501 series					deg no		C01-8637-1738		Rev. B		
		with straight solder contact							CUSTOMER		sheet 1 of 4		
		catalog no											



Copyright FCI.

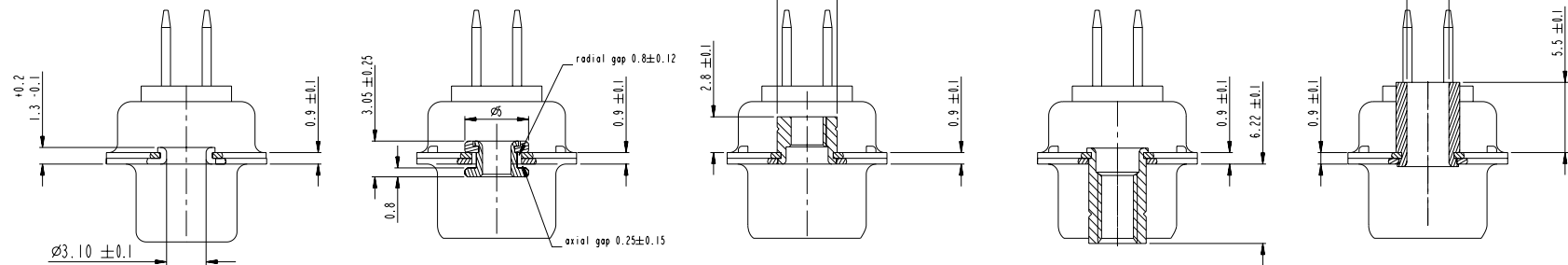
1 2 3 4 5 6 7 8

A

B

A

B



FRONT ACCESSORY	Blank without	F floating mounting	L insert M3 O insert UNC 4.40	V female screw UNC 4.40	S spacer
-----------------	---------------	---------------------	----------------------------------	-------------------------	----------

C

C

PART NUMBER	FRONT ACCESSORY
D*MxxP300	without
D*MFxxP300	floating mounting
D*MLxxP300	insert M3
D*MOxxP300	insert UNC 4.40
D*MVxxP300	female screw UNC 4.40
D*MSxxP300	spacer

shell size Contact number

#	XX
E	09
A	15
B	25
C	37
D	50

D

D

PART NUMBER	FRONT ACCESSORY
D*MxxP343	without
D*MFxxP343	floating mounting
D*MLxxP343	insert M3
D*MOxxP343	insert UNC 4.40
D*MVxxP343	female screw UNC 4.40
D*MSxxP343	spacer

E

E

CROSS REFERENCES HE501 and FC1

HE501 P/N	FC1 P/N	FRONT ACCESSORY
HE501NxxYP4	D*MxxP300	without
HE501FxxYP4	D*MFxxP300	floating mounting

F

F

SCALE: 4

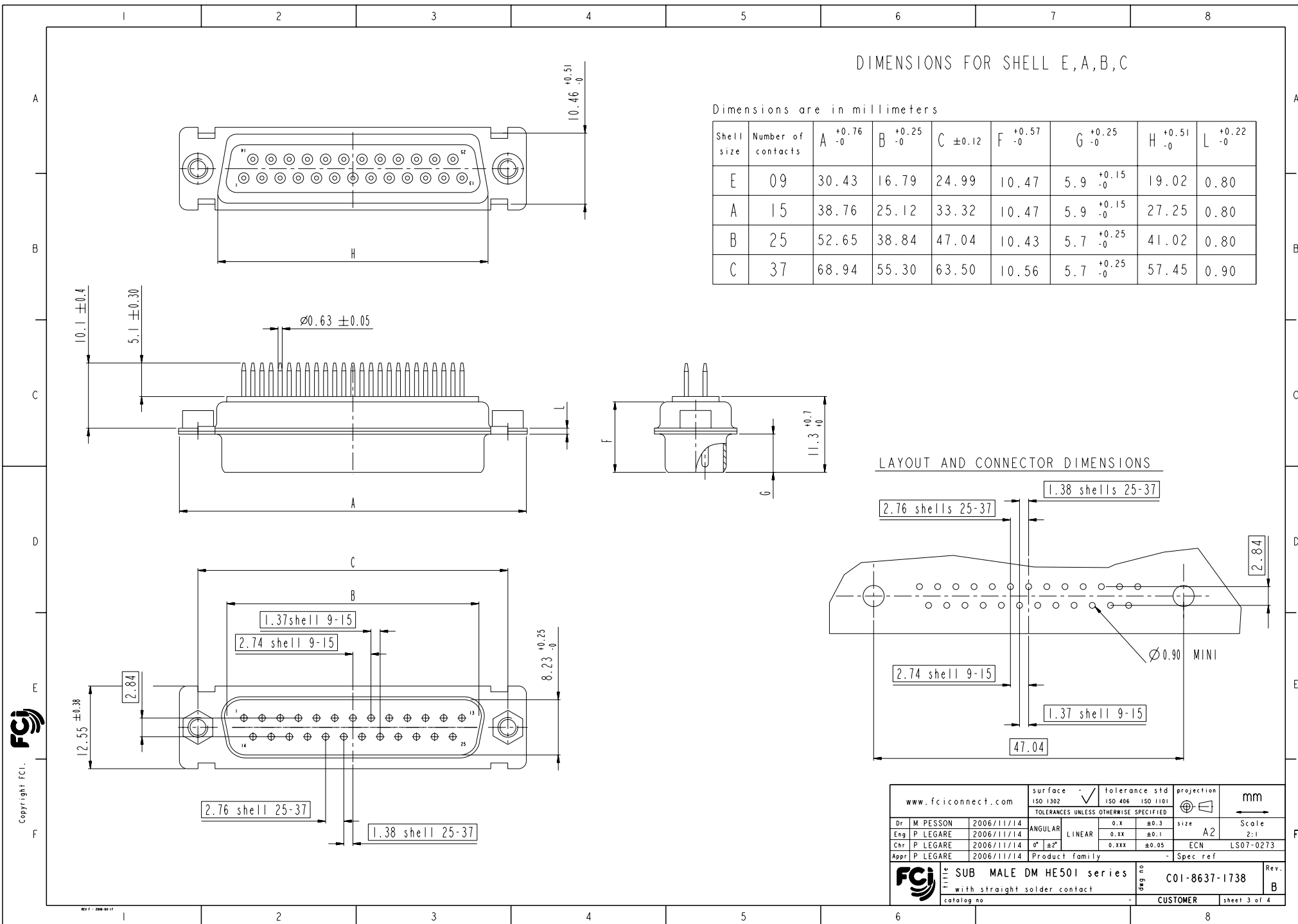
www.fciconnect.com		surface - ISO 1302	tolerance std ISO 406 ISO 1101	projection size A2	mm Scale 2:1
		TOLERANCES UNLESS OTHERWISE SPECIFIED			
Dr	M PESSON	2006/11/14	ANGULAR	0.X ±0.3	
Eng	P LEGARE	2006/11/14	LINEAR	0.XX ±0.1	
Chr	P LEGARE	2006/11/14	0° ±2°	0.XXX ±0.05	ECN LS07-0273
Appr	P LEGARE	2006/11/14	Product family	Spec ref	
FCI		SUB MALE DM HE501 series with straight solder contact		cat no C01-8637-1738	Rev. B
				CUSTOMER	sheet 2 of 4

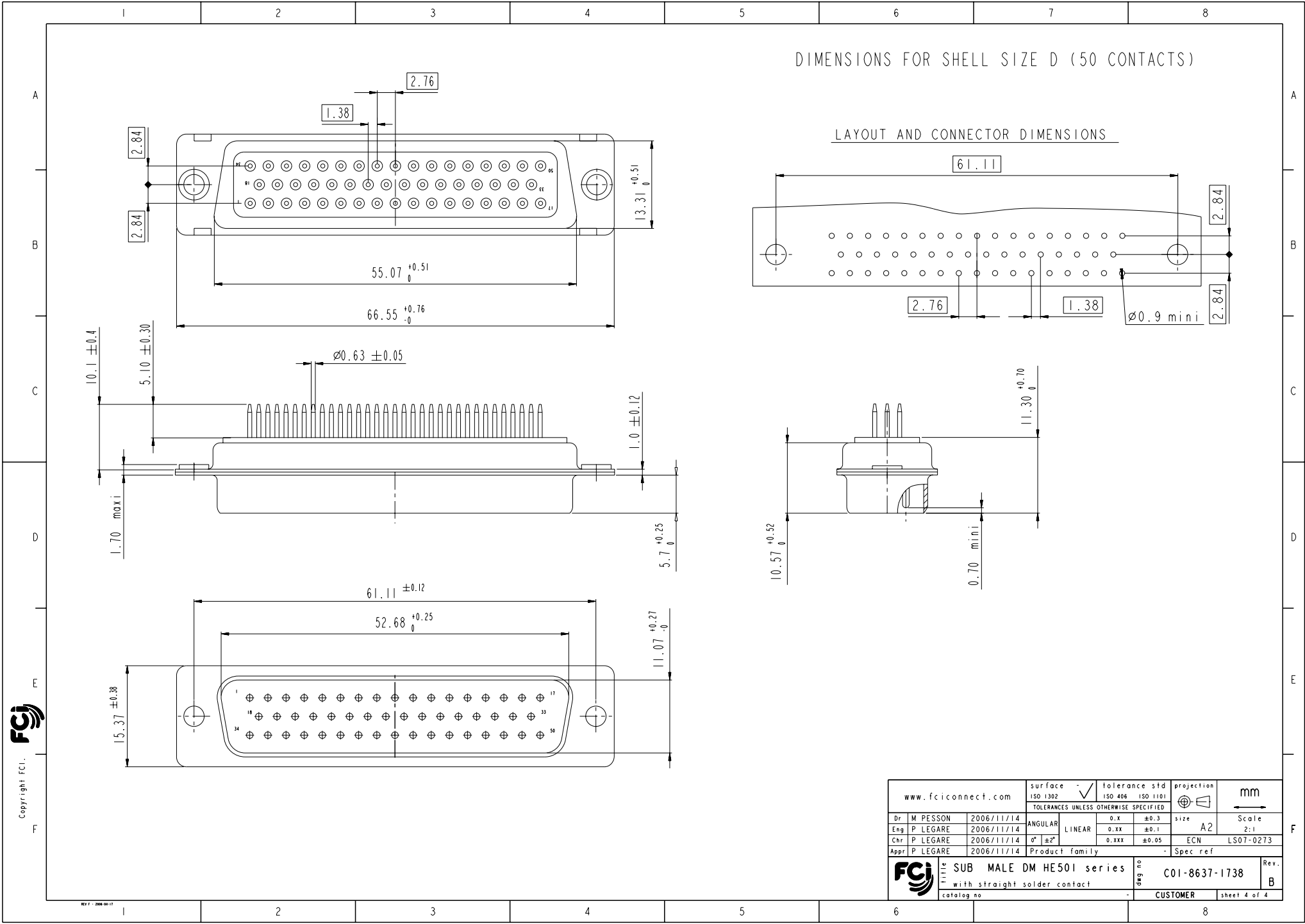


Copyright FCI.




REV 7 - 2006-04-17

1 2 3 4 5 6 7 8





Copyright FCI.

www.fciconnect.com			surface - <input checked="" type="checkbox"/> ISO 1302		tolerance std ISO 406 ISO 1101		projection 		mm			
			TOLERANCES UNLESS OTHERWISE SPECIFIED									
Dr	M PESSON	2006/11/14	ANGULAR	LINEAR	0.X		±0.3				size	A2
Eng	P LEGARE	2006/11/14			0.XX		±0.1					
Chr	P LEGARE	2006/11/14			0° ±2°		0.XXX					
Appr	P LEGARE	2006/11/14	Product family					- Spec ref				
			SUB MALE DM HE501 series					C01-8637-1738		Rev. B		
Title			with straight solder contact									
catalog no			-					CUSTOMER		sheet 4 of 4		

Mouser Electronics

Authorized Distributor

Click to View Pricing, Inventory, Delivery & Lifecycle Information:

[FCI / Amphenol:](#)

[DDMF50P300](#)