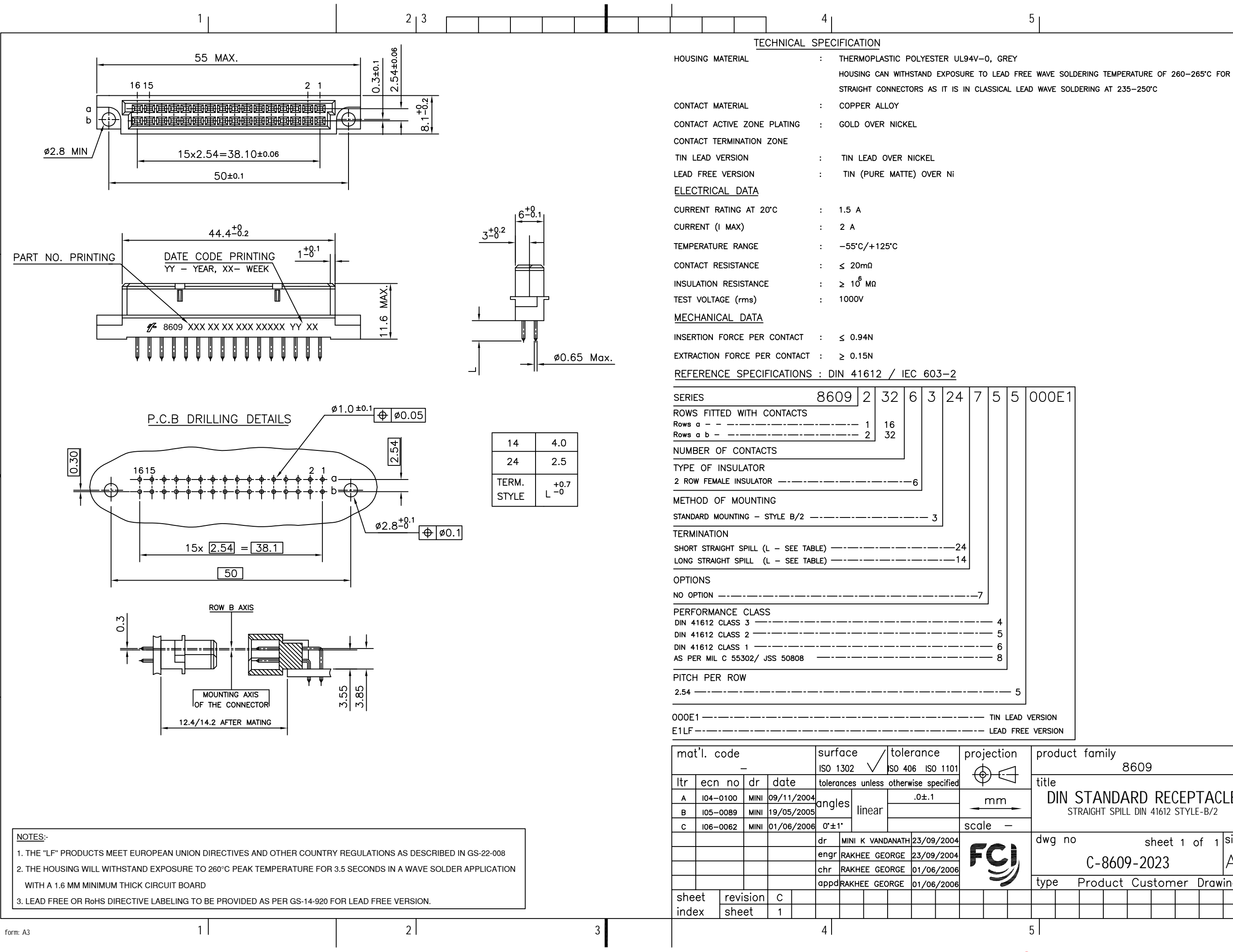




FCIconnect.com

Copyright FCI



TECHNICAL SPECIFICATION

HOUSING MATERIAL : THERMOPLASTIC POLYESTER UL94V-0, GREY
HOUSING CAN WITHSTAND EXPOSURE TO LEAD FREE WAVE SOLDERING TEMPERATURE OF 260-265°C FOR STRAIGHT CONNECTORS AS IT IS IN CLASSICAL LEAD WAVE SOLDERING AT 235-250°C

CONTACT MATERIAL : COPPER ALLOY

CONTACT ACTIVE ZONE PLATING : GOLD OVER NICKEL

CONTACT TERMINATION ZONE

TIN LEAD VERSION : TIN LEAD OVER NICKEL

LEAD FREE VERSION : TIN (PURE MATTE) OVER NI

ELECTRICAL DATA

CURRENT RATING AT 20°C : 1.5 A

CURRENT (I MAX) : 2 A

TEMPERATURE RANGE : -55°C/+125°C

CONTACT RESISTANCE : ≤ 20mΩ

INSULATION RESISTANCE : ≥ 10⁶ MΩ

TEST VOLTAGE (rms) : 1000V

MECHANICAL DATA

INSERTION FORCE PER CONTACT : ≤ 0.94N

EXTRACTION FORCE PER CONTACT : ≥ 0.15N

REFERENCE SPECIFICATIONS : DIN 41612 / IEC 603-2

SERIES	8609	2	32	6	3	24	7	5	5	000E1
ROWS FITTED WITH CONTACTS										
Rows a - - - - -		1	16							
Rows a b - - - - -		2	32							
NUMBER OF CONTACTS										
TYPE OF INSULATOR										
2 ROW FEMALE INSULATOR - - - - -				6						
METHOD OF MOUNTING										
STANDARD MOUNTING - STYLE B/2 - - - - -					3					
TERMINATION										
SHORT STRAIGHT SPILL (L - SEE TABLE) - - - - -						24				
LONG STRAIGHT SPILL (L - SEE TABLE) - - - - -						14				
OPTIONS										
NO OPTION - - - - -							7			
PERFORMANCE CLASS										
DIN 41612 CLASS 3 - - - - -								4		
DIN 41612 CLASS 2 - - - - -								5		
DIN 41612 CLASS 1 - - - - -								6		
AS PER MIL C 55302/ JSS 50808 - - - - -								8		
PITCH PER ROW										
2.54 - - - - -								5		
000E1 - - - - -										TIN LEAD VERSION
E1LF - - - - -										LEAD FREE VERSION

NOTES:-

1. THE "LF" PRODUCTS MEET EUROPEAN UNION DIRECTIVES AND OTHER COUNTRY REGULATIONS AS DESCRIBED IN GS-22-008

2. THE HOUSING WILL WITHSTAND EXPOSURE TO 260°C PEAK TEMPERATURE FOR 3.5 SECONDS IN A WAVE SOLDER APPLICATION WITH A 1.6 MM MINIMUM THICK CIRCUIT BOARD

3. LEAD FREE OR RoHS DIRECTIVE LABELING TO BE PROVIDED AS PER GS-14-920 FOR LEAD FREE VERSION.

mat'l. code	surface	tolerance	projection	product family
-	ISO 1302 ✓	ISO 406 ISO 1101		8609
ltr	ecn no	dr	date	title
A	I04-0100	MINI	09/11/2004	DIN STANDARD RECEPTACLE
B	I05-0089	MINI	19/05/2005	STRAIGHT SPILL DIN 41612 STYLE-B/2
C	I06-0062	MINI	01/06/2006	
	dr	MINI K VANDANATH	23/09/2004	dwg no
	engr	RAKHEE GEORGE	23/09/2004	sheet 1 of 1
	chr	RAKHEE GEORGE	01/06/2006	size
	appd	RAKHEE GEORGE	01/06/2006	A3
sheet index	revision	C		type
	sheet	1		Product Customer Drawing

Mouser Electronics

Authorized Distributor

Click to View Pricing, Inventory, Delivery & Lifecycle Information:

[FCI / Amphenol:](#)

[86092326324755E1LF](#)