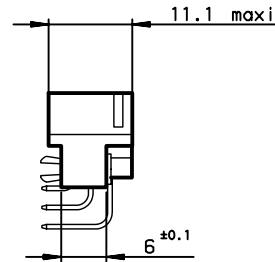
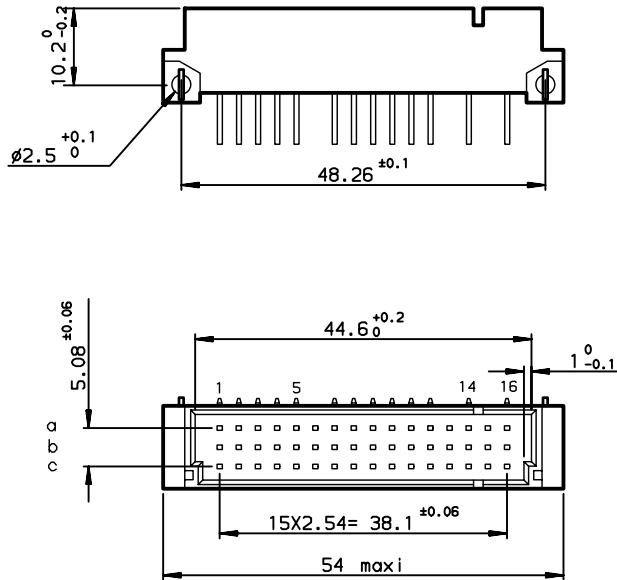
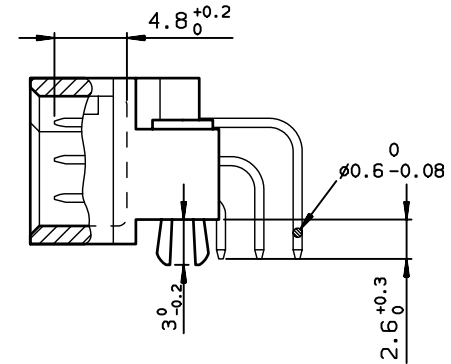


# DIMENSIONS



# TERMINATION



TIN LEAD PART NUMBER

PART NUMBER

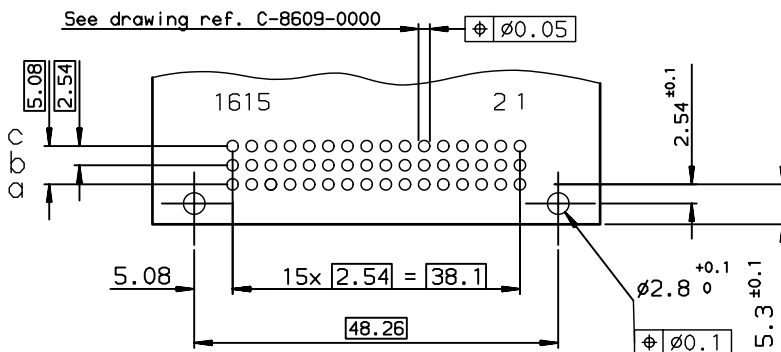
86093397313H50867E1

LEAD FREE PART NUMBER

PART NUMBER

86093397313H50BYLF

P.C. CARD DRILLING (Component side view)



SPECIFICATION 867 = no contacts in position ;  
OR SPECIFICATION BY = row : a-b-c cavity : 6-13-15

GENERAL CHARACTERISTICS AND ROHS INFORMATIONS:  
SEE DRAWING C-8609-0000A

European Views

www.fciconnect.com		surface ISO 1302 ✓	tolerance std ISO 406 ISO 1101	projection mm
		TOLERANCES UNLESS OTHERWISE SPECIFIED		
Dr	ROUILLARD	2001/11/16	ANGULAR	0.X ±0.1
Eng	TARON	2001/11/16	LINEAR	0.XX ±0.1
Chr	LEGARE	2001/11/16	0.XX ±2°	0.XXX ±0.1
Appr	LEGARE	2001/11/16	Product family	DIN 8609
		size		A3
		Scale		1.5
		ECN		LS08-0036
		Spec ref		-
title		STANDARD MALE 3 ROW C/2		Rev.
39 CONTACTS		C-8609-1106		E
catalog no		CUSTOMER		sheet 1 of 1

rev	ecn no	dr	date
A	-	ROU	2001/11/20
B	LS05-001	JTA	2005/03/01
C	LS05-0101	LGO	2006/06/28
D	LS06-0095	LGO	2006/06/28
E	LS08-0036	HLE	2008/01/31
-	-	-	-
-	-	-	-

REV F - 2006-04-17

# Mouser Electronics

Authorized Distributor

Click to View Pricing, Inventory, Delivery & Lifecycle Information:

[FCI / Amphenol:](#)  
[86093397313H50BYLF](#)