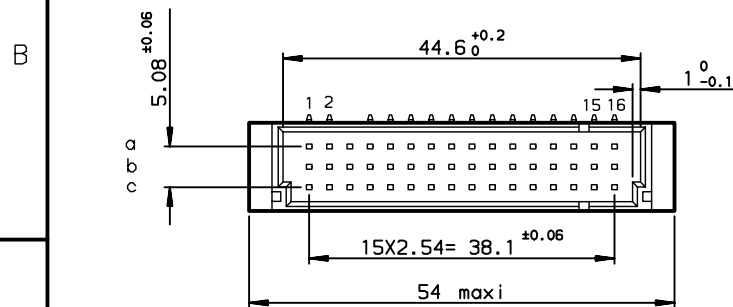
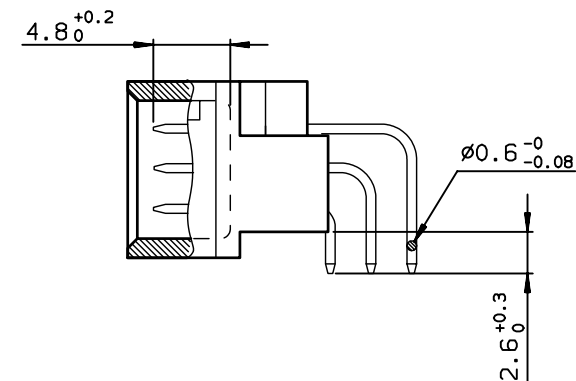
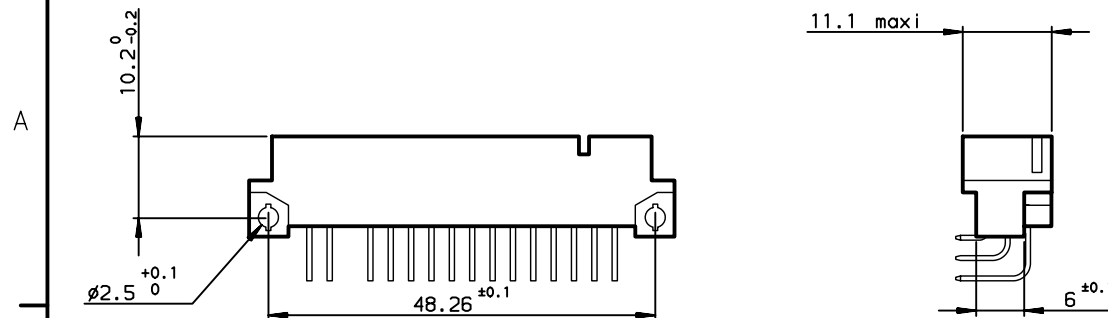


DIMENSIONS

TERMINATION



TIN LEAD PART NUMBER

PART NUMBER

86093457313750862E1

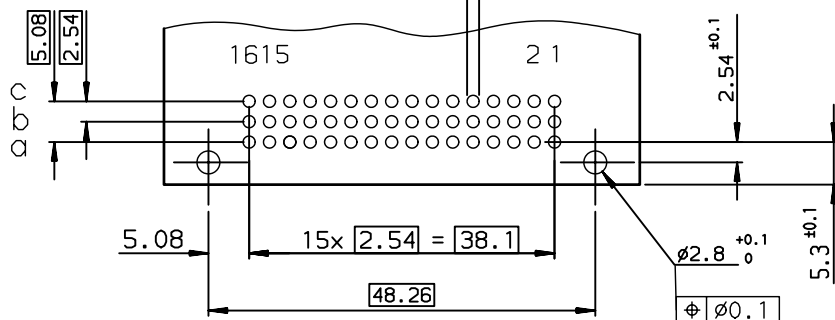
LEAD FREE PART NUMBER

PART NUMBER

86093457313750CSLF

P.C. CARD DRILLING (Component side view)

See drawing ref. C-8609-0000



SPECIFICATION 862 or CS = No contact in position : a3-b3-c3

GENERAL CHARACTERISTICS AND ROHS INFORMATIONS:

SEE DRAWING C-8609-0000A

European Views

www.fciconnect.com		surface ISO 1302	tolerance std ISO 406 ISO 1101	projection	mm
		TOLERANCES UNLESS OTHERWISE SPECIFIED			
Dr	ROUILLARD	2001/10/19	0.X	±0.1	size
Eng	ROUILLARD	2001/10/19	0.XX	±0.1	A3
Chr	LEGARE	2001/10/19	0.XX' ±2"	0.XXX	±0.1
Appr	LEGARE	2001/10/19	Product family		ECN LS06-0132
				DIN	Spec ref -
FCI		STANDARD MALE 3 ROW		dwg no	Rev.
		45 CONTACTS		C-8609-1103	B
catalog no				CUSTOMER	sheet 1 of 1

Mouser Electronics

Authorized Distributor

Click to View Pricing, Inventory, Delivery & Lifecycle Information:

[FCI / Amphenol:](#)

[86093457313750CSLF](#)