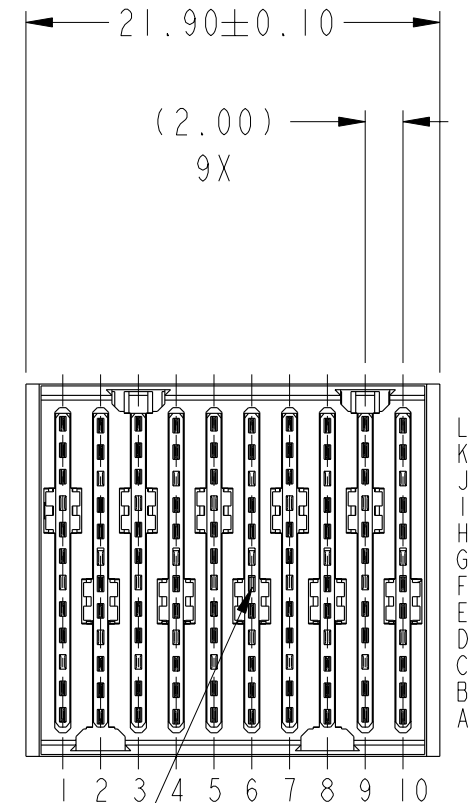
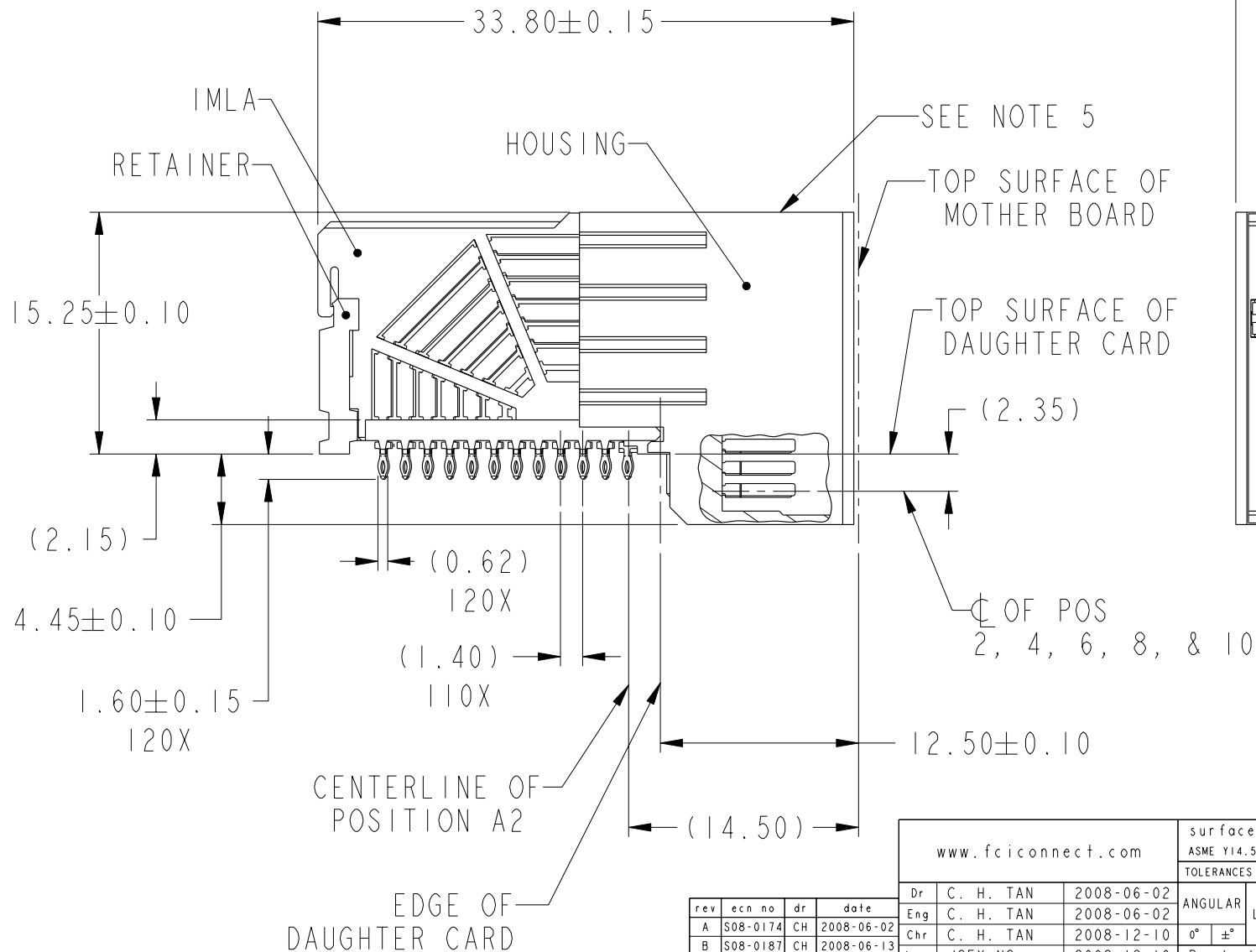




Copyright FCI.

PRODUCT NUMBER  
SEE TABLE, SHEET 5



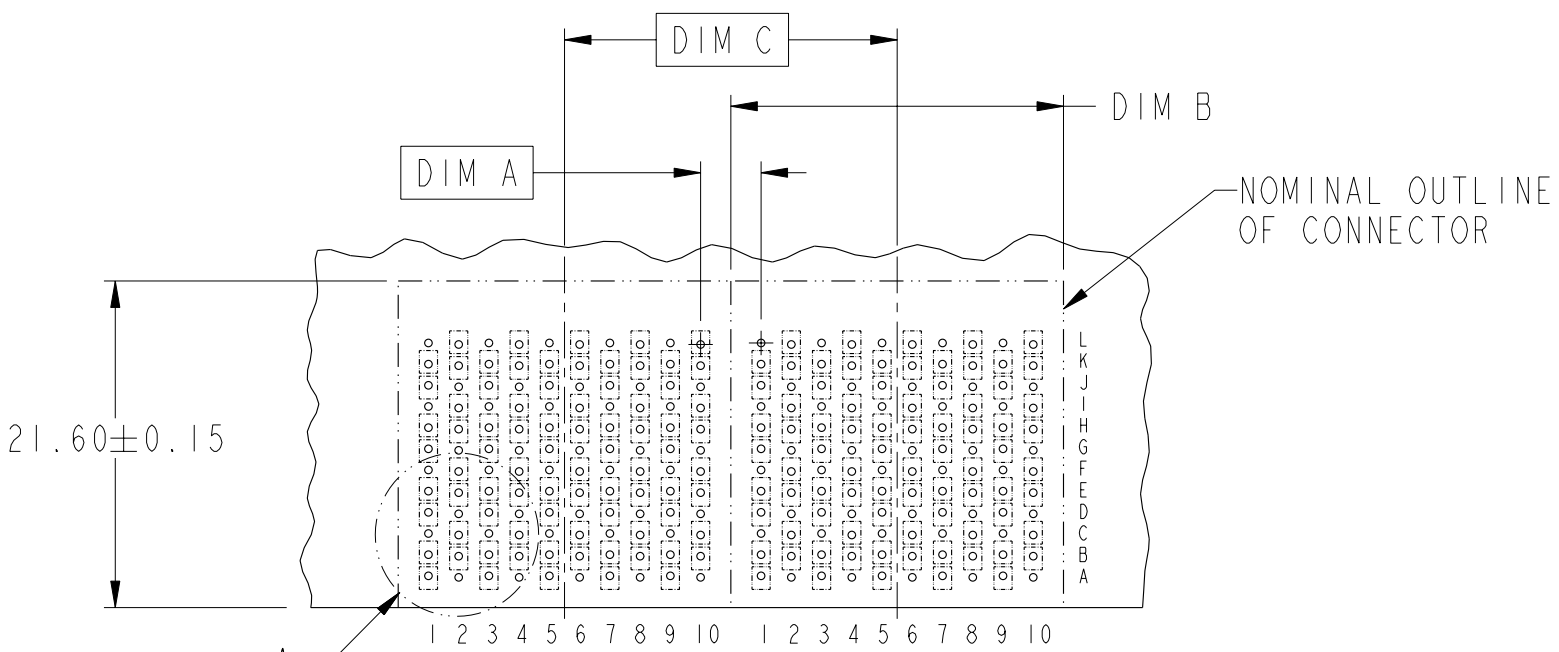
rev	ecn no	dr	date
A	S08-0174	CH	2008-06-02
B	S08-0187	CH	2008-06-13
C	S08-0405	CH	2008-12-10
-	-	-	-
-	-	-	-
-	-	-	-

www.fciconnect.com			surface - ✓ ASME Y14.5	tolerance std ASME Y14.5	projection TOLERANCES UNLESS OTHERWISE SPECIFIED	MM
Dr	C. H. TAN	2008-06-02	ANGULAR LINEAR	0.X ±	size A4	Scale 5:2
Eng	C. H. TAN	2008-06-02		0.XX ±	ECN	***
Chr	C. H. TAN	2008-12-10		0.XXX ±	Spec ref	
Appr	JOEY NG	2008-12-10	Product family AirMax VS			
FCI			title AirMax VS R/A HEADER ASSY PRESS-FIT, 120 POS, 22MM			Rev. C
			catalog no	-	CUSTOMER	sheet 1 of 5



Copyright FCI.

DESCRIPTION	DIM A	DIM B	DIM C
2-22MM MODULES PLACED END-TO-END	4.00	21.90 2X	22.00
1-20MM MODULE & 1-22MM MODULE PLACED END-TO-END	3.00	19.90 1X & 21.90 1X	21.00



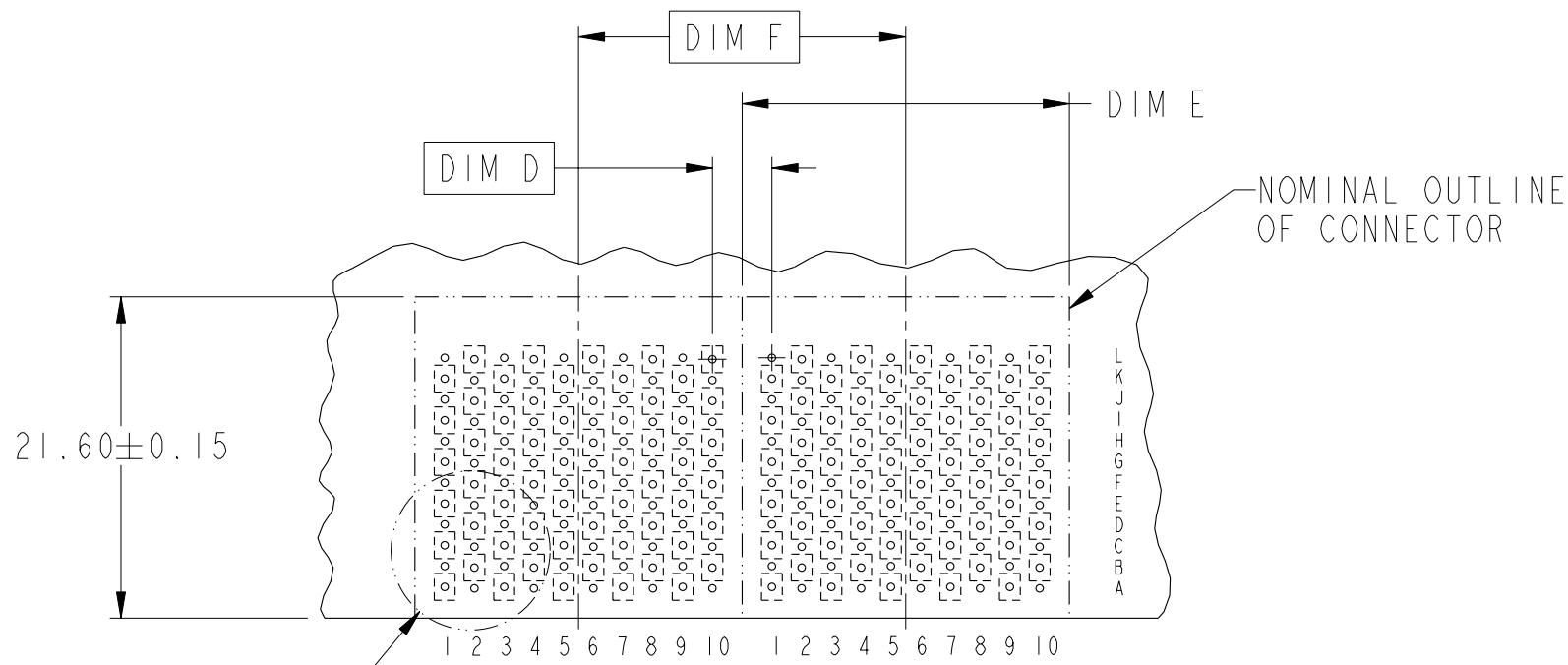
RECOMMENDED PCB LAYOUT  
FOR DIFFERENTIAL APPLICATIONS  
COMPONENT SIDE  
(TWO ADJACENT FOOTPRINTS SHOWN)  
NOTES 6 & 7

	title	AirMax VS R/A HEADER ASSY		dwg no	10084600	Rev.	C
		PRESS-FIT, 120 POS, 22MM					
	catalog no	-		CUSTOMER	sheet 2 of 5		



Copyright FCI.

DESCRIPTION	DIM D	DIM E	DIM F
2-22MM MODULES PLACED END-TO-END	4.00	21.90 2X	22.00
1-20MM MODULE & 1-22MM MODULE PLACED END-TO-END	3.00	19.90 1X & 21.90 1X	21.00



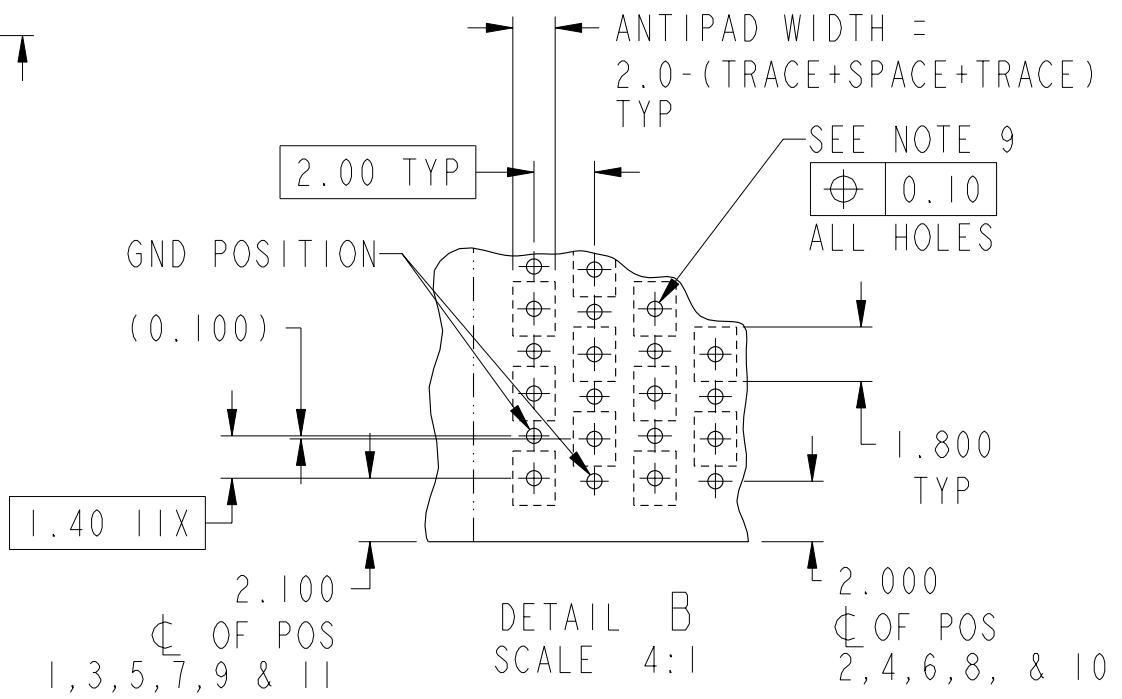
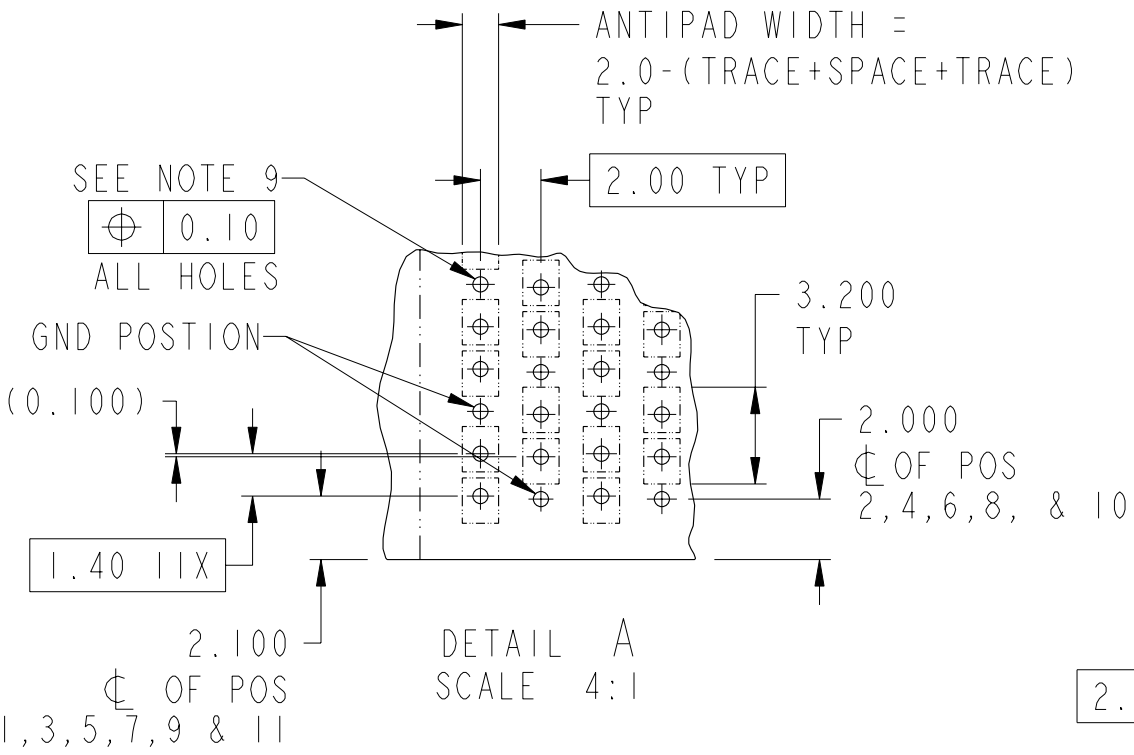
RECOMMENDED PCB LAYOUT  
FOR SINGLE ENDED APPLICATIONS  
COMPONENT SIDE  
(TWO ADJACENT FOOTPRINTS SHOWN)  
NOTES 6 & 7



title	AirMax VS R/A HEADER ASSY PRESS-FIT, 120 POS, 22MM	dwg no	10084600	Rev.	C
catalog no	-	CUSTOMER	sheet 3 of 5		



Copyright FCI.

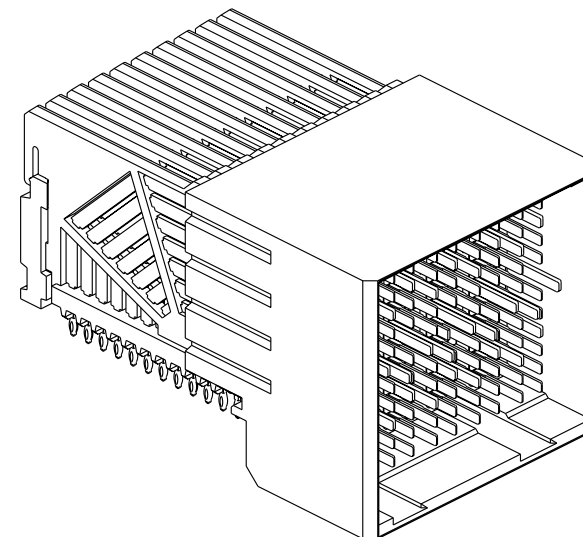


title AirMax VS R/A HEADER ASSY  
PRESS-FIT, 120 POS, 22MM  
catalog no -

dwg no 10084600  
CUSTOMER

Rev. C  
sheet 4 of 5

PART NUMBER	PRESS-FIT TAIL PLATING TYPE	SHORT DETECT CONTACT
10084600-101LF	TIN OVER NICKEL (LEAD FREE)	NO
10084600-111LF	TIN OVER NICKEL (LEAD FREE)	YES (SEE NOTE 13)



#### NOTES:

1. CONNECTOR MATERIALS:  
HOUSING & RETAINER: HIGH TEMP THERMOPLASTIC, NATURAL, UL94V-0  
IMLA PLASTIC: HIGH TEMP THERMOPLASTIC, BLACK, UL94V-0  
CONTACT: COPPER ALLOY

2. CONTACT PLATING:  
SEPARABLE INTERFACE:  
PERFORMANCE-BASED PLATING, QUALIFIED TO MEET THE  
REQUIREMENTS OF FCI PRODUCT SPECIFICATION GS-12-239,  
INCLUDING TELCORDIA GR-1217-CORE (NOVEMBER 1995)  
CENTRAL OFFICE.  
PRESS-FIT TAILS: SEE TABLE

3. PRODUCT SPECIFICATION: GS-12-239

4. APPLICATION SPECIFICATION: GS-20-035

5. PRODUCT MARKING, (PART NUMBER & LOT CODE), ON THIS SURFACE

6. REFER TO CUSTOMER DRAWING 10035911 FOR INFORMATION REGARDING  
PCB LAYOUT OF POWER AND GUIDE MODULES RELATIVE TO SIGNAL MODULES

7. POSITIONS F OF ODD NUMBERED COLUMNS AND POSITIONS G  
OF EVEN NUMBERED COLUMNS CORRESPOND TO EARLY MATE HEADER PINS

8. THERE IS NO GROUND BUSSING WITHIN THE CONNECTOR SYSTEM


9. REFER TO CUSTOMER DRAWING 10045979 FOR INFORMATION ON PCB HOLE  
DIAMETERS AND PLATING OPTIONS.

10. THIS PRODUCT MEETS EUROPEAN UNION DIRECTIVES  
AND OTHER COUNTRY REGULATIONS AS DESCRIBED IN  
GS-22-008.

11. THE HOUSING WILL WITHSTAND EXPOSURE TO 260°C  
PEAK TEMPERATURE FOR 40 SECONDS IN A CONVECTION,  
INFRA-RED OR VAPOR PHASE REFLOW OVEN.

12. PACKAGING MEETS GS-14-920 LEAD FREE LABELING  
SPECIFICATION.

13. MATING PIN F6 IS SHORTER THAN THE REMAINING  
SIGNAL PIN. NOMINAL MATING WIPE FOR PIN F6  
IS 0.5MM LESS THAN ALL REMAINING SIGNAL PINS.

14. A  SYMBOL WILL BE NEXT TO ANY DIMENSION,  
VIEW, OR NOTE WHICH HAS BEEN MODIFIED WITH  
THE CURRENT DRAWING REVISION.

	title	AirMax VS R/A HEADER ASSY	dwg no	10084600	Rev.	C
	catalog no	-	CUSTOMER	sheet 5 of 5		

# Mouser Electronics

Authorized Distributor

Click to View Pricing, Inventory, Delivery & Lifecycle Information:

[FCI / Amphenol:](#)

[10084600-101LF](#)