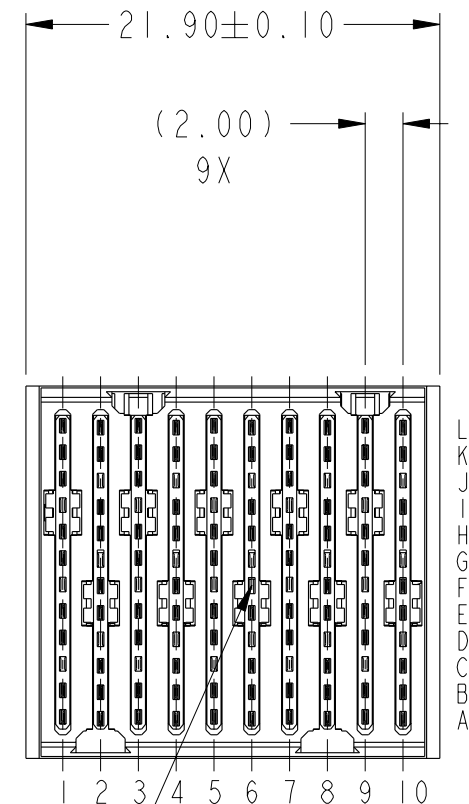
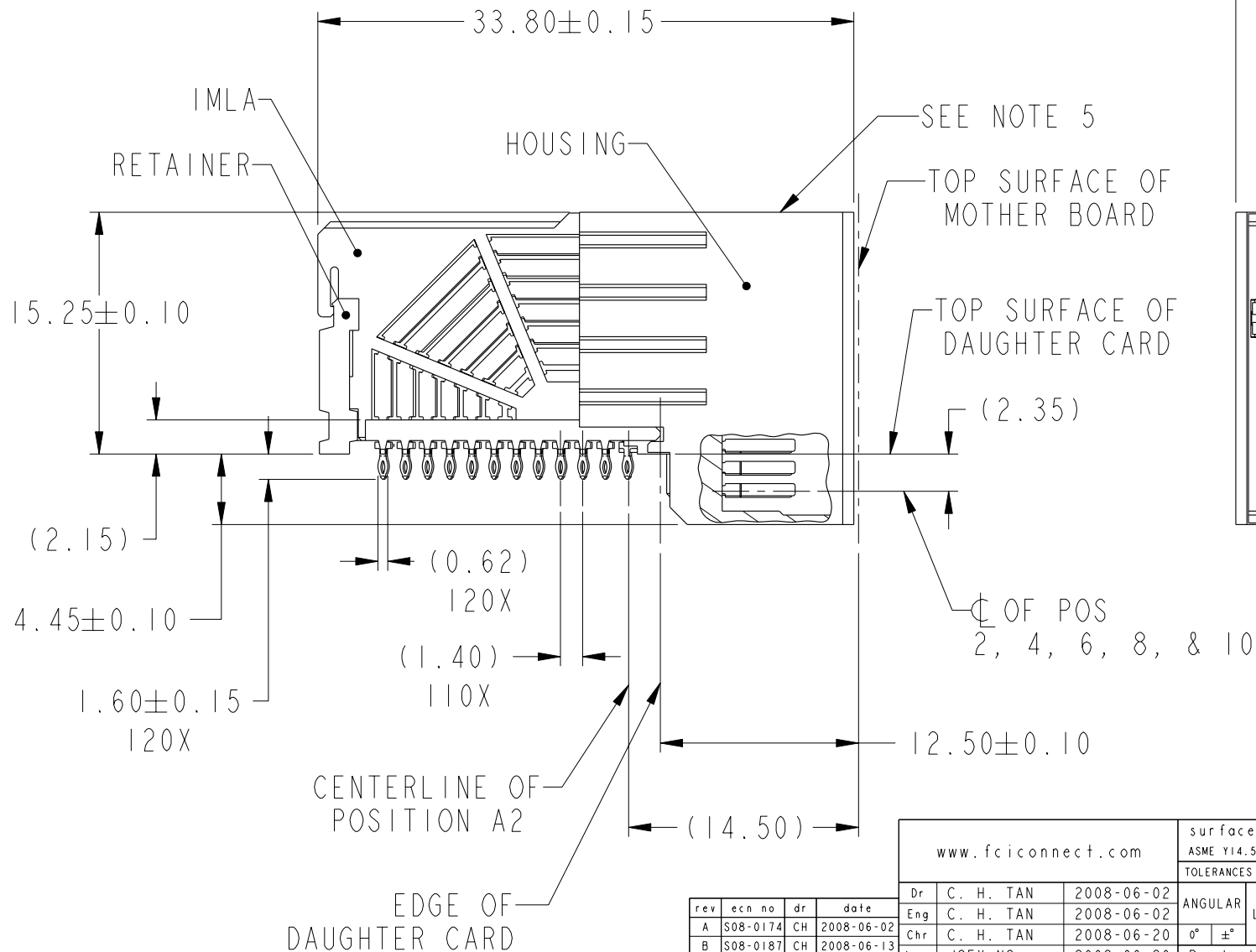



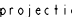




Copyright FCI.

PRODUCT NUMBER
SEE TABLE, SHEET 5



rev	ecn no	dr	date
A	S08-0174	CH	2008-06-02
B	S08-0187	CH	2008-06-13
C	S08-0192	CH	2008-06-20
-	-	-	-
-	-	-	-
-	-	-	-

www.fciconnect.com			surface -  ASME Y14.5		tolerance std ASME Y14.5 -							
			TOLERANCES UNLESS OTHERWISE SPECIFIED									
Dr	C. H. TAN	2008-06-02	ANGULAR	LINEAR	0.X	±	size A4	Scale 5:2				
Eng	C. H. TAN	2008-06-02			0.XX	±						
Chr	C. H. TAN	2008-06-20			0.XXX	±						
Appr	JOEY NG	2008-06-20	Product family		AirMax VS		ECN ***					
			Spec ref									
			title AirMax VS R/A HEADER ASSY PRESS-FIT, 120 POS, 22MM				dwg no 10084580			Rev C		
			catalog no -				CUSTOMER			sheet 1 of 5		

REV F - 2008-04-17

PDM: Rev:C

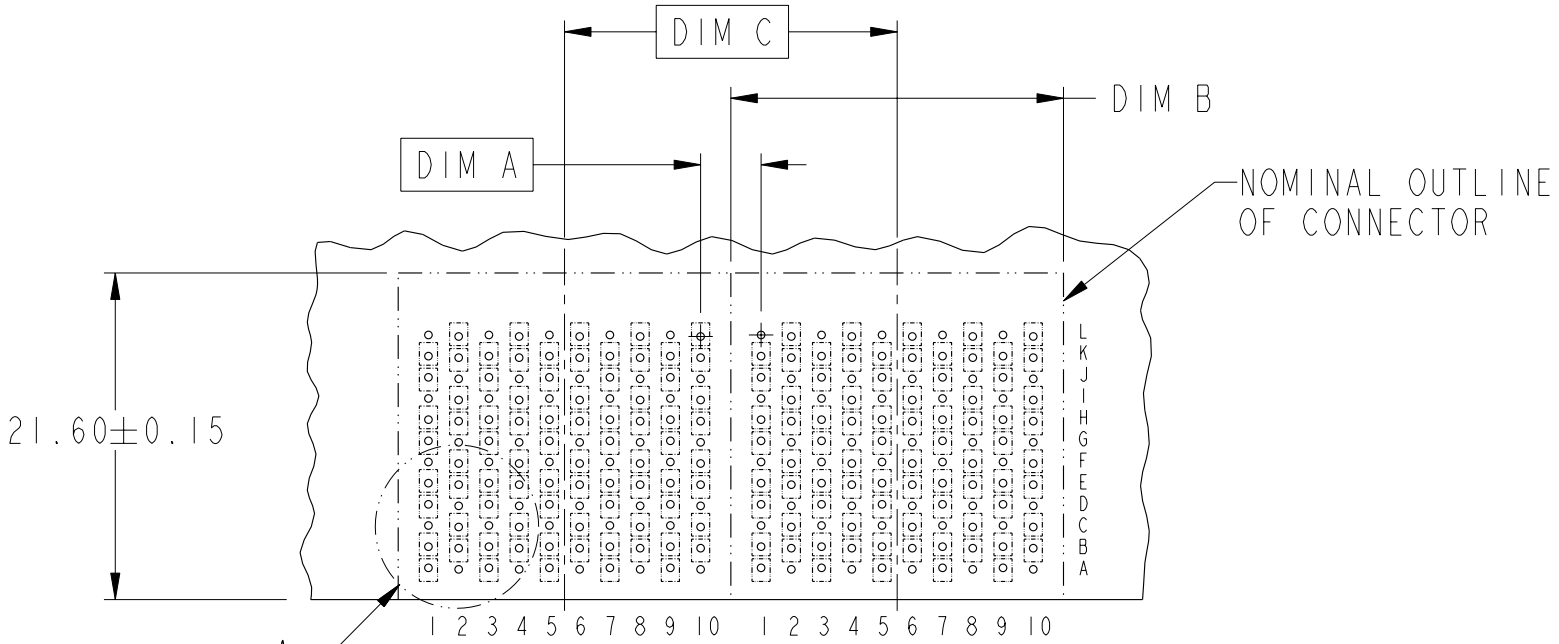
STATUS:Released

4Printed: Dec 01, 2010



Copyright FCI.

DESCRIPTION	DIM A	DIM B	DIM C
2-22MM MODULES PLACED END-TO-END	4.00	21.90 2X	22.00
1-20MM MODULE & 1-22MM MODULE PLACED END-TO-END	3.00	19.90 1X & 21.90 1X	21.00



RECOMMENDED PCB LAYOUT
FOR DIFFERENTIAL APPLICATIONS
COMPONENT SIDE
(TWO ADJACENT FOOTPRINTS SHOWN)
NOTES 6 & 7

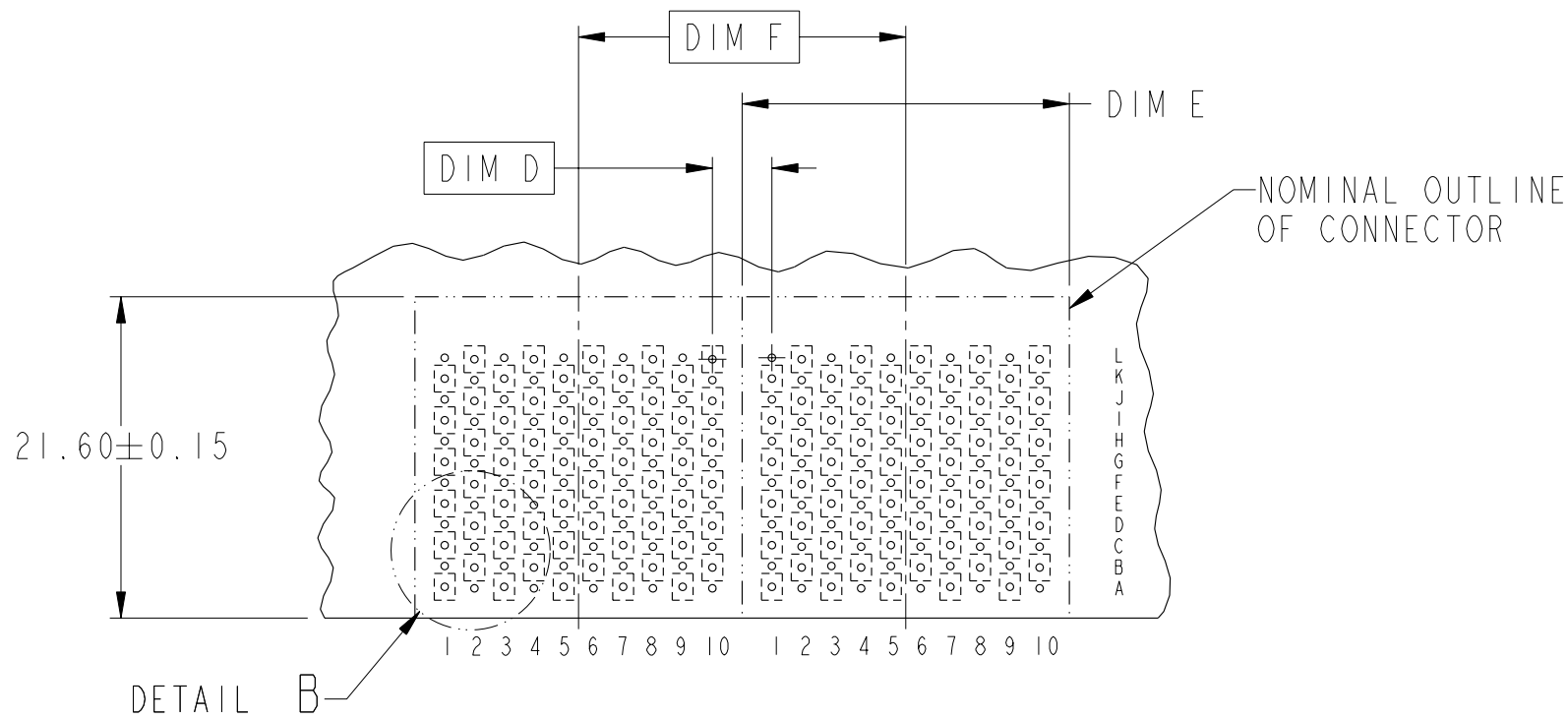


title	AirMax VS R/A HEADER ASSY PRESS-FIT, 120 POS, 22MM	dwg no	10084580	Rev.	C
catalog no	-	CUSTOMER	sheet 2 of 5		



Copyright FCI.

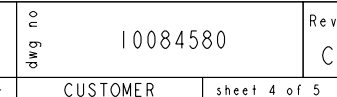
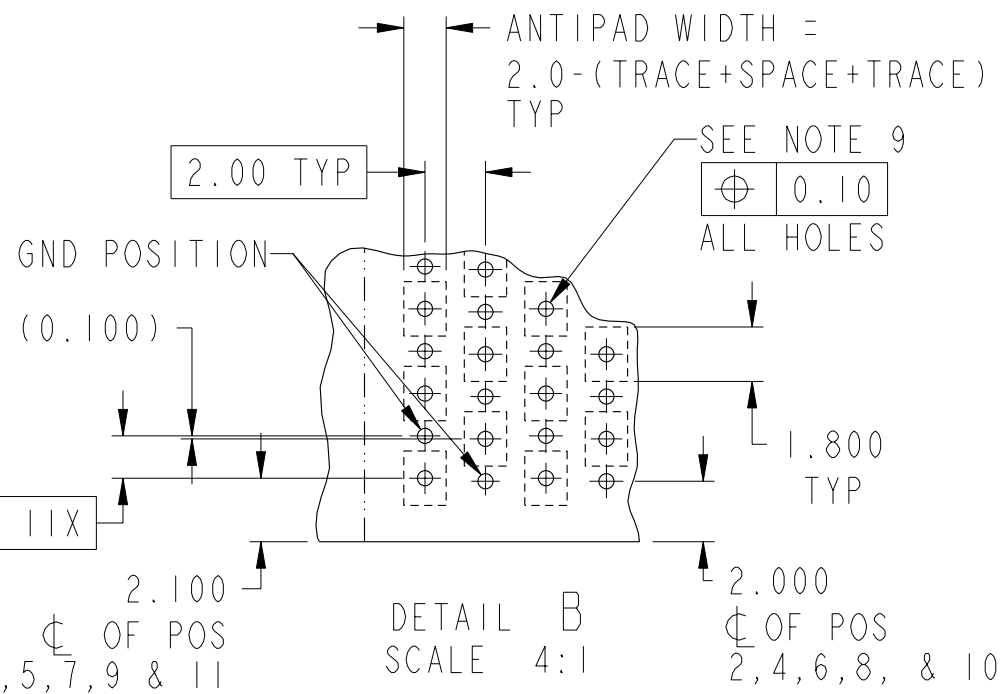
DESCRIPTION	DIM D	DIM E	DIM F
2-22MM MODULES PLACED END-TO-END	4.00	21.90 2X	22.00
1-20MM MODULE & 1-22MM MODULE PLACED END-TO-END	3.00	19.90 1X & 21.90 1X	21.00



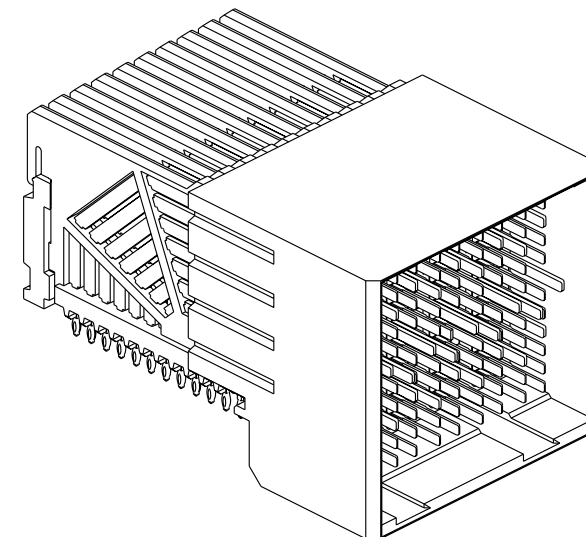
RECOMMENDED PCB LAYOUT
FOR SINGLE ENDED APPLICATIONS
COMPONENT SIDE
(TWO ADJACENT FOOTPRINTS SHOWN)
NOTES 6 & 7



title	AirMax VS R/A HEADER ASSY PRESS-FIT, 120 POS, 22MM	dwg no	10084580	Rev.	C
catalog no	-	CUSTOMER	sheet 3 of 5		



PART NUMBER	PRESS-FIT TAIL PLATING TYPE	SHORT DETECT CONTACT
10084580-101LF	TIN OVER NICKEL (LEAD FREE)	NO
10084580-111LF	TIN OVER NICKEL (LEAD FREE)	YES (SEE NOTE 13)



NOTES:

1. CONNECTOR MATERIALS:
HOUSING & RETAINER: HIGH TEMP THERMOPLASTIC, NATURAL, UL94V-0
IMLA PLASTIC: HIGH TEMP THERMOPLASTIC, BLACK, UL94V-0
CONTACT: COPPER ALLOY

2. CONTACT PLATING:
SEPARABLE INTERFACE:
PERFORMANCE-BASED PLATING, QUALIFIED TO MEET THE
REQUIREMENTS OF FCI PRODUCT SPECIFICATION GS-12-239,
INCLUDING TELCORDIA GR-1217-CORE (NOVEMBER 1995)
CENTRAL OFFICE.
PRESS-FIT TAILS: SEE TABLE

3. PRODUCT SPECIFICATION: GS-12-239

4. APPLICATION SPECIFICATION: GS-20-035

5. PRODUCT MARKING, (PART NUMBER & LOT CODE), ON THIS SURFACE

6. REFER TO CUSTOMER DRAWING 10035911 FOR INFORMATION REGARDING
PCB LAYOUT OF POWER AND GUIDE MODULES RELATIVE TO SIGNAL MODULES

7. POSITIONS F OF ODD NUMBERED COLUMNS AND POSITIONS G
OF EVEN NUMBERED COLUMNS CORRESPOND TO EARLY MATE HEADER PINS

8. THERE IS NO GROUND BUSSING WITHIN THE CONNECTOR SYSTEM


9. REFER TO CUSTOMER DRAWING 10045979 FOR INFORMATION ON PCB HOLE
DIAMETERS AND PLATING OPTIONS.

10. THIS PRODUCT MEETS EUROPEAN UNION DIRECTIVES
AND OTHER COUNTRY REGULATIONS AS DESCRIBED IN
GS-22-008.

11. THE HOUSING WILL WITHSTAND EXPOSURE TO 260°C
PEAK TEMPERATURE FOR 40 SECONDS IN A CONVECTION,
INFRA-RED OR VAPOR PHASE REFLOW OVEN.

12. PACKAGING MEETS GS-14-920 LEAD FREE LABELING
SPECIFICATION.

13. MATING PIN F6 IS SHORTER THAN THE REMAINING
SIGNAL PIN. NOMINAL MATING WIPE FOR PIN F6
IS 0.5MM LESS THAN ALL REMAINING SIGNAL PINS

14. A  SYMBOL WILL BE NEXT TO ANY DIMENSION,
VIEW, OR NOTE WHICH HAS BEEN MODIFIED WITH
THE CURRENT DRAWING REVISION.

	title	AirMax VS R/A HEADER ASSY		dwg no	10084580	Rev C
		PRESS-FIT, 120 POS, 22MM				
	catalog no	-	CUSTOMER	sheet 5 of 5		

Mouser Electronics

Authorized Distributor

Click to View Pricing, Inventory, Delivery & Lifecycle Information:

[FCI / Amphenol:](#)

[10084580-101LF](#)