

CAT. NO. & DIMENSIONS

NO. OF CONTACTS (n)	CAT. NO.	DIMENSIONS (NOTE2)			
		A ± 0.2	B ± 0.2	C ± 0.2	D ± 0.1
4	SFW4R-1/2ST__	9.8	8.6	3.0	5.3
5	SFW5R-1/2ST__	10.8	9.6	4.0	6.3
6	SFW6R-1/2ST__	11.8	10.6	5.0	7.3
7	SFW7R-1/2ST__	12.8	11.6	6.0	8.3
8	SFW8R-1/2ST__	13.8	12.6	7.0	9.3
9	SFW9R-1/2ST__	14.8	13.6	8.0	10.3
10	SFW10R-1/2ST__	15.8	14.6	9.0	11.3
11	SFW11R-1/2ST__	16.8	15.6	10.0	12.3
12	SFW12R-1/2ST__	17.8	16.6	11.0	13.3
13	SFW13R-1/2ST__	18.8	17.6	12.0	14.3
14	SFW14R-1/2ST__	19.8	18.6	13.0	15.3
15	SFW15R-1/2ST__	20.8	19.6	14.0	16.3
16	SFW16R-1/2ST__	21.8	20.6	15.0	17.3
17	SFW17R-1/2ST__	22.8	21.6	16.0	18.3
18	SFW18R-1/2ST__	23.8	22.6	17.0	19.3
19	SFW19R-1/2ST__	24.8	23.6	18.0	20.3
20	SFW20R-1/2ST__	25.8	24.6	19.0	21.3
21	SFW21R-1/2ST__	26.8	25.6	20.0	22.3
22	SFW22R-1/2ST__	27.8	26.6	21.0	23.3
23	SFW23R-1/2ST__	28.8	27.6	22.0	24.3
24	SFW24R-1/2ST__	29.8	28.6	23.0	25.3
25	SFW25R-1/2ST__	30.8	29.6	24.0	26.3
26	SFW26R-1/2ST__	31.8	30.6	25.0	27.3
27	SFW27R-1/2ST__	32.8	31.6	26.0	28.3
28	SFW28R-1/2ST__	33.8	32.6	27.0	29.3
29	SFW29R-1/2ST__	34.8	33.6	28.0	30.3
30	SFW30R-1/2ST__	35.8	34.6	29.0	31.3

CAT. NO.

SFW (n) R - 1 ST __

SERIES NAME

NO. OF CONTACTS

RIGHT ANGLE TYPE

FOR FPC/FFC, CONTACT DIRECTION

1. LOWER CONTACT TYPE

2. UPPER CONTACT TYPE

FOR AUTOMATIC MOUNTING (SMT)

PACKAGE STYLE

NOTES

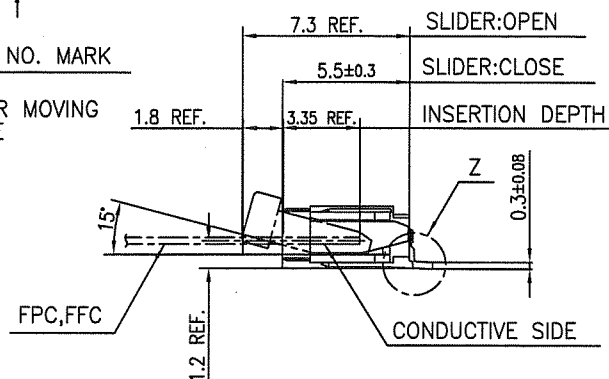
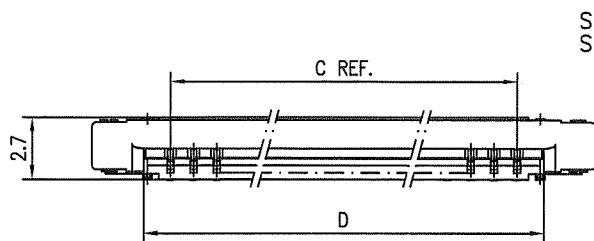
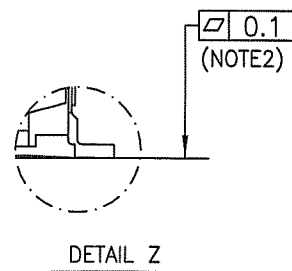
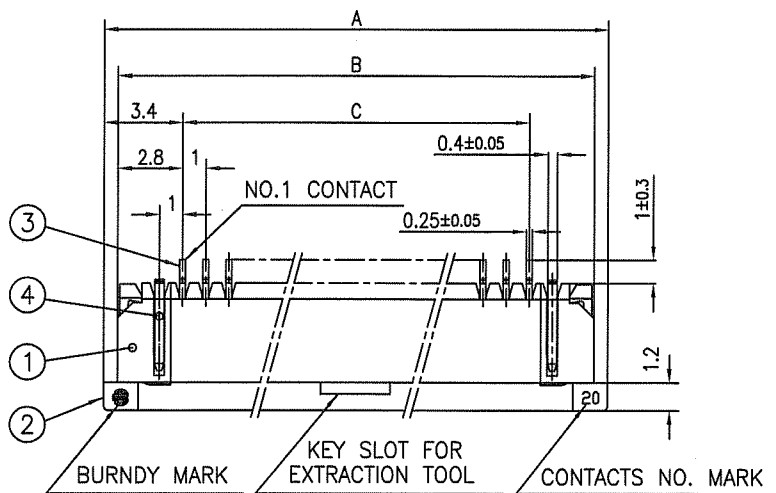
1. THIS PRODUCT IS THE CONNECTOR USED FOR FPC/FFC AND COPS WITH AUTOMATIC MOUNTING (SMT).
2. SEE PART DRAWINGS FOR DIMENSIONS A~D.

mat'l. code		surface 58/ISO 1302		tolerance ISO 406/ISO 1101		projection		product family 58RF		CODE JP	
ltr		ecn no		dr		date		tolerances unless otherwise specified		title	
4		Redman & 27, 28 position added		A.U		'93-7-20		angles		CAT NO. TABLE FOR	
A		J06-0398		H.T		9/26/'06		linear		1mm SPACING SMT CONNECTOR	
B		J09-0358		M.Y		2009-10-5				(Cat. No. SFW__R-1/2ST__)	
								scale		dwg no	
								mm		sheet 1 of 1	
								mm		size	
								mm		A4	
								mm		type	
								mm		Product Customer Drawing	
sheet index		revision		B						Rev.	
sheet		1								B	

SC-SFW01 JSA91599 91600 91604 91605
form: A4

1

2

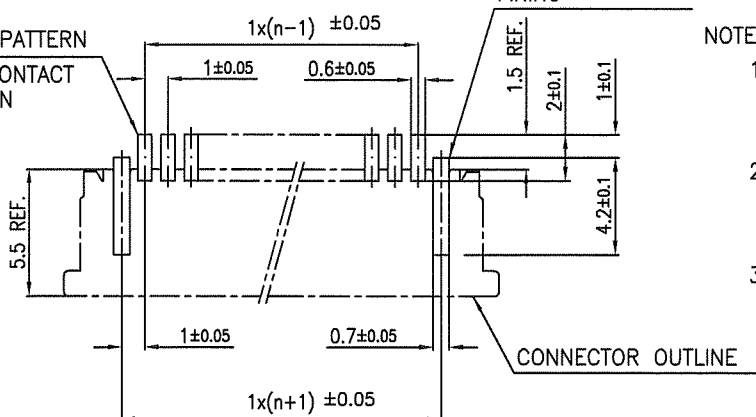


PT. NO.	PARTS NAME	MATERIAL	Q'TY	NOTE
1	HOUSING	PPS RESIN GLASS REINFORCED (UL94V-0)	1	COLOR: BROWN
2	SLIDER	PPS RESIN GLASS REINFORCED (UL94V-0)	1	COLOR: BLACK
3	CONTACT	PHOSPHOR BRONZE	n	PLATING: TIN ALLOY
4	MOUNTING PLATE		2	

n : NO. OF CONTACTS

RECOMMENDED PC BOARD LAYOUT (COMPONENT SIDE)

BASIC PATTERN NO.1 CONTACT POSITION

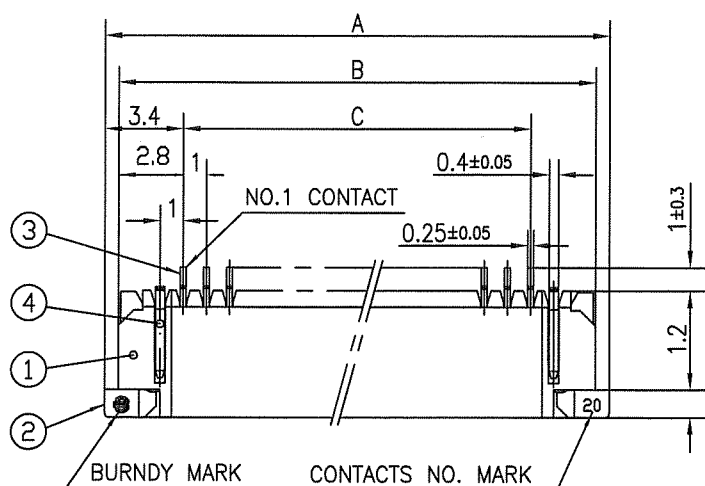


NOTES

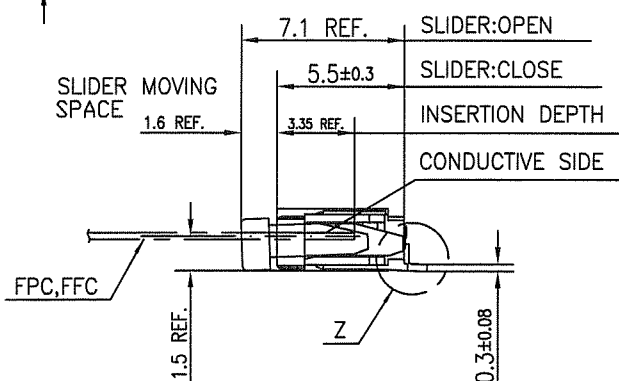
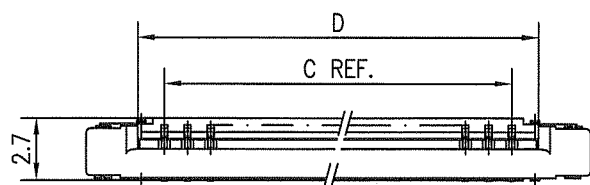
1. THIS PRODUCT IS THE CONNECTOR USED FOR FPC/FFC AND COPEs WITH AUTOMATIC MOUNTING (SMT).
2. FLATNESS FOR CONTACT TERMINAL HOUSING MUST BE WITHIN TOLERANCE IN Z PORTION DETAILED DRAWING.
3. THIS PRODUCT IS LOWER CONTACT TYPE CONNECTOR.

mat'l. code				surface 58 ISO 1302		tolerance ISO 406 ISO 1101		projection mm		product family 58RF		CODE JP		
ltr	ecn no	dr	date	tolerances unless otherwise specified				mm		title				
AA	J04-0180	H.T	7/2/04	±0.2						1mm SPACING SMT CONNECTOR				
AB	J06-0398	H.T	9/26/06	linear						(Cat. No. SFW__R-1ST__)				
AC	J09-0358	M.Y	2009-10-5					scale X						
				dr	H. YANASHITA		2009-10-5		FCI		dwg no		sheet 1 of 1	size
				engr	H. YANASHITA		2009-10-5				JSA 91599		A4	
				chr	S. Watanabe		2009-10-6				type		Product Customer Drawing	
				appd	P. Cheloum		2009-10-6							
sheet index	revision	AC	1									Rev. AC		

SC-SFW01 JSA91598
form: A4

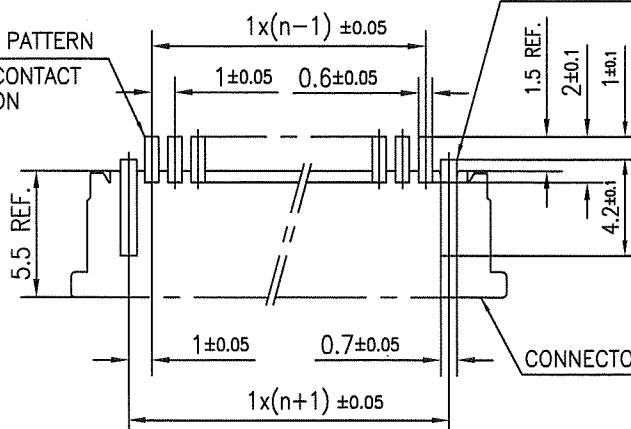


DETAIL Z



PT. NO.	PARTS NAME	MATERIAL	Q'TY	NOTE
1	HOUSING	PPS RESIN GLASS REINFORCED (UL94V-0)	1	COLOR: BROWN
2	SLIDER		1	COLOR: BLACK
3	CONTACT	PHOSPHOR BRONZE	n	PLATING: TIN ALLOY
4	MOUNTING PLATE		2	

n : NO. OF CONTACTS

RECOMMENDED PC BOARD LAYOUT
(COMPONENT SIDE)BASIC PATTERN
NO.1 CONTACT
POSITION

NOTES

1. THIS PRODUCT IS THE CONNECTOR USED FOR FPC/FFC AND COPES WITH AUTOMATIC MOUNTING (SMT).
2. FLATNESS FOR CONTACT TERMINAL HOUSING MUST BE WITHIN TOLERANCE IN Z PORTION DETAILED DRAWING.
3. THIS PRODUCT IS UPPER CONTACT TYPE CONNECTOR.

mat'l. code				surface 58	tolerance ISO 406	projection	product family 58RF	CODE JP
ltr	ecn no	dr	date	ISO 1302	ISO 1101	mm	title 1mm SPACING SMT CONNECTOR (Cat. No. SFW__R-2ST__)	
AA	J04-0180	H.T	7/2/'04	tolerances unless otherwise specified	±0.2			
AB	J06-0398	H.T	9/26/'06	angles	linear	scale X	dwg no sheet 1 of 1 size JSA 91600 A4	
AC	J09-0358	M.Y	2009-10-5					
				dr	H. SATO	2009-10-5	type Product Customer Drawing	
				engr	H. SATO	2009-10-5		
				chr	S. Watanabe	2009-10-6		
				appd	P. Chelam	2009-10-6		
sheet index	revision	AC	1					Rev. AC

SC-SFW01 JSA91598
form: A4

CAT. NO. & DIMENSIONS

NO. OF CONTACTS (n)	CAT. NO. (NOTE2)	DIMENSIONS (NOTE3)		
		E ± 5	F ± 0.3	G ± 0.1
4	SFW4R-1/2STE1	20.4	16	—
5	SFW5R-1/2STE1	28.4	24	—
6	SFW6R-1/2STE1	28.4	24	—
7	SFW7R-1/2STE1	28.4	24	—
8	SFW8R-1/2STE1	28.4	24	—
9	SFW9R-1/2STE1	28.4	24	—
10	SFW10R-1/2STE1	28.4	24	—
11	SFW11R-1/2STE1	28.4	24	—
12	SFW12R-1/2STE1	28.4	24	—
13	SFW13R-1/2STE1	36.4	32	28.4
14	SFW14R-1/2STE1	36.4	32	28.4
15	SFW15R-1/2STE1	36.4	32	28.4
16	SFW16R-1/2STE1	36.4	32	28.4
17	SFW17R-1/2STE1	48.4	44	40.4
18	SFW18R-1/2STE1	48.4	44	40.4
19	SFW19R-1/2STE1	48.4	44	40.4
20	SFW20R-1/2STE1	48.4	44	40.4
21	SFW21R-1/2STE1	48.4	44	40.4
22	SFW22R-1/2STE1	48.4	44	40.4
23	SFW23R-1/2STE1	48.4	44	40.4
24	SFW24R-1/2STE1	48.4	44	40.4
25	SFW25R-1/2STE1	48.4	44	40.4
26	SFW26R-1/2STE1	48.4	44	40.4
27	SFW27R-1/2STE1	48.4	44	40.4
28	SFW28R-1/2STE1	60.4	56	52.4
29	SFW29R-1/2STE1	60.4	56	52.4
30	SFW30R-1/2STE1	60.4	56	52.4

CAT. NO.

SFW (n) R - 1 ST E1
 SERIES NAME
 NO. OF CONTACTS
 RIGHT ANGLE TYPE
 FOR FPC/FFC, CONTACT DIRECTION
 1. LOWER CONTACT TYPE
 2. UPPER CONTACT TYPE
 FOR AUTOMATIC MOUNTING (SMT)
 TAPE PACKAGING

NOTES

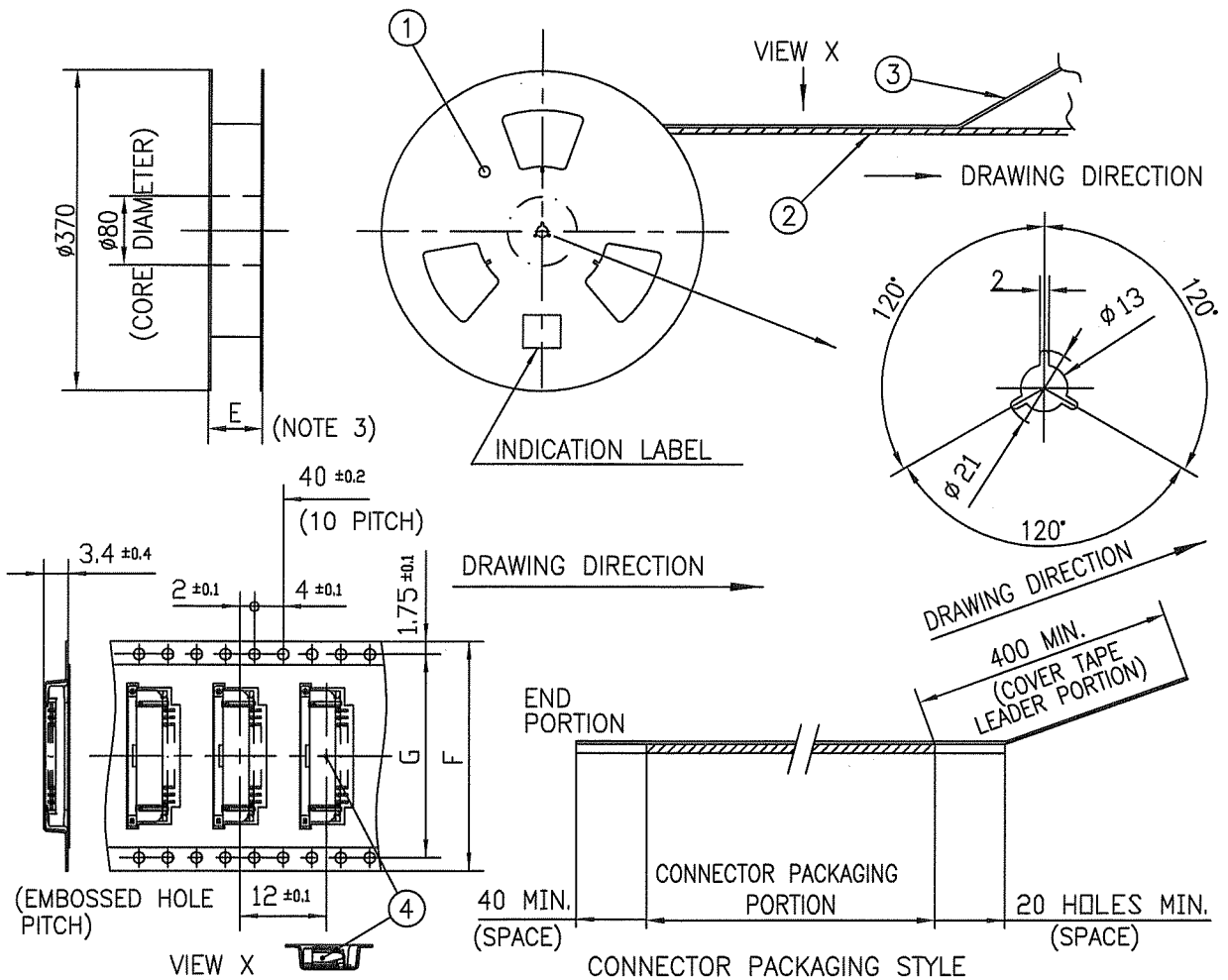
1. THIS PRODUCT IS THE CONNECTOR USED FOR FPC/FFC AND COPS WITH AUTOMATIC MOUNTING (SMT).
2. THIS CATALOG NO. INDICATES PLASTIC TAPE PACKAGED CONNECTOR.
3. SEE PART DRAWINGS FOR DIMENSIONS E~G.

mat'l. code		surface 58/ tolerance ISO 1302 ✓ ISO 406 ISO 1101		projection		product family 58RF		CODE JP	
ltr	ecn no	dr	date	tolerances unless otherwise specified		title		sheet 1 of 1 size	
4	REWORK 2729 POSITIONS ADDED	A.U	7/20/93	angles		CAT NO. TABLE FOR PLASTIC TAPE PACKAGED 1mm SPACING SMT CONNECTOR (Cat. No. SFW__R-1/2STE1)		A4	
A	J06-0398	H.T	9/26/06	linear		mm		JSA 91601	
B	J09-0358	M.Y	2009-10-5			scale X		type Product Customer Drawing	
		dr	K. YAMASHITA	2009-10-5		FCI		Rev. B	
		engr	K. YAMASHITA	2009-10-5					
		chr	D. W. H. H.	2009-10-6					
		appd	D. H. H. H.	2009-10-6					
sheet index	revision	B	1						

SC-SFW01 JSA91602 91603 91598 91599 91600 91604 91605 1

form: A4

2



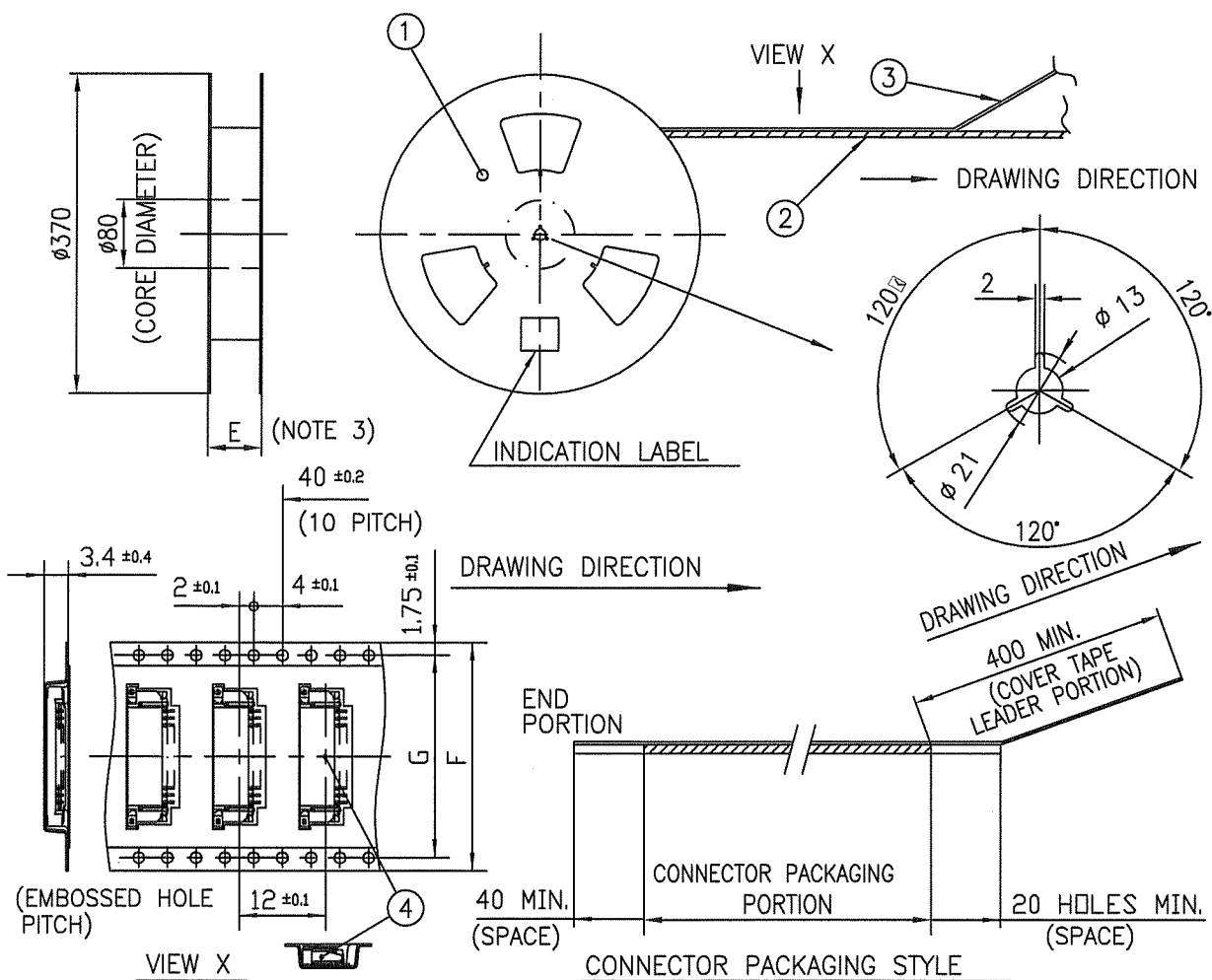
PT. NO.	PARTS NAME	CAT. NO.	MATERIAL	Q'TY	NOTE
1	REEL	—	CARDBOARD	1	COLOR:WHITE
2	PLASTIC (EMBOSS) TAPE	—	PET	—	COLOR:TRANSPARENCY
3	COVER	—	POLYESTER	—	COLOR:TRANSPARENCY
4	SURFLOK CONNECTOR	SFW__R-1ST__	SEE ATTACHED DWG.	2000	LOWER CONTACT TYPE

NOTES

- THIS IS PLASTIC TAPE PACKAGED CONNECTOR USED FOR FPC/FFC AND COPES WITH AUTOMATIC MOUNTING (SMT).
- SEE JIS C 0806 (PACKING OF ELECTRONIC COMPONENTS ON CONTINUOUS TAPES (SURFACE MOUNTING DEVICES)) FOR SHAPE AND DIMENSIONS OF PLASTIC (EMBOSS) TAPE AND REEL.
- E DIMENSION IS PORTION OF THE CORE.

mat'l. code				surface ISO 1302		tolerance ISO 406 ISO 1101		projection mm		product family 58RF		CODE JP	
ltr ecn no dr date				tolerances unless otherwise specified		angles linear		scale		title PLASTIC TAPE PACKAGED 1mm SPACING SMT CONNECTOR (Cat. No. SFW__R-1STE1)			
1 — M.H 4/21/'94				±5						dwg no sheet 1 of 1 size JSA 91602 A4 type Product Customer Drawing			
2 — M.K 6/27/'96													
A J06-0398 H.T 9/26/'06				±5'									
B J09-0358 M.Y 2009-10-5													
				dr H. YAMASHITA 2009-10-5		engr H. YAMASHITA 2009-10-5		chr S. Watanabe 2009-10-6					
				appd J. Chakraborty 2009-10-6									
sheet index		revision B		sheet 1								Rev. B	

SC-SFW01 JSA91601
form: A4



PT. NO.	PARTS NAME	CAT. NO.	MATERIAL	Q'TY	NOTE
1	REEL	_____	CARDBOARD	1	COLOR:WHITE
2	PLASTIC (EMBOSS) TAPE	_____	PET	_____	COLOR:TRANSPARENCY
3	COVER	_____	POLYESTER	_____	COLOR:TRANSPARENCY
4	SURFLOK CONNECTOR	SFW__R-2ST__	SEE ATTACHED DWG.	2000	UPPER CONTACT TYPE

NOTES

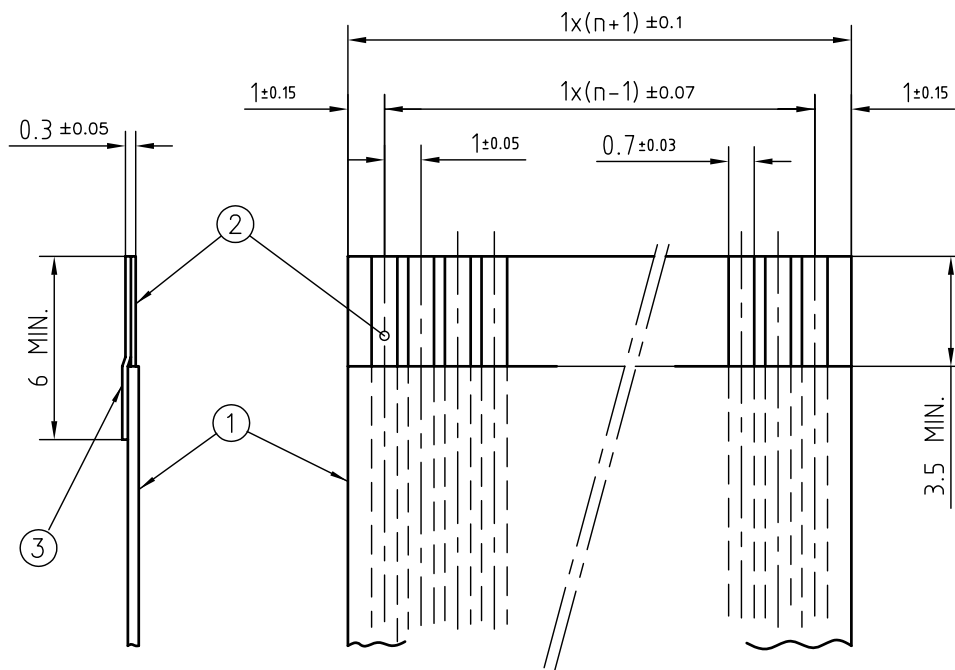
- THIS IS PLASTIC TAPE PACKAGED CONNECTOR USED FOR FPC/FFC AND CYPES WITH AUTOMATIC MOUNTING (SMT).
- SEE JIS C 0806 (PACKING OF ELECTRONIC COMPONENTS ON CONTINUOUS TAPES (SURFACE MOUNTING DEVICES)) FOR SHAPE AND DIMENSIONS OF PLASTIC (EMBOSS) TAPE AND REEL.
- E DIMENSION IS PORTION OF THE CORE.

mat'l. code				surface ISO 1302	tolerance ISO 406 ISO 1101	projection	product family	58RF	CODE JP
ltr	ecn no	dr	date	tolerances unless otherwise specified		mm	title PLASTIC TAPE PACKAGED 1mm SPACING SMT CONNECTOR (Cat. No. SFW__R-2STE1)		
1	---	M.H	4/21/'94	angles	linear				
2	---	M.K	6/27/'96	±5°		scale	dwg no		
A	J06-0398	H.T	9/26/'06			mm			
B	J09-0358	M.Y	2009-10-5	dr	M.YAMAGUCHI	2009-10-5	sheet 1 of 1		
				engr	M.YAMAGUCHI	2009-10-5			
				chr	S. With 1/2	2009-10-6	JSA 91603		
				appd	P. Andam	2009-10-6			
sheet index	revision	B					type Product Customer Drawing		
	sheet	1							
							Rev. B		

SC-SFW01 JSA91601
form: A4


RECOMMENDED CABLE (FFC)

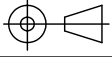
n : NO. OF CONDUCTOR



PT. NO.	PARTS NAME	MATERIAL	NOTE
1	INSULATOR	FLAME RESISTING POLYESTER OR EQUAL	
2	CONDUCTOR	COPPER FOIL	PLATING:TIN OR SOLDER 1um MIN.
3	SUPPORTING TAPE	FLAME RESISTING POLYESTER OR EQUAL	

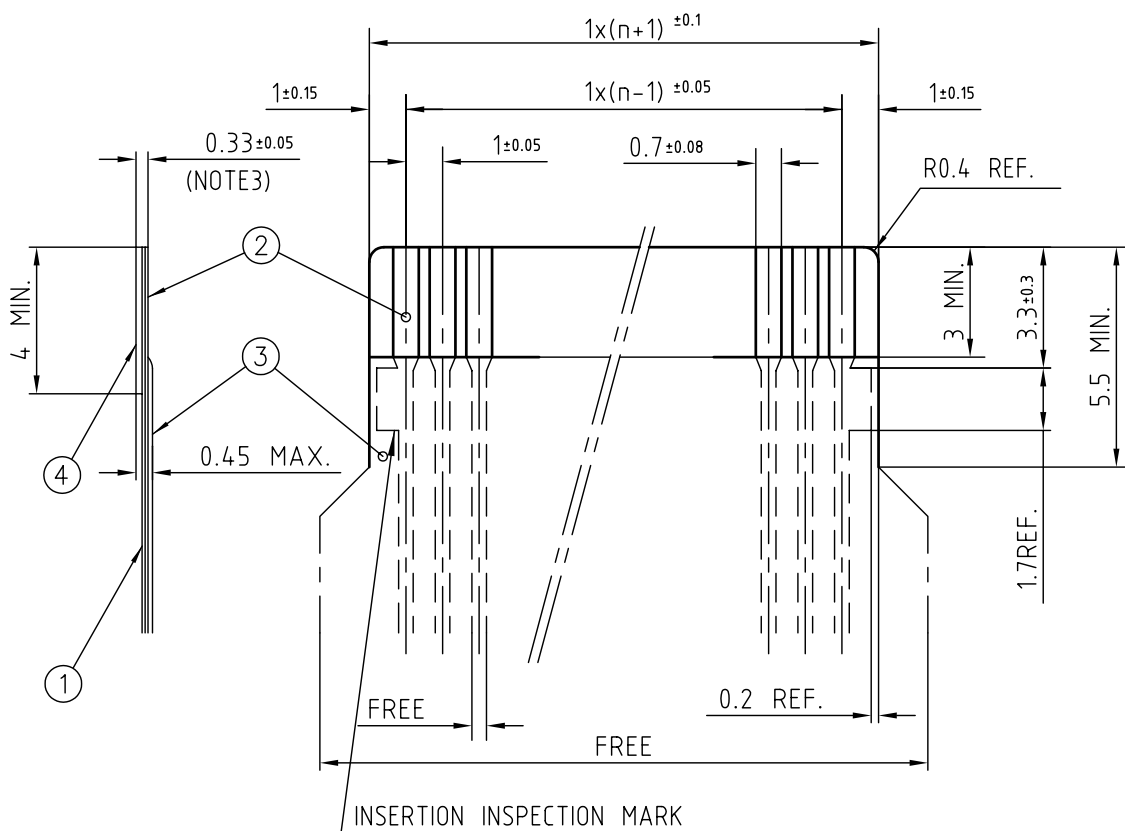
NOTES

1. NO BURR AT EACH PORTION.
2. NO PEELING IN COMMON USE.
3. A  SYMBOL WILL BE NEXT TO ANY DIMENSION, VIEW, OR NOTE WHICH HAS BEEN MODIFIED WITH THE CURRENT DRAWING REVISION.

mat'l. code				surface 58/ISO 1302	tolerance ISO 406 ISO 1101	projection	product family 58RF	CODE JP
ltr	ecn no	dr	date	tolerances unless otherwise specified			title RECOMMENDED CABLE (Cat. No. SFW__R-1/2__)	
AA	J05-0055	H.T	05-02-04	angles	linear			
AB	J06-0398	H.T	06-09-26			mm	dwg no sheet 1 of 1 size JSA 91604 A4	
AC	S08-0276	DGOH	08-08-22			scale		
				dr	H. TAKAKURA	06-09-26	type Product Customer Drawing	
				enr	H. TAKAKURA	06-09-26		
				chr	DENNIS GOH	08-08-22		
				appd	JOEY NG	08-08-22		
sheet index	revision sheet	AC	1					Rev. AC


RECOMMENDED CABLE (FPC)

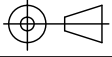
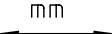
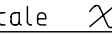
n : NO. OF CONDUCTOR



PT. NO.	PARTS NAME	MATERIAL	THICKNESS (μm)
1	BASE FILM	POLYIMIDE OR POLYESTER OR EQUAL	25
2	CONDUCTOR	COPPER FOIL(PLATING:SOLDER 1μm MIN.)	35
3	OVERLAY	POLYIMIDE OR POLYESTER OR EQUAL	—
4	SUPPORTING TAPE	POLYESTER OR POLYIMIDE OR EQUAL	188

NOTES

1. NO BURR AT EACH PORTION.
2. NO PEELING IN COMMON USE.
3. TOTAL THICKNESS LIMIT OF EACH MATERIAL (INCLUDING ADHESIVE AGENT) IS SPECIFIED.
4. A  SYMBOL WILL BE NEXT TO ANY DIMENSION, VIEW, OR NOTE WHICH HAS BEEN MODIFIED WITH THE CURRENT DRAWING REVISION.

mat'l. code				surface 58/ISO 1302	tolerance ISO 406 ISO 1101	projection 	product family 58RF	CODE JP
ltr	ecn no	dr	date	tolerances unless otherwise specified			title RECOMMENDED CABLE (Cat. No. SFW__R-1/2__)	
AA	J05-0055	H.T	05-02-04	angles	linear			
AB	J06-0398	H.T	06-09-26			scale 	dwg no sheet 1 of 1 size JSA 91605 A4	
AC	S08-0276	DGOH	08-08-22					
				dr	H. TAKAKURA	06-09-26	type Product Customer Drawing	
				enr	H. TAKAKURA	06-09-26		
				chr	DENNIS GOH	08-08-22		
				appd	JOEY NG	08-08-22		
sheet index	revision sheet	AC	1					Rev. AC

Mouser Electronics

Authorized Distributor

Click to View Pricing, Inventory, Delivery & Lifecycle Information:

[FCI / Amphenol:](#)

[SFW20R-2STE1](#) [SFW6R-2STE1](#)