

REFERENCE SPECIFICATIONS

-NFC 93425 (in compliance with HE 507)

PHYSICAL CHARACTERISTICS

-INSULATOR MATERIAL: THERMOPLASTIC UL94V0

-CONTACT MATERIAL: BRASS
GOLD OVER NICKEL

-ACCESSORIES: STEEL FOR BRACKETS
Cadmium plated, yellow passivation

-SHELLS: STEEL
Cadmium plated, yellow passivation

ELECTRICAL CHARACTERISTICS

-NOMINAL CURRENT: 7.5A (SIGNAL CONTACT)

-CONTACT RESISTANCE: ≤ 7.3 m Ohms(SIGNAL)

-CONTACT/CONTACT : ≥ 1000 V

-CONTACT/GROUND : ≥ 1200 V

-INSULATION RESISTANCE: ≥ 5000 MOhms

ENVIRONMENTAL CHARACTERISTICS

- CLIMATIC CATEGORY: 55/125/21

TEMPERATURE RANGE -55°C TO +125°C

DAMP HEAT STEADY STATE 56 DAYS

SALT SPRAY 48 HOURS

Series

DBML13W3P500MN

Shell size: **E A B C D**
(see sheet 3)

M :Characteristics
for the DM serie

Front accessory definition
(see sheet 2)

blank :without accessory

L :threaded insert M3

O :threaded insert UNC 4-40

V :female screw UNC 4-40

Layout of contacts (see sheet 3)

Contacts

P :Pin

Termination type

5 Right angle/Europe standard

Plating

00 Right angle 500 matings/unmatings

43 Right angle 500 matings/unmatings
for harsh environment

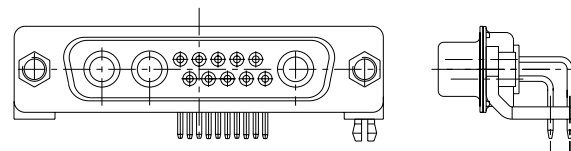
PCB accessories definition(see sheet 2)

blank :Plastic brackets

C :Without brackets

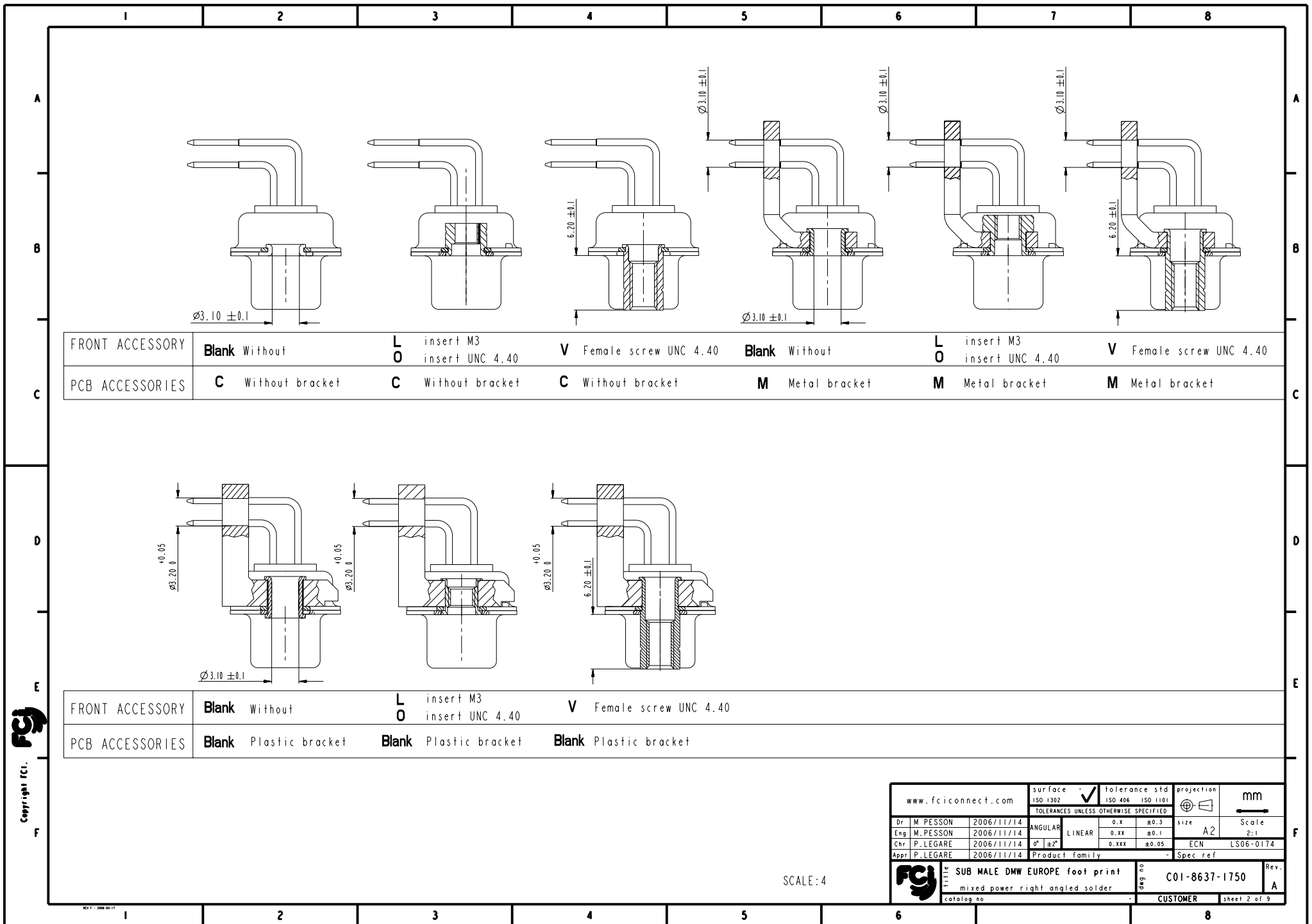
M :Metal brackets

N :Obligatory indication for HE 507



13W3 FOR EXAMPLE

| | | | | | | | | | | |
|--------------------------------|-----------|------------|-----------------------|---------------------------------------|------------|----------------|-----------|--------------|------------|----|
| www.fciconnect.com | | | | surface | ISO 1302 | tolerance std | ISO 406 | ISO 1101 | projection | mm |
| | | | | TOLERANCES UNLESS OTHERWISE SPECIFIED | | | | | | |
| Dr | M. PESSON | 2006/11/14 | ANGULAR | 0.X | ± 0.3 | size | A2 | Scale | 2:1 | |
| Eng | M. PESSON | 2006/11/14 | LINEAR | 0.XX | ± 0.1 | ECN | LS06-0174 | | | |
| Chr | P. LEGARE | 2006/11/14 | $0^\circ \pm 2^\circ$ | 0.XXX | ± 0.05 | Product family | - | Spec. ref | | |
| Appr | P. LEGARE | 2006/11/14 | | | | | | | | |
| SUB MALE DMW EUROPE foot print | | | | mixed power right angled solder | | | | Rev. | A | |
| catalog no | | | | C01-8637-1750 | | | | CUSTOMER | | |
| | | | | | | | | sheet 1 of 9 | | |



shell size
i xWx

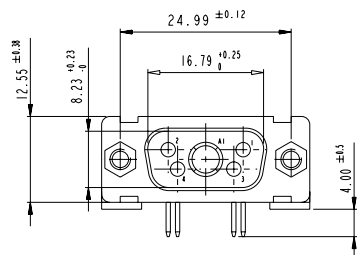
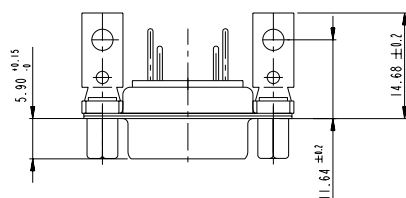
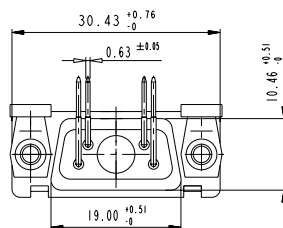
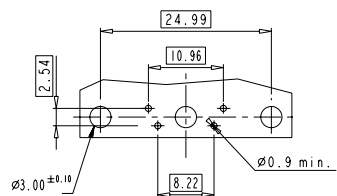
E 5W1
A 11W1
A 7W2
B 21W1
B 17W2
B 13W3
B 9W4
C 25W3
C 21WA4
C 27W2
D 47W1
D 24W7
D 36W4

| PART NUMBER | MATINGS/ UNMATINGS | FRONT ACCESSORY | PCB ACCESSORIES |
|---------------|-----------------------|-----------------------|--------------------|
| D*MxWxP500CN | 500 | without | without |
| D*MLxWxP500CN | 500 | insert M3 | without |
| D*MOxWxP500CN | 500 | insert UNC 4.40 | without |
| D*MVxWxP500CN | 500 | female screw UNC 4.40 | without |
| D*MxWxP500MN | 500 | without | metal bracket |
| D*MLxWxP500MN | 500 | insert M3 | metal bracket |
| D*MOxWxP500MN | 500 | insert UNC 4.40 | metal bracket |
| D*MVxWxP500MN | 500 | female screw UNC 4.40 | metal bracket |
| D*MxWxP500N | 500 | without | plastic bracket |
| D*MLxWxP500N | 500 | insert M3 | plastic bracket |
| D*MOxWxP500N | 500 | insert UNC 4.40 | plastic bracket |
| D*MVxWxP500N | 500 | female screw UNC 4.40 | plastic bracket |

| PART NUMBER | MATINGS/ UNMATINGS | FRONT ACCESSORY | PCB ACCESSORIES |
|---------------|-----------------------|-----------------------|--------------------|
| D*MxWxP543CN | 500 | without | without |
| D*MLxWxP543CN | 500 | insert M3 | without |
| D*MOxWxP543CN | 500 | insert UNC 4.40 | without |
| D*MVxWxP543CN | 500 | female screw UNC 4.40 | without |
| D*MxWxP543MN | 500 | without | metal bracket |
| D*MLxWxP543MN | 500 | insert M3 | metal bracket |
| D*MOxWxP543MN | 500 | insert UNC 4.40 | metal bracket |
| D*MVxWxP543MN | 500 | female screw UNC 4.40 | metal bracket |
| D*MxWxP543N | 500 | without | plastic bracket |
| D*MLxWxP543N | 500 | insert M3 | plastic bracket |
| D*MOxWxP543N | 500 | insert UNC 4.40 | plastic bracket |
| D*MVxWxP543N | 500 | female screw UNC 4.40 | plastic bracket |

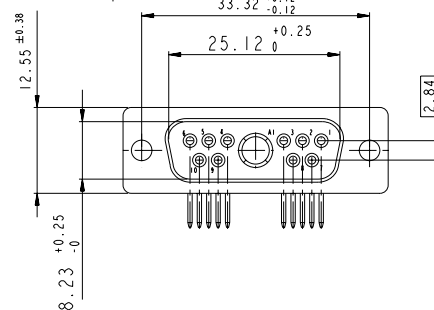
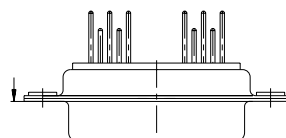
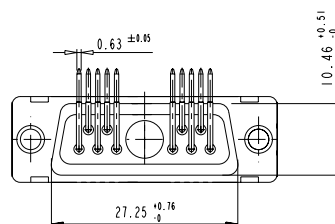
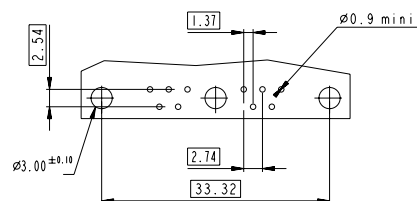
| | | | | | | | |
|--------------------|-----------|---------------------------------------|----------------|-----------------------------------|----------|------------------|-----------|
| www.fciconnect.com | | surface - ISO 1302 | | tolerance std ISO 406 ISO 1101 | | projection mm | |
| | | TOLERANCES UNLESS OTHERWISE SPECIFIED | | | | | |
| Dr | M. PESSON | 2006/11/14 | ANGULAR | 0.X | ±0.3 | size | A2 |
| Eng | M. PESSON | 2006/11/14 | LINEAR | 0.XX | ±0.1 | Scale | 2:1 |
| Chr | P. LEGARE | 2006/11/14 | 0° ±2° | 0.XXX | ±0.05 | ECN | LS06-0174 |
| Appr | P. LEGARE | 2006/11/14 | Product family | | Spec ref | | |
| FCI | | SUB MALE DMW EUROPE foot print | | deg no | | C01-8637-1750 | |
| | | mixed power right angled solder | | catalog no | | CUSTOMER | |
| | | | | | | sheet 3 of 9 | |

LAYOUT AND CONNECTOR DIMENSIONS

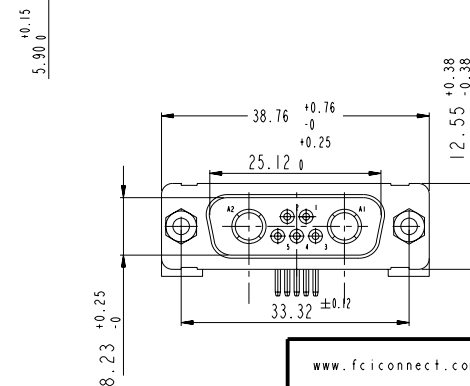
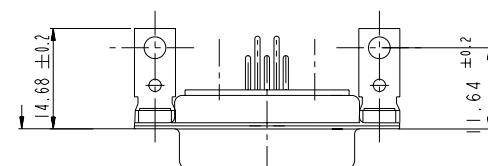
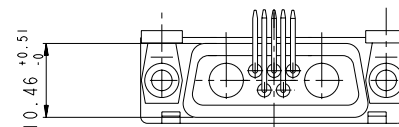
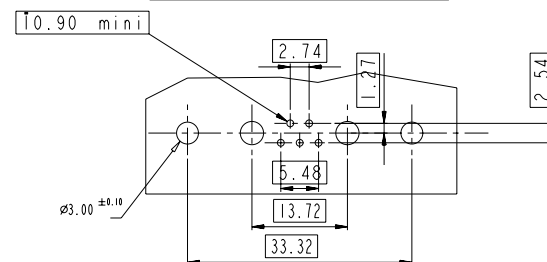


Floating signal contacts

LAYOUT AND CONNECTOR DIMENSIONS

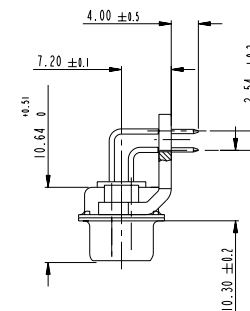


LAYOUT AND CONNECTOR DIMENSIONS

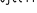




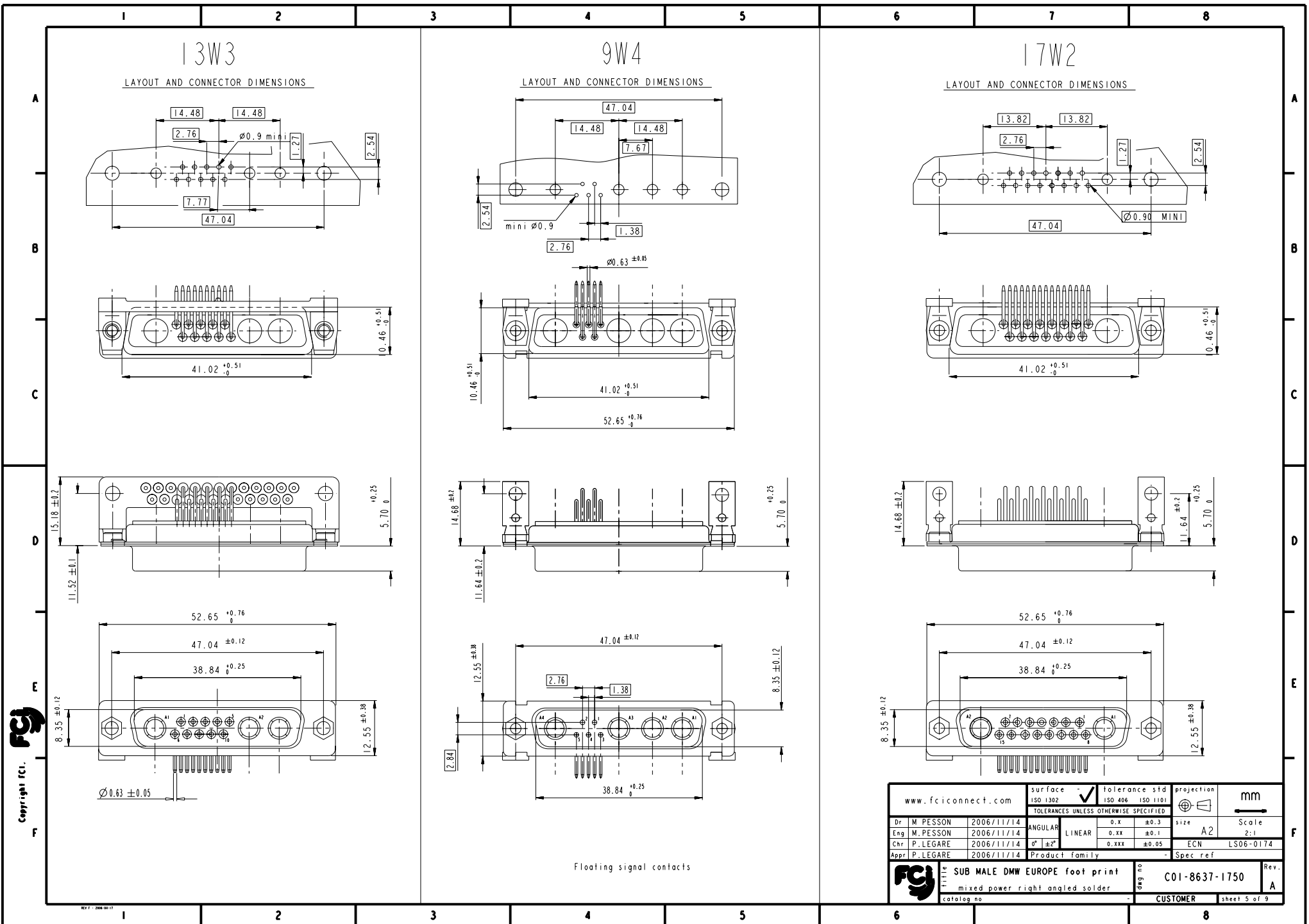
SIDE VIEW FOR ALL LAYOUTS

E - A - B - C

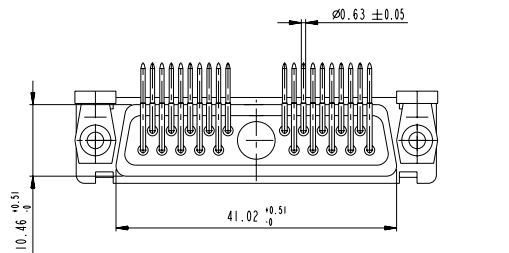


Copyright FCI.

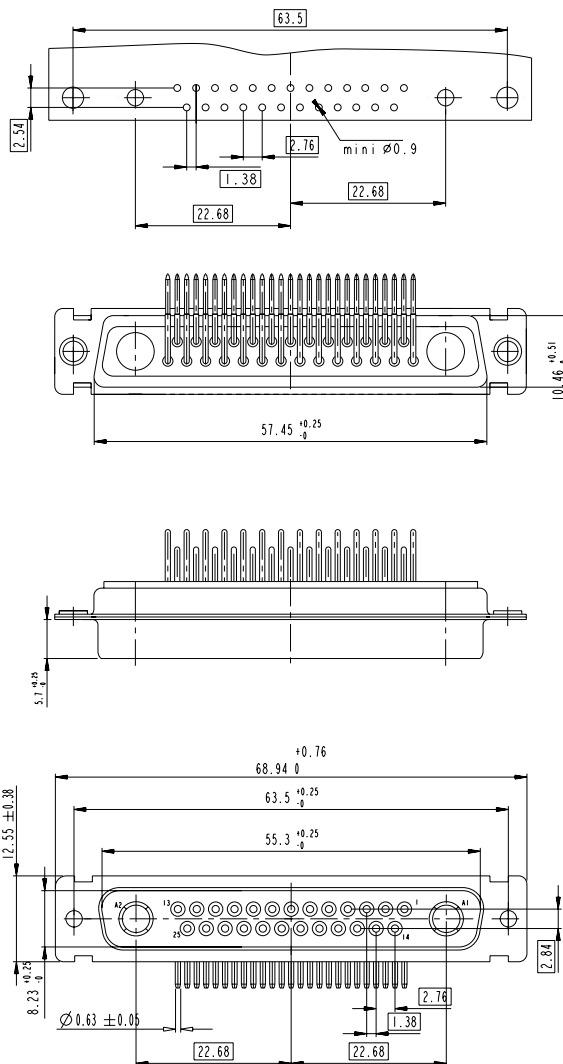
| | | | | | | | | | | |
|---|-----------|------------|--|--------|-------|---|-----------------------|---|-------|--|
| www.fciconnect.com | | | surface <input checked="" type="checkbox"/> tolerance std ISO 1302 ISO 406 ISO 1101 | | | projection  | | mm  | | |
| TOLERANCES UNLESS OTHERWISE SPECIFIED | | | | | | | | | | |
| Dr | M. PESSON | 2006/11/14 | ANGULAR | LINEAR | 0.x | ±0.3 | size | A2 | Scale | |
| Eng | M. PESSON | 2006/11/14 | | | 0.XX | ±0.1 | | | 2:1 | |
| Chr | P. LÉGARÉ | 2006/11/14 | 0° ±2° | | 0.XXX | ±0.05 | ECN | LS06-0174 | | |
| Appr | P. LÉGARÉ | 2006/11/14 | Product family | | | | - | Spec ref | | |
|  | | | title SUB MALE DMW EUROPE foot print mixed power right angled solder | | | | part no C01-8637-1750 | | Rev A | |
| catalog no | | | CUSTOMER | | | | sheet 4 of 9 | | | |



LAYOUT AND CONNECTOR DIMENSIONS

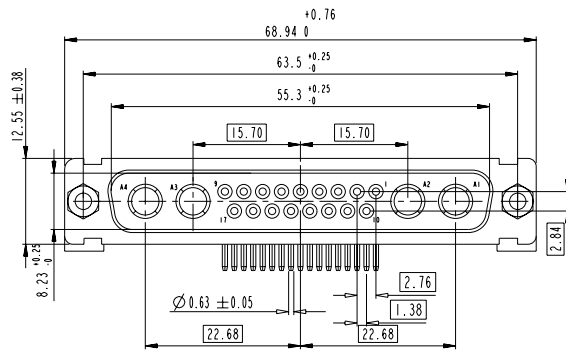
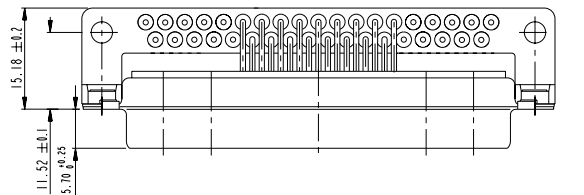
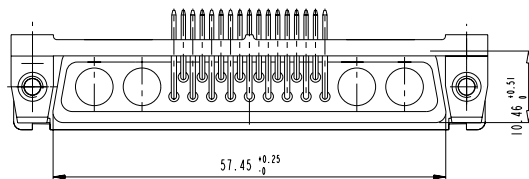
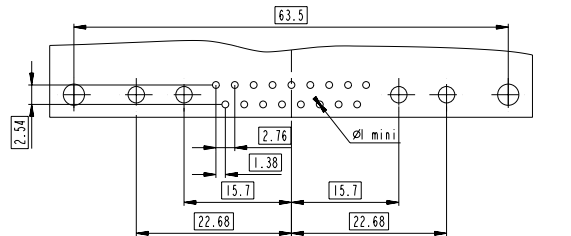


LAYOUT AND CONNECTOR DIMENSIONS

Printed: Apr 21, 2009

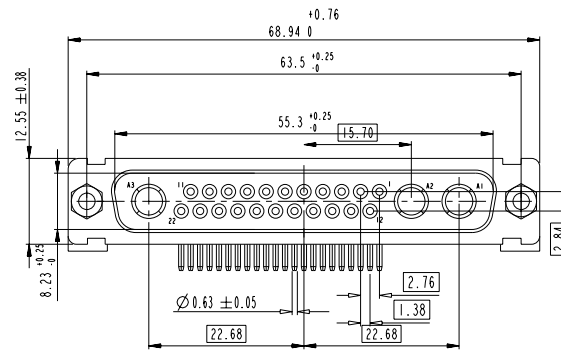
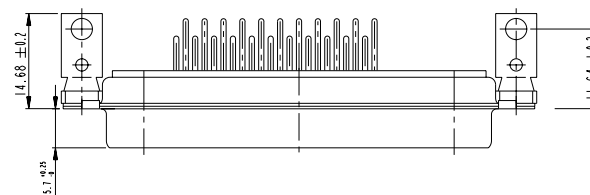
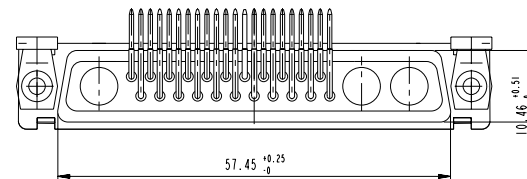
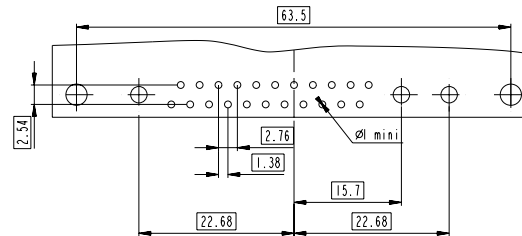
21WA4

LAYOUT AND CONNECTOR DIMENSIONS


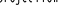




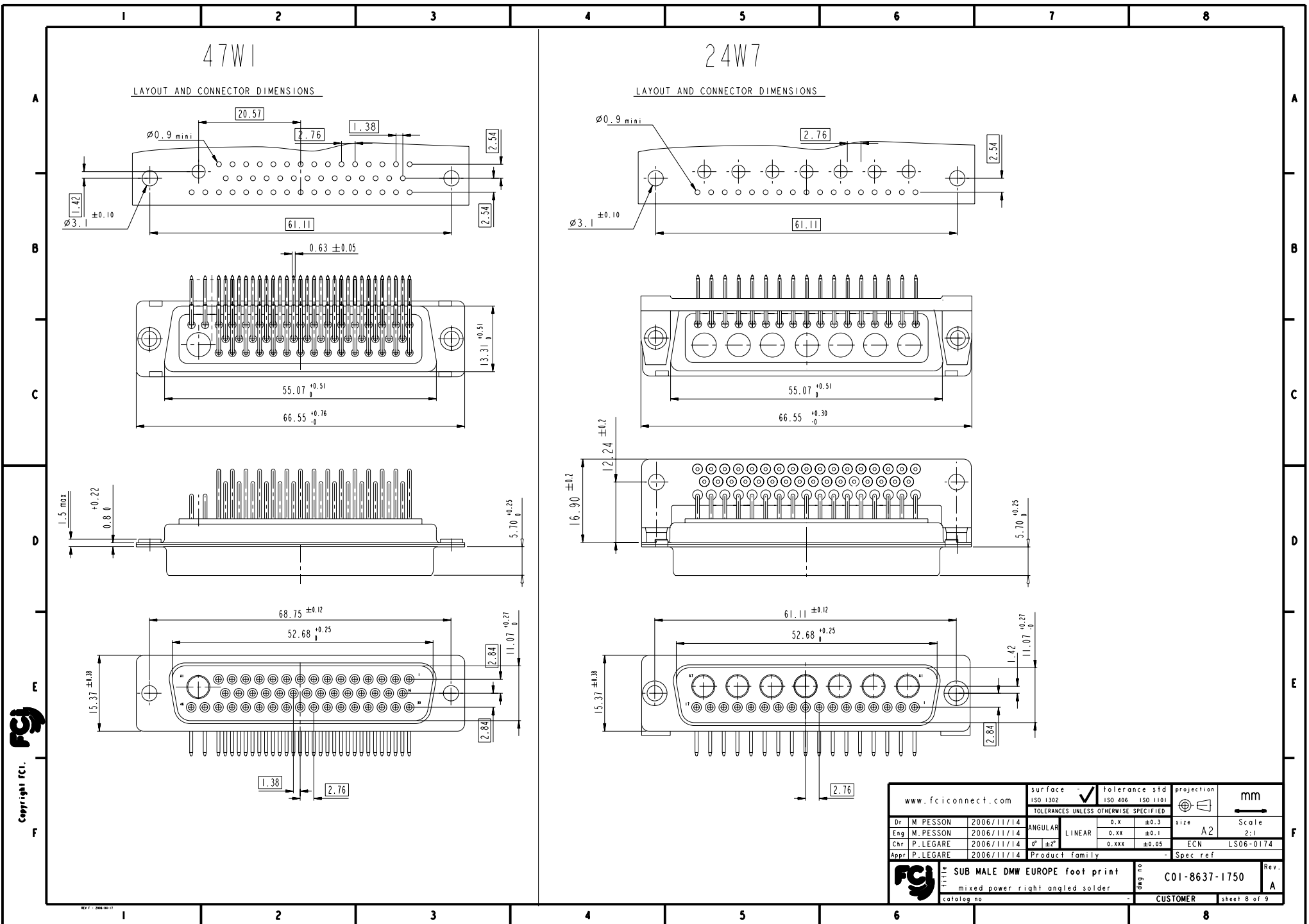
25W3

LAYOUT AND CONNECTOR DIMENSIONS

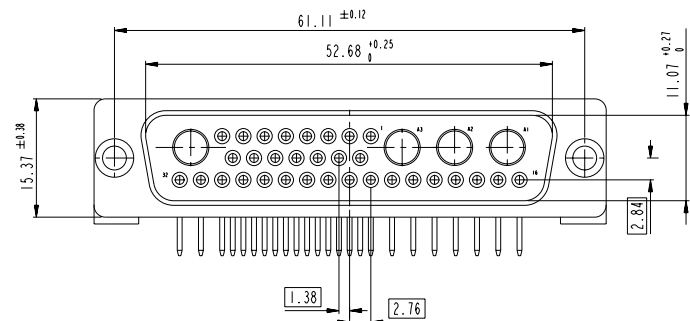
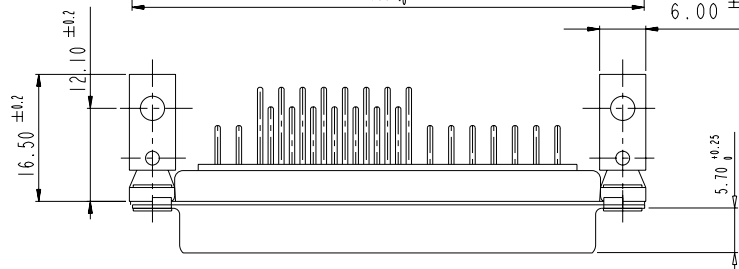
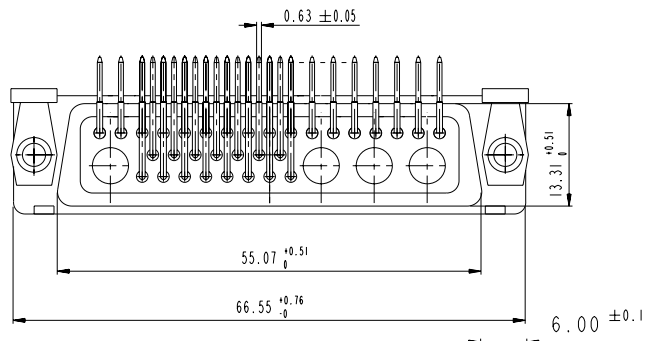
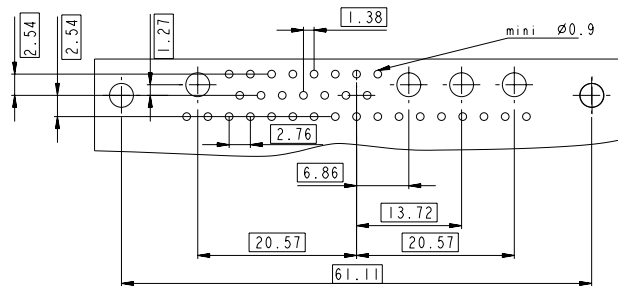


Copyright fci.

| | | | | | | | | |
|---|-----------|------------|---|--------|--|---------------|--|--------------|
| www.fciconnect.com | | | surface -  tolerance std | | projection  | | mm  | |
| | | | ISO 1302 | | ISO 406 ISO 1101 | | | |
| TOLERANCES UNLESS OTHERWISE SPECIFIED | | | | | | | | |
| Dr | M. PESSON | 2006/11/14 | ANGULAR | LINEAR | 0.X | ±0.3 | size A2 | Scale 2:1 |
| Eng | M. PESSON | 2006/11/14 | | | 0.XX | ±0.1 | | |
| Chr | P. LEGARE | 2006/11/14 | 0° ±2° | | 0.XXX | ±0.05 | ECN | LS06-0174 |
| Appr | P. LEGARE | 2006/11/14 | Product family | | | - Spec ref | | |
|  | | | SUB MALE DMW EUROPE foot print | | | C01-8637-1750 | | Rev. A |
| | | | mixed power right angled solder | | | | | |
| catalog no | | | - | | | CUSTOMER | | sheet 7 of 9 |

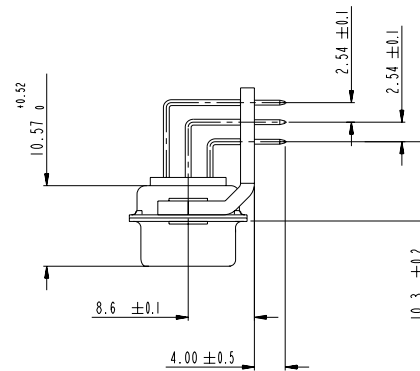


LAYOUT AND CONNECTOR DIMENSIONS






SIDE VIEW FOR ALL LAYOUTS

C



Copyright FCI.

| | | | | | | | | |
|---|----------|------------|--|--------|--|---------------|--|--------------|
| www.fciconnect.com | | | surface - <input checked="" type="checkbox"/> tolerance std ISO 1302 ISO 406 ISO 1101 | | projection  | | mm  | |
| | | | TOLERANCES UNLESS OTHERWISE SPECIFIED | | | | | |
| Dr | M.PESSON | 2006/11/14 | ANGULAR | LINEAR | 0.X ±0.3 | size | A2 | Scale 2:1 |
| Eng | M.PESSON | 2006/11/14 | | | 0.XX ±0.1 | | | |
| Chr | P.LEGARE | 2006/11/14 | 0° ±2° | | 0.XXX ±0.05 | ECN | LS06-0174 | |
| Appr | P.LEGARE | 2006/11/14 | Product family | | | - Spec ref | | |
|  | | | SUD MALL DOW EUROPE foot print | | | C01-8637-1750 | | Rev. A |
| | | | mixed power right angled solder | | | | | |
| catalog no | | | - | | | CUSTOMER | | sheet 9 of 9 |

Mouser Electronics

Authorized Distributor

Click to View Pricing, Inventory, Delivery & Lifecycle Information:

[FCI / Amphenol:](#)

[DBM13W3P500CN](#) [DAM7W2P500N](#) [DBM13W3P500N](#) [DBM9W4P500N](#) [DCM27W2P500MN](#) [DBM13W3P500MN](#)
[DDM24W7P500N](#) [DAM11W1P500CN](#) [DDMO24W7P500MN](#) [DCM25W3P500MN](#)