

REFERENCE SPECIFICATIONS

-NFC 93425 (in compliance with HE 501)

PHYSICAL CHARACTERISTICS

-INSULATOR MATERIAL: THERMOPLASTIC UL94V0

-CONTACT MATERIAL: BRASS
GOLD OVER NICKEL

-ACCESSORIES: BRASS,cadmium plated yellow passivation

-SHELLS: STEEL,cadmium plated yellow passivation

ELECTRICAL CHARACTERISTICS

-NOMINAL CURRENT: 7.5A

-CONTACT RESISTANCE: <= 7.3 m ohms

-CONTACT/CONTACT : >=1000 V

-CONTACT/GROUND : >=1200 V

-INSULATION RESISTANCE: >=5000 MOhms

ENVIRONMENTAL CHARACTERISTICS

- CLIMATIC CATEGORY: 55/125/56

TEMPERATURE RANGE -55°C TO +125°C

DAMP HEAT STEADY STATE 56 DAYS

SALT SPRAY 48 HOURS

MECHANICAL CHARACTERISTICS

- RETENTION AGAINST TORQUE: - Threaded insert: 0.7 N.m minimum

- Female screw : 0.5 N.m minimum

Series

DBML25P043

Shell size: E A B C D
see sheet 2

Front accessory definition
see sheet 2

Blank :without accessory
F :floating mounting
L :threaded insert M3
O :threaded insert UNC 4-40
V :female screw UNC 4-40

Contact number (see sheet 2)

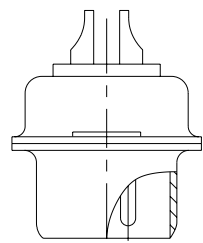
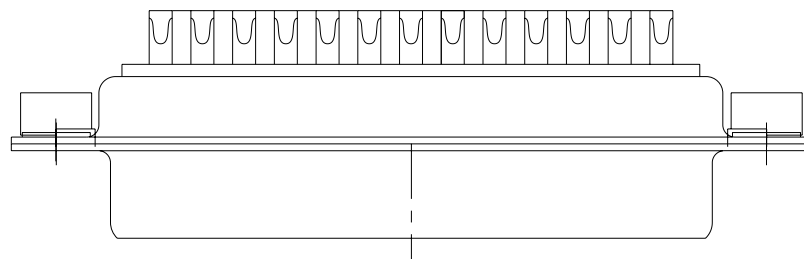
9,15,25,37,50

Contacts

P :Pin

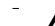
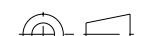


Plating

Blank :solder bucket 500 matings/unmatings
043 :solder bucket 500 matings/unmatings
for harsh environment

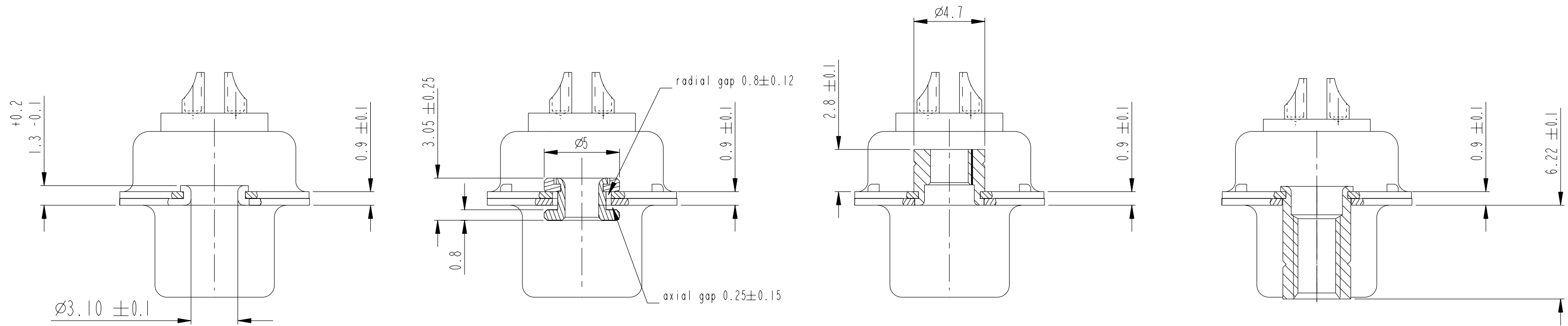


25 WAY for Example

rev	ecn no	dr	date
A	LS06-0174	MPE	2006/11/14
B	LS07-0273	MPE	2007/10/30
C	LS08-0044	MPE	2008/02/04
-	-	-	-
-	-	-	-
-	-	-	-
-	-	-	-

www.fciconnect.com			surface - 		tolerance std ISO 1302 ISO 406 ISO 1101		projection 				
			TOLERANCES UNLESS OTHERWISE SPECIFIED								
Dr	M PESSON	2006/11/14	ANGULAR	LINEAR	0.X		±0.3		size A2	Scale 2:1	
Eng	P LEGARE	2006/11/14			0.XX		±0.1				
Chr	P LEGARE	2006/11/14			0.XXX		±0.05				
Appr	P LEGARE	2006/11/14	0° ±2°				ECN		LS08-0044		
			Product family					-		Spec ref	
			title SUB MALE DM HE501 series with solder bucket				dwg no C01-8637-1737			Rev. C	
			catalog no				-		CUSTOMER		sheet 1 of 4

A
B
C
D
E
F



FRONT ACCESSORY	Blank without	F floating mounting	L insert M3 O insert UNC 4.40	V female screw UNC 4.40
-----------------	---------------	---------------------	----------------------------------	-------------------------

PART NUMBER	FRONT ACCESSORY
D*MxxP	without
D*MFxxP	floating mounting
D*MLxxP	insert M3
D*MOxxP	insert UNC 4.40
D*MVxxP	female screw UNC 4.40




PART NUMBER	FRONT ACCESSORY
D*MxxP043	without
D*MFxxP043	floating mounting
D*MLxxP043	insert M3
D*MOxxP043	insert UNC 4.40
D*MVxxP043	female screw UNC 4.40

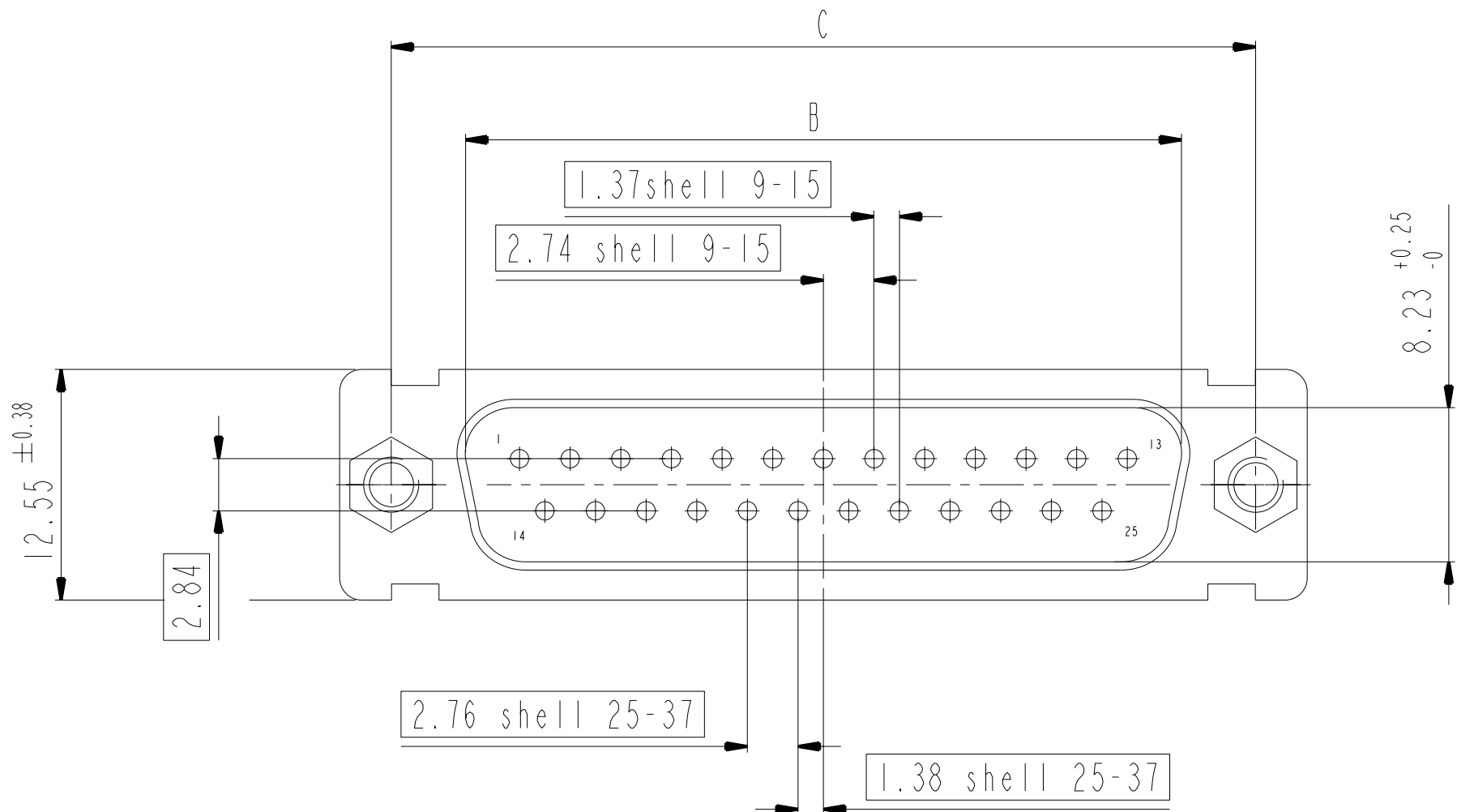
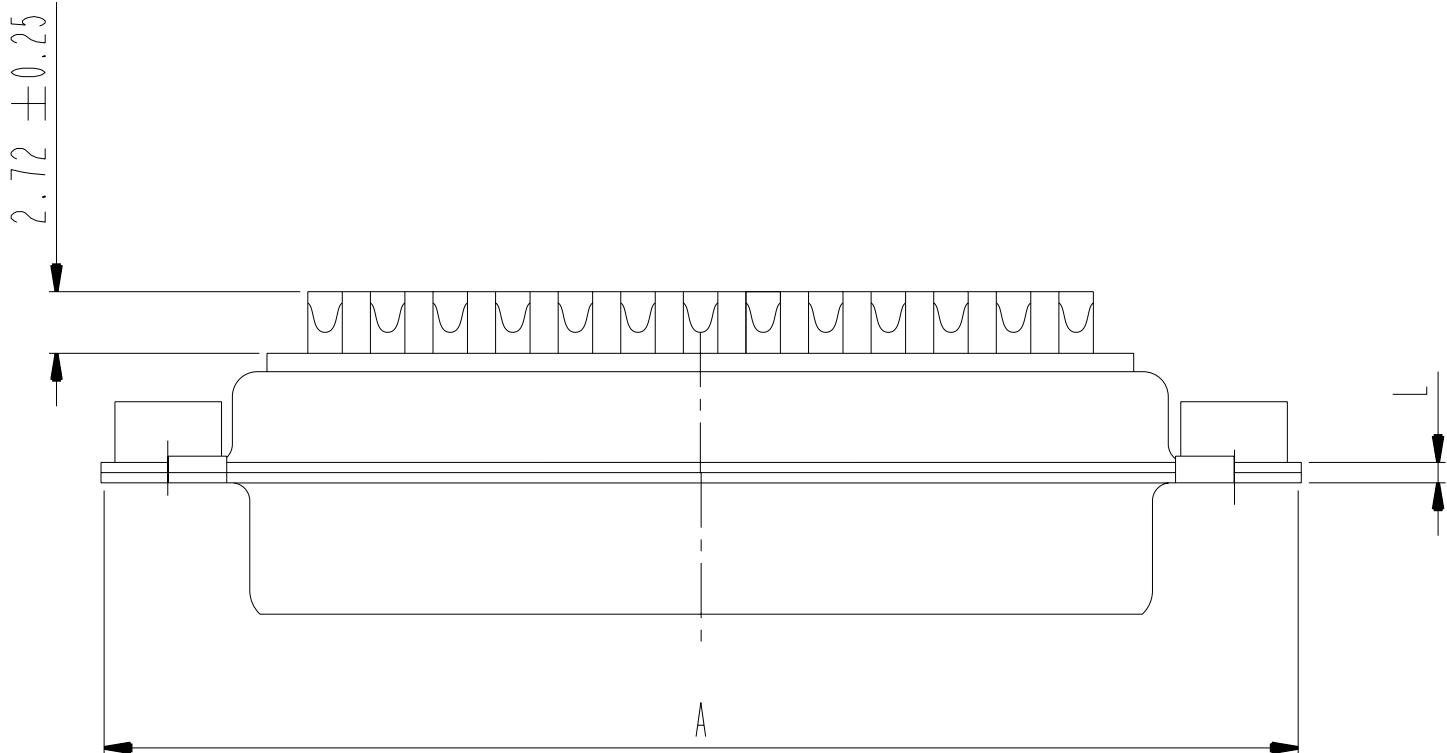
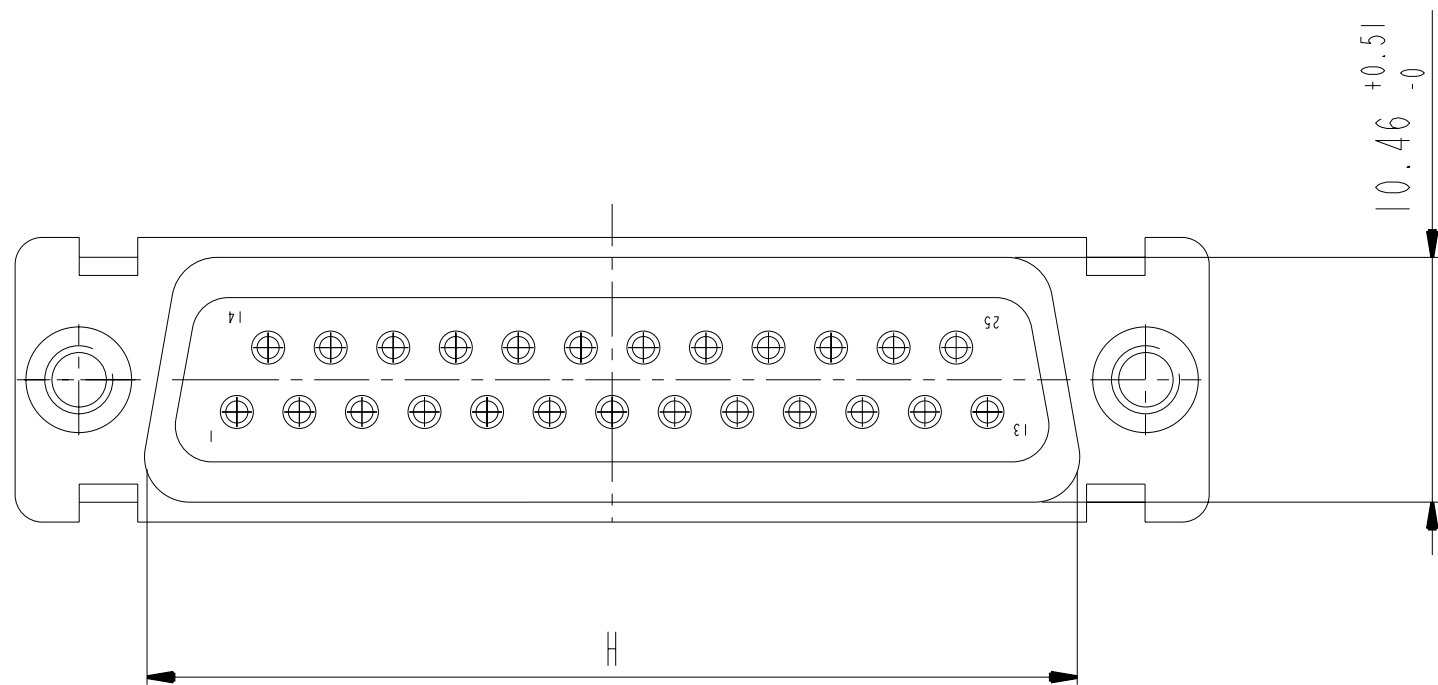
shell size	Contact number
*	XX
E	09
A	15
B	25
C	37
D	50

CROSS REFERENCES HE501 and FCI

HE501 P/N	FCI P/N	FRONT ACCESSORY
HE501NxxAS	D*MxxP	without
HE501FxxAS	D*MFxxP	floating mounting

SCALE: 4

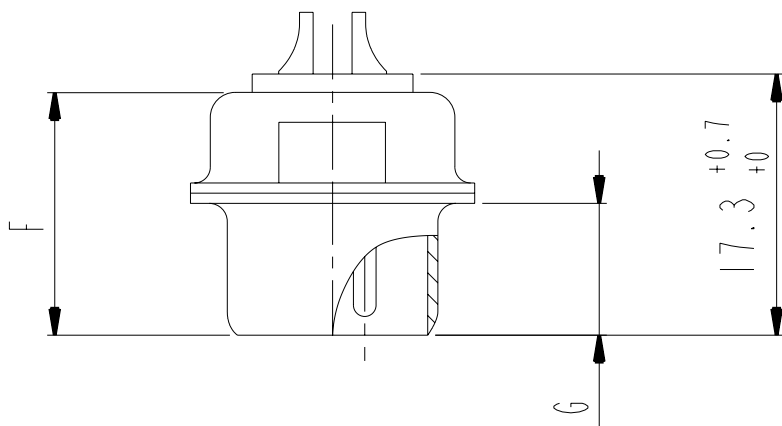
www.fciconnect.com			surface - <input checked="" type="checkbox"/> ISO 1302		tolerance std ISO 406 ISO 1101		projection 		mm 		
			TOLERANCES UNLESS OTHERWISE SPECIFIED								
Dr	M PESSON	2006/11/14	ANGULAR	LINEAR	0.X ±0.3		size A2	Scale 2:1			
Eng	P LEGARE	2006/11/14			0.XX ±0.1						
Chr	P LEGARE	2006/11/14			0.XXX ±0.05			ECN LS08-0044			
Appr	P LEGARE	2006/11/14	Product family				-		Spec ref		
			title SUB MALE DM HE501 series					dwg no C01-8637-1737		Rev. C	
			with solder bucket								
catalog no			-		CUSTOMER				sheet 2 of 4		







DIMENSIONS FOR SHELL E,A,B,C

Dimensions are in millimeters

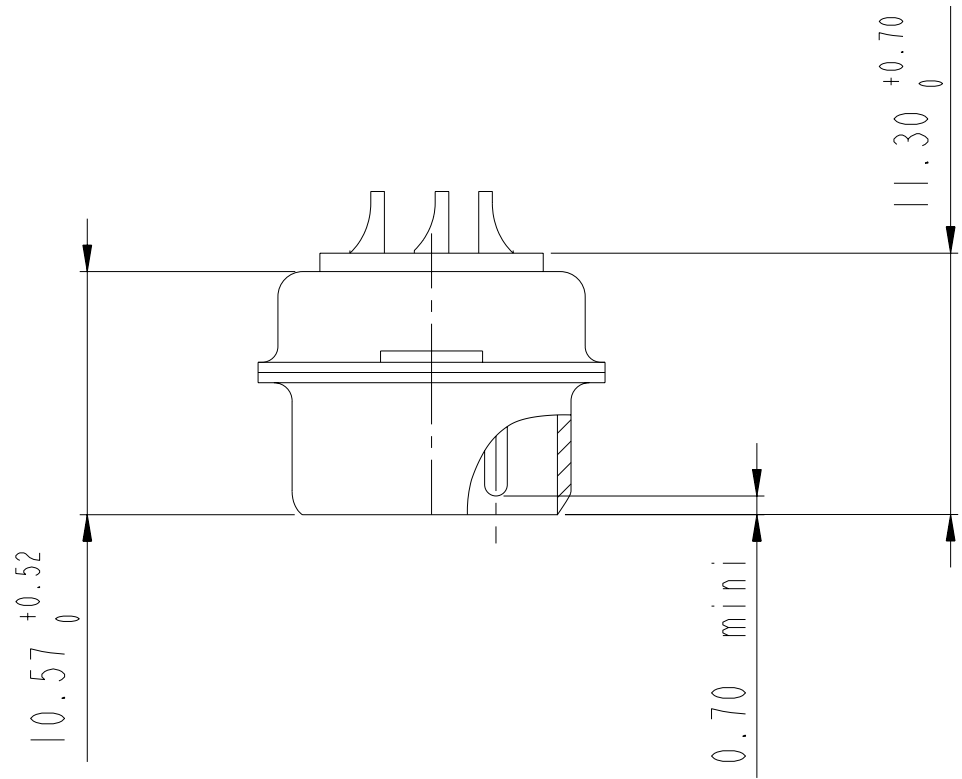
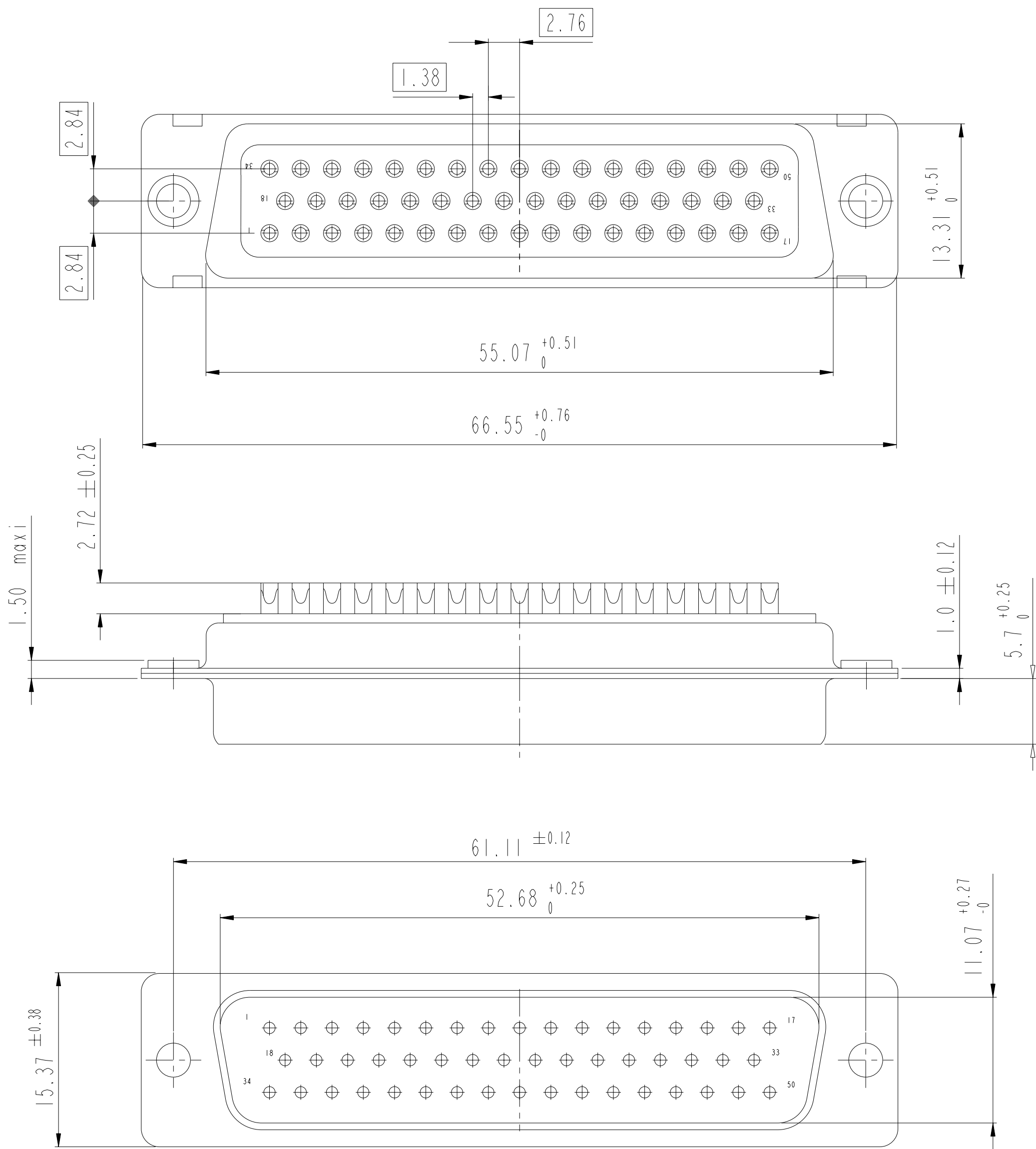
Shell size	Number of contacts	A ^{+0.76 -0}	B ^{+0.25 -0}	C ^{±0.12}	F ^{+0.57 -0}	G ^{+0.25 -0}	H ^{+0.51 -0}	L ^{+0.22 -0}
E	09	30.43	16.79	24.99	10.47	5.9 ^{+0.15 -0}	19.02	0.80
A	15	38.76	25.12	33.32	10.47	5.9 ^{+0.15 -0}	27.25	0.80
B	25	52.65	38.84	47.04	10.43	5.7 ^{+0.25 -0}	41.02	0.80
C	37	68.94	55.30	63.50	10.56	5.7 ^{+0.25 -0}	57.45	0.90



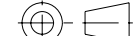


scale 3

www.fciconnect.com			surface - 		tolerance std		projection		mm							
			ISO 1302		ISO 406 ISO 1101											
			TOLERANCES UNLESS		OTHERWISE SPECIFIED											
Dr	M PESSON	2006/11/14	ANGULAR	LINEAR	0.X ±0.3		size	A2	Scale							
Eng	P LEGARE	2006/11/14			0.XX ±0.1				2:1							
Chr	P LEGARE	2006/11/14			0.XXX ±0.05											
Appr	P LEGARE	2006/11/14	0° ±2°				ECN		LS08-0044							
			Product family		-		Spec ref									
			title		SUB MALE DM HE501 series				dwg no		C01-8637-1737		Rev.			
			with solder bucket										C			
			catalog no		-				CUSTOMER		sheet 3 of 4					

DIMENSIONS FOR SHELL SIZE D (50 CONTACTS)



scale 3

www.fciconnect.com			surface - <input checked="" type="checkbox"/> ISO 1302		tolerance std ISO 406 ISO 1101		projection 		mm 	
TOLERANCES UNLESS OTHERWISE SPECIFIED										
Dr	M PESSON	2006/11/14	ANGULAR	LINEAR	0.X ±0.3		size A2	Scale 2:1		
Eng	P LEGARE	2006/11/14			0.XX ±0.1					
Chr	P LEGARE	2006/11/14			0.XXX ±0.05					
Appr	P LEGARE	2006/11/14	0° ±2°				ECN		LS08-0044	
			Product family				-		Spec ref	
			SUB MALE DM HE501 series				dwg no C01-8637-1737		Rev. C	
			with solder bucket							
			catalog no				CUSTOMER			

Mouser Electronics

Authorized Distributor

Click to View Pricing, Inventory, Delivery & Lifecycle Information:

[FCI / Amphenol:](#)

[DAM15P043](#) [DBMF25P043](#) [DCM37P043](#) [DDM50P](#) [DEM09P](#) [DEM09P043](#) [DAMF15P](#) [DAML15P](#) [DBMF25P](#)
[DCMF37P](#) [DDMF50P](#) [DEMF09P](#) [DAMO15P043](#) [DCMF37P043](#) [DEMO09P](#) [DBML25P043](#)