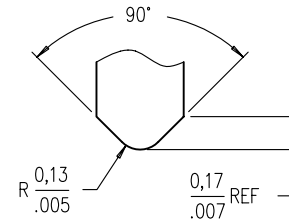
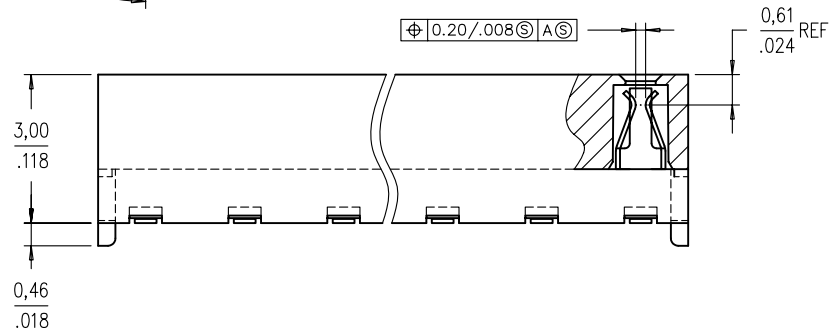
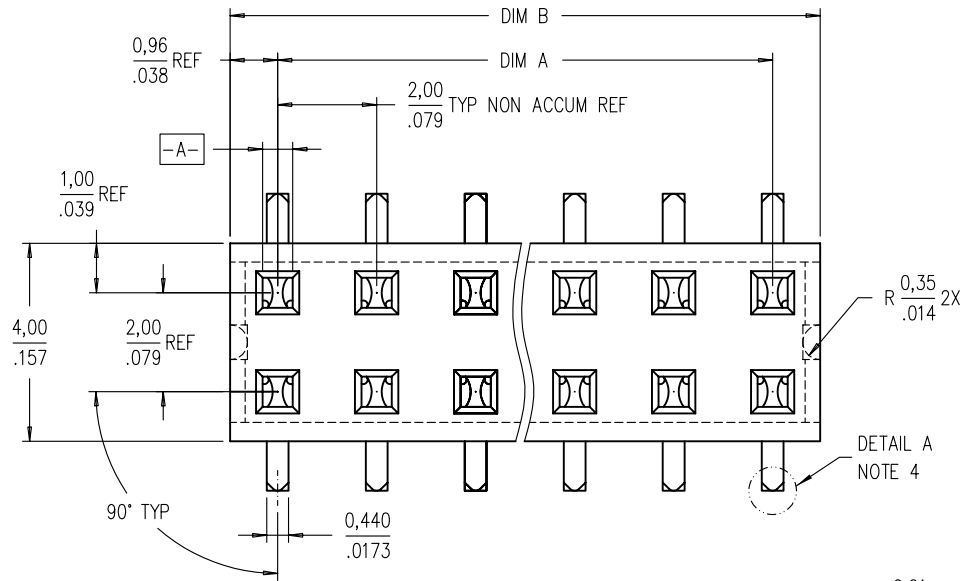


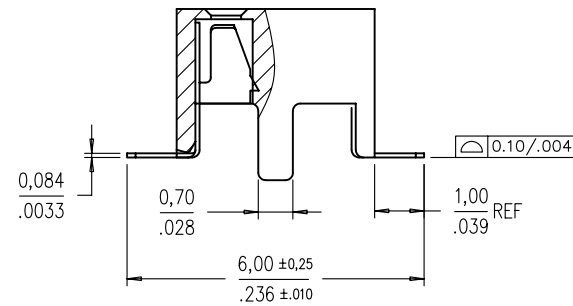
Tous droits strictement reserves. Reproduction ou communication a des tiers  
interdite sous quelque forme que ce soit sans autorisation ecrite du proprietaire.  
Propriete de c FCI. Droits de reproduction FCI.

FCI

All rights strictly reserved. Reproduction or issue to third parties in any  
form whatever is not permitted without written authority from the proprietor.  
Property of FCI. Copyright FCI.



DETAIL A



CONFIDENTIAL

mat'l. code				tolerances unless otherwise specified		CUSTOMER COPY	title
ltr	ecn no	dr	date	linear	angular		
K	S40325	BSL	12/20/94		X.X±0.3/.XX±.01	projection	LOW PROFILE VCC SMT 3.00 ASSY WITH 0.46/.018 LOCATING FEATURES
L	S80115	BSL	5/14/98		X.XX±0.13/.XXX±.005		
M	V94400	BSL	12/1/99		X.XXX±0.051/.XXX±.0020	MM/INCH	product family LPVCC
N	S05-0064	KBM	3/1/05		ANGLES ±2°		
				dr	BS LOW	1/6/00	size
				enrg	BS LOW	1/6/00	
				chr	KB MAH	3/1/05	A
				appd	JOEY NG	3/1/05	
				scale		10:1	92911
sheet index	revision	N	N				code
	sheet	1	2				

cage code  
22526

STATUS: Released

Printed: Feb 01, 2007

ACAD

PDM: Rev:N

PRODUCT NO	POSITIONS	DIM. A	DIM. B
92911-X04	2 X 2	2,00/.079	3,92/.154
-X06	2 X 3	4,00/.158	5,92/.233
-X08	2 X 4	6,00/.236	7,92/.312
-X10	2 X 5	8,00/.315	9,92/.391
-X12	2 X 6	10,00/.394	11,92/.469
-X14	2 X 7	12,00/.472	13,92/.548
-X16	2 X 8	14,00/.551	15,92/.627
-X18	2 X 9	16,00/.630	17,92/.706
-X20	2 X 10	18,00/.709	19,92/.784
-X22	2 X 11	20,00/.787	21,92/.863
-X24	2 X 12	22,00/.866	23,92/.942
-X26	2 X 13	24,00/.945	25,92/1,020
-X28	2 X 14	26,00/1,024	27,92/1,099
-X30	2 X 15	28,00/1,102	29,92/1,178

#### NOTES :

- HOUSING MAT'L : HIGH TEMP PLASTIC.
- TERMINAL MAT'L : BeCu.
- TERMINAL RETENTION 0,5 Kg/1,1 Lbs.
- 'V' CUT OPTIONAL - MANUFACTURING PROCESS OPTION.
- SOLDER TAILS PLATING:
  - SOLDERTAIL OF P/N:92911-XXX IS TIN/LEAD PLATED.
  - SOLDERTAIL OF P/N:92911-XXXLF IS 100% MATTE TIN PLATED.
- PRODUCT DESCRIPTION CODE :  
 XXXXX-X XXLF  
 LEAD FREE (5b)(9)  
 TOTAL POSITIONS  
 CONTACT AREA PLATING  
 BASE NUMBER
- PACKAGING :
  - XXXXX-XXX --- STD PACKAGING IN TUBE.
  - XXXXX-XXXTR --- TAPE AND REEL (CONDUCTIVE)  
PACKAGING WITH PICK-UP CAP (SEE FIG 1).
  - XXXXX-XXXTRN --- TAPE AND REEL (CONDUCTIVE)  
PACKAGING WITHOUT PICK-UP CAP.
  - XXXXX-XXXCR --- TAPE AND REEL (NON-CONDUCTIVE)  
PACKAGING WITH PICK-UP CAP (SEE FIG 1).
  - XXXXX-XXXCRN --- TAPE AND REEL (NON-CONDUCTIVE)  
PACKAGING WITHOUT PICK-UP CAP.
- THE HOUSING WILL WITHSTAND EXPOSURE TO 255° C PEAK TEMPERATURE FOR 10 SECONDS IN A CONVECTION, INFRA-RED OR VAPOR PHASE REFLOW OVEN.
- THIS PRODUCT MEETS EUROPEAN UNION DIRECTIVES AND OTHER COUNTRY REGULATIONS AS DESCRIBED IN GS-22-008.

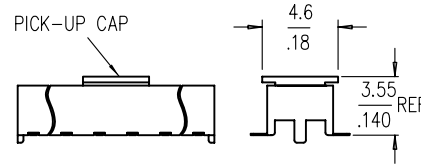
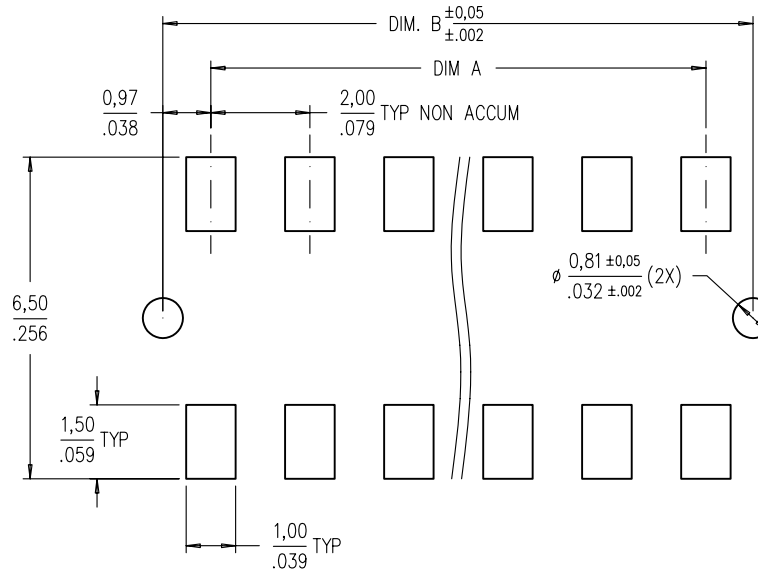


FIG. 1  
NOTE 7 (b) & (d)



RECOMMENDED PAD LAYOUT

#### PLATING OPTIONS OVER CONTACT AREA

- 0 = 0,2u/8u" Au
- 1 = 0,76u/30u" Au
- 3 = 0,38u/15u" Au

CONFIDENTIAL

mat'l. code				tolerances unless otherwise specified		CUSTOMER COPY	 www.fciconnect.com
ltr	ecn no	dr	date	linear	angles		
N						projection	title
						MM/INCH	LOW PROFILE VCC SMT 3.00 ASSY WITH 0.46/.018 LOCATING FEATURES
						scale	product family LPVCC
						2:1	code
							size
							dwg no
							92911
							sheet
							2 of 2
sheet index	revision						
	sheet						

cage code  
22526

STATUS: Released

Printed: Feb 01, 2007

ACAD

PDM: Rev:N

# Mouser Electronics

Authorized Distributor

Click to View Pricing, Inventory, Delivery & Lifecycle Information:

[FCI / Amphenol:](#)

[92911-114LF](#) [92911-126LF](#) [92911-130LF](#) [92911-304LF](#) [92911-314LF](#) [92911-316LF](#) [92911-320LF](#) [92911-110LF](#)