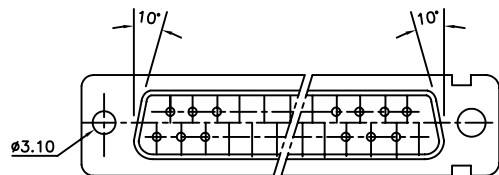


Part No. & Date code printing

TECHNICAL SPECIFICATIONS



VIEW OF MATING FACE

ORDERING INFORMATION

SERIES	D	B	V	25	P	0	64	C	T	X	B	XXX	LF
SHELL SIZE													
E, A, B, C, D													
OPTIONS													
BLANK-STANDARD													
F-FLOAT MOUNTING													
V-FEM, SCREW LOCK HEX, (UNC)													
N-THREADED FEM, SCREW LOCK M3													
L-CLINCH NUT (M3)													
W-RIVETED FEM, SCREW LOCK ROUND UNC													
O-CLINCH NUT (UNC)													
NO. OF CONTACTS													
09, 15, 25, 37, 50													
CONTACTS													
P - PIN													
S - SOCKET													
TERMINATION TYPE													
0 / BLANK - SOLDER BUCKET													
LEAD FREE													
SPECIAL CODES													
INSULATOR COLOUR													
BLANK- NATURAL													
B - BLACK													
DIMPLES													
X-ON MALE CONNECTORS ONLY													
SHELL PLATING													
BLANK-ZINC													
T-STD, TIN over Cu or Zinc Cr 3													
OPTIONS													
BLANK-STANDARD													
H-SHIELDING TERMINATION FINGERS													
G-HARPOON													
M-METAL BRACKET													
C-WITHOUT BRACKET													
CONTACT PLATING													
BLANK-0.2 #Au													
64 - Au FLASH													
65 - 0.75 #Au													
67 - 0.4 #Au													

SHELLS	:	TIN/CADMIUM/ZINC PLATED STEEL
INSULATOR MATERIAL	:	SELF EXTINGUISHING THERMOPLASTIC TO UL CLASS 94 V0
	:	THE HOUSING WILL WITHSTAND EXPOSURE TO 260-265°C
	:	IF WE USE PROTECTIVE ADHESIVE (type Kapton or Teflon)
	:	OR PROTECTIVE METALLIC DEVICE
CONTACTS DIA ON ACTIVE AREA	:	Ø1 MM,
CONTACTS MATERIAL	:	COPPER ALLOY
CONTACT PLATING	:	GOLD OVER NICKEL (ACTIVE ZONE)
	:	TINLEAD OVER NICKEL (TERMINATION ZONE)
FOR LEAD FREE PLATING	:	2 µMIN. MATTE TIN TOP OVER
	:	1.27 µMIN. NICKEL UNDER PLATE (ON TERMINATION ZONE)
OPERATING TEMPERATURE	:	-55°C +125°C
OPERATING CURRENT	:	5 A PER CONTACT
CONTACT RESISTANCE	:	≤10m Ω
INSULATION RESISTANCE	:	≥5000M Ω
MAXIMUM VOLTAGE	:	1000 V _{r.m.s}
MECHANICAL ENDURANCE	:	200 MATINGS.
DAMP HEAT	:	21 DAYS,
	:	2
WIRE SIZE	:	0.8 MM ² (AWG 20) MAX.

"This LF product meets European Union Directives and other country regulations as described in GS-22-008"

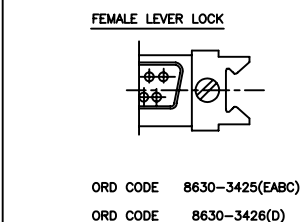
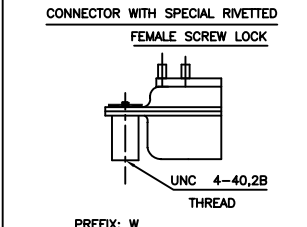
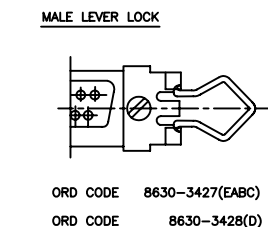
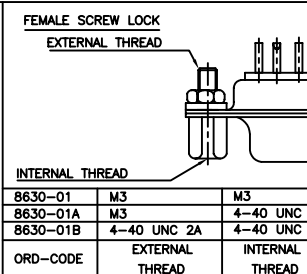
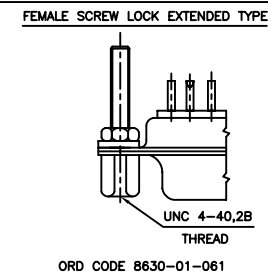
Packaging as per GS-14-920

Housing will withstand exposure to 260°C peak temp for 3.5sec

50	P	66.65	52.68	61.11	11.08	14.99	11.09	5.85	55.07	13.31	1.50	1.0
	S	66.65	52.30	61.11	10.62	14.99	11.21	6.05	55.07	13.31	1.10	0.8
37	P	68.94	55.30	63.50	8.23	12.17	11.09	5.85	57.45	10.46	1.50	1.0
	S	68.94	54.71	63.50	7.77	12.17	11.21	6.05	57.45	10.46	1.10	0.8
25	P	52.65	38.84	47.04	8.23	12.17	11.07	5.85	41.02	10.46	1.10	0.8
	S	52.65	38.25	47.04	7.77	12.17	11.21	6.05	41.02	10.46	1.10	0.8
15	P	38.76	25.12	33.32	8.23	12.17	10.99	5.85	27.25	10.46	1.10	0.8
	S	38.76	24.54	33.32	7.77	12.17	11.21	6.05	27.25	10.46	1.10	0.8
09	P	30.43	16.79	24.99	8.23	12.17	10.99	5.85	19.02	10.46	1.10	0.8
	S	30.43	16.21	24.99	7.77	12.17	11.21	6.05	19.02	10.46	1.10	0.8
SHELL SIZE	A	+0,76 0	+0,25 0	±0,12 C	+0,25 D	+0,76 E	F MAX	+0,15 G	+0,51 H	+0,51 J	±0,2 K	+0,22 L

DIMENSIONS

NOTE:- INSIDE DIMENSIONS OF THE MALE AND OUTSIDE DIMENSIONS OF THE FEMALE CONNECTOR



mat'l. code	surface	tolerance	projection	product family
SEE NOTE 4	ISO 1302	ISO 406 ISO 1101	MM	D-SUB
ltr	ecn no	dr	date	tolerances unless otherwise specified
F	106-0074	GVJ	2006-06-08	angles linear
G	107-0088	RKV	2007-07-14	0°±1°
H	107-0175	MRA	2007-12-17	0°±1°
				dr GEORGE.V.JOSEPH 1999-03-20
				enr GEORGE.V.JOSEPH 1999-03-20
				chr ANISH SALAM 2007-07-14
				appd K.V.SIVADAS 2007-07-14
sheet index	revision sheet	H		
1	1			

Mouser Electronics

Authorized Distributor

Click to View Pricing, Inventory, Delivery & Lifecycle Information:

[Amphenol:](#)

[DAF15P064TXLF](#) [DBF25P064TXLF](#) [DBV25P064TXLF](#) [DBV25S064TLF](#) [DEO09P065TXLF](#) [DBO25S064TLF](#)
[DEV09S065TLF](#) [DCO37P064TXLF](#)