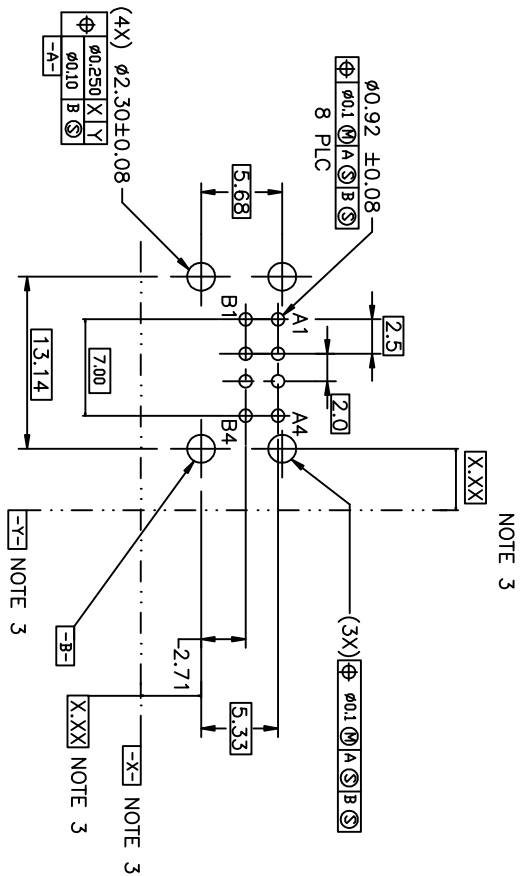
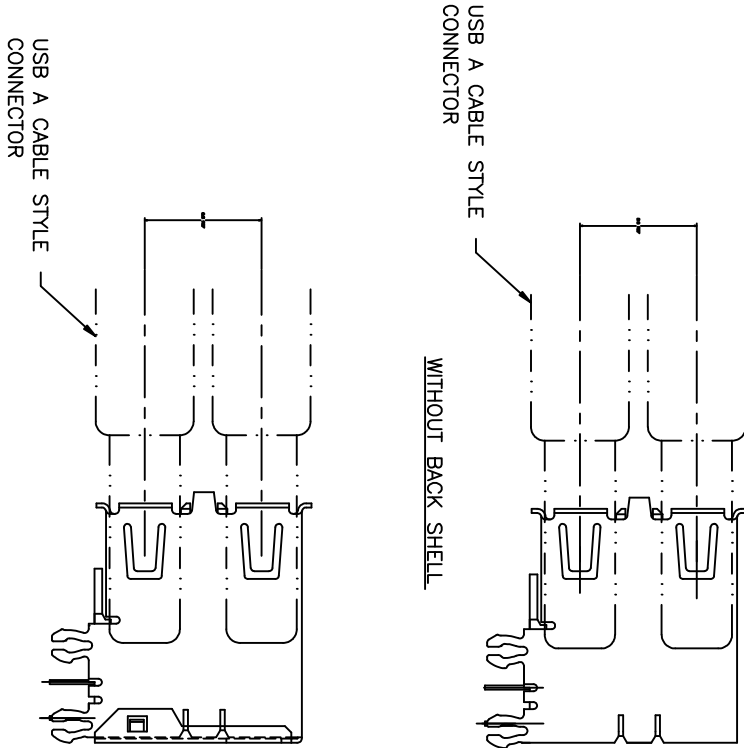


form no. 7530-001-103

1 2

3

4



RECOMMENDED PC DIMENSIONS

NOTES:

1. MATERIAL:
CONTACTS-COPPER ALLOY
SHELL-COPPER ALLOY
HOUSING-UL 94-V-0 RATED THERMOPLASTIC.

2. PLATING:

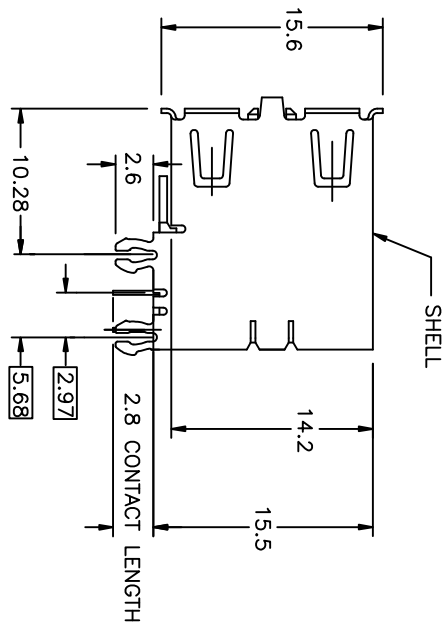
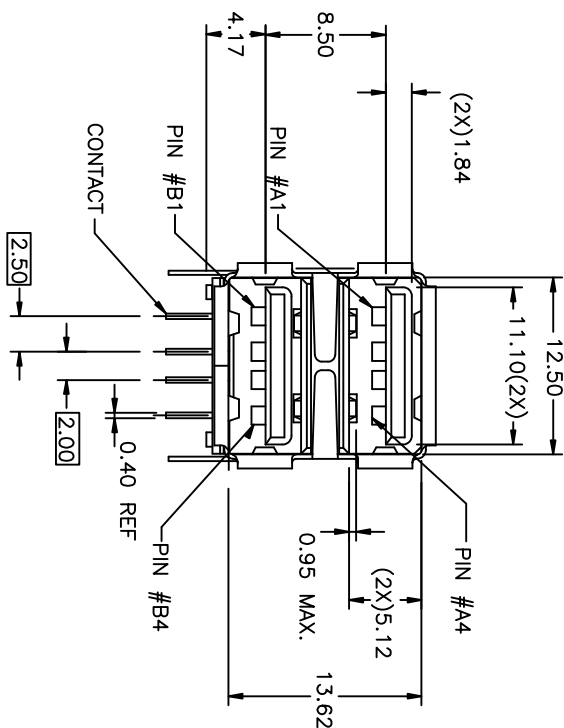
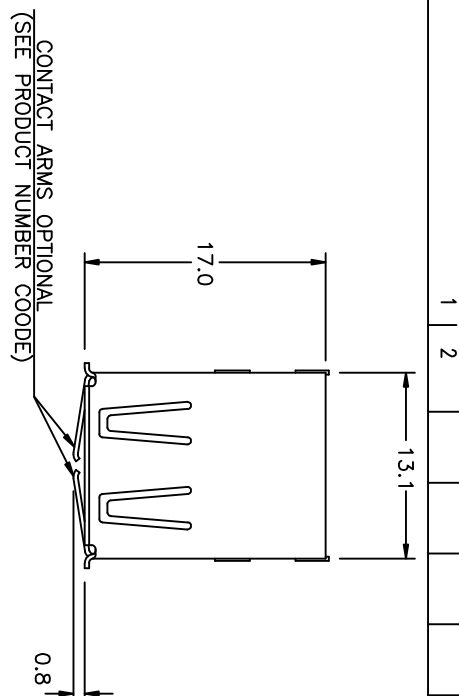
CONTACTS-0.76um MINIMUM GLOD FLASH OVER PALLADIUM
NICKEL IN CONTACT AREA OR 0.76um MIN GOLD FLASH
3.8um MINIMUM TIN-LEAD ON SOLDER TAILS
ALL OVER 1.27um MINIMUM NICKEL.
SHELL, 5um MINIMUM BRIGHT TIN
OVER 2.5um MINIMUM NICKEL.

3. DATUM AND BASIC DIMENSIONS ESTABLISHED BY CUSTOMER.

4. RECOMMENDED PC BOARD THICKNESS OF 1.57mm.




5. P/N SEE PRODUCT NUMBER CODE.
(TO BE CONTINUED)

mat'l. code	NOTE 1 & 2	tolerances unless otherwise specified	CUSTOMER COPY	FCI	UNIV. SERIAL BUS DOUBLE DECK RECEPTACLE	code
ltr	ecn no	dr	date	line art	projection	title
AC	N05-0086	PH	03/09/05	.XX ±.20	1:1	DOUBLE DECK RECEPTACLE
AD	N05-0106	PH	04/13/05	.XXX ±.10	2:1	DOUBLE DECK RECEPTACLE
AE	N06-0101	HB	04/13/06	0° ±.3°	1:1	DOUBLE DECK RECEPTACLE
AF	N06-0133	HB	05/17/06	engr	1:1	DOUBLE DECK RECEPTACLE
AA	T04-0206	WL	05/13/04	cht	1:1	DOUBLE DECK RECEPTACLE
AB	N04-0086	PH	11/09/04	qppl	1:1	DOUBLE DECK RECEPTACLE
sheet	revision	AF	AA	Y	AE	size
index	sheet	1	2	3	4	dwg no



6. FOR LEAD FREE P/N, A LEAD FREE LABEL WILL APPEAR AT PACKING.
7. FOR LEAD FREE P/N, THE HOUSING WILL WITHSTAND EXPOSURE TO 260°C PEAK TEMPERATURE FOR 40 SECONDS IN A CONVECTION, INFRARED OR VAPOR PHASE REFLOW OVEN.
8. FOR LEAD FREE P/N, THE PRODUCT MEET EUROPEAN UNION DIRECTIVES AND OTHER COUNTRY REGULATION AS DESCRIBED IN GS-62-008

ASSEMBLY WITHOUT BACK SHIELD
72309-XX3XX SHOWN

mat'l. code				tolerances unless otherwise specified		CUSTOMER COPY		 www.fciconnect.com	
ltr	ecn no	dr	date	linear	.X ±.30	projection	title	UNIV. SERIAL BUS	
AA				.XXX ±.10			DOUBLE DECK RECEPTACLE		
				angles	0° ±3°		product family	USB	code
				dr	PETER PAM	12/10/97	size	dwg no	—
				engr	R Y LIU	12/10/97	scale		
				chr	R Y LIU	12/10/97			
				appd	JENN TSMO	12/10/97	A4	72309	sheet
sheet	revision								2 of 4
index	sheet								



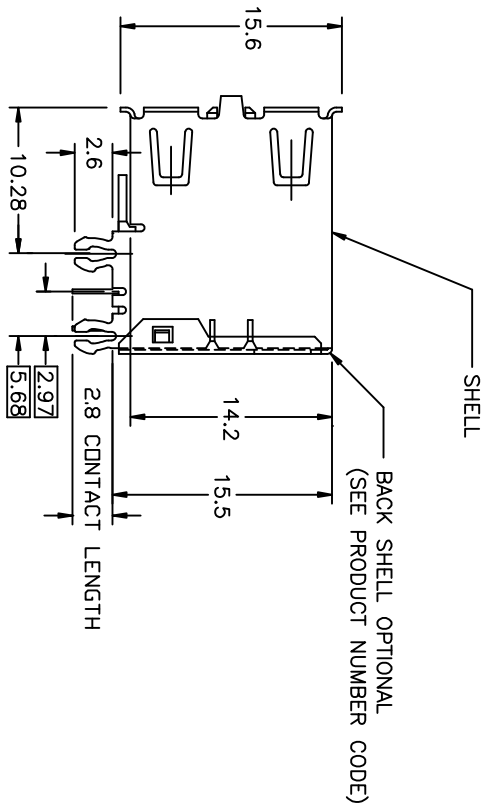
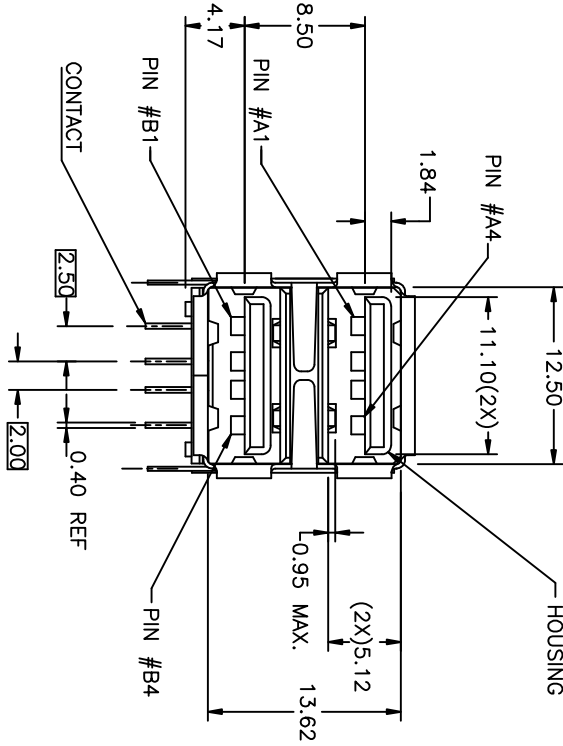
B

A

form no. 7530-001-103

1 | 2

ASSEMBLY WITH BACK SHIELD
 72309 - XX4XX SHOWN



1 | 2

3 |

4

mat'l. code	ecr no	dr	date	tolerances unless otherwise specified	CUSTOMER COPY	title	product family	code
Y				.X ±.30		UNIV. SERIAL BUS	USB	
				.XX ±.20		DOUBLE DECK RECEPTACLE		
				.XXX ±.10				
				0° ±5°				
				PETER PM	12/01/97			
				engr	R Y LU	12/10/97		
				chr	R Y LU	12/10/97		
				appd	JENN TSAO	12/10/97		
sheet	revision							
index	sheet							

3 |

4

code 22526



PRODUCT NUMBER CODE

72309 -

X

X

X

X

X

P

S

LF

BASE PRODUCT NUMBER

HOUSING COLOR + SHELL PLATING OPTIONS

- 0 - WHITE + NICKEL & TIN LEAD PLATING
- 1 - BLACK + NICKEL & TIN LEAD PLATING
- 2 - WHITE + NICKEL PLATING ONLY
- 3 - BLACK + NICKEL PLATING ONLY
- 4 - WHITE + NICKEL PLATING ONLY + LCP HSG
- 5 - BLACK + NICKEL PLATING ONLY + LCP HSG
- 6 - BLACK + NICKEL & TIN LEAD PLATING + LCP HSG
- 7 - BLACK + NICKEL & BRIGHT TIN PLATING
- 8 - WHITE + NICKEL & BRIGHT TIN PLATING
- 9 - BLACK + NICKEL & BRIGHT TIN PLATING + LCP HSG

SHELL PLATING OPTION

- 0 - BARREL-PLATING
- 1 - PRE-PLATING

SHELL OPTIONS

- 1 - NO BACK SHIELD, NO ARMS, FRONT GROUNDING ARMS
- 2 - BACK SHIELD, NO FRONT GROUNDING ARMS
- 3 - NO BACK SHIELD, FRONT GROUNDING ARMS
- 4 - BACK SHIELD, FRONT GROUNDING ARMS

TERMINAL PLATING OPTION

- 0 - 50u" NI UNDERPLATE
30u" GXT CONTACT AREA
100u" TIN/LEAD TAIL AREA
- 2 - 50u" NI UNDERPLATE
30u" GOLD CONTACT AREA
100u" TIN/LEAD TAIL AREA
- 3 - 50u" NI UNDERPLATE
30u" GOLD CONTACT AREA
100u" MATTE TIN TAIL AREA
- 4 - 50u" NI UNDERPLATE
30u" GXT CONTACT AREA
100u" MATTE TIN TAIL AREA

PACKAGING OPTIONS

- B - TUBES
- R - TAPE & REEL

WITH DATE CODE

ONLY FOR PANASONIC

LEAD FREE MARK

LEAD FREE CONVERSION RULES -

HOUSING COLOR AND SHELL PLATING OPTION: 0 TO 8, 1 TO 7, 6 TO 9
TERMINAL PLATING OPTION: 0 TO 4, 2 TO 3

NOTE:
AVAILABLE P/N'S IN FCI NOW FOLLOWED:

72309-0010X/8014XLF	72309-2010X/2014XLF
72309-0012X/8013XLF	72309-2012X/2013XLF
72309-0020X/8024XLF	72309-2020X/2024XLF
72309-0022X/8023XLF	72309-2022X/2023XLF
72309-0030X/8034XLF	72309-2030X/2034XLF
72309-0032X/8033XLF	72309-2032X/2033XLF
72309-0040X/8044XLF	72309-2040X/2044XLF
72309-0042X/8043XLF	72309-2042X/2043XLF
72309-1010X/7014XLF	72309-3010X/3014XLF
72309-1012X/7013XLF	72309-3012X/3013XLF
72309-1020X/7024XLF	72309-3020X/3024XLF
72309-1022X/7023XLF	72309-3022X/3023XLF
72309-1030X/7034XLF	72309-3030X/3034XLF
72309-1032X/7033XLF	72309-3032X/3033XLF
72309-1040X/7044XLF	72309-3040X/3044XLF
72309-1042X/7043XLF	72309-3042X/3043XLF
72309-0110X/8114XLF	72309-4010X/4014XLF
72309-0112X/8113XLF	72309-4012X/4013XLF
72309-0120X/8124XLF	72309-5010X/5014XLF
72309-0122X/8123XLF	72309-5012X/5013XLF
72309-0130X/8134XLF	72309-5030X/5034XLF
72309-0132X/8133XLF	72309-5032X/5033XLF
72309-0140X/8144XLF	72309-5040X/5044XLF
72309-0142X/8143XLF	72309-5042X/5043XLF
72309-1110X/7114XLF	72309-6010X/6014XLF
72309-1112X/7113XLF	72309-6012X/6013XLF
72309-1120X/7124XLF	72309-6020X/6024XLF
72309-1122X/7123XLF	
72309-1130X/7134XLF	
72309-1132X/7133XLF	
72309-1140X/7144XLF	
72309-1142X/7143XLF	

mat'l. code	NOTE 1 & 2	dr	date	tolerances unless otherwise specified	CUSTOMER COPY	title	UNIV. SERIAL BUS	DOUBLE DECK RECEPTACLE	code
AE				linear		projection	mm	product family	USB
				angles				size dwg no	72309
				engr	J. DAVID	5/10/96			
				chr	J. DAVID	6/29/96			
				oppl	J. DAVID	6/29/96			
sheet	revision								
index	sheet								

Mouser Electronics

Authorized Distributor

Click to View Pricing, Inventory, Delivery & Lifecycle Information:

[FCI / Amphenol:](#)

[72309-7024RLF](#) [72309-7013BLF](#)