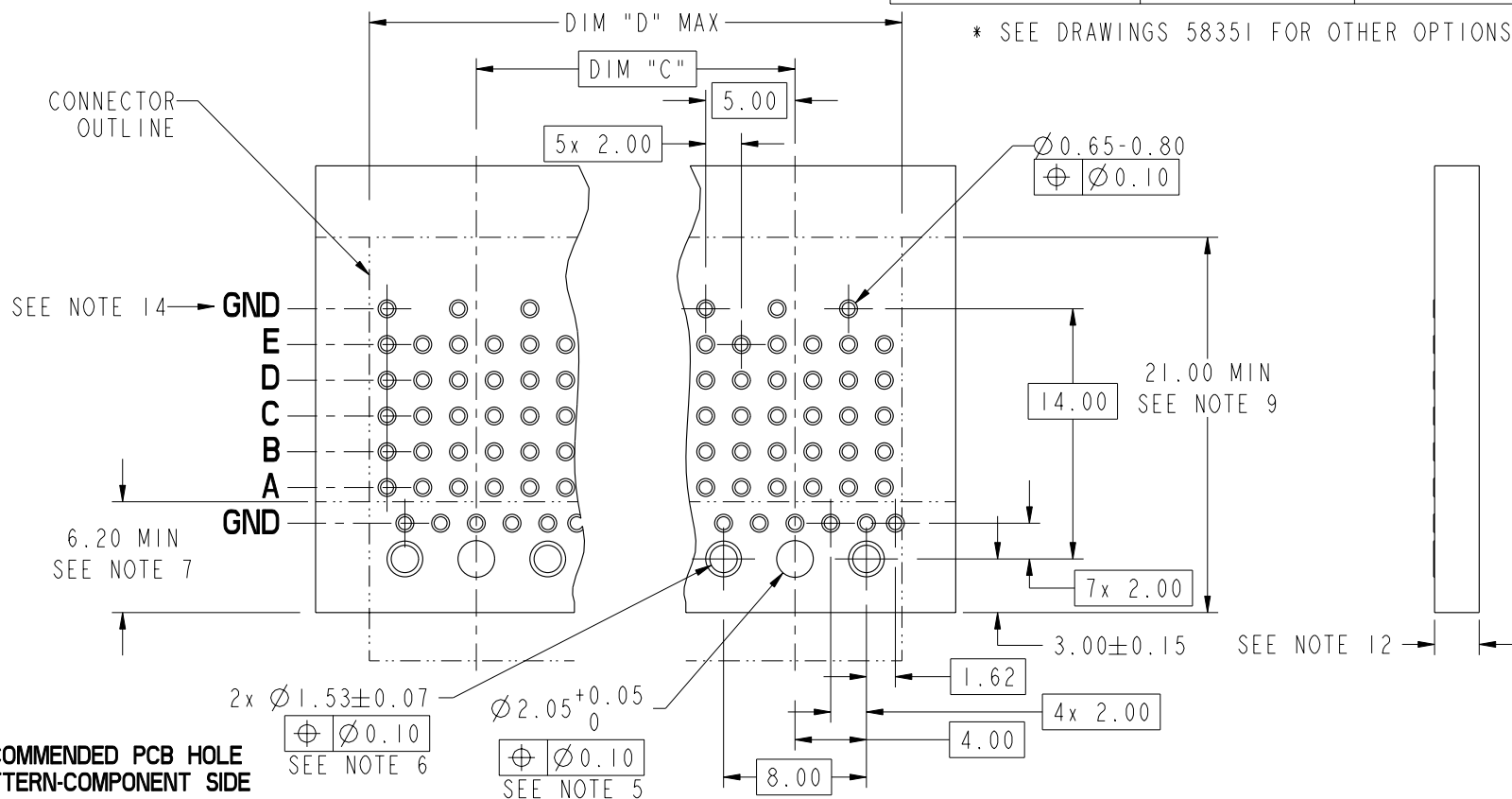




PRODUCT NUMBER
84854-XY
84854-XYLF

PRESS-FIT HOLES		
HOLE DIAMETER AFTER PLATING	$\varnothing 0.65\text{--}\varnothing 0.80$ *	$\varnothing 1.53$
DRILLED HOLE	$\varnothing 0.81\text{--}\varnothing 0.86$ ( $\varnothing 0.85$ DRILL)	$\varnothing 1.61\text{--}\varnothing 1.66$ ( $\varnothing 1.65$ DRILL)
COPPER PLATING	0.025-0.050	0.025-0.050
SnPb PLATING	0.005-0.015	0.005-0.015



**RECOMMENDED PCB HOLE  
PATTERN-COMPONENT SIDE**

PRODUCT NO.	DIM "C"	DIM "D"	TOOLING STATUS
-X01	--	11.98	AVAILABLE
-X02	12.00	23.98	AVAILABLE
-X03	24.00	35.98	AVAILABLE
-X04	36.00	47.98	AVAILABLE
-X05	48.00	59.98	PRELIMINARY
-X06	60.00	71.98	PRELIMINARY

mat'l code				SEE NOTES		tolerances unless otherwise specified		CUSTOMER		FCI	
ltr	ecr no.	dr	date			linear	0.X ±0.3		COPY		www.fciconnect.com
P	---	---	---			angles	0.XX ±0.10		projection		
							0.XXX ±0.050				
							0° ±2°				
				dr	S. KLINE	07-10-01					
				enr	W. J. SWAIN	07-10-01					
				chr	W. J. SWAIN	07-10-01					
				appd	W. J. SWAIN	07-10-01					
sheet index	revision sheet										

title		5 ROW RECP MONOBLOCK SIGNAL ASSEMBLY 3.4 PCB	
product family	METRAL 1000	code	213
size	dwg no	sheet	2
A	84854		



PRODUCT NUMBER
84854-XYX
84854-XYXLF

#### NOTES

- UNLESS OTHERWISE SPECIFIED ALL DIMENSIONS AND TOLERANCES ARE IN ACCORDANCE WITH ASME Y14.5M, 1994
- HOUSING MATERIAL: LIQUID CRYSTAL POLYMER, GLASS FILLED  
FLAME RETARDANT ACC. UL94V-0
- GROUND SHIELD MATERIAL: COPPER ALLOY  
SIGNAL CONTACT MATERIAL: COPPER ALLOY
- PLATING ON PRESS-FIT TAIL AREA: SnPb
- Ø2.05 HOLE IS UNPLATED
- Ø1.53 PLATED HOLES (2x) ARE FOR GROUNDS
- AVOID TRACES IN THIS AREA ON TOP OF PCB DUE TO EXPOSED GROUND SHIELD
- UNDERPLATING FOR SHIELD AND SIGNAL CONTACTS IS 1.3 µm Ni MIN
- COMPONENT KEEP OUT ZONE FOR PRESS BLOCK CLEARANCE
- PRODUCT MARKING: PRODUCT CODE, DATE AND LOT CODE
- SEE GS-20-017 FOR APPLICATION OF CONNECTOR TO PCB
- PCB THICKNESS RANGE: 1.3mm TO 3.4mm
- SEE PRODUCT SPECIFICATION GS-12-110 FOR PRODUCT PERFORMANCE CHARACTERISTICS.

- THIS GND ROW OF VIA-HOLES ONLY REQUIRED FOR PREVIOUS REVISIONS OF THIS DESIGN WHERE THE TOP SHIELDS HAD EON PRESS-FIT. DUE TO INVENTORIES OF PREVIOUS VERSION WE RECOMMEND THEY BE DESIGNED IN.
- A CUSTOMER SPECIAL CODE 73981-102D EXISTS.
- THE PRODUCTS WHERE THE PART NUMBER ENDS IN LF MEET EUROPEAN UNION DIRECTIVES AND OTHER COUNTRY REGULATIONS AS DESCRIBED IN GS-22-008.  
ALL PRODUCTS WILL WITHSTAND EXPOSURE TO 260° FOR 60 SECONDS IN A CONVECTION, INFRA-RED OR VAPOR PHASE REFLOW OVEN.

PRODUCT NUMBER	CONTACT PLATING	SHIELD PLATING
84854-1YY	0.8 µm Au	0.8 µm Au
84854-3YY	1.3 µm Au	1.3 µm Au
84854-9YY	0.8 µm GXT	0.8 µm GXT
84854-9YYS	0.8 µm GXT	1.3 µm GXT
84854-1YYLF	0.8 µm Au	0.8 µm Au
84854-3YYLF	1.3 µm Au	1.3 µm Au
84854-9YYLF	0.8 µm GXT	0.8 µm GXT
84854-9YYSLF	0.8 µm GXT	0.8 µm GXT

\* SEE NOTE 16 FOR LEAD FREE OPTION

mat'l code				NO		tolerances unless otherwise specified		CUSTOMER		<div>FCi</div> <div>www.fciconnect.com</div>			
lfr	ecn no.	dr	date	linear	0. X ±0.3			COPY		<div>projection</div> <div></div> <div>title 5 ROW RECP MONOBLOCK SIGNAL ASSEMBLY 3.4 PCB</div>			
P	---	---	---		0. XX ±0.10								
					0. XXX ±0.050								
				angles	0° ±2°								
				dr	S. KLINE	07-10-01	<div>MM</div> <div></div>		product family		METRAL 1000	code	
				enqr	W.J. SWAIN	07-10-01			size	dwg no	213		
				chr	W.J. SWAIN	07-10-01	scale		A		84854	sheet 3	
				appd	W.J. SWAIN	07-10-01	1 : 1						
sheet index		revision sheet											

Pro/E

cage code 22526

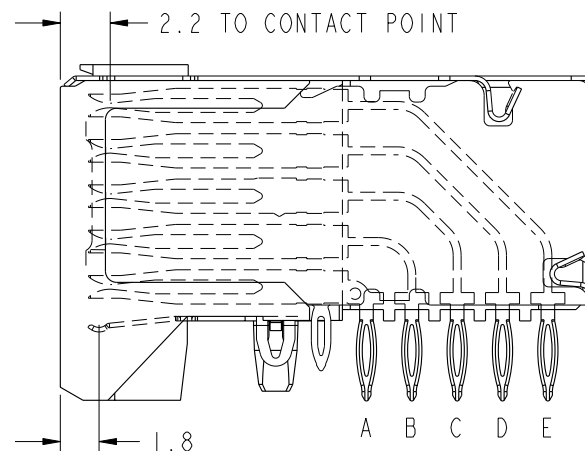
PDM: Rev:P

STATUS:Released

Printed: Jun 28, 2007

PRODUCT NUMBER
84854-XYX
84854-XYXLF

DISTANCE FROM CONTACT POINT TO BOARD	
CONTACT	DISTANCE
A	12.5
B	16.2
C	19.5
D	22.3
E	25.2



CONTACT POINT AND SKEW

mat'l code				SEE NOTES		tolerances unless otherwise specified		CUSTOMER		FCI	
ltr	ecr no.	dr	date					COPY			www.fciconnect.com
P	---	---	---	linear		0.X ±0.3		projection			
						0.XX ±0.10					
				angles		0.XXX ±0.050					
						0° ±2°					
				dr	S. KLINE	07-10-01					
				enr	W. J. SWAIN	07-10-01					
				chr	W. J. SWAIN	07-10-01				product family METRAL 1000 code 213 size dwg no 84854 sheet 4	
				appd	W. J. SWAIN	07-10-01					
sheet index	revision sheet										

This document is the property of and embodies CONFIDENTIAL and PROPRIETARY information of FCI. No part of the information shown on this document may be used in any way or disclosed to others without the written consent of FCI. Copyright FCI.

# Mouser Electronics

Authorized Distributor

Click to View Pricing, Inventory, Delivery & Lifecycle Information:

[FCI / Amphenol:](#)

[84854-301LF](#)