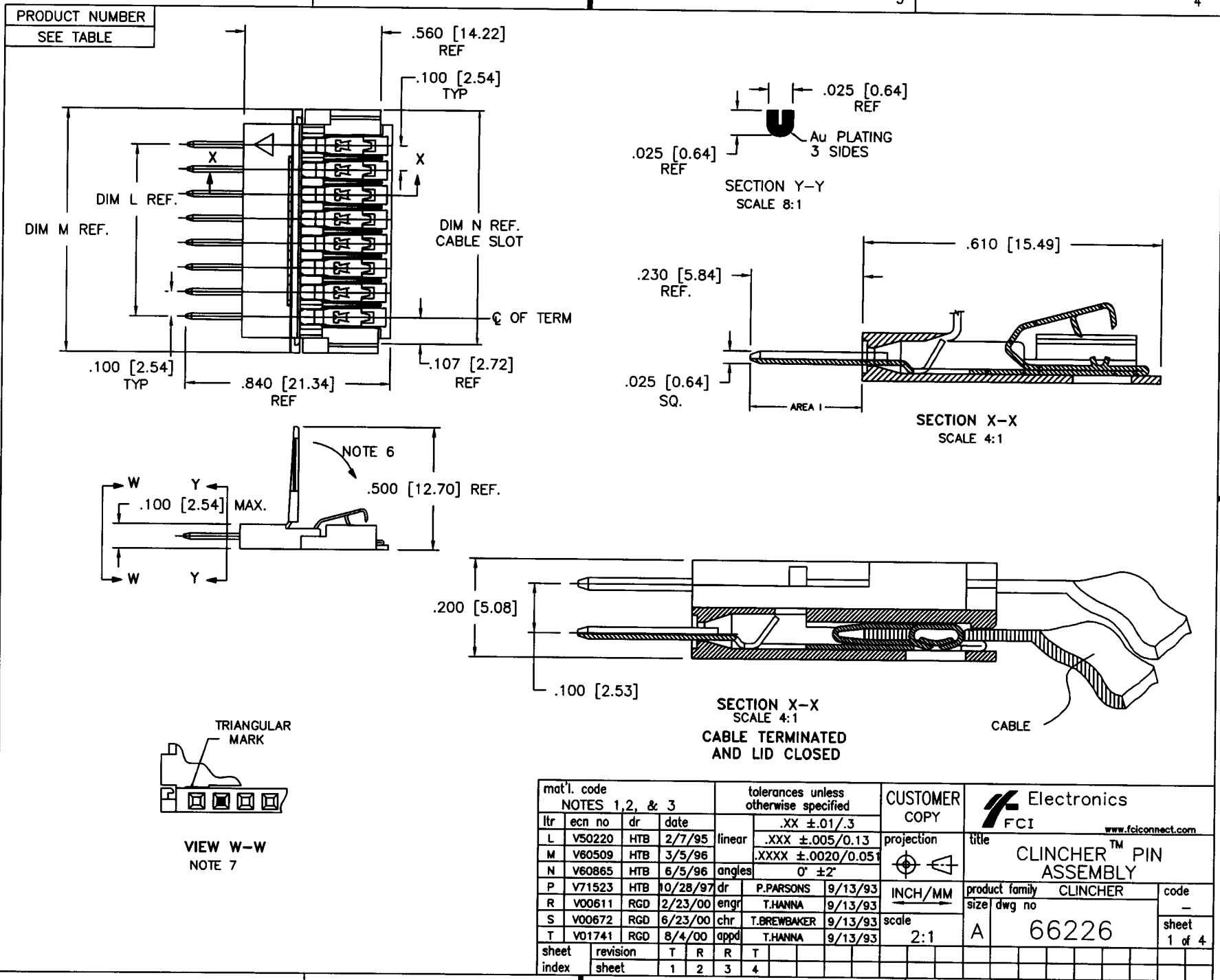


Tous droits strictement réservés. Reproduction ou communication à des tiers interdite sous quelque forme que ce soit sans autorisation écrite du propriétaire. Propriété de c FCI. Droits de reproduction FCI.



All rights strictly reserved. Reproduction or issue to third parties in any form whatever is not permitted without written authority from the proprietor. Property of FCI. Copyright FCI.


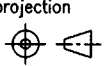
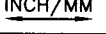


PRODUCT NUMBER	NO. OF POSITION	DIM L ENGLISH	DIM L METRIC	DIM M ENGLISH	DIM M METRIC	DIM N ENGLISH	DIM N METRIC	PLATING CODE	COLOR
66226-001			U N A	S S I G N E D					
66226-002	2	0.100	2.54	0.390	9.91	0.315	8.00	1	BLUE
66226-003	3	0.200	5.08	0.490	12.45	0.415	10.54	1	BLUE
66226-004	4	0.300	7.62	0.590	14.99	0.515	13.08	1	BLUE
66226-005	5	0.400	10.16	0.690	17.53	0.615	15.62	1	BLUE
66226-006	6	0.500	12.70	0.790	20.07	0.715	18.16	1	BLUE
66226-007	7	0.600	15.24	0.890	22.61	0.815	20.70	1	BLUE
66226-008	8	0.700	17.78	0.990	25.15	0.915	23.24	1	BLUE
66226-009	9	0.800	20.32	1.090	27.69	1.015	25.78	1	BLUE
66226-010	10	0.900	22.86	1.190	30.23	1.115	28.32	1	BLUE
66226-011	11	1.000	25.40	1.290	32.77	1.215	30.86	1	BLUE
66226-012	12	1.100	27.94	1.390	35.31	1.315	33.40	1	BLUE
66226-013	13	1.200	30.48	1.490	37.85	1.415	35.94	1	BLUE
66226-014	14	1.300	33.02	1.590	40.39	1.515	38.48	1	BLUE
66226-015	15	1.400	35.56	1.690	42.93	1.615	41.02	1	BLUE
66226-016	16	1.500	38.10	1.790	45.47	1.715	43.56	1	BLUE
66226-017	17	1.600	40.64	1.890	48.01	1.815	46.10	1	BLUE
66226-018	18	1.700	43.18	1.990	50.55	1.915	48.64	1	BLUE
66226-019	19	1.800	45.72	2.090	53.09	2.015	51.18	1	BLUE
66226-020	20	1.900	48.26	2.190	55.63	2.115	53.72	1	BLUE
66226-021	21	2.000	50.80	2.290	58.17	2.215	56.26	1	BLUE
66226-022	22	2.100	53.34	2.390	60.71	2.315	58.80	1	BLUE
66226-023	23	2.200	55.88	2.490	63.25	2.415	61.34	1	BLUE
66226-024	24	2.300	58.42	2.590	65.79	2.515	63.88	1	BLUE
66226-025	25	2.400	60.96	2.690	68.33	2.615	66.42	1	BLUE
66226-026	26	2.500	63.50	2.790	70.87	2.715	68.96	1	BLUE
66226-027	27	2.600	66.04	2.890	73.41	2.815	71.50	1	BLUE
66226-028	28	2.700	68.58	2.990	75.95	2.915	74.04	1	BLUE
66226-029	29	2.800	71.12	3.090	78.49	3.015	76.58	1	BLUE
66226-030	30	2.900	73.66	3.190	81.03	3.115	79.12	1	BLUE
66226-031	31	3.000	76.20	3.290	83.57	3.215	81.66	1	BLUE
66226-032	32	3.100	78.74	3.390	86.11	3.315	84.20	1	BLUE

NOTES :

- HOUSING MATERIAL : THERMOPLASTIC, FLAME RETARDANT PER UL94V-0. COLOR: SEE TABLE.
- TERMINAL MATERIAL : 1/2 HARD CU NI ALLOY, UNS-C72500.
- TERMINAL PLATING : SEE PART NO. TABULATION.
- SEE TA-372 FOR CRIMP HEIGHT.
- FOR CABLE AND CIRCUITRY INFO. SEE TA-264 & 371.
- LATCH SWINGS CLOSED AFTER TERMINATION MAINTAINING A MAX. OVER ALL HEIGHT OF .100/2.54.
- FIGURE SHOWS POSITION NO. 2 CLOSED. POSITION NUMBERS INITIATE FROM TRIANGULAR MARK END. SEE CHART FOR CLOSED AND EMPTY POSITION(S).

NO.	TERMINAL PLATING
1	100u"/2.54u MIN. SnPb (ALL OVER)
2	30u"/0.76u MIN Au IN AREA 1 (SEE SECT. Y-Y SH. 1)

mat'l. code		tolerances unless otherwise specified		CUSTOMER COPY		 Electronics www.fciconnect.com	
ltr	ecn no	dr	date	linear	.XX ±.01/.3	projection	title
R					.XXX ±.005/0.13		CLINCHER™ PIN ASSEMBLY
				angles	.XXX ±.0020/0.051		
					0° ±2°		product family CLINCHER code - size dwg no
				dr	P.PARSONS 9/13/93		
				engr	T.HANNA 9/13/93	66226	
				chr	T.BREWBAKER 9/13/93		
				appd	T.HANNA 9/13/93		sheet 2 of
sheet index	revision sheet						

cage code
22526


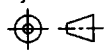
Tous droits strictement réservés. Reproduction ou communication à des tiers interdite sous quelque forme que ce soit sans autorisation écrite du propriétaire. Propriété de c FCI. Droits de reproduction FCI.

All rights strictly reserved. Reproduction or issue to third parties in any form whatever is not permitted without written authority from the proprietor. Property of FCI. Copyright FCI.

FCI

PRODUCT NUMBER	NO. OF POSITION	DIM L ENGLISH	DIM L METRIC	DIM M ENGLISH	DIM M METRIC	DIM N ENGLISH	DIM N METRIC	PLATING CODE	COLOR
66226-033			U N A	S S I G	N E D				
66226-034	2	0.100	2.54	0.390	9.91	0.315	8.00	2	BLUE
66226-035	3	0.200	5.08	0.490	12.45	0.415	10.54	2	BLUE
66226-036	4	0.300	7.62	0.590	14.99	0.515	13.08	2	BLUE
66226-037	5	0.400	10.16	0.690	17.53	0.615	15.62	2	BLUE
66226-038	6	0.500	12.70	0.790	20.07	0.715	18.16	2	BLUE
66226-039	7	0.600	15.24	0.890	22.61	0.815	20.70	2	BLUE
66226-040	8	0.700	17.78	0.990	25.15	0.915	23.24	2	BLUE
66226-041	9	0.800	20.32	1.090	27.69	1.015	25.78	2	BLUE
66226-042	10	0.900	22.86	1.190	30.23	1.115	28.32	2	BLUE
66226-043	11	1.000	25.40	1.290	32.77	1.215	30.86	2	BLUE
66226-044	12	1.100	27.94	1.390	35.31	1.315	33.40	2	BLUE
66226-045	13	1.200	30.48	1.490	37.85	1.415	35.94	2	BLUE
66226-046	14	1.300	33.02	1.590	40.39	1.515	38.48	2	BLUE
66226-047	15	1.400	35.56	1.690	42.93	1.615	41.02	2	BLUE
66226-048	16	1.500	38.10	1.790	45.47	1.715	43.56	2	BLUE
66226-049	17	1.600	40.64	1.890	48.01	1.815	46.10	2	BLUE
66226-050	18	1.700	43.18	1.990	50.55	1.915	48.64	2	BLUE
66226-051	19	1.800	45.72	2.090	53.09	2.015	51.18	2	BLUE
66226-052	20	1.900	48.26	2.190	55.63	2.115	53.72	2	BLUE
66226-053	21	2.000	50.80	2.290	58.17	2.215	56.26	2	BLUE
66226-054	22	2.100	53.34	2.390	60.71	2.315	58.80	2	BLUE
66226-055	23	2.200	55.88	2.490	63.25	2.415	61.34	2	BLUE
66226-056	24	2.300	58.42	2.590	65.79	2.515	63.88	2	BLUE
66226-057	25	2.400	60.96	2.690	68.33	2.615	66.42	2	BLUE
66226-058	26	2.500	63.50	2.790	70.87	2.715	68.96	2	BLUE
66226-059	27	2.600	66.04	2.890	73.41	2.815	71.50	2	BLUE
66226-060	28	2.700	68.58	2.990	75.95	2.915	74.04	2	BLUE
66226-061	29	2.800	71.12	3.090	78.49	3.015	76.58	2	BLUE
66226-062	30	2.900	73.66	3.190	81.03	3.115	79.12	2	BLUE
66226-063	31	3.000	76.20	3.290	83.57	3.215	81.66	2	BLUE
66226-064	32	3.100	78.74	3.390	86.11	3.315	84.20	2	BLUE

NO.	TERMINAL PLATING
1	100u"/2.54u MIN. SnPb (ALL OVER)
2	30u"/0.76u MIN Au IN AREA 1 (SEE SECT. Y-Y SH. 1)

mat'l. code				tolerances unless otherwise specified		CUSTOMER COPY		 Electronics FCI www.fciconnect.com	
ltr	ecn no	dr	date	linear	XX ±.01/.3	projection	title		
R					.XXX ±.005/0.13		CLINCHER™ PIN ASSEMBLY		
				angles	.XXX ±.0020/0.051		product family	CLINCHER	code
				dr	P. PARSONS 9/13/93	INCH/MM	size	dwg no	sheet
				engr	T. HANNA 9/13/93	scale	A	66226	3 of
				chr	T. BREWBAKER 9/13/93				
				appd	T. HANNA 9/13/93	1:1			
sheet index	revision sheet								

cage code
22526

ACAD

PDM: Rev:T

STATUS:Released


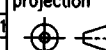

Printed: Jun 28, 2005

Tous droits strictement réservés. Reproduction ou communication à des tiers
Interdite sous quelque forme que ce soit sans autorisation écrite du propriétaire.
Propriété de c FCI. Droits de reproduction FCI.

All rights strictly reserved. Reproduction or issue to third parties in any
form whatever is not permitted without written authority from the proprietor.
Property of FCI. Copyright FCI.

PRODUCT NUMBER	NO. OF POSITION	1 2		3		4		PLATING CODE	POSITION NO. CLOSED (SEE NOTE 7)	TERMINAL NO. ABSENT (SEE NOTE 7)	COLOR
		DIM L ENGLISH	DIM L METRIC	DIM M ENGLISH	DIM M METRIC	DIM N ENGLISH	DIM N METRIC				
66226-201	5	0.400	10.16	0.690	17.53	0.615	15.62	2	2	2	BLUE
66226-202	12	1.100	27.94	1.390	35.31	1.315	33.40	2	5	5	BLUE
66226-203	7	0.600	15.24	0.890	22.61	1.815	46.10	2	2	2	BLUE
66226-204	4	0.300	7.62	0.590	14.99	0.515	13.08	2	N/A	3	BLUE
66226-205	10	0.900	22.86	1.190	30.23	1.115	28.32	2	N/A	5	BLUE
66226-206	9	0.800	20.32	1.090	27.69	1.015	25.78	2	N/A	8	BLUE
66226-207	8	0.700	17.78	0.990	25.15	0.915	23.24	2	N/A	3	BLUE
66226-208	13	1.200	30.48	1.490	37.85	1.415	35.94	2	N/A	5	BLUE
66226-209	3	0.200	5.08	0.490	12.45	0.415	10.54	1	N/A	2	BLUE
66226-210	12	1.100	27.94	1.390	35.31	1.315	33.40	2	N/A	5,6,7,8	BLUE
66226-211	12	1.100	27.94	1.390	35.31	1.315	33.40	2	N/A	10	BLUE
66226-212	14	1.300	33.02	1.590	40.39	1.515	38.48	2	N/A	5,6,7,8,13	BLUE
66226-213	10	0.900	22.86	1.190	30.23	1.115	28.32	2	N/A	9	BLUE
66226-214	12	1.100	27.94	1.390	35.31	1.315	33.40	2	N/A	6,7,8	BLUE
66226-215	12	1.100	27.94	1.390	35.31	1.315	33.40	2	N/A	8	BLUE
66226-216	12	1.100	27.94	1.390	35.31	1.315	33.40	2	N/A	11	BLUE
66226-217	6	0.500	12.70	0.790	20.07	0.715	18.16	2	N/A	6	BLUE
66226-503	3	0.200	5.08	0.490	12.45	0.415	10.54	1	N/A	N/A	YELLOW
66226-603	3	0.200	5.08	0.490	12.45	0.415	10.54	1	N/A	N/A	RED

NO.	TERMINAL PLATING
1	100u"/2.54u MIN. SnPb (ALL OVER)
2	30u"/0.76u MIN Au IN AREA 1 (SEE SECT. Y-Y SH. 1)

mat'l. code				tolerances unless otherwise specified				CUSTOMER COPY		 Electronics FCI www.fciconnect.com	
ltr	ecr no	dr	date	linear	.XX ±.01/.3			projection	title		
T					.XXX ±.005/0.13				CLINCHER™ PIN ASSEMBLY		
				angles	.XXX ±.0020/0.051						
					0° ±2°			INCH/MM 	product family CLINCHER size/ dwg no 66226		
				dr	P.PARSONS	9/13/93					
				enr	T.HANNA	9/13/93		scale 1:1	code — sheet 4 of		
				chr	T.BREWBAKER	9/13/93					
				appd	T.HANNA	9/13/93					
sheet index	revision sheet										

1 | 2

ACAD

3 |

PDM: Rev:T

STATUS:Released

Printed: Jun 28, 2000

cage code
22526

4

Mouser Electronics

Authorized Distributor

Click to View Pricing, Inventory, Delivery & Lifecycle Information:

[FCI / Amphenol:](#)

[66226-005](#) [66226-036](#)