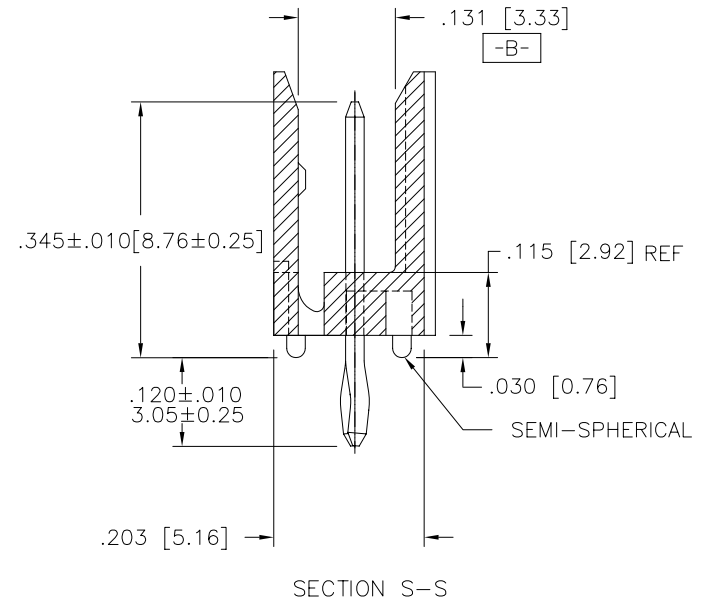
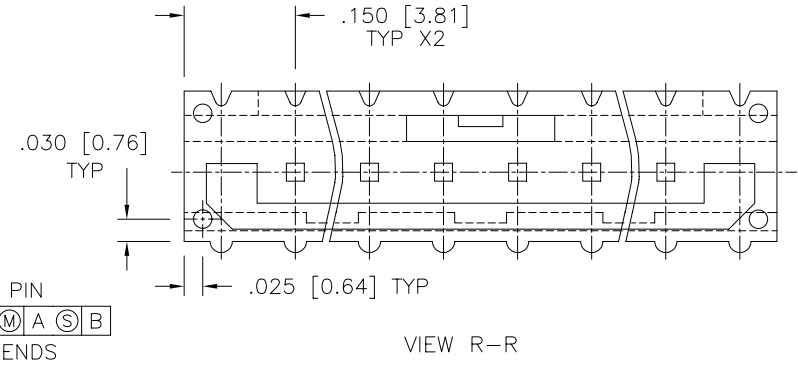
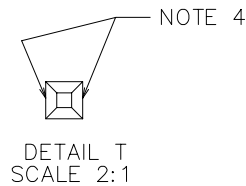
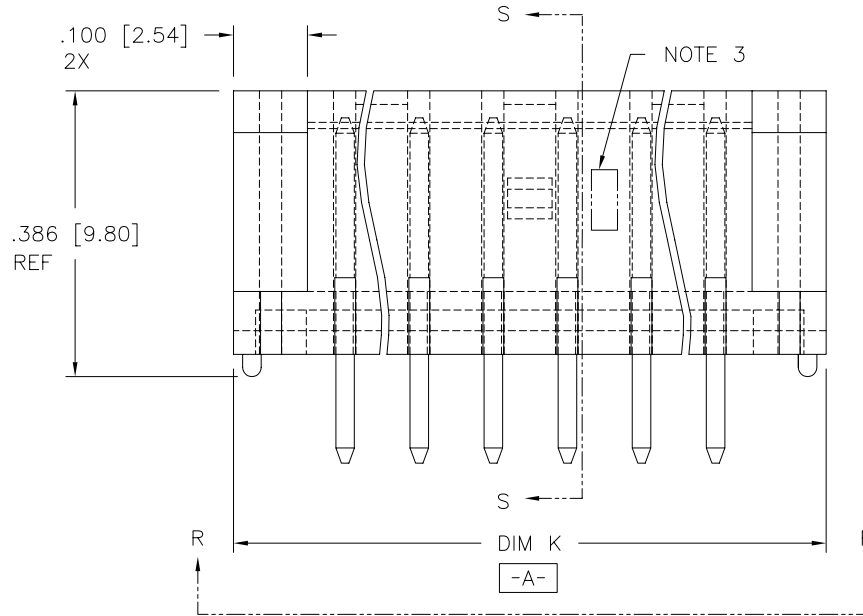
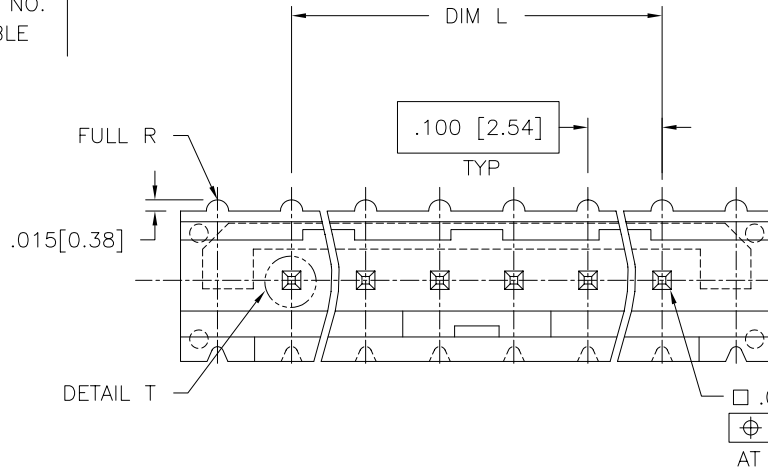



PRODUCT NO.  
SEE TABLE

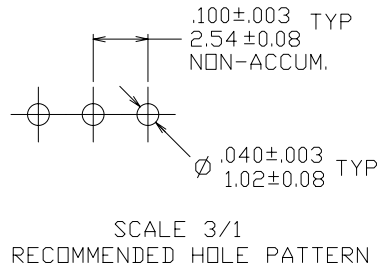


mat'l. code				tolerances unless otherwise specified		CUSTOMER COPY	 www.fciconnect.com
ltr	ecn no	dr	date	linear	angles		
A	V50891	HTB	7/6/95	.XXX ±.005/.XX±.13	0° ±2°	projection	title
B	V51273	SAR	12/8/95	.XXXX ±.0020/.XXX±.051			CLINCHER™ LATCH HEADER
C	V60842	EPK	6/3/96				VERTICAL SELF-RETAINING
D	V71289	HTB	9/22/97	dr	T.BREWBAKER	5/23/95	product family
E	M05-0109	MHT	7/15/05	enr	T. HANNA	2/17/05	CLINCHER
F	M06-0052	MHT	1/30/06	chr	T. HANNA	2/17/05	code
				appd	T. HANNA	2/17/05	sheet
sheet index	revision sheet	F	F				1 of 2
		1	2				

cage code  
22526

1 | 2

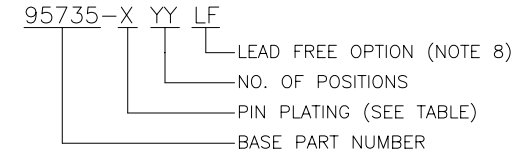
PRODUCT NUMBER	NO. OF	DIM K	DIM K	DIM L	DIM L	RETENTION
NOTE 8	POSITIONS	ENGLISH	METRIC	ENGLISH	METRIC	LEG
95735-X02	1 X 2	0.400	10.16	0.100	2.54	NOTE 5
95735-X03	1 X 3	0.500	12.70	0.200	5.08	NOTE 6
95735-X04	1 X 4	0.600	15.24	0.300	7.62	NOTE 7
95735-X05	1 X 5	0.700	17.78	0.400	10.16	
95735-X06	1 X 6	0.800	20.32	0.500	12.70	
95735-X07	1 X 7	0.900	22.86	0.600	15.24	
95735-X08	1 X 8	1.000	25.40	0.700	17.78	
95735-X09	1 X 9	1.100	27.94	0.800	20.32	
95735-X10	1 X 10	1.200	30.48	0.900	22.86	
95735-X11	1 X 11	1.300	33.02	1.000	25.40	
95735-X12	1 X 12	1.400	35.56	1.100	27.94	
95735-X13	1 X 13	1.500	38.10	1.200	30.48	
95735-X14	1 X 14	1.600	40.64	1.300	33.02	
95735-X15	1 X 15	1.700	43.18	1.400	35.56	
95735-X16	1 X 16	1.800	45.72	1.500	38.10	NOTE 7



3 |

4

DASH NO	OVERPLATING	UNDERPLATING
-1YY	30u"/.76u MIN Au	50u"/1.27u MIN Ni
-1YYLF	30u"/.76u MIN Au	50u"/1.27u MIN Ni
-4YY	120u"/3.05u MIN 93/7 SnPb	50u"/1.27u MIN Ni
-4YYLF	100u"/2.54u MIN PURE TIN	50u"/1.27u MIN Ni



#### NOTES:

- MOLDING MATERIAL: HIGH TEMPERATURE PLASTIC  
FLAME RETARDENT PER UL-94V-0. COLOR: BLACK
- PIN MATERIAL: 3/4 HD PHOS. BRONZE
- LOGO TO BE LOCATED APPROX. AS SHOWN.
- TWO NON-CRITICAL SIDES OF PIN TIP NOT PLATED,  
BOTH ENDS.
- RETENTION LEGS POS. 1 & 2 RETENTION FEATURE  
ROTATED 90° FROM THAT SHOWN.
- RETENTION LEGS POS. 1 & 3 RETENTION FEATURE  
ROTATED 90° FROM THAT SHOWN.
- RETENTION LEGS CENTER 4 POS. ONLY AS SHOWN.
- FOR LEAD FREE OPTION ADD "LF" IN THE END OF  
THE EXISTING PART NUMBERS.
- IF "LF" P/N THE PRODUCT MEETS EUROPEAN UNION DIRECTIVES  
AND OTHER COUNTRY REGULATION AS DESCRIBED IN GS-22-008.
- THE HOUSING WILL WITHSTAND EXPOSURE TO 260°C PEAK  
TEMPERATURE FOR 20-30 SECONDS IN A CONVECTION,  
INFRA-RED OR VAPOR PHASE REFLOW OVEN. SEE APPLICATION  
NOTES/PROCEDURES IF THEY ARE AVAILABLE

OR THE HOUSING WILL WITHSTAND EXPOSURE TO 260°C PEAK  
TEMPERATURE FOR 15 SECONDS IN A WAVE SOLDER APPLICATION  
WITH A 1.5mm MINIMUM THICK CIRCUIT BOARD. SEE APPLICATION  
NOTES/PROCEDURES IF THEY ARE AVAILABLE.

mat'l. code				tolerances unless otherwise specified		CUSTOMER COPY	A FCI www.fciconnect.com			
ltr	ecn no	dr	date	linear	.XX ±.01/.X±.3 .XXX ±.005/.XX±.13 .XXXX ±.0020/.XXX±.051		title CLINCHER™ LATCH HEADER VERTICAL SELF-RETAINING			
F				angles	0° ±2°	projection INCH/MM	product family CLINCHER size/ dwg no			
				dr	T.BREWBAKER 5/23/95	scale 4:1	A 95735			
				engr	T. HANNA 2/17/05					
				chr	T. HANNA 2/17/05					
				appd	T. HANNA 2/17/05					
sheet index	revision sheet									

1 | 2

3 |

4

# Mouser Electronics

Authorized Distributor

Click to View Pricing, Inventory, Delivery & Lifecycle Information:

[FCI / Amphenol:](#)

[95735-102](#)