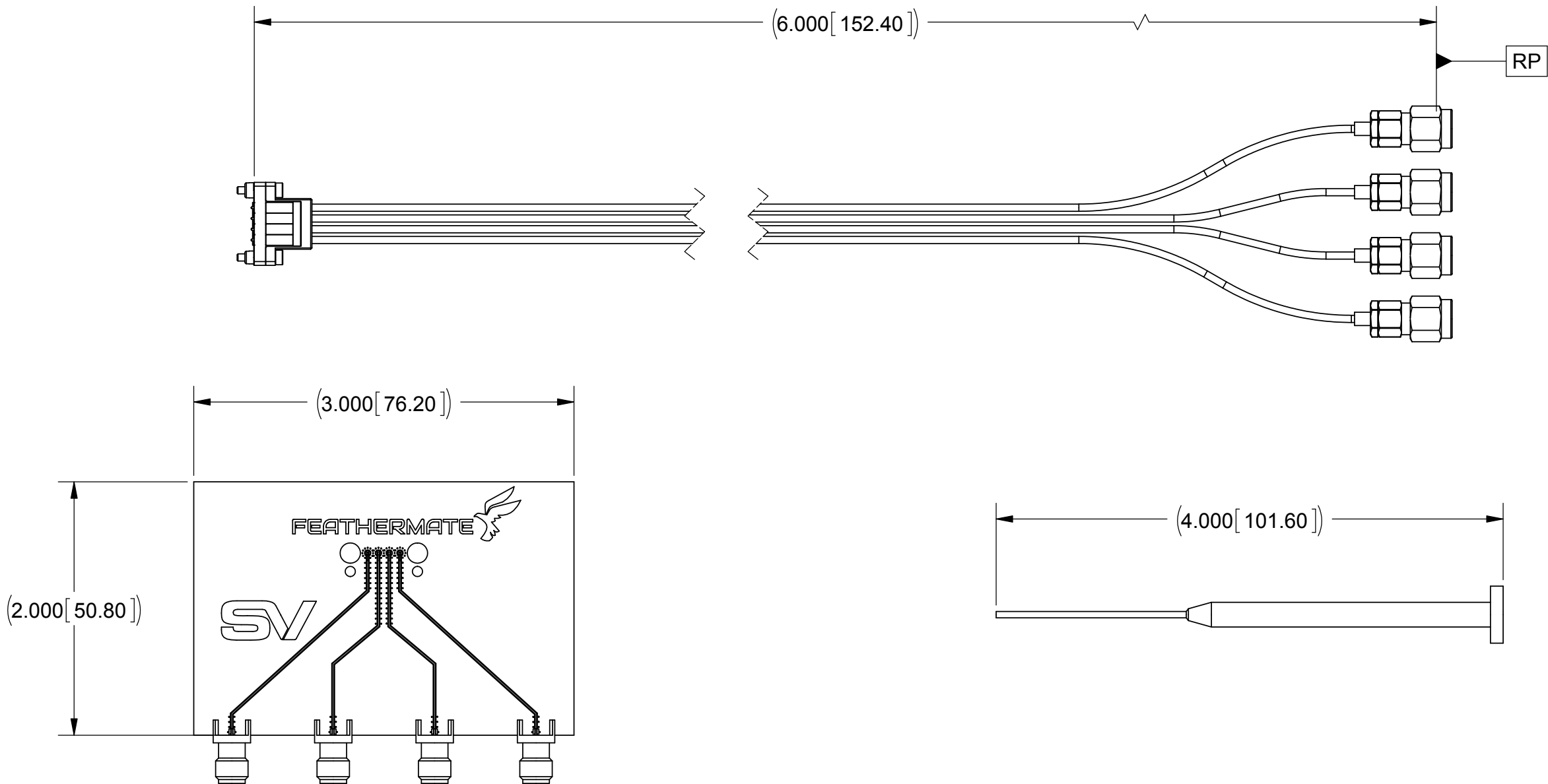


PRODUCT DATA DRAWING


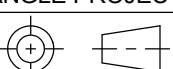
REVISION HISTORY			
REV	DESCRIPTION	DATE	APPROVED
-	DCN 42531	07/16	DAL

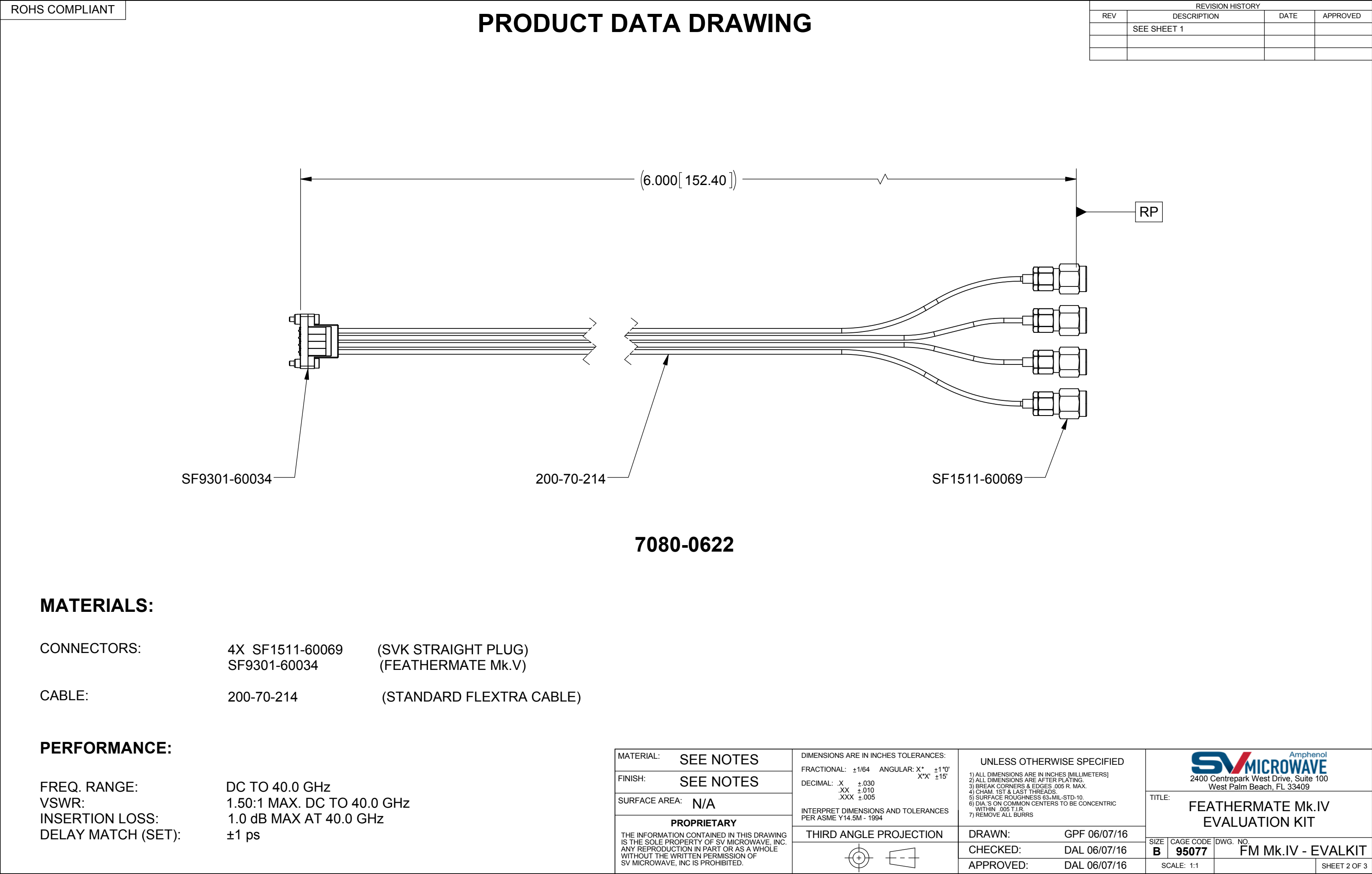


- NOTES:
- REFER TO INDIVIDUAL DATA DRAWINGS FOR MATERIAL, FINISH AND PERFORMANCE INFORMATION.
 - PERFORMANCE PLOTS AND FILES ON USB DRIVE.

THIS EVALUATION KIT INCLUDES:

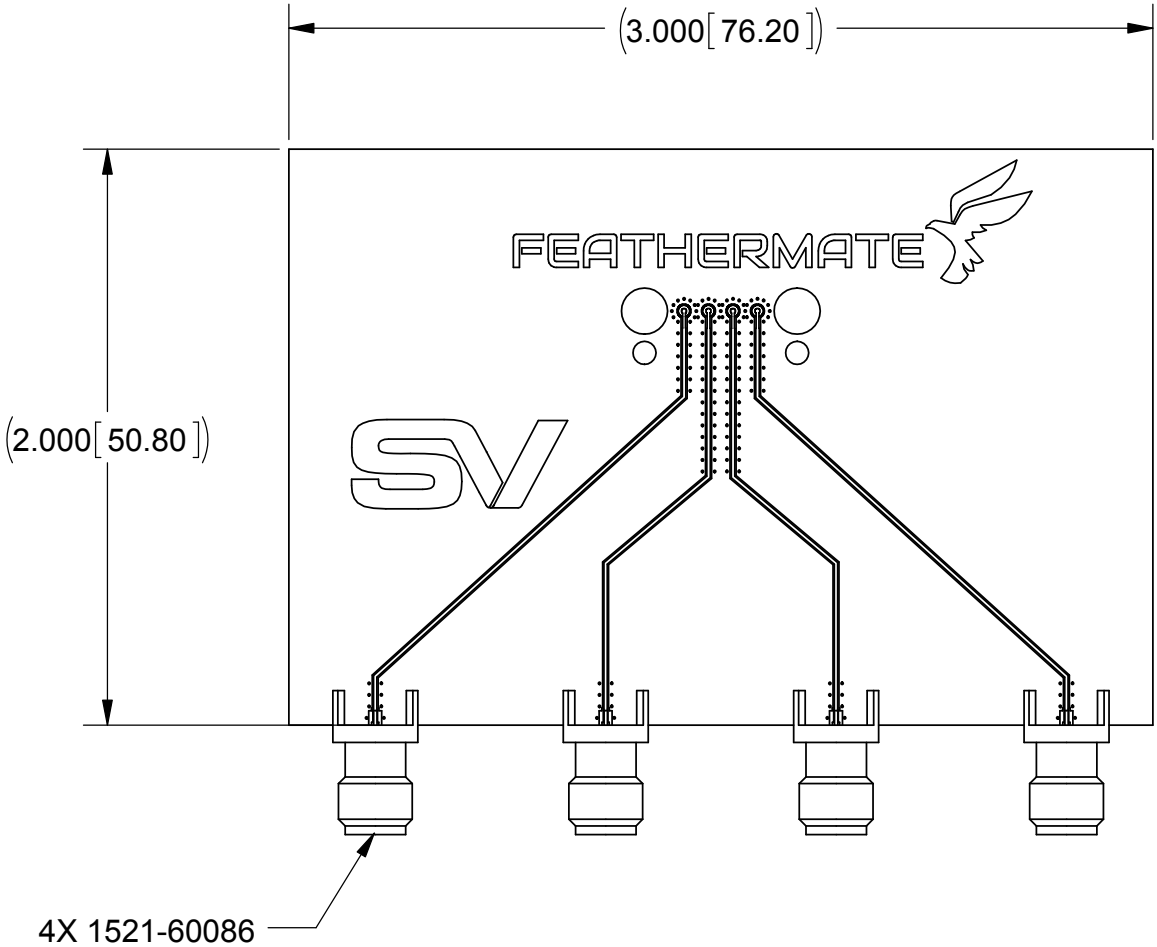
QTY	P/N	DESCRIPTION
1	7080-0622	FEATHERMATE TO SVK PLUG
4	1521-60086	SVK PLUG (ON PCB)
1	SV-FM-EVAL.01	PCB
1	7043A13	HEX TOOL
1		USB DRIVE

MATERIAL:	SEE NOTES	DIMENSIONS ARE IN INCHES TOLERANCES:		UNLESS OTHERWISE SPECIFIED		<div>Amphenol 2400 Centrepark West Drive, Suite 100 West Palm Beach, FL 33409</div>			
FINISH:	SEE NOTES	FRACTIONAL: $\pm 1/64$ ANGULAR: X° $\pm 1^{\circ}0'$ X°X' $\pm 15'$		1) ALL DIMENSIONS ARE IN INCHES (MILLIMETERS) 2) ALL DIMENSIONS ARE AFTER PLATING. 3) BREAK CORNERS & EDGES .005 R. MAX. 4) CHAM. 1ST & LAST THREADS. 5) SURFACE ROUGHNESS 63-MIL-STD-10. 6) DIA.'S ON COMMON CENTERS TO BE CONCENTRIC WITHIN .005 T.I.R. 7) REMOVE ALL BURRS		TITLE: FEATHERMATE Mk.IV EVALUATION KIT			
SURFACE AREA:	N/A	DECIMAL: .X $\pm .030$.XX $\pm .010$.XXX $\pm .005$		INTERPRET DIMENSIONS AND TOLERANCES PER ASME Y14.5M - 1994		SIZE CAGE CODE DWG. NO. B 95077 FM Mk.IV - EVALKIT			
PROPRIETARY		THIRD ANGLE PROJECTION		DRAWN: GPF 06/07/16		SCALE: 1:1			
THE INFORMATION CONTAINED IN THIS DRAWING IS THE SOLE PROPERTY OF SV MICROWAVE, INC. ANY REPRODUCTION IN PART OR AS A WHOLE WITHOUT THE WRITTEN PERMISSION OF SV MICROWAVE, INC IS PROHIBITED.				CHECKED: DAL 06/07/16		SHEET 1 OF 3			
				APPROVED: DAL 06/07/16					




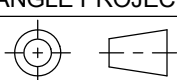
PRODUCT DATA DRAWING

REVISION HISTORY			
REV	DESCRIPTION	DATE	APPROVED
	SEE SHEET 1		



PCB CHARACTERISTICS:

PCB CORE 1:	.010" ROGERS 3203
LAYER 1 THICKNESS:	1 OZ FINISHED
PCB CORE 2:	.010" PREPREG DK= 3-4
LAYER 2 THICKNESS:	1/2 OZ
PCB CORE 3:	BALANCE TO ACHEIVE .048±.005" FR04
LAYER 3 THICKNESS:	1/2 OZ
LAYER 4 THICKNESS:	1/2 OZ

MATERIAL:	SEE NOTES	DIMENSIONS ARE IN INCHES TOLERANCES:	UNLESS OTHERWISE SPECIFIED		<div>Amphenol 2400 Centrepark West Drive, Suite 100 West Palm Beach, FL 33409</div>			
FINISH:	SEE NOTES	FRACTIONAL: $\pm 1/64$ ANGULAR: X° $\pm 1^{\circ}0'$ X°X' $\pm 15'$	1) ALL DIMENSIONS ARE IN INCHES (MILLIMETERS) 2) ALL DIMENSIONS ARE AFTER PLATING. 3) BREAK CORNERS & EDGES .005 R. MAX. 4) CHAM. 1ST & LAST THREADS. 5) SURFACE ROUGHNESS 63-MIL-STD-10. 6) DIA.'S ON COMMON CENTERS TO BE CONCENTRIC WITHIN .005 T.I.R. 7) REMOVE ALL BURRS		TITLE:			
SURFACE AREA:	N/A	DECIMAL: .X $\pm .030$.XX $\pm .010$.XXX $\pm .005$			FEATHERMATE Mk.IV EVALUATION KIT			
PROPRIETARY		INTERPRET DIMENSIONS AND TOLERANCES PER ASME Y14.5M - 1994	THIRD ANGLE PROJECTION		DRAWN:		GPF 06/07/16	
THE INFORMATION CONTAINED IN THIS DRAWING IS THE SOLE PROPERTY OF SV MICROWAVE, INC. ANY REPRODUCTION IN PART OR AS A WHOLE WITHOUT THE WRITTEN PERMISSION OF SV MICROWAVE, INC IS PROHIBITED.				CHECKED:		DAL 06/07/16		
				APPROVED:		DAL 06/07/16		
				SIZE	CAGE CODE	DWG. NO.		
				B	95077	FM Mk.IV - EVALKIT		
				SCALE: 1:1				SHEET 3 OF 3

Mouser Electronics

Authorized Distributor

Click to View Pricing, Inventory, Delivery & Lifecycle Information:

[Amphenol:](#)

[FM-EVALKIT](#)