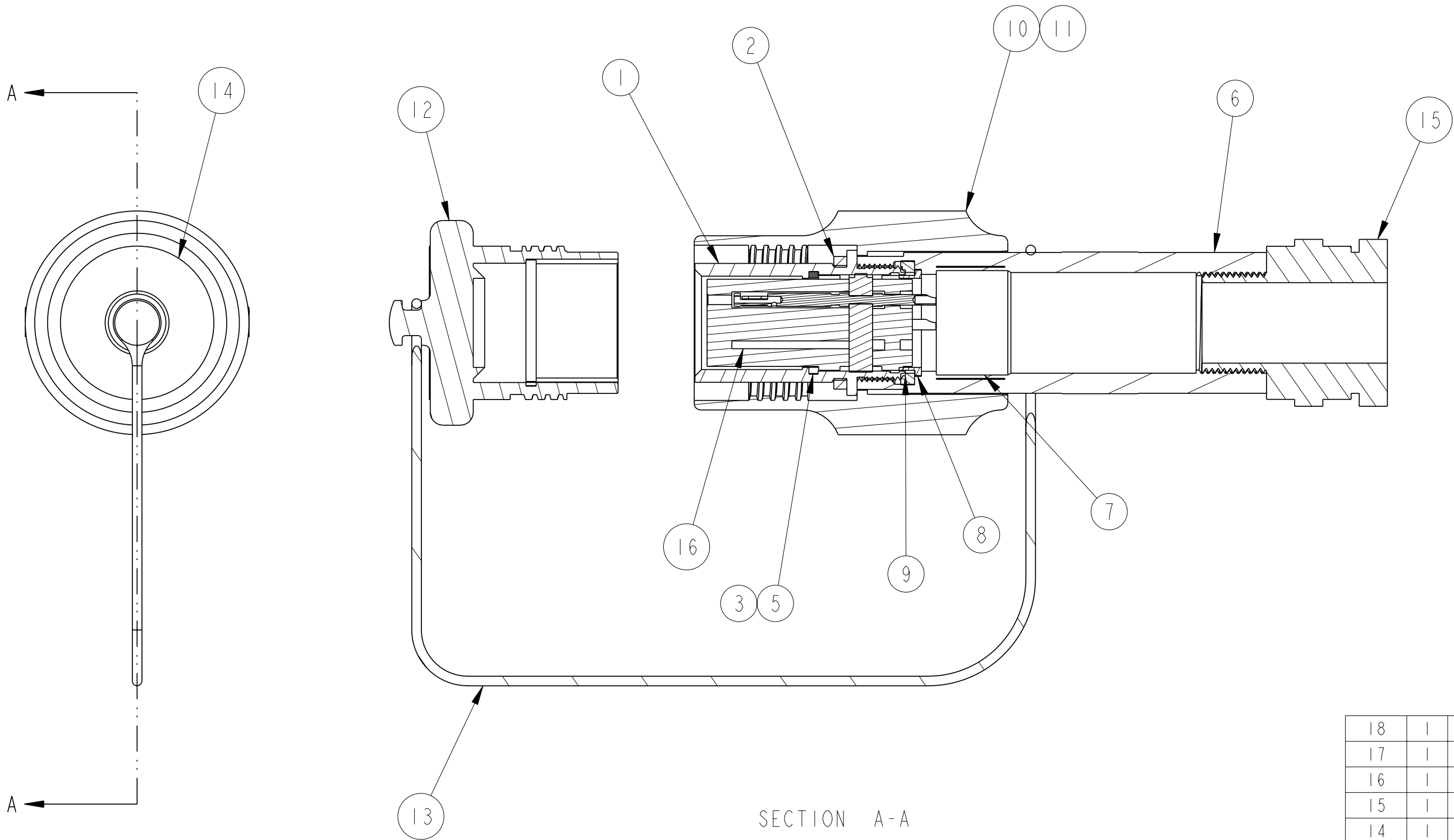


4

3

2

EX133-()-()-()		
DOCUMENT NO.		
REVISIONS		
LTR	DESCRIPTION	DATE
A	INITIAL RELEASE	1-27-06
B	ADDED NOTE #5 PER ECN #A0221-0000	3/17/06




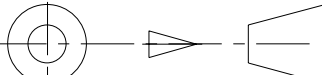
SECTION A-A

5. PART NUMBERS THAT HAVE A "P-XXXXXX" FORMAT ARE INTERNAL AMPHENOL PART NUMBERS. USE THE DESCRIPTION OF THE PART NUMBER TO DETERMINE THE PYLE CODE LOGIC.
EXAMPLE:
PART NUMBER - P-600097
DESCRIPTION - EX-13-3-C-C20-379SN-A352-NKW
4. ASSEMBLY INSTRUCTION NUMBER L-2120 TO BE INCLUDED WITH EVERY ASSEMBLY.
3. SEE SEPARATE PARTS LIST FOR COMPONENT PARTS AND QUANTITIES. SOME ITEMS NOT ALWAYS NEEDED. SEE CATALOG FOR INSERT CONFIGURATION AND KEYING.
2. LABEL TEXT NOT SHOWN FOR CLARITY TO BE PLACED ON COVER.
1. LABEL TO BE ATTACHED TO CONNECTOR AS APPROPRIATE. LABEL TO SHOW PART NUMBER (EXAMPLE: EX133B-12-355PN) AND WORK ORDER NUMBER TO BE PLACED ON COUPLING NUT.

NOTES:

THE USE OF THIS DOCUMENT IS UNLIMITED. HOWEVER, DOCUMENTS REFERENCED HEREON MAY CONTAIN LIMITED RIGHTS DATA.

PRO/ENGINEER INFORMATION	
N/A	Pro/e Model Used:
N/A	EX133B-12-355PN.ASSEM
Drawing Name:	
EX133-X-X-X	

UNLESS OTHERWISE SPECIFIED		SPECIFICATIONS		POS		QTY		PART NUMBER		DESCRIPTION		NOTE	
LINEAR DIMENSIONS ARE IN INCHES TOLERANCES: .XXXX = ±.0005 ANGLES= ±2° .XXX = ±.010 .XX = ±.03 .X = ±.1 ----- DIM. & TOL. PER ASME Y14.5M; DRM PER MIL-DTL-31000; OTHER Amphenol Stds. PER 9-3800 <div> LEGENDS: = FLAG NOTE CALL OUT REFERENCE ONLY</div>		MATERIAL SPEC.		APPROVALS		DATE		AMPHENOL CORPORATION 40-60 DELAWARE AVENUE SIDNEY, N.Y. 13838 STARLINE EX PLUG WITH CABLE GLAND					
		PROCESS SPEC.		PREPARED BY P. BRUNING		01-27-06							
				ENGINEER IN CHARGE A. POLISHAK									
				DESIGN MANAGER D. GALLUSSER									
		9-9380		DESIGN ACTIVITY GROUP C&I		U							
THIRD ANGLE PROJECTION													
<div></div>				SIZE C		CAGE CODE 49367		DOCUMENT NO. EX133-()-()-()				REV. B	
				SCALE: 1.00		REF: EX133B-12-355PN				SHEET 1 OF 2			

EX133-()-()-()

SHEET 1 OF 2

REV. B

C

B

A

FORMAT: C-JUL-REV. B

EX133-()-()-()

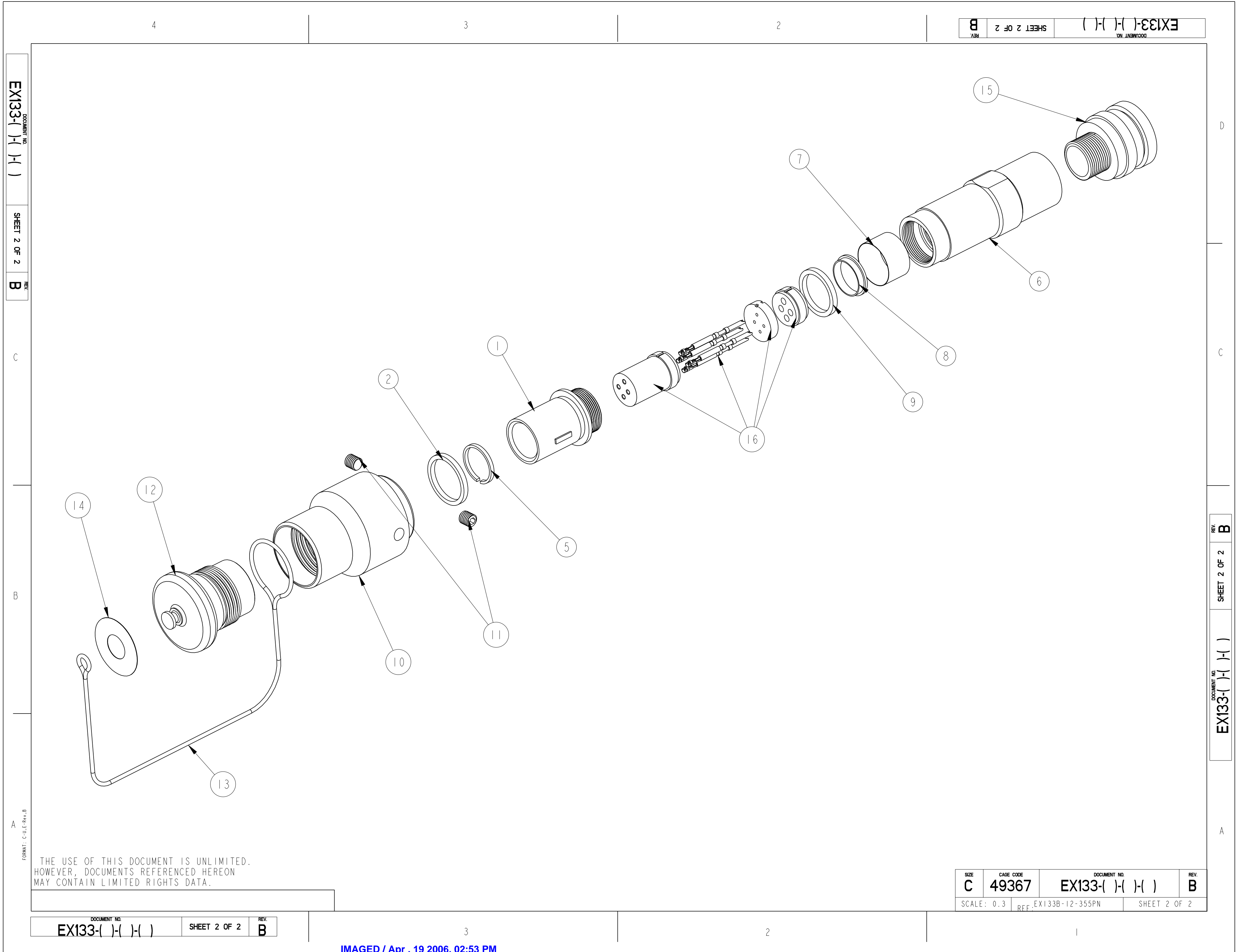
SHEET 1 OF 2

REV. B

3

2

1



4	3	2	1
EX133-()-()-()	EX133-()-()-()	EX133-()-()-()	EX133-()-()-()
SHEET 2 OF 2	SHEET 2 OF 2	SHEET 2 OF 2	SHEET 2 OF 2
REV. B	REV. B	REV. B	REV. B

SIZE	CAGE CODE	DOCUMENT NO.	REV.
C	49367	EX133-()-()-()	B
SCALE: 0.3	REF: EX133B-12-355PN	SHEET 2 OF 2	

THE USE OF THIS DOCUMENT IS UNLIMITED.
HOWEVER, DOCUMENTS REFERENCED HEREON
MAY CONTAIN LIMITED RIGHTS DATA.

IMAGED / Apr . 19 2006, 02:53 PM

Mouser Electronics

Authorized Distributor

Click to View Pricing, Inventory, Delivery & Lifecycle Information:

[Amphenol:](#)

[EX-13-3-B-12-27P-01](#) [EX-13-3-A-16-321SN](#) [EX-13-3-B-16-325SN](#)