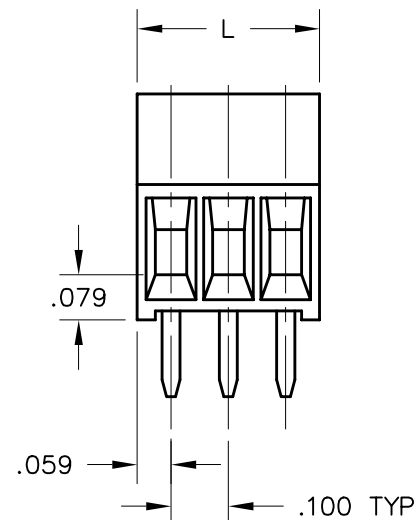
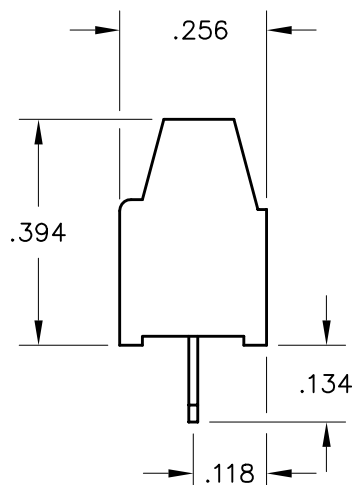


REV	ECN	APPD
—	4785	

$$L = (.100 \times \text{POSITIONS}) + .018$$

ESDMXX100

POSITIONS:
02–12



RATINGS

CURRENT – 10A
VOLTAGE – 150V
U.L. FILE NO.



RATINGS

CURRENT – 10A
VOLTAGE – 150V
CSA FILE NO.

DIN VDE 0627:1986
DIN VDE 0110–1:1989
EN 60947–1:1991
EN 60947–7–1:1992

CURRENT – 6A
VOLTAGE – 125V
TUV FILE NO.

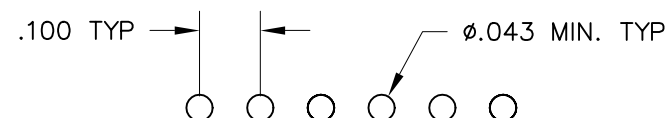
INSTALLATION RECOMMENDATIONS

WIRE RANGE: 16–30 AWG
WIRE STRIP LENGTH: .160–.200
TIGHTENING TORQUE: 1.15 LB-IN.

MATERIALS

HOUSING: POLYAMIDE 6/6, COLOR: BLACK
CONTACT: COPPER ALLOY, TIN PLATED
SCREW / CAGE CLAMP: COPPER ALLOY, NICKEL PLATED

OPERATING TEMPERATURE RANGE: –40°C TO 110°C
RECOMMENDED PCB THICKNESS: .094 MAX



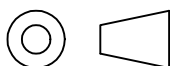
DIMENSIONS

ANSI Y14.5M
UNITS: INCHES
ACAD FILE

TOLERANCES

.XX ±.01
.XXX ±.005
ANGLES ±2°

PROJECTION



SPECIFICATION DRAWING

ENGR
B. JAWORSKI 12/01/01

CHKD

APPD



TITLE

ESDM TERMINAL BLOCK
HORIZONTAL
.100 [2.54mm] PITCH

SIZE

A

DWG NO.

ESDM02100

REV

—

CODE: 58982

SCALE: NONE

SHEET 1 OF 1

ORIGINAL
STAMPED
IN RED

THIS DOCUMENT CONTAINS
PROPRIETARY INFORMATION WHICH
IS THE CONFIDENTIAL PROPERTY
OF PCD, INC. PEABODY, MA, USA

Mouser Electronics

Authorized Distributor

Click to View Pricing, Inventory, Delivery & Lifecycle Information:

[Amphenol:](#)

[ESDM04100](#)