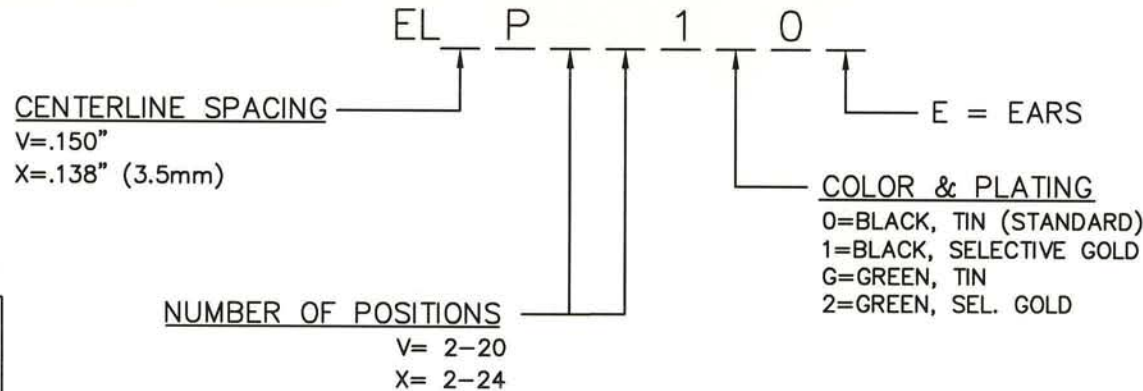


# ELV/XP SERIES PART NUMBERING SCHEME

REV	ECN	APPD
-	3624	JEC 1/18/99
A	3865	JEC 11/9/99
B	4661	IQ 11/26/01
C	5742	2/12/28/05



## RATINGS

CURRENT - 12A  
VOLTAGE - 300V  
U.L. FILE NO. E83421



## RATINGS

CURRENT - 12A  
VOLTAGE - 300V  
CSA FILE NO. LR69703

CONSULT PCD FOR PART NO. AND  
AVAILABILITY OF FOLLOWING OPTIONS:

- \* CUSTOM COLORS
- \* CUSTOM MARKING
- \* CUSTOM KEYING
- \* SELECTIVE CONTACT LOADING

DIN VDE 0627:1986  
DIN VDE 0110-1:1989  
EN 60947-1:1991  
EN 60947-7-1:1992

CURRENT - 12A  
VOLTAGE - 300 V  
TUV FILE NO. 20396

**INSTALLATION  
RECOMMENDATIONS:**  
WIRE RANGE: AWG #16-28, STRANDED  
OR SOLID  
WIRE STRIP LENGTH: .250"  
TIGHTENING TORQUE: 2.2 LB-IN.

**MATERIALS:**  
HOUSING: PA 4/6, UL 94 V-0  
CONTACT: COPPER ALLOY, OPTIONAL FINISH  
SCREW: COPPER ALLOY, NICKEL FINISH  
WIRE CLAMP: COPPER ALLOY, NICKEL FINISH

**MAX OPERATING TEMPERATURE:**  
125°C

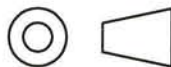
## DIMENSIONS

ANSI Y14.5M  
UNITS: INCHES  
ACAD FILE

## TOLERANCES

.XX ±.01  
.XXX ±.005  
ANGLES ±2°

## PROJECTION



## Amphenol Pcd SPECIFICATION DRAWING

ENGR  
I. QUINN 12/21/99

CHKD  
J. CAHALY 1/18/99

APPD  
J. CAHALY 1/18/99

## TITLE

ELV/ELX SERIES  
PLUGGABLE TERMINAL  
BLOCK, RIGHT ANGLE

ORIGINAL  
STAMPED  
IN RED

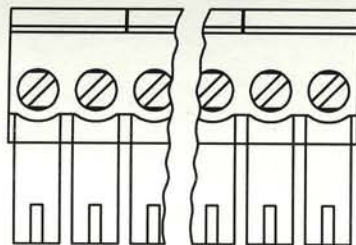
THIS DOCUMENT CONTAINS  
PROPRIETARY INFORMATION WHICH  
IS THE CONFIDENTIAL PROPERTY  
OF AMPHENOL PCD INC. PEABODY, MA

SIZE  
A

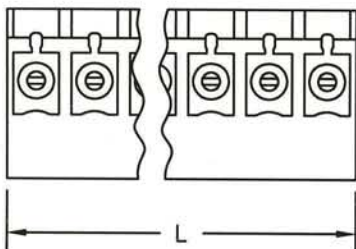
DWG NO.  
ELVP02100

REV  
C

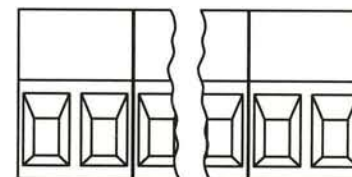
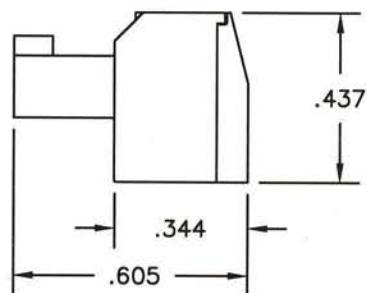
CODE: 58982 SCALE: NONE SHEET 1 OF 2



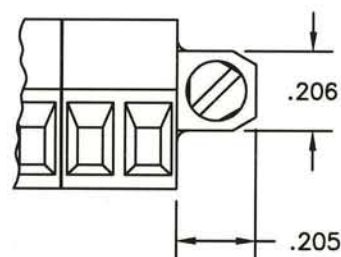
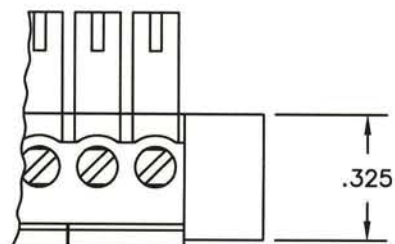
## STANDARD R/A PLUG



L=NUM OF POS X CL SPACING



## MOUNTING EAR CONFIGURATION



SIZE

DWG NO.

DOC REV

A

ELVP02100

C

CODE: 58982

SCALE: NONE

SHEET 2 OF 2

# Mouser Electronics

Authorized Distributor

Click to View Pricing, Inventory, Delivery & Lifecycle Information:

[Amphenol:](#)

[ELVP03100](#) [ELVP05100](#)