

REV	ECN	DESCRIPTION	APP'D
1			

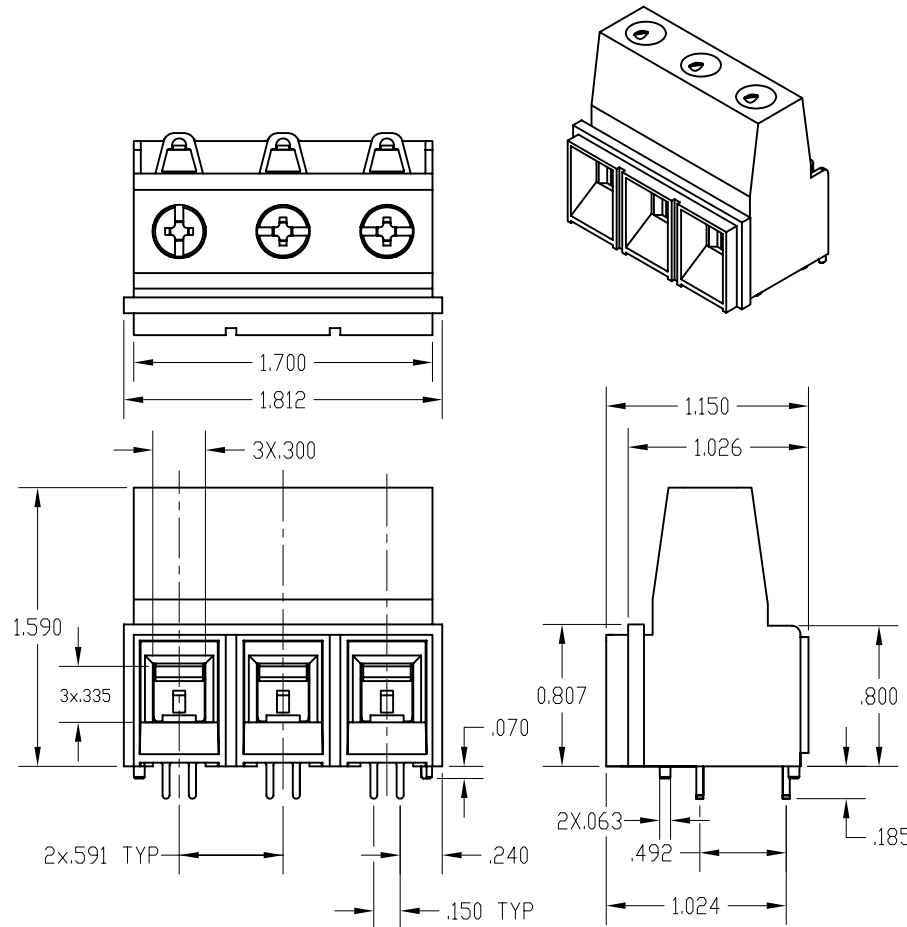


PATINGS
CURRENT-75A PENDING
VOLTAGE-300V PENDING
U.L. FILE NO. E83421

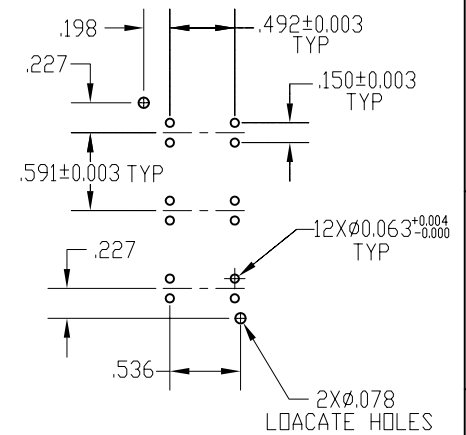


PATINGS
CURRENT-75A PENDING
VOLTAGE-PENDING
CSA FILE NO:LR69703

DIN VDE 0627:1986
DIN VDE 0110-1:1989
EN 60947-1:1991
EN 60947-7-1:1992
CURRENT-75A PENDING
VOLTAGE- PENDING
TUV FILE NO. 20396



PRINTED CIRCUIT BOARD CONFIGURATION



RECOMMENDED PCB THICKNESS:
0.062±0.008

INSTALLATION RECOMMENDATIONS:

WIRE RANGE: AWG#4-16AWG, STD OR SOLID
WIRE STRIP LENGTH: 0.630"(16.0MM)
TIGHTENING TORQUE: 20LB-IN.

MATERIAL:

HOUSING: PA,UL94V-0,BLACK
CONTACT: COPPER ALLOY, TIN PLATING PER ASTM B-545
SCREW: STEEL,ZINC PLATING PER ASTM B63398
WIRE CLAMP: STEEL ZINC PLATING PER ASTM B63398
OPERATING TEMPERATURE: -40°-120°

DIMENSIONS	TOLERANCES	PROJECTION	Amphenol Pcd SPECIFICATION DRAWING		TITLE ELMP TERMINAL BLOCK 3 POS 15MM (0.591) CL			
ANSI Y14.5M UNITS: INCHES Pro/E FILE	.XX ±.001 .XXX ±.0001 ANGLES ±0.5°		DRWN					
ORIGINAL	THIS DOCUMENT CONTAINS PROPRIETARY INFORMATION WHICH IS THE CONFIDENTIAL PROPERTY OF AMPHENOL PCD, BEVERLY, MA		ENGR	SIZE A	DWG NO. ELMP03051_C	REV 1		
			APPD	CODE: 58982	SCALE: NONE	SHEET 1 OF 1		

Mouser Electronics

Authorized Distributor

Click to View Pricing, Inventory, Delivery & Lifecycle Information:

[Amphenol:](#)

[ELMP03051](#)