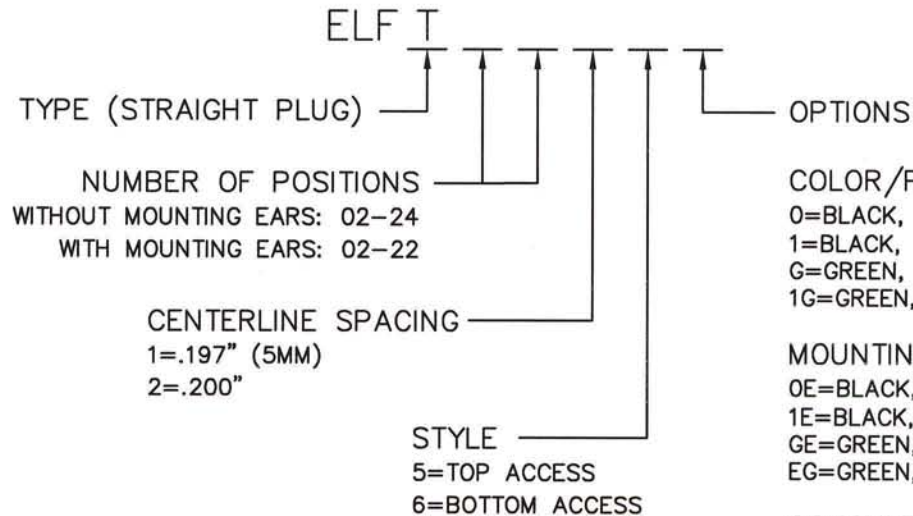


ELFT SERIES PART NUMBERING SCHEME

REV	ECN	APPD
-	3600	JEC 12/11/98
A	4686	JN 12/28/05



COLOR/PLATING
0=BLACK, TIN (STANDARD)
1=BLACK, SELECTIVE GOLD
G=GREEN, TIN
1G=GREEN, SEL. GOLD

MOUNTING EARS
0E=BLACK, TIN
1E=BLACK, SEL. GOLD
GE=GREEN, TIN
EG=GREEN, SEL. GOLD

CONSULT PCD FOR PART NO. AND
AVAILABILITY OF FOLLOWING OPTIONS:

- * CUSTOM COLORS
- * CUSTOM MARKING
- * CUSTOM KEYING
- * SELECTIVE CONTACT LOADING

RA
RATINGS
CURRENT - 15A
VOLTAGE - 300V
U.L. FILE NO. E83421

SP
RATINGS
CURRENT - 15A
VOLTAGE - 300V
CSA FILE NO. LR69703

DIN VDE 0627:1986
DIN VDE 0110-1:1989
EN 60947-1:1991
EN 60947-7-1:1992

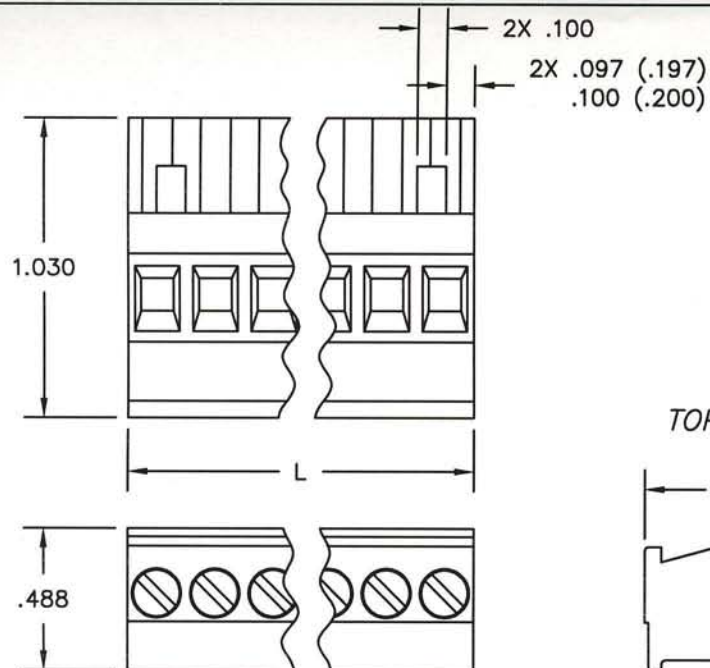
CURRENT - 15A
VOLTAGE - 300 V
TUV FILE NO. 20396

INSTALLATION
RECOMMENDATIONS:
WIRE RANGE: AWG #14-26, STRANDED
OR SOLID; AWG #12 STRANDED
WIRE STRIP LENGTH: .310"
TIGHTENING TORQUE: 7 LB-IN.

MATERIALS:
HOUSING: PPO, UL 94 V-0
CONTACT: COPPER ALLOY, OPTIONAL FINISH
SCREW: STEEL, NICKEL FINISH
WIRE CLAMP: COPPER ALLOY, NICKEL FINISH

MAX OPERATING TEMPERATURE:
105°C

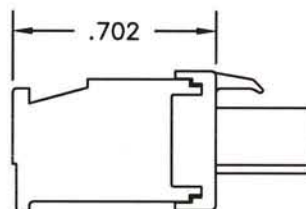
DIMENSIONS ANSI Y14.5M UNITS: INCHES ACAD FILE	TOLERANCES .XX ±.01 .XXX ±.005 ANGLES ±2°	PROJECTION 	Amphenol Pcd SPECIFICATION DRAWING		TITLE ELFT SERIES PLUGGABLE TERMINAL BLOCK, STRAIGHT				
			ENGR J. WILKINSON 11/8/98						
ORIGINAL STAMPED IN RED	THIS DOCUMENT CONTAINS PROPRIETARY INFORMATION WHICH IS THE CONFIDENTIAL PROPERTY OF AMPHENOL PCD INC. PEABODY, MA		CHKD A. PATRIE 12/4/98		SIZE A	DWG NO. ELFT02150		REV B	
			APPD J. CAHALY 12/11/98						
					CODE: 58982		SCALE: NONE	SHEET 1 OF 2	



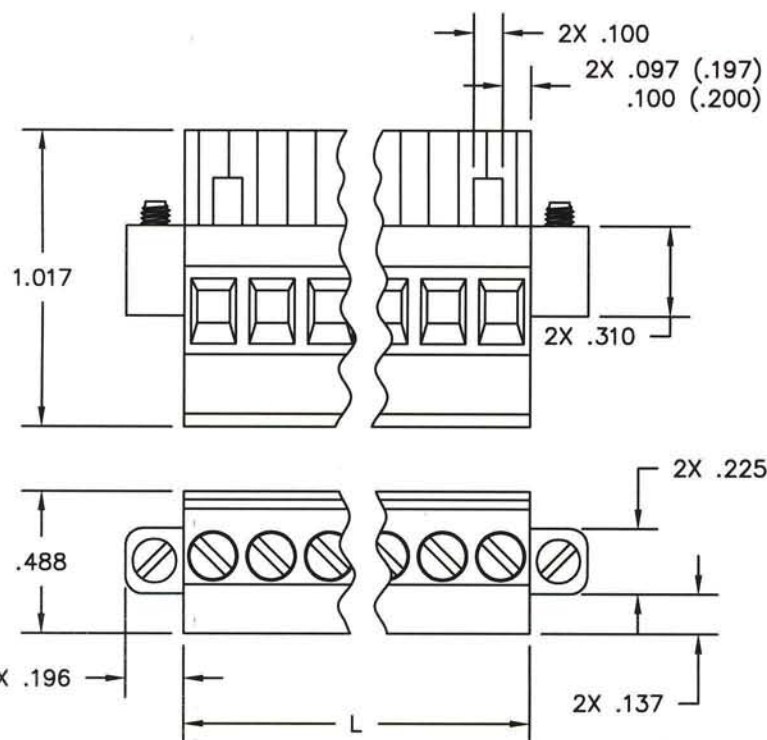
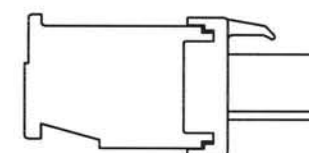
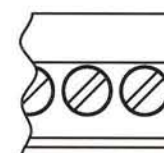
WITHOUT MOUNTING EARS

L=NUM OF POS X CL SPACING

TOP ACCESS



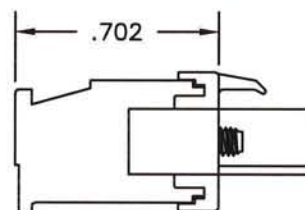
BOTTOM ACCESS



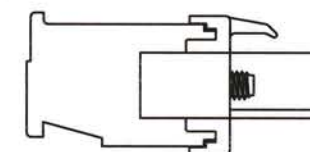
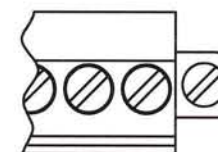
WITH MOUNTING EARS

L=NUM OF POS X CL SPACING

TOP ACCESS



BOTTOM ACCESS



SIZE

A

DWG NO.

ELFT02150

REV

B

CODE: 58982

SCALE: NONE

SHEET 2 OF 2

Mouser Electronics

Authorized Distributor

Click to View Pricing, Inventory, Delivery & Lifecycle Information:

[Amphenol:](#)

[ELFT08260E](#)