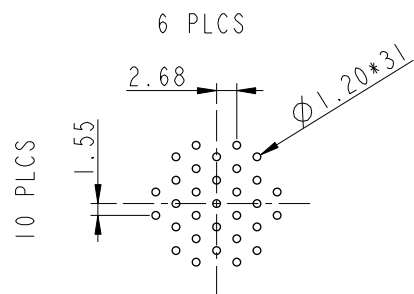
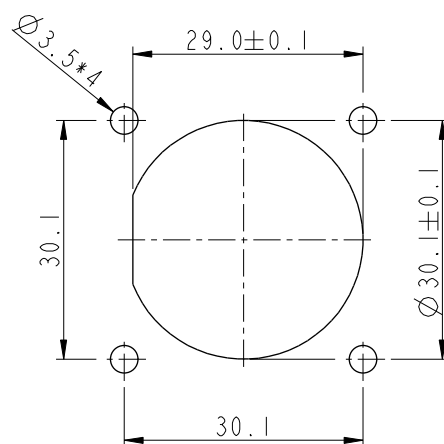
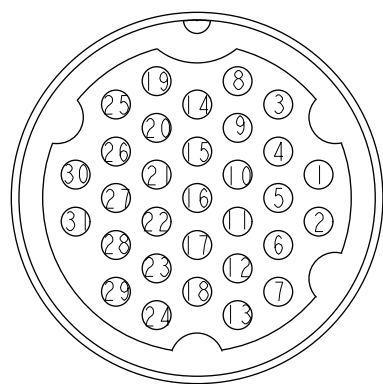
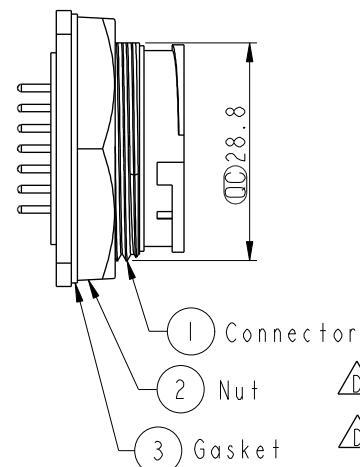
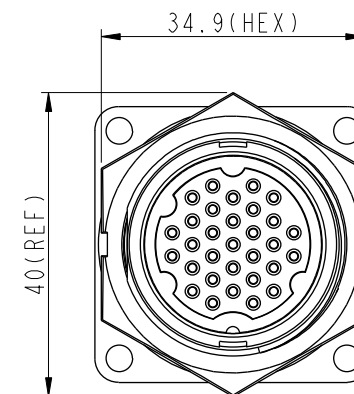
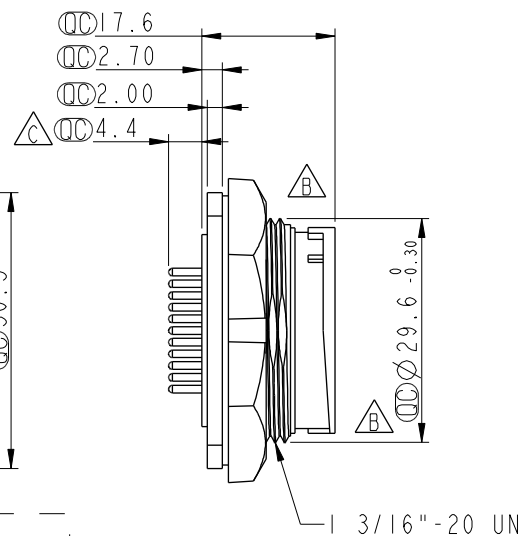
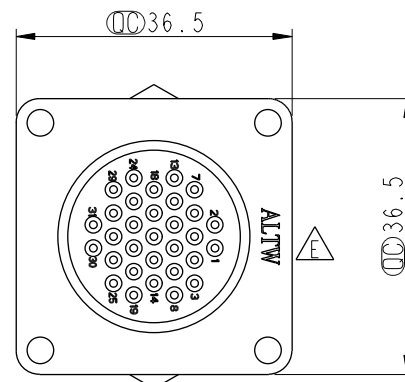


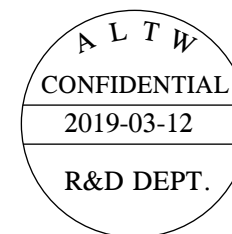
REV.	ECN NO.	DATE	SIGN	DESCRIPTION
D	LEN-890121	2008/09/25	Ivan	Add notes
E	LEN14B0150	2014/11/06	Ruru	Change Logo LTW To ALTW
F	CI90314	2019/03/12	Ruru	Modify Note



31 Pin Male Connector
Female Pin PCB Layout



Recommended
Panel Cut-Out



Note: $\triangle F$
* ϕ Important Dimension.
* Waterproof Rate: IP67, Unmated
* Housing: Thermoplastic, Black
* Pin: Copper Alloy, Gold Plated
* Nut: Thermoplastic, Black
* Gasket: Rubber, Black
* Use with waterproof cap or dust cap
Panel Thickness Max: 2.5mm
* Use without waterproof cap or dust cap
Panel Thickness Max: 3.5mm
* Gasket and Nut are packed separately
in PE bags.

UNIT:mm		TITLE Panel Lock 31Pin M Conn F Pin		ITEM NO ED-31PMFP-LS7001		DRAWN BY Ruru		DATE 2019-03-12	
TOLERANCE .X ± 0.25 .XX ± 0.1 .XXX ± 0.05 ANGLES $\pm 1^\circ$		SCALE 1:1	SIZE A4	SHEET 1	DWG NO ED-31PMFP-LS7001	CHECKED BY Rita	DATE 2019-03-12		
REV. F		WC-REV. A.2	ϕ Inspection item		CUSTOMER ALTW	APPROVED BY Max	DATE 2019-03-12		

Amphenol LTW
安費諾亮泰企業股份有限公司

Mouser Electronics

Authorized Distributor

Click to View Pricing, Inventory, Delivery & Lifecycle Information:

[Amphenol:](#)

[ED-31PMFP-LS7001](#)