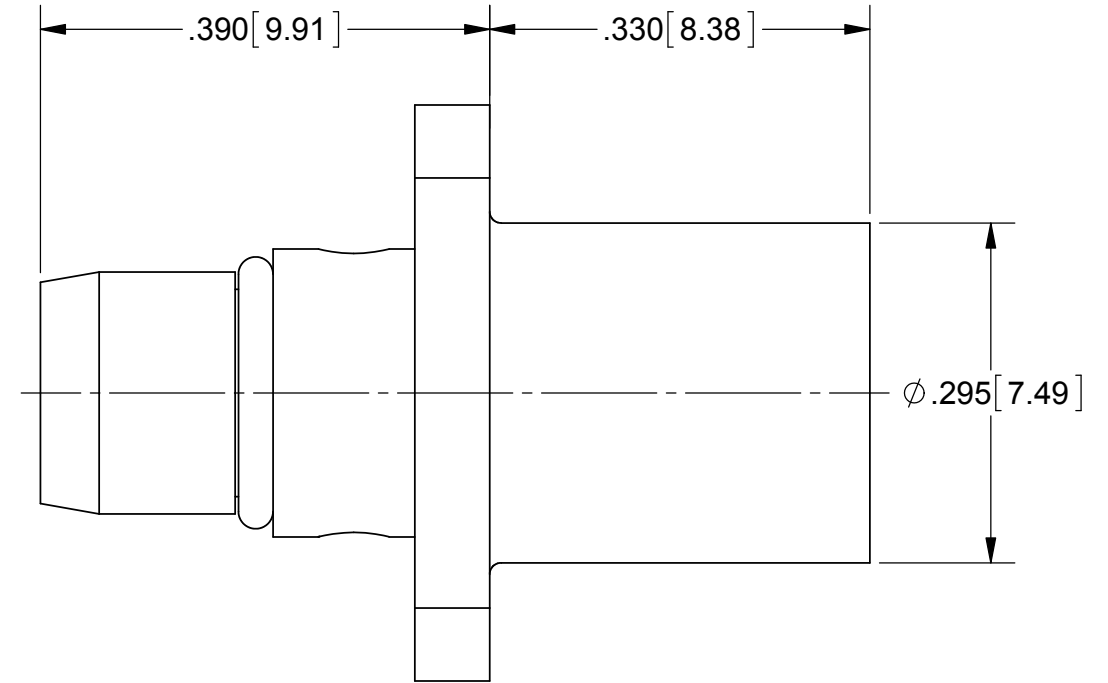
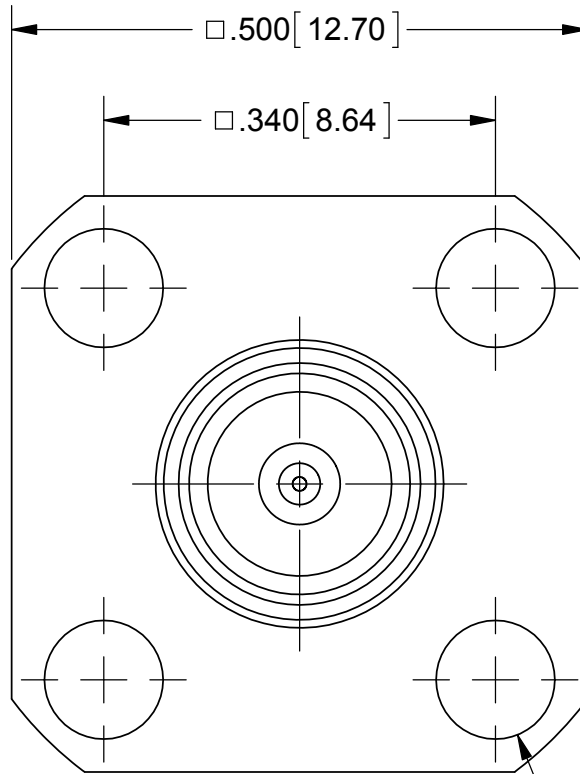
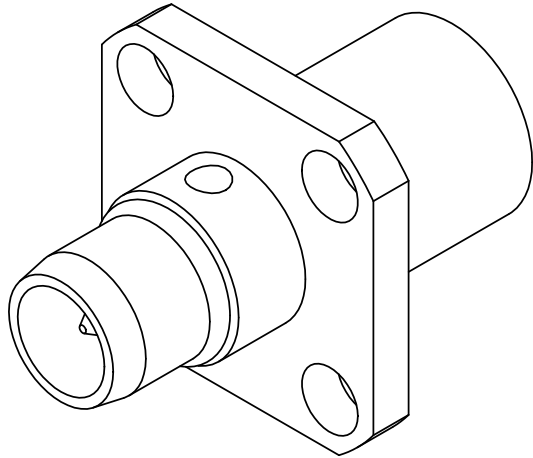


ROHS COMPLIANT

# PRODUCT DATA DRAWING

REVISION HISTORY			
REV	DESCRIPTION	DATE	APPROVED
B	DCN 41747	10/15	ELA



**MATERIAL:**

BODIES & CAP:

STAINLESS STEEL PER AMS-5640,  
ALLOY UNS S30300, TYPE 1

CONTACTS:

BERYLLIUM COPPER PER ASTM B196,  
ALLOY No. UNS C17300, TD04

INSULATORS:

PTFE PER ASTM D1710, TYPE I, GRADE 1, CLASS B

O-RING:

## FLUOROCARBON RUBBER PER AMS 7276

RESISTOR ELEMENT:

## ALUMINA SUBSTRATE WITH NICHROME RESISTOR

## FINISH:

EXTERNAL BODY &  
CAP:

## PASSIVATED PER AMS-2700

INTERNAL BODY:

GOLD PER ASTM B 488, TYPE I,  
CODE C, CLASS 1.52, OVER NICKEL  
PER AMS-QQ-N-290, CLASS 1, .00005" MIN.


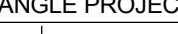
CONTACTS:

GOLD PER ASTM B488, TYPE II,  
CODE C, CLASS 1.27, OVER NICKEL  
PER AMS-QQ-N-290, CLASS 1, .00005" MIN.

## PERFORMANCE:

IMPEDANCE:  
FREQ. RANGE:  
VSWR:

50 OHMS  
DC TO 18.0 GHz  
1.20:1 DC TO 18.0 GHz

MATERIAL:	SEE NOTES	DIMENSIONS ARE IN INCHES TOLERANCES:  FRACTIONAL: ±1/64    ANGULAR: X° ±1°0' X°X' ±15'  DECIMAL: .X    ±.030 .XX   ±.010 .XXX ±.005  INTERPRET DIMENSIONS AND TOLERANCES PER ASME Y14.5M - 1994	UNLESS OTHERWISE SPECIFIED		<div> 2400 Centrepark West Drive, Suite 100 West Palm Beach, FL 33409</div>	
FINISH:	SEE NOTES		1) ALL DIMENSIONS ARE IN INCHES [MILLIMETERS] 2) ALL DIMENSIONS ARE AFTER PLATING. 3) BREAK CORNERS & EDGES .005 R. MAX. 4) CHAM. 1ST & LAST THREADS. 5) SURFACE ROUGHNESS 63-MIL-STD-10. 6) DIA.'S ON COMMON CENTERS TO BE CONCENTRIC WITHIN .005 T.I.R. 7) REMOVE ALL BURRS			
SURFACE AREA:	N/A					
PROPRIETARY		<div></div>	DRAWN:	DAL 10/07/15	TITLE:  BMA MALE 4 HOLE FLANGE TERMINATION	
THE INFORMATION CONTAINED IN THIS DRAWING IS THE SOLE PROPERTY OF SV MICROWAVE, INC. ANY REPRODUCTION IN PART OR AS A WHOLE WITHOUT THE WRITTEN PERMISSION OF SV MICROWAVE, INC IS PROHIBITED.			CHECKED:	CCC 04/12/05		
			APPROVED:	CCC 04/12/05		
			SIZE	CAGE CODE	DWG. NO.	
			B	95077	SF8017-6001	
			SCALE: 6:1			SHEET 1 OF 1

# Mouser Electronics

Authorized Distributor

Click to View Pricing, Inventory, Delivery & Lifecycle Information:

[Amphenol:](#)

[SF8017-6001](#)