

ROHS COMPLIANT

PRODUCT DATA DRAWING

REVISION HISTORY			
REV.	DESCRIPTION	DATE	APPROVED
-	NRN 40631	05/16	STW

F

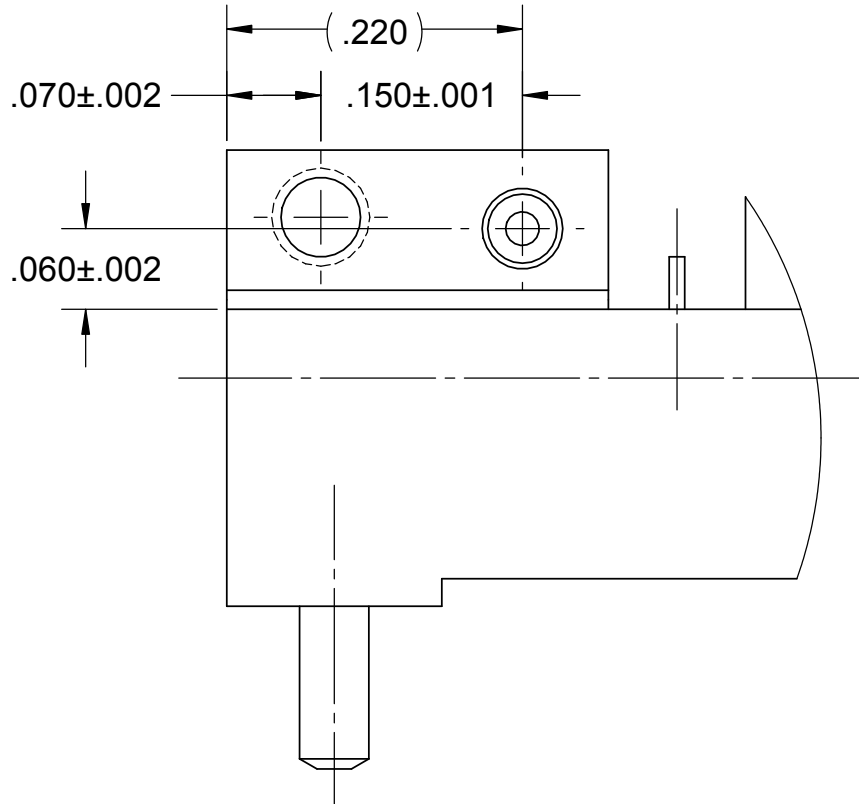
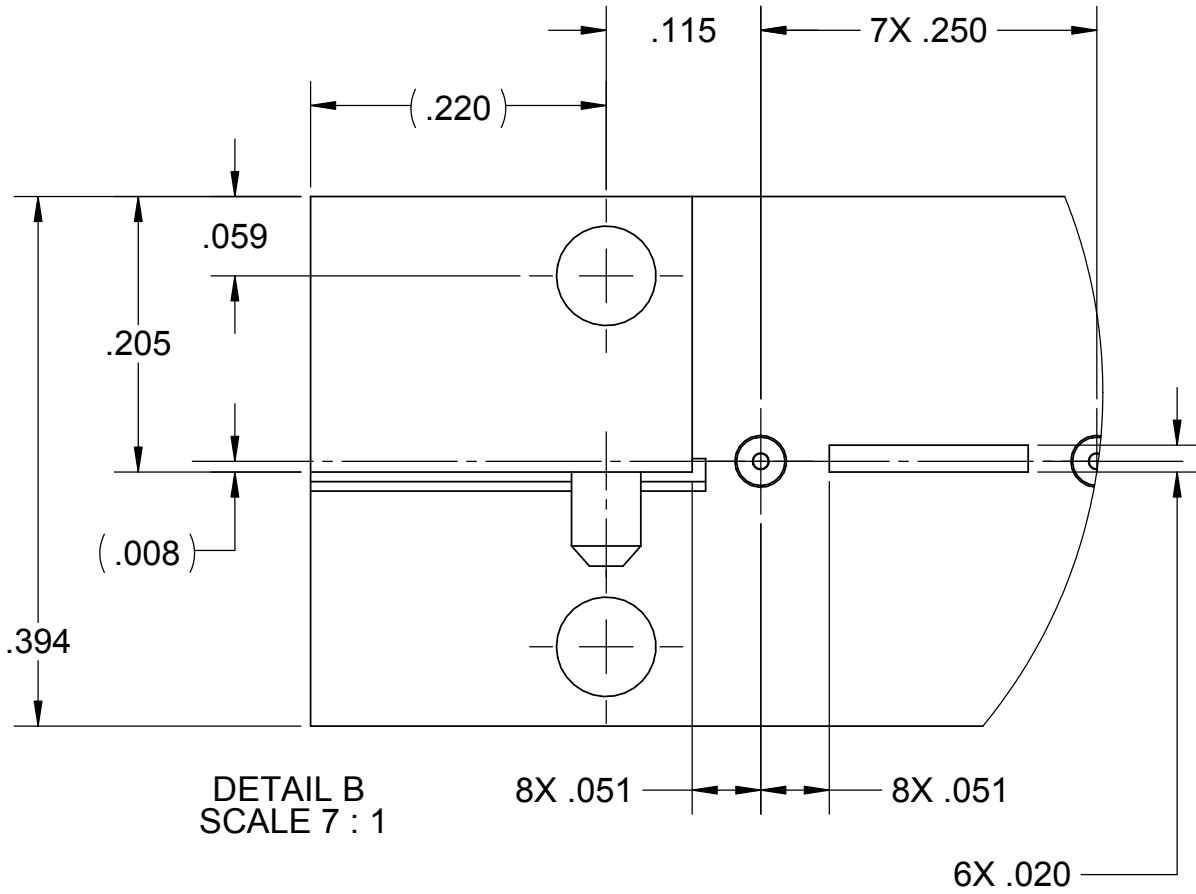
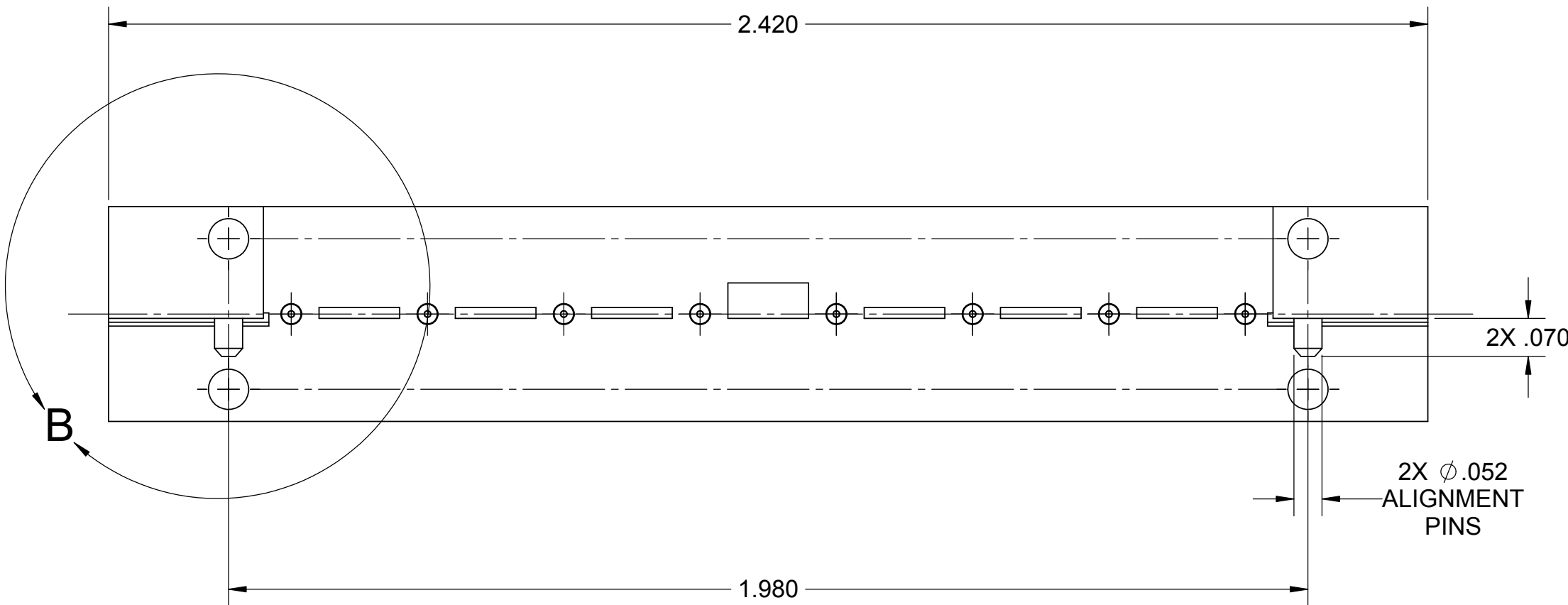
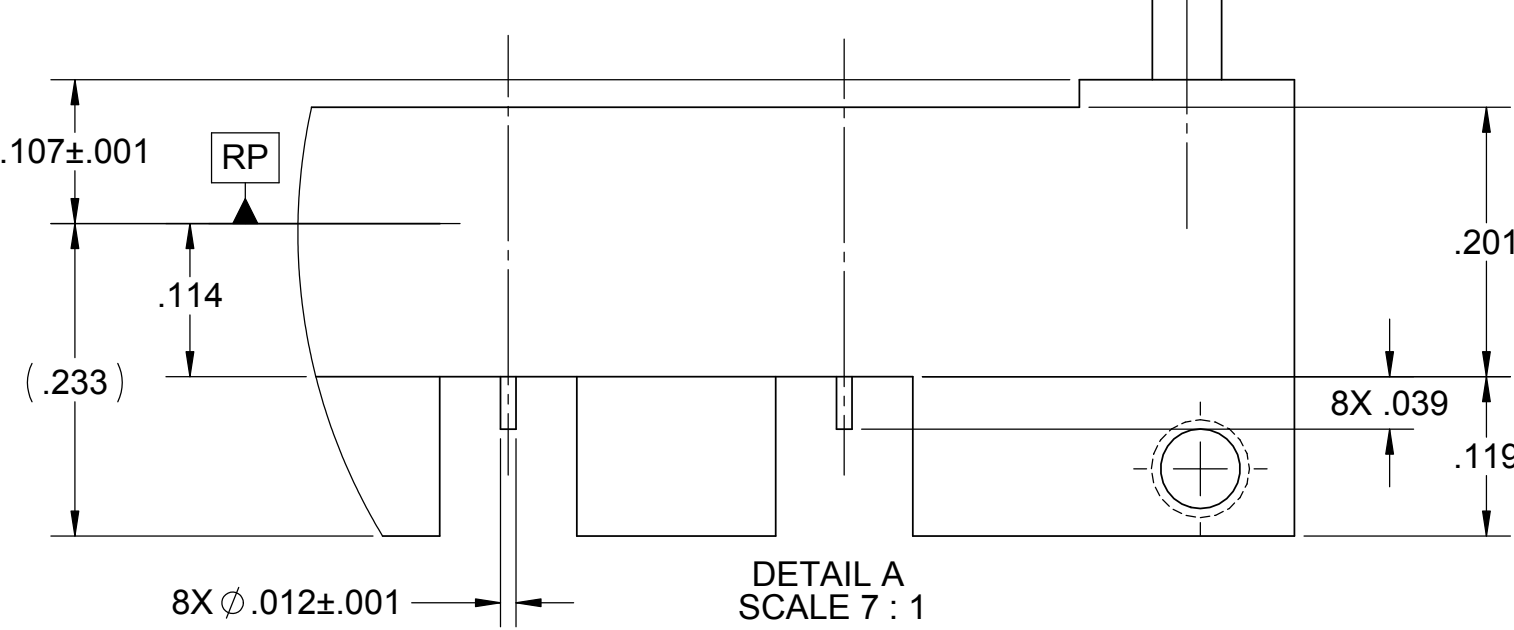
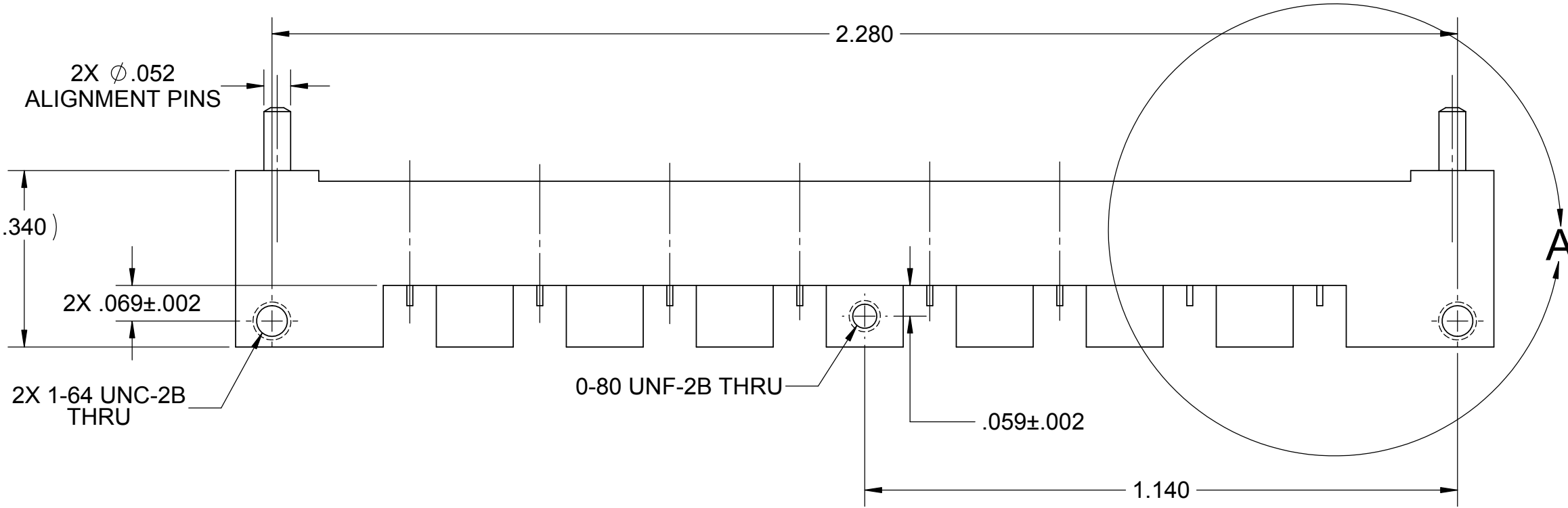
E

D

C

B

A



MATERIAL:

BODY & SHROUDS: STAINLESS STEEL PER AMS-5640, ALLOY UNS S30300, TYPE 1; OR ASTM A582 TYPE 303, COND. A

CONTACTS: BERYLLIUM COPPER PER ASTM B196, ALLOY No. UNS C17300, TD04

INSULATORS: PTFE PER ASTM D1710, TYPE I, GRADE 1, CLASS B

FINISH:


BODY, SHROUDS, & CONTACTS: GOLD PER ASTM B488, TYPE II, CODE C, CLASS 0.76, OVER NICKEL PER AMS-QQ-N-290, CLASS 1, .00010" MIN.

PERFORMANCE:

IMPEDANCE: 50 OHMS
FREQ. RANGE: DC TO 65 GHz.

NOTES:

1. FOR A FOOTPRINT RECOMMENDATION SPECIFIC TO YOUR PCB, PLEASE CONTACT US AT applications@svmicro.com

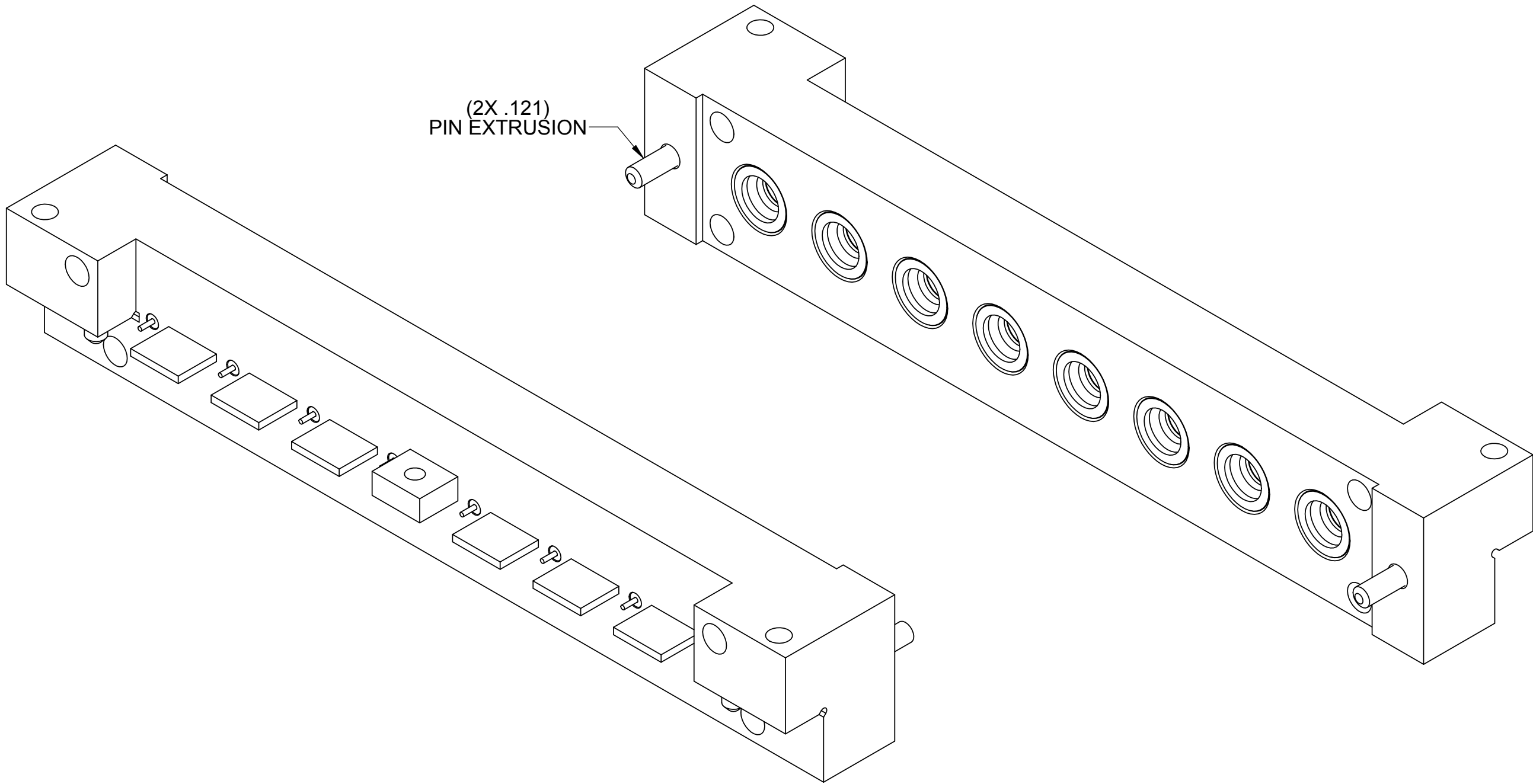
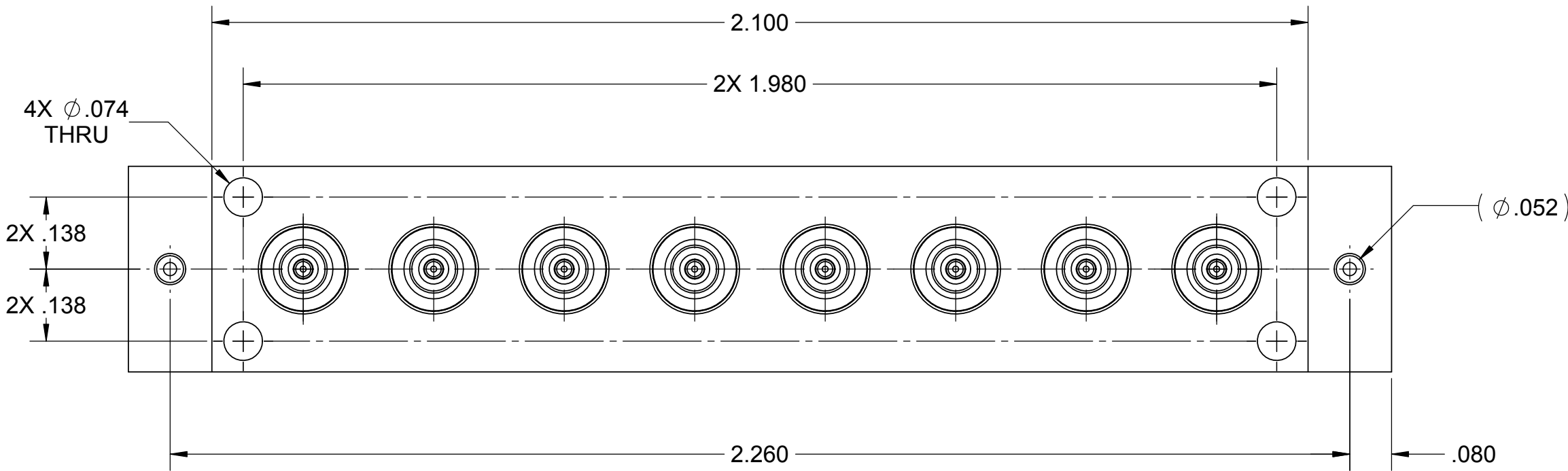
MATERIAL:	SEE NOTES	DIMENSIONS ARE IN INCHES TOLERANCES: ANGULAR: ±1° ONE PLACE DECIMAL ±.030 TWO PLACE DECIMAL ±.010 THREE PLACE DECIMAL ±.005 INTERPRET DIMENSIONS AND TOLERANCES PER ASME Y14.5M - 1994	UNLESS OTHERWISE SPECIFIED: 1. ALL DIMENSIONS ARE AFTER PLATING. 2. BREAK CORNERS & EDGES R.005 MAX. 3. CHAMFER 1ST AND LAST THREAD. 4. SURFACE ROUGHNESS 63 PER MIL-STD-10. 5. DIA'S ON COMMON CENTERS TO BE CONCENTRIC WITHIN .005 T.I.R. 6. REMOVE ALL BURRS.	SV Microwave, Inc. [®] 2400 Centrepark West Drive, Suite 100 West Palm Beach, FL 33409			
FINISH:	SEE NOTES			TITLE: SMPM FD MALE 8-PORT EDGE LAUNCH			
DO NOT SCALE DRAWING							
PROPRIETARY				THIRD ANGLE PROJECTION	DRAWN:	FED 05/27/16	
THE INFORMATION CONTAINED IN THIS DRAWING IS THE SOLE PROPERTY OF SV MICROWAVE, INC. ANY REPRODUCTION IN PART OR AS A WHOLE WITHOUT THE WRITTEN PERMISSION OF SV MICROWAVE, INC. IS PROHIBITED.					CHECKED:	STW 05/27/16	
					APPROVED:	STW 05/27/16	
					E.M. SIMULATION:		SCALE: 4:1
					SHEET 1 OF 2		

ROHS COMPLIANT

PRODUCT DATA DRAWING

REVISION HISTORY

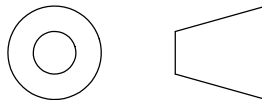
REV.	DESCRIPTION	DATE	APPROVED
	SEE SHEET 1		



MATERIAL:	SEE NOTES
FINISH:	SEE NOTES
DO NOT SCALE DRAWING	
PROPRIETARY	
THE INFORMATION CONTAINED IN THIS DRAWING IS THE SOLE PROPERTY OF SV MICROWAVE, INC. ANY REPRODUCTION IN PART OR AS A WHOLE WITHOUT THE WRITTEN PERMISSION OF SV MICROWAVE, INC. IS PROHIBITED.	

DIMENSIONS ARE IN INCHES
TOLERANCES:
ANGULAR: $\pm 1^\circ$
ONE PLACE DECIMAL $\pm .030$
TWO PLACE DECIMAL $\pm .010$
THREE PLACE DECIMAL $\pm .005$
INTERPRET DIMENSIONS AND TOLERANCES PER ASME Y14.5M - 1994

THIRD ANGLE PROJECTION



UNLESS OTHERWISE SPECIFIED:
1. ALL DIMENSIONS ARE AFTER PLATING.
2. BREAK CORNERS & EDGES R.005 MAX.
3. CHAMFER 1ST AND LAST THREAD.
4. SURFACE ROUGHNESS 63 PER MIL-STD-10.
5. DIA'S ON COMMON CENTERS TO BE CONCENTRIC WITHIN .005 T.I.R.
6. REMOVE ALL BURRS.

DRAWN:	FED 05/27/16
CHECKED:	STW 05/27/16
APPROVED:	STW 05/27/16
E.M. SIMULATION:	

SV Microwave, Inc. 2400 Centrepark West Drive, Suite 100 West Palm Beach, FL 33409			
TITLE: SMPM FD MALE 8-PORT EDGE LAUNCH			
SIZE C	CAGE CODE 95077	DWG. NO. 3211-60181	
SCALE: 4:1			SHEET 2 OF 2

Mouser Electronics

Authorized Distributor

Click to View Pricing, Inventory, Delivery & Lifecycle Information:

[Amphenol:](#)

[3211-60181](#)