

PRODUCT DATA DRAWING

CAD
GENERATED
DRAWING

DCN
CONTROLLED
DOCUMENT

DWG. NO.
8018-6174

MATERIAL :

BODY,
PRESS CAP &
COUPLING NUT: STAINLESS STEEL PER AMS-5640

LOCK RING
& CONTACT: BERYLLIUM COPPER PER ASTM B196

RIVET: BRASS PER ASTM B16

INSULATOR: PTFE PER ASTM D1710

GASKET: SILICONE RUBBER PER ZZ-R-765,
CLASS IIB, GRADE 50/60

RESISTOR ELEMENT: ALUMINA SUBSTRATE WITH
NICHROME RESISTOR

FINISH :

BODY: GOLD PER ASTM B 488, TYPE I,
GRADE C, CLASS 1.27; OVER NICKEL
PER AMS-QQ-N-290, CLASS 1

PRESS CAP &
COUPLING NUT: GOLD PER ASTM B 488, TYPE I,
GRADE C, CLASS .50; OVER NICKEL
PER AMS-QQ-N-290, CLASS I

CONTACT: GOLD PER ASTM B 488, TYPE II,
GRADE C, CLASS 1.52; OVER NICKEL
PER AMS-QQ-N-290, CLASS 1

RIVET: NICKEL PER AMS-QQ-N-290, CLASS 1
GRADE G. FINISH: SEMI-BRIGHT

PERFORMANCE :

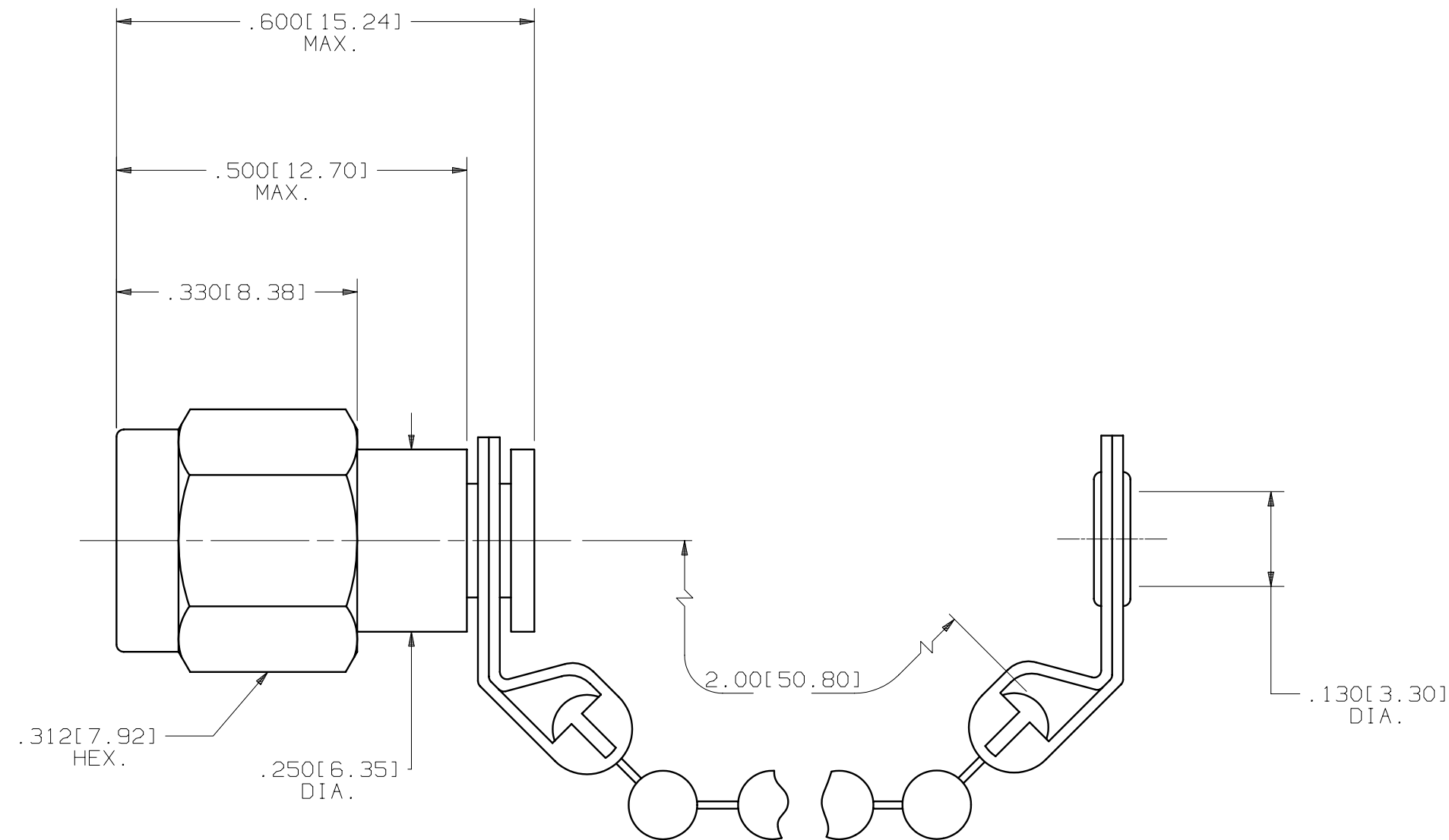
IMPEDANCE: 50 OHMS

FREQ. RANGE: DC TO 18.0 GHz

VSWR: 1.30:1 DC TO 18 GHz

OPERATING TEMP.: -55°C TO +125°C

AVG. POWER: 1 WATT



SYM.	DESCRIPTION	DATE	APPR.	UNLESS OTHERWISE SPECIFIED: 1)ALL DIMENSIONS ARE AFTER PLATING. 2)BREAK CORNERS & EDGES .005 R.MAX. 3)CHAM. 1st & LAST THDS. 4)SURFACE ROUGHNESS 63 J MIL-STD-10. 5)DIAS. ON COMMON CENTERS TO BE CONCENTRIC WITHIN .005 T.I.R. 6)REMOVE ALL BURRS.	DIMENSIONS ARE IN INCHES TOLERANCES:			SV Microwave, Inc. 2400 Centrepark West Drive, Suite 100 West Palm Beach, FL 33409
					DECIMALS .X ±.030 .XX ±.015 .XXX ±.005	FRACTIONAL ±1/64	ANGULAR X° ±1°0' X°X' ±15'	
-	REL.DCN 28574	07/02	STW	DRAWN: MEB 07/03/02 CHECKED: STW 07/03/02 APPROVED: STW 07/03/02	MATERIAL: SEE ABOVE		□" AREA:	TITLE: SMA PLUG TERMINATION WITH BEADED CHAIN
A	REV.DCN 29948	05/03	STW		FINISH: SEE ABOVE		N/A	
B	REV.DCN 30711	11/03	STW					
C	REV.DCN 31895	12/04	CCC					
					SIZE B	CAGE NO. 95077	SCALE 5X	DWG.NO. 8018-6174

Mouser Electronics

Authorized Distributor

Click to View Pricing, Inventory, Delivery & Lifecycle Information:

[Amphenol:](#)

[8018-6174](#)