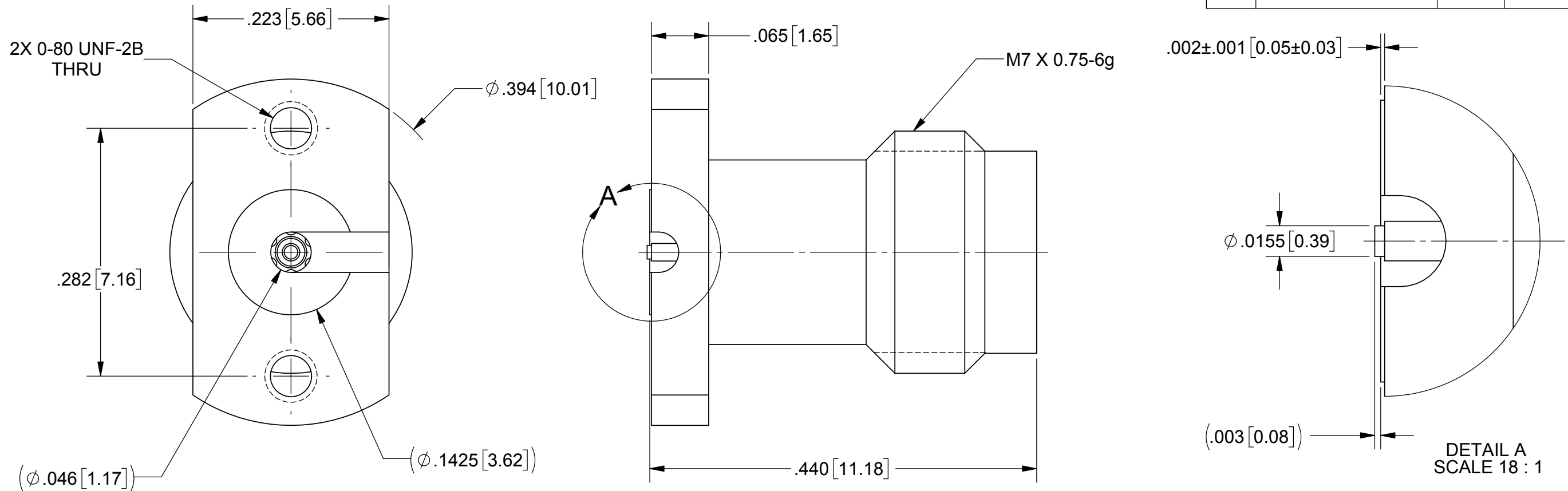


ROHS COMPLIANT

# PRODUCT DATA DRAWING

REVISION HISTORY			
REV	DESCRIPTION	DATE	APPROVED
-	DCN 47174	02/18	GPF
A	REV. DCN 47420	05/03/18	STW



**MATERIAL:**

BODY & INSERT: STAINLESS STEEL PER AMS 5640, ALLOY UNS S30300, TYPE 1  
OR ASTM A582, TYPE 303, CONDITION A.

CONTACT: BERYLLIUM COPPER PER ASTM B196, ALLOY No. UNS C17300, TD04.

INSULATOR: PEI (ULTEM 1000) PER ASTM D5205.

SCREWS: 300 SERIES STAINLESS STEEL.

FINISH:

BODY, INSERT  
& SCREWS: PASSIVATED PER AMS 2700.

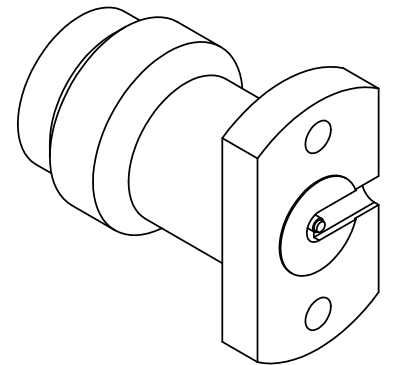
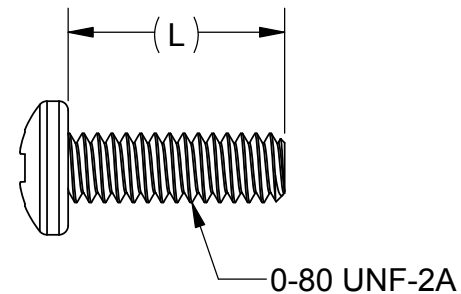
CONTACT: GOLD PER ASTM B488, TYPE II, CODE C, CLASS .76,  
OVER NICKEL PER AMS-QQ-N-290, CLASS 1, .00005" MIN.

## PERFORMANCE:

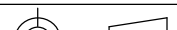
IMPEDANCE: 50 OHMS  
FREQ. RANGE: DC TO 67.0 GHz  
VSWR: 1.35:1 DC TO 67.0 GHz  
INSERTION LOSS: .05 X SQRT(F(F IN GHz))

NOTES:

1. FOR A FOOTPRINT RECOMMENDATION SPECIFIC TO YOUR PCB, PLEASE CONTACT US AT [applications@svmicro.com](mailto:applications@svmicro.com)



SV P/N	DESCRIPTION	PCB THICKNESS	(L)
SF3321-60024-1S	INCL. 2 EA (.188) SCREWS	.016 TO .123	.188
SF3321-60024-2S	INCL. 2 EA (.250) SCREWS	.078 TO .185	.250
SF3321-60024-3S	INCL. 2 EA (.438) SCREWS	.266 TO .373	.438
SF3321-60024	NO SCREWS	.005 TO .373	N/A

MATERIAL:	SEE NOTES	DIMENSIONS ARE IN INCHES TOLERANCES:		UNLESS OTHERWISE SPECIFIED		<b>SV Microwave, Inc.</b> 2400 Centrepark West Drive, Suite 100 West Palm Beach, FL 33409			
FINISH:	SEE NOTES	FRACTIONAL: $\pm 1/64$ ANGULAR: $X^\circ \pm 1^\circ 0'$ <span style="margin-left: 250px;"><math>X^\circ X' \pm 15'</math></span>		1) ALL DIMENSIONS ARE IN INCHES [MILLIMETERS] 2) ALL DIMENSIONS ARE AFTER PLATING. 3) BREAK CORNERS & EDGES: .005 R. MAX. 4) CHAM. 1ST & LAST THREADS. 5) SURFACE ROUGHNESS 63-MIL-STD-10. 6) DIA.'S ON COMMON CENTERS TO BE CONCENTRIC WITHIN .005 T.I.R. 7) REMOVE ALL BURRS		<b>TITLE:</b> 1.85MM JACK 2 HOLE FLANGE COMPRESSION MOUNT (67 GHz) FOR CPW/MICROSTRIP			
SURFACE AREA:	N/A	DECIMAL: $.X \pm .030$ <span style="margin-left: 100px;"><math>.XX \pm .010</math></span> <span style="margin-left: 100px;"><math>.XXX \pm .005</math></span>							
<b>PROPRIETARY</b>  THE INFORMATION CONTAINED IN THIS DRAWING IS THE SOLE PROPERTY OF SV MICROWAVE, INC. ANY REPRODUCTION IN PART OR AS A WHOLE WITHOUT THE WRITTEN PERMISSION OF SV MICROWAVE, INC IS PROHIBITED.		INTERPRET DIMENSIONS AND TOLERANCES PER ASME Y14.5M - 1994				<b>SIZE</b> <b>CAGE CODE</b> <b>DWG. NO.</b> <b>B</b> <b>95077</b> <b>SF3321-60024-XS</b>			
		THIRD ANGLE PROJECTION		DRAWN:                      JMC 03/10/16  CHECKED:                  STW 03/11/16  APPROVED:                STW 03/11/16					
						SCALE: 8:1		SHEET 1 OF 1	

# Mouser Electronics

Authorized Distributor

Click to View Pricing, Inventory, Delivery & Lifecycle Information:

[Amphenol:](#)

[SF3321-60024-2S](#)