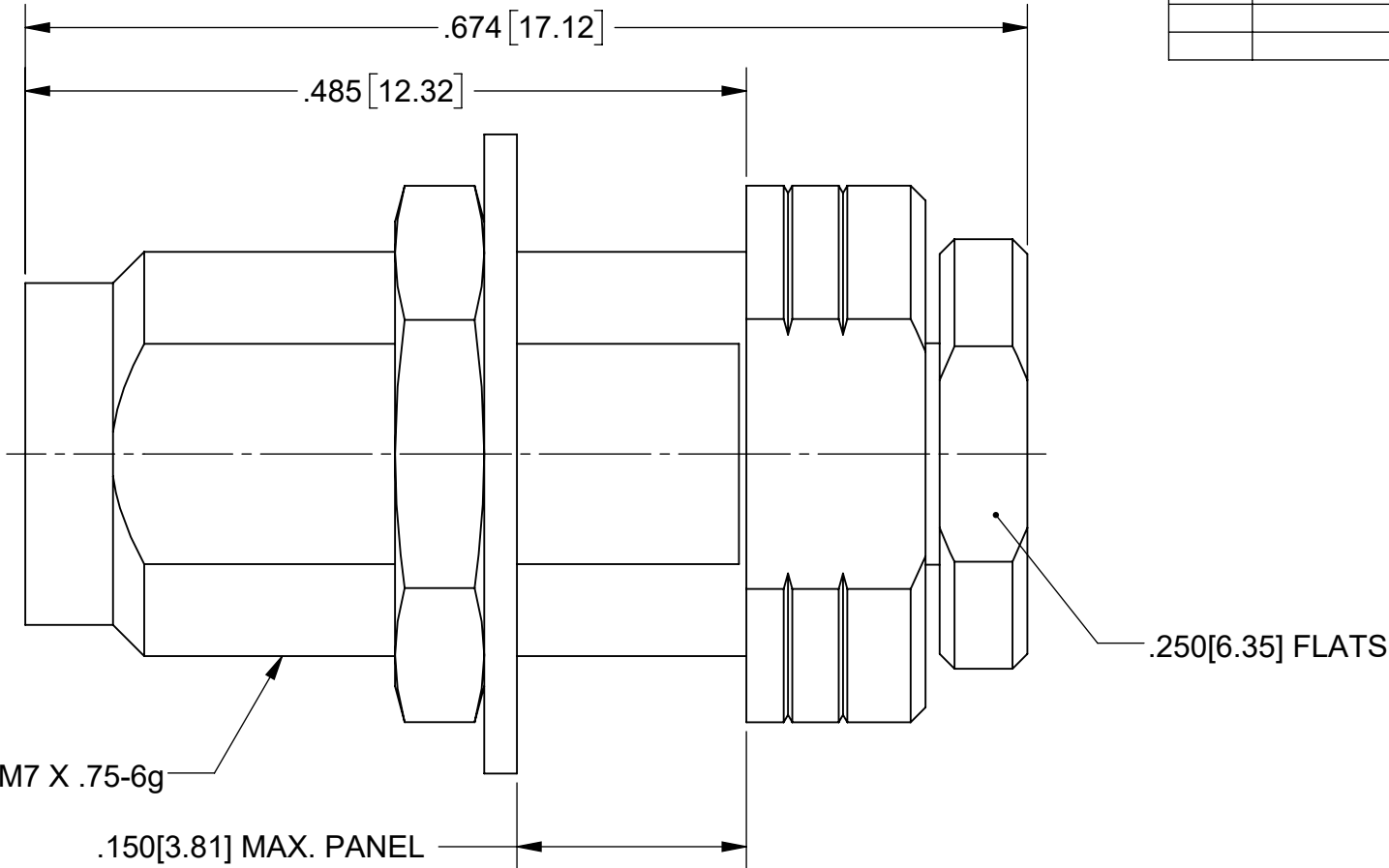
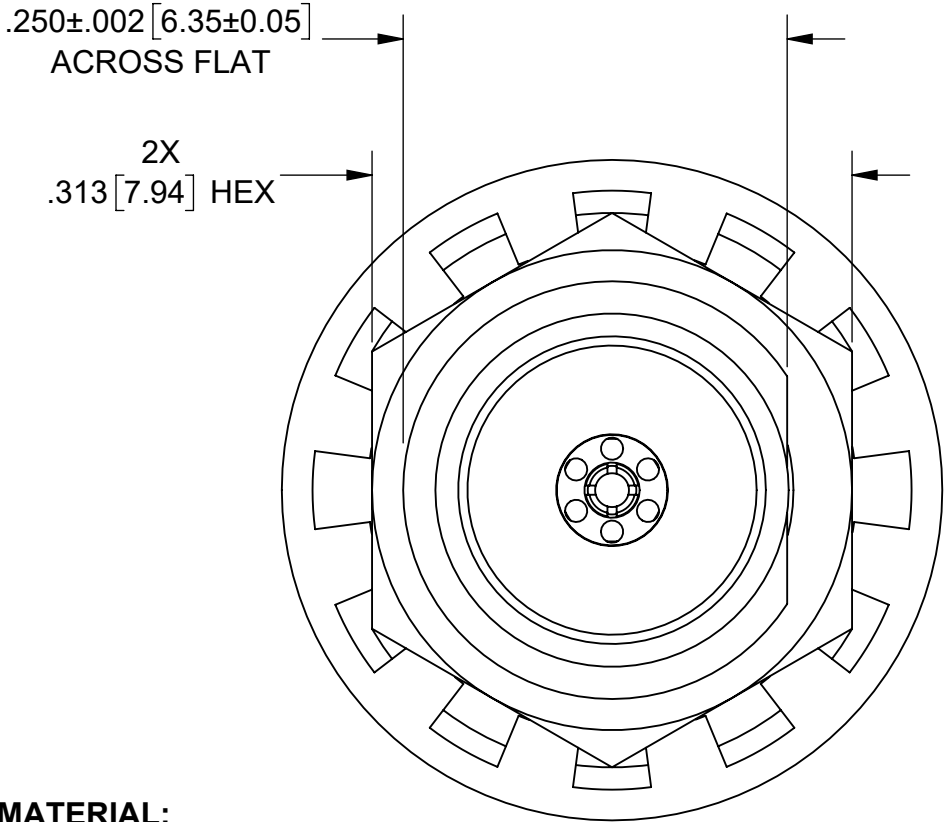


PRODUCT DATA DRAWING

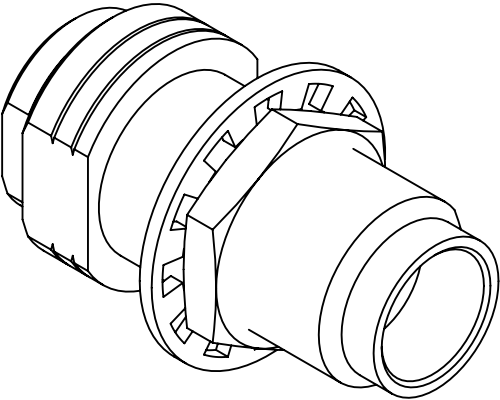
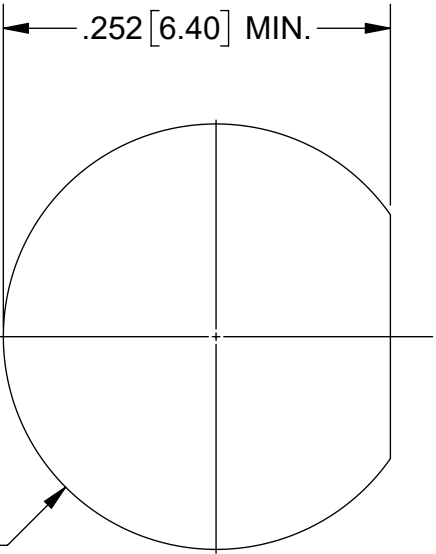
REVISION HISTORY			
REV	DESCRIPTION	DATE	APPROVED
-	NRN 46181	08/21	BNK



MATERIAL:	
BODY, CLAMP NUT, HEX NUT & INSERT:	STAINLESS STEEL PER AMS-5640, ALLOY UNS S30300, TYPE 1 OR ASTM A582, TYPE 303
LOCKWASHER:	STAINLESS STEEL 400 SERIES
FERRULE & CONTACT:	BERYLLIUM COPPER PER ASTM B196, ALLOY No. UNS C17300, TD04
INSULATOR:	POLYETHERIMIDE (ULTEM) PER ASTM D5205
FINISH:	
BODY, CLAMP NUT, LOCKWASHER, HEX NUT & INSERT:	PASSIVATED PER AMS-2700.
CONTACT:	GOLD PER ASTM B488, TYPE II, CODE C, CLASS 1.27, OVER NICKEL PER AMS-QQ-N-290, CLASS 1, .00005" MIN.
FERRULE:	GOLD PER ASTM B488, TYPE II, CODE C, CLASS 1.52, OVER NICKEL PER AMS-QQ-N-290, CLASS 1, .00010" MIN.

PERFORMANCE:

IMPEDANCE:	50 OHMS
FREQ. RANGE:	DC TO 65.0 GHz
VSWR:	1.33:1 DC TO 65.0 GHz
INSERTION LOSS:	.03 X SQRT(F(F IN GHz))
DWV:	500 VRMS
OPERATING TEMP.:	-55 °C TO +125 °C
ENGAGEMENT/ DISENGAGEMENT:	2 IN-LBS



RECOMMENDED MOUNTING HOLE

MATERIAL:	SEE NOTES	DIMENSIONS ARE IN INCHES TOLERANCES: FRACTIONAL: ±1/64 ANGULAR: X° ±1°0'
-----------	-----------	---

Mouser Electronics

Authorized Distributor

Click to View Pricing, Inventory, Delivery & Lifecycle Information:

[Amphenol:](#)

[SF3321-60007](#)