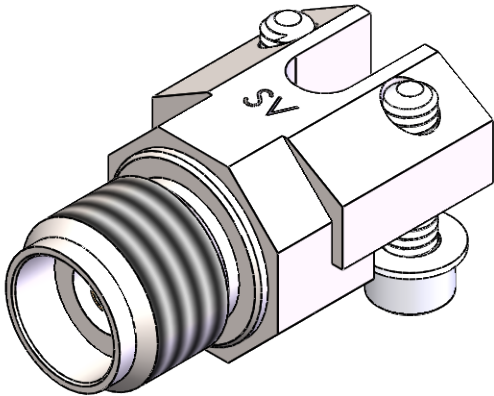
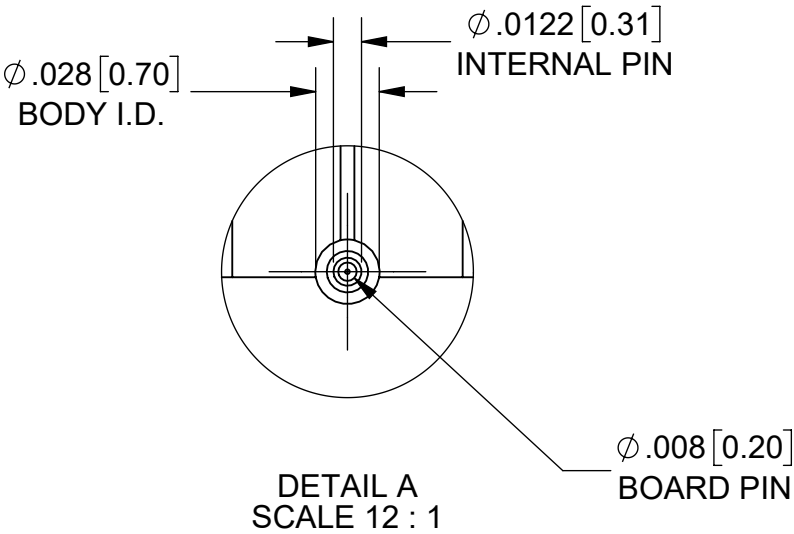
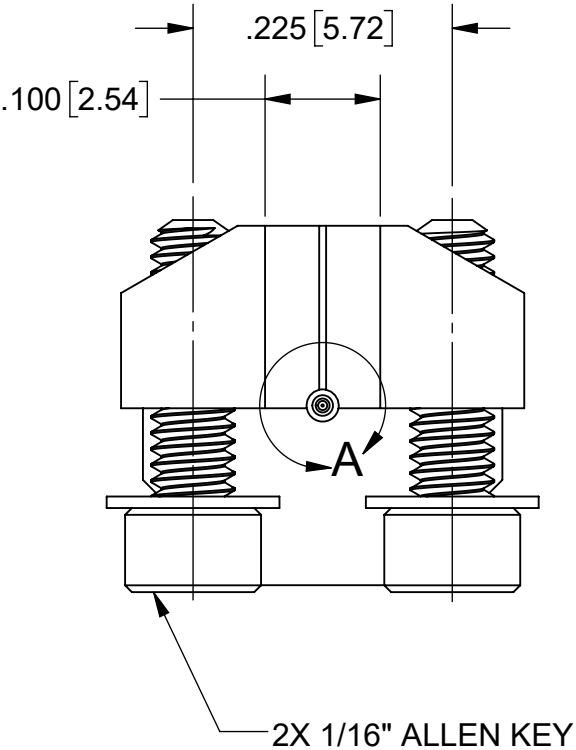
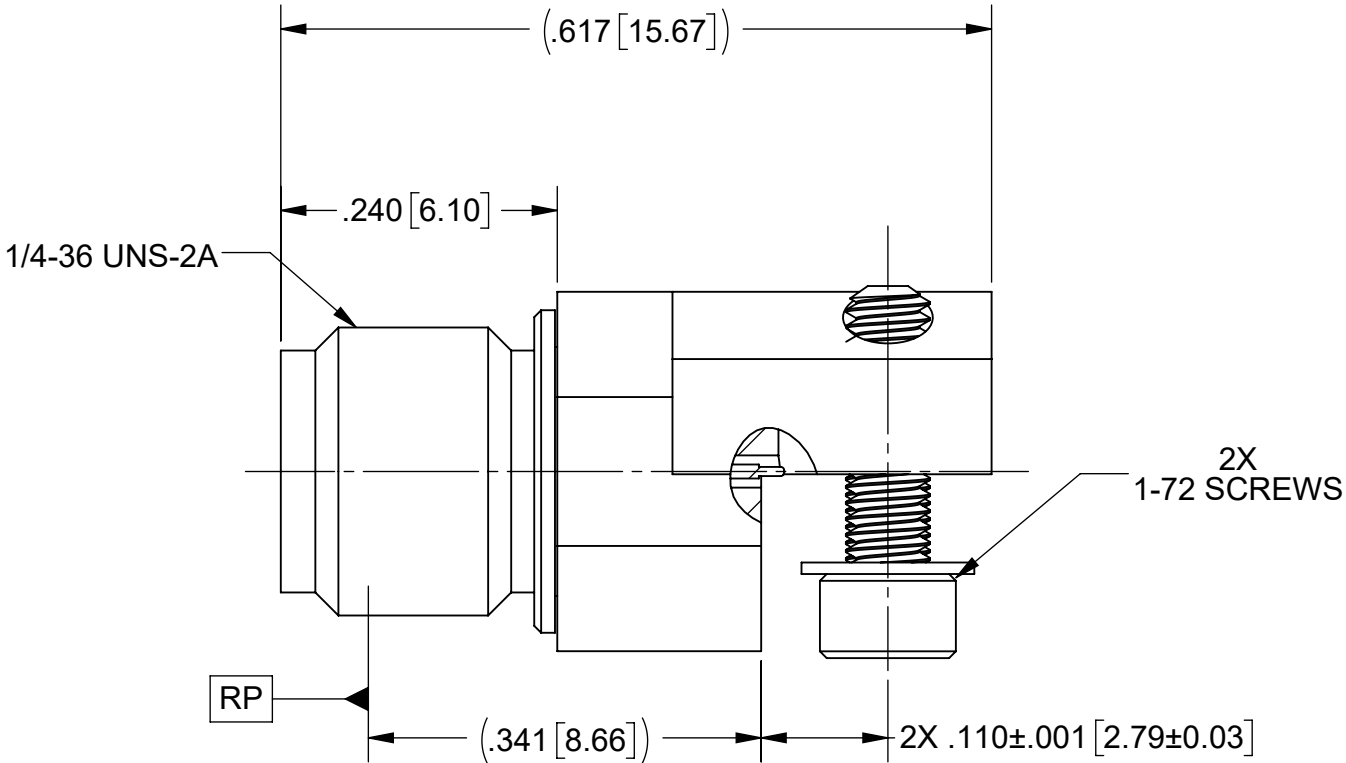
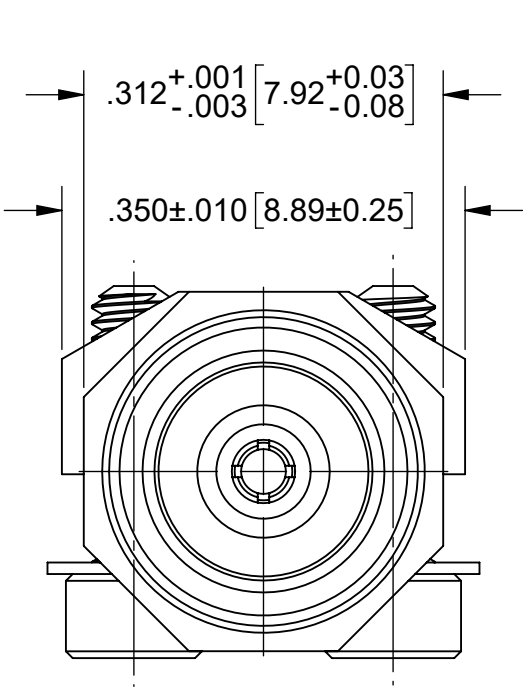


PRODUCT DATA DRAWING

REVISION HISTORY			
REV	DESCRIPTION	DATE	APPROVED
-	NRN 44031	06/19	STW



MATERIAL:

- BODY:

CONTACT:

BEAD:

FINISH:

BODY:
- STAINLESS STEEL PER AMS-5640,
ALLOY UNS S30300, TYPE 1;
OR ASTM A582 TYPE 303, COND. A

BERYLLIUM COPPER PER ASTM B196,
ALLOY No. UNS C17300, TD04

ULTEM 1000 PER ASTM D5205

PASSIVATED PER AMS-2700

- CONTACT:
- GOLD PER ASTM B488, TYPE II,
CODE C, CLASS 1.27, OVER NICKEL
PER AMS 2404, .00005" MIN.

PERFORMANCE:

- IMPEDANCE:


FREQ. RANGE:

VSWR:
- 50 OHMS

DC TO 40.0 GHz

1.25:1 MAX. DC TO 40.0 GHz

- NOTES:
1. FOR A FOOTPRINT RECOMMENDATION SPECIFIC TO YOUR PCB, PLEASE
CONTACT US AT applications@svmicro.com

MATERIAL:	SEE NOTES	DIMENSIONS ARE IN INCHES TOLERANCES: FRACTIONAL: $\pm 1/64$ ANGULAR: X° $\pm 1^{\circ}0'$ X°X' $\pm 15'$ DECIMAL: .X $\pm .030$.XX $\pm .010$.XXX $\pm .005$ INTERPRET DIMENSIONS AND TOLERANCES PER ASME Y14.5M - 1994	UNLESS OTHERWISE SPECIFIED 1) ALL DIMENSIONS ARE IN INCHES (MILLIMETERS) 2) ALL DIMENSIONS ARE AFTER PLATING. 3) BREAK CORNERS & EDGES .005 R. MAX. 4) CHAM. 1ST & LAST THREADS. 5) SURFACE ROUGHNESS 63-MIL-STD-10. 6) DIA.'S ON COMMON CENTERS TO BE CONCENTRIC WITHIN .005 T.I.R. 7) REMOVE ALL BURRS	<div> 2400 Centrepark West Drive, Suite 100 West Palm Beach, FL 33409</div> <div>TITLE: 2.92mm FEMALE EDGE LAUNCH CONNECTOR WITH Ø.008 LAUNCH PIN</div>
FINISH:	SEE NOTES			
SURFACE AREA:	N/A			
THE INFORMATION CONTAINED IN THIS DRAWING IS THE SOLE PROPERTY OF SV MICROWAVE, INC. ANY REPRODUCTION IN PART OR AS A WHOLE WITHOUT THE WRITTEN PERMISSION OF SV MICROWAVE, INC IS PROHIBITED.		THIRD ANGLE PROJECTION	DRAWN: JDC 06/19/19	SIZE: B CAGE CODE: 95077 DWG. NO. SF1521-60150
			CHECKED: STW 06/19/19	
			APPROVED: STW 06/19/19	
			SCALE: 6:1	SHEET 1 OF 1

Mouser Electronics

Authorized Distributor

Click to View Pricing, Inventory, Delivery & Lifecycle Information:

[Amphenol:](#)

[SF1521-60150](#)