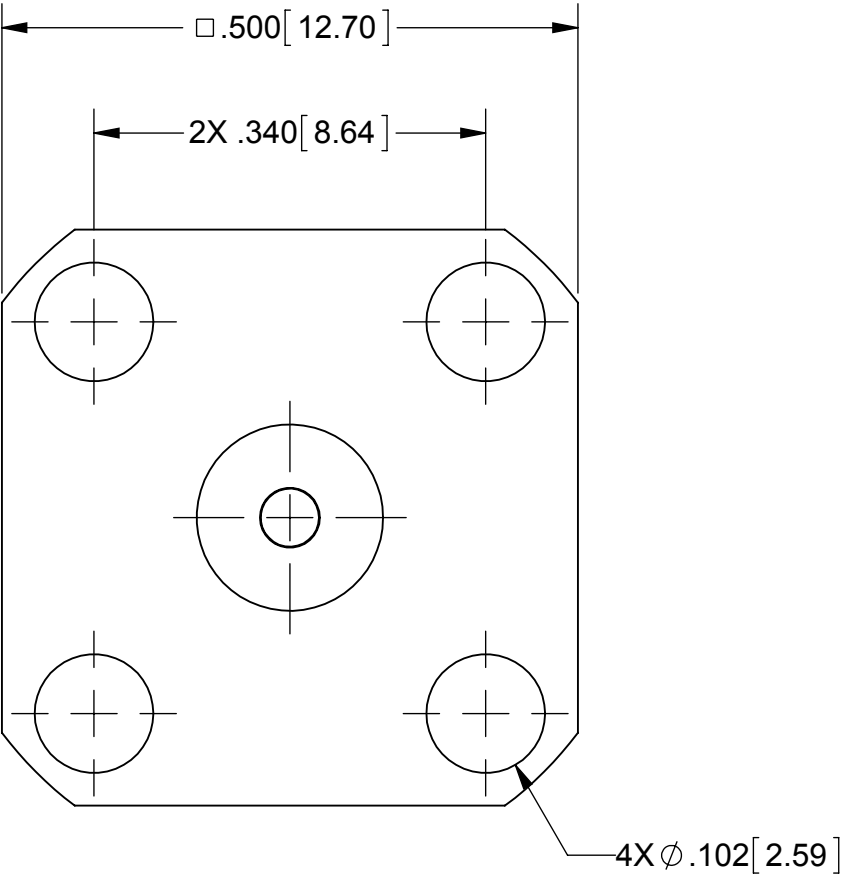
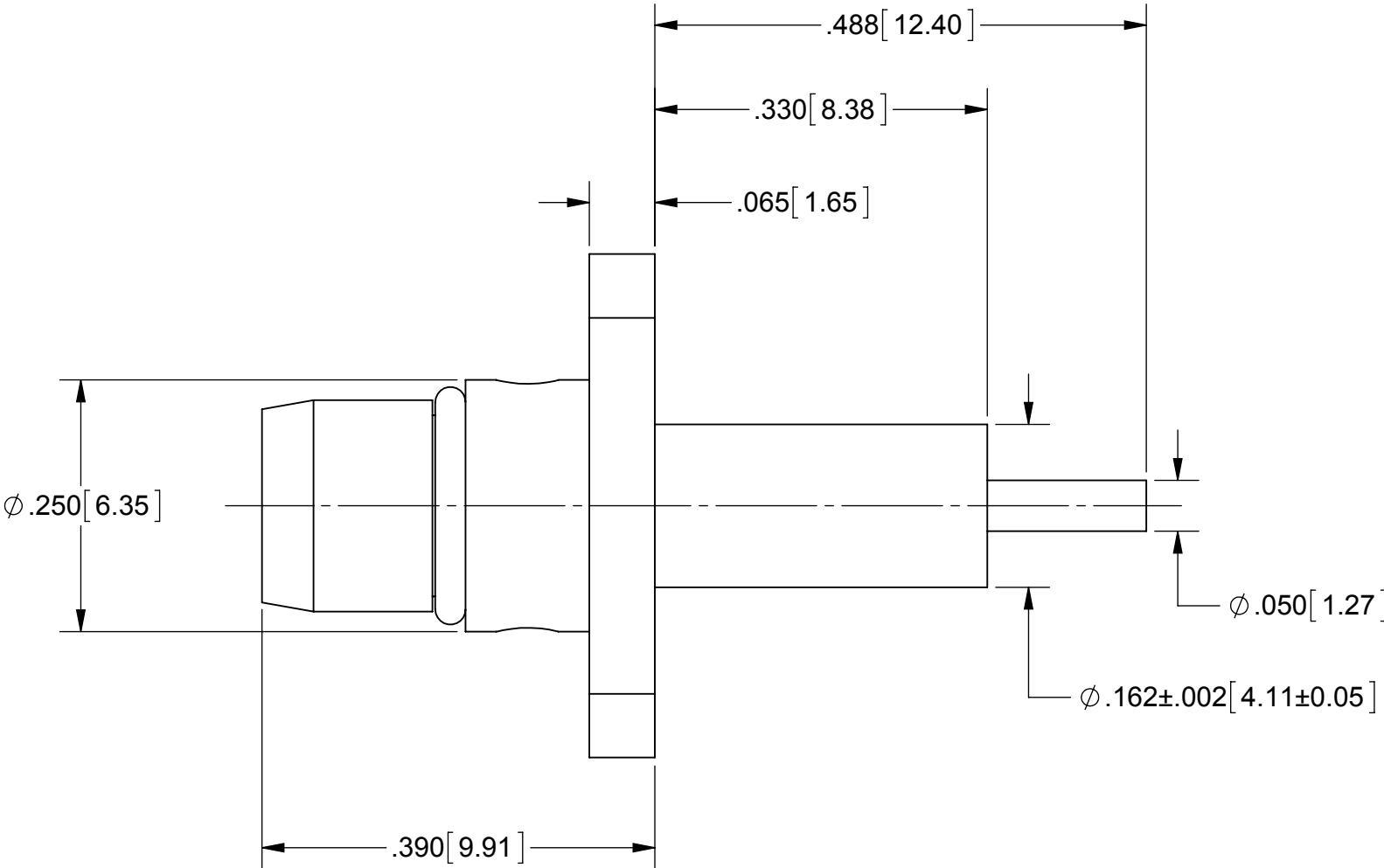


ROHS COMPLIANT

# PRODUCT DATA DRAWING

REVISION HISTORY			
REV	DESCRIPTION	DATE	APPROVED
A	DCN 41836	11/15	STW



### MATERIAL:

BODY: STAINLESS STEEL PER AMS-5640,  
ALLOY UNS S30300, TYPE 1

CONTACT: BERYLLIUM COPPER PER ASTM B196,  
ALLOY No. UNS C17300, TD04

INSULATOR: PTFE PER ASTM D1710, TYPE I, GRADE 1, CLASS B

O-RING: FLUOROCARBON RUBBER PER AMS 7276


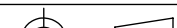
## FINISH:

BODY: PASSIVATED PER AMS-2700

CONTACT: GOLD PER ASTM B488, TYPE II,  
CODE C, CLASS .76, OVER NICKEL  
PER AMS-QQ-N-290, CLASS 1, .00005" MIN.

## PERFORMANCE:

IMPEDANCE: 50 OHMS  
FREQ. RANGE: DC TO 22.0 GHz

MATERIAL:	SEE NOTES	DIMENSIONS ARE IN INCHES TOLERANCES:		UNLESS OTHERWISE SPECIFIED		 2400 Centrepark West Drive, Suite 100 West Palm Beach, FL 33409	
FINISH:	SEE NOTES	FRACTIONAL: $\pm 1/64$ ANGULAR: $X^{\circ} \pm 1^{\circ} 0'$ $X^{\circ} X' \pm 15'$		1) ALL DIMENSIONS ARE IN INCHES (MILLIMETERS) 2) ALL DIMENSIONS ARE AFTER PLATING. 3) BREAK CORNERS & EDGES .005 R. MAX. 4) CHAM. 1ST & LAST THREADS. 5) SURFACE ROUGHNESS 63-MIL-STD-10. 6) DIA.'S ON COMMON CENTERS TO BE CONCENTRIC WITHIN .005 T.I.R. 7) REMOVE ALL BURRS		TITLE:	
SURFACE AREA:	N/A	DECIMAL: .X $\pm .030$ .XX $\pm .010$ .XXX $\pm .005$				BMA PLUG FLANGE MOUNT	
PROPRIETARY		INTERPRET DIMENSIONS AND TOLERANCES PER ASME Y14.5M - 1994					
THE INFORMATION CONTAINED IN THIS DRAWING IS THE SOLE PROPERTY OF SV MICROWAVE, INC. ANY REPRODUCTION IN PART OR AS A WHOLE WITHOUT THE WRITTEN PERMISSION OF SV MICROWAVE, INC IS PROHIBITED.		THIRD ANGLE PROJECTION		DRAWN: VMJ 02/15/00		SIZE	
				CHECKED: SW 02/17/00		CAGE CODE	
				APPROVED: STW 02/17/00		DWG. NO.	
						SF1755-6104	
						SCALE: 6:1	
						SHEET 1 OF 1	

# Mouser Electronics

Authorized Distributor

Click to View Pricing, Inventory, Delivery & Lifecycle Information:

[Amphenol:](#)

[SF1755-6104](#)