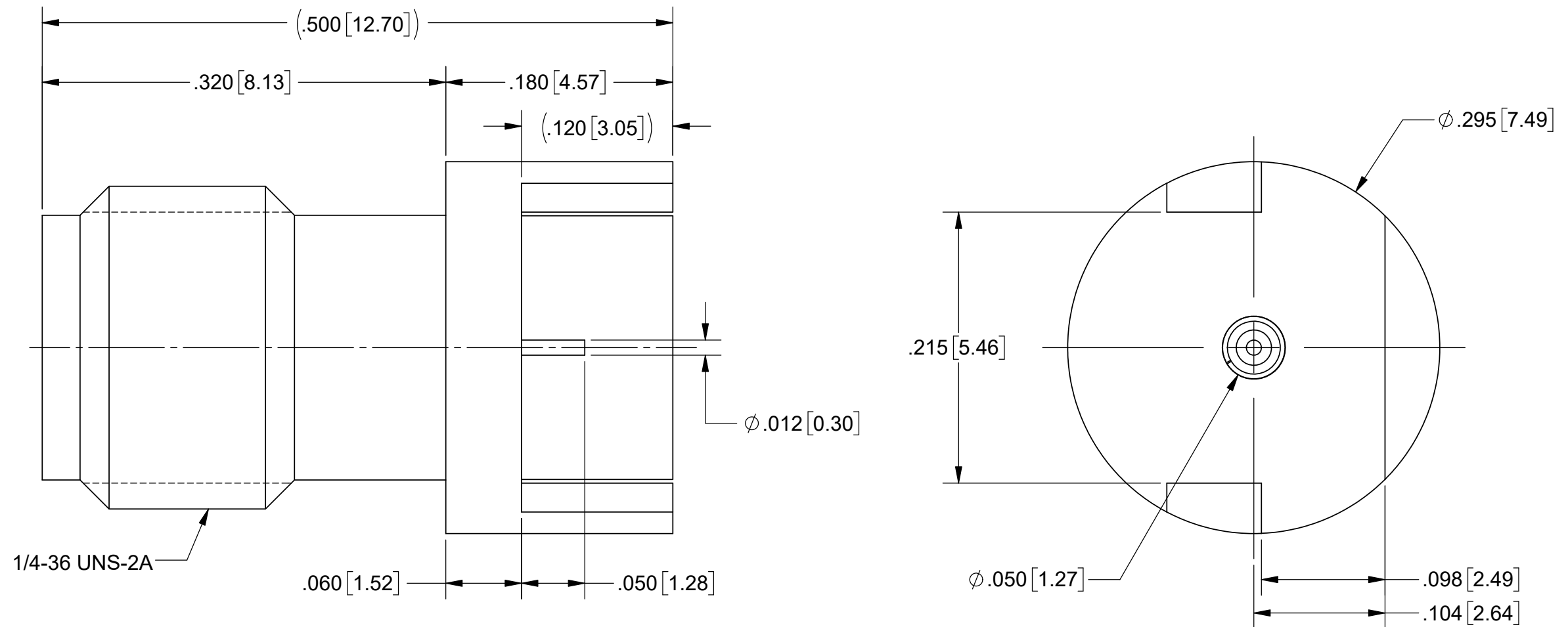


ROHS COMPLIANT

REVISION HISTORY			
REV	DESCRIPTION	DATE	APPROVED
-	DCN 47061	12/17	GPF
A	DCN 47452	05/18	STW

# PRODUCT DATA DRAWING



**MATERIAL:**

BODY &  
INSERT: STAINLESS STEEL PER AMS-5640,  
ALLOY UNS S30300, TYPE 1;  
OR ASTM A582 TYPE 303, COND. A

CONTACT: BERYLLIUM COPPER PER ASTM B196,  
ALLOY No. UNS C17300, TD04

DIELECTRIC BEAD: ULTEM 1000

## FINISH:


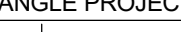
BODY,  
INSERT &  
CONTACT: GOLD PER ASTM B488, TYPE II,  
CODE C, CLASS 0.76, OVER NICKEL  
PER AMS-QQ-N-290, CLASS 1, .00005" MIN.

### PERFORMANCE:

FREQ. RANGE: DC TO 40.0 GHz.

NOTES:

1. FOR A FOOTPRINT RECOMMENDATION SPECIFIC TO YOUR PCB, PLEASE CONTACT US AT [applications@svmicro.com](mailto:applications@svmicro.com)

MATERIAL:	SEE NOTES	DIMENSIONS ARE IN INCHES TOLERANCES: FRACTIONAL: ±1/64    ANGULAR: X°    ±1°0' X°X'    ±15'		UNLESS OTHERWISE SPECIFIED  1) ALL DIMENSIONS ARE IN INCHES (MILLIMETERS) 2) ALL DIMENSIONS ARE AFTER PLATING. 3) BREAK CORNERS & EDGES .005 R. MAX. 4) CHAM. 1ST & LAST THREADS. 5) SURFACE ROUGHNESS 63-MIL-STD-10. 6) DIA.'S ON COMMON CENTERS TO BE CONCENTRIC WITHIN .005 T.I.R. 7) REMOVE ALL BURRS		<div> 2400 Centrepark West Drive, Suite 100 West Palm Beach, FL 33409</div>		
FINISH:	SEE NOTES	DECIMAL: .X    ±.030 .XX    ±.010 .XXX    ±.005				TITLE:		
SURFACE AREA:	N/A	INTERPRET DIMENSIONS AND TOLERANCES PER ASME Y14.5M - 1994				2.92mm JACK PCB MOUNT Ø.012 PIN FOR .093" PCB		
PROPRIETARY  THE INFORMATION CONTAINED IN THIS DRAWING IS THE SOLE PROPERTY OF SV MICROWAVE, INC. ANY REPRODUCTION IN PART OR AS A WHOLE WITHOUT THE WRITTEN PERMISSION OF SV MICROWAVE, INC IS PROHIBITED.		THIRD ANGLE PROJECTION  		DRAWN: VB 12/15/17		SIZE	CAGE CODE	DWG. NO.
				CHECKED: GPF 12/15/17		B	95077	1521-60125
				APPROVED: GPF 12/15/17		SCALE: 10:1		SHEET 1 OF 1

# Mouser Electronics

Authorized Distributor

Click to View Pricing, Inventory, Delivery & Lifecycle Information:

[Amphenol:](#)

[1521-60125](#)