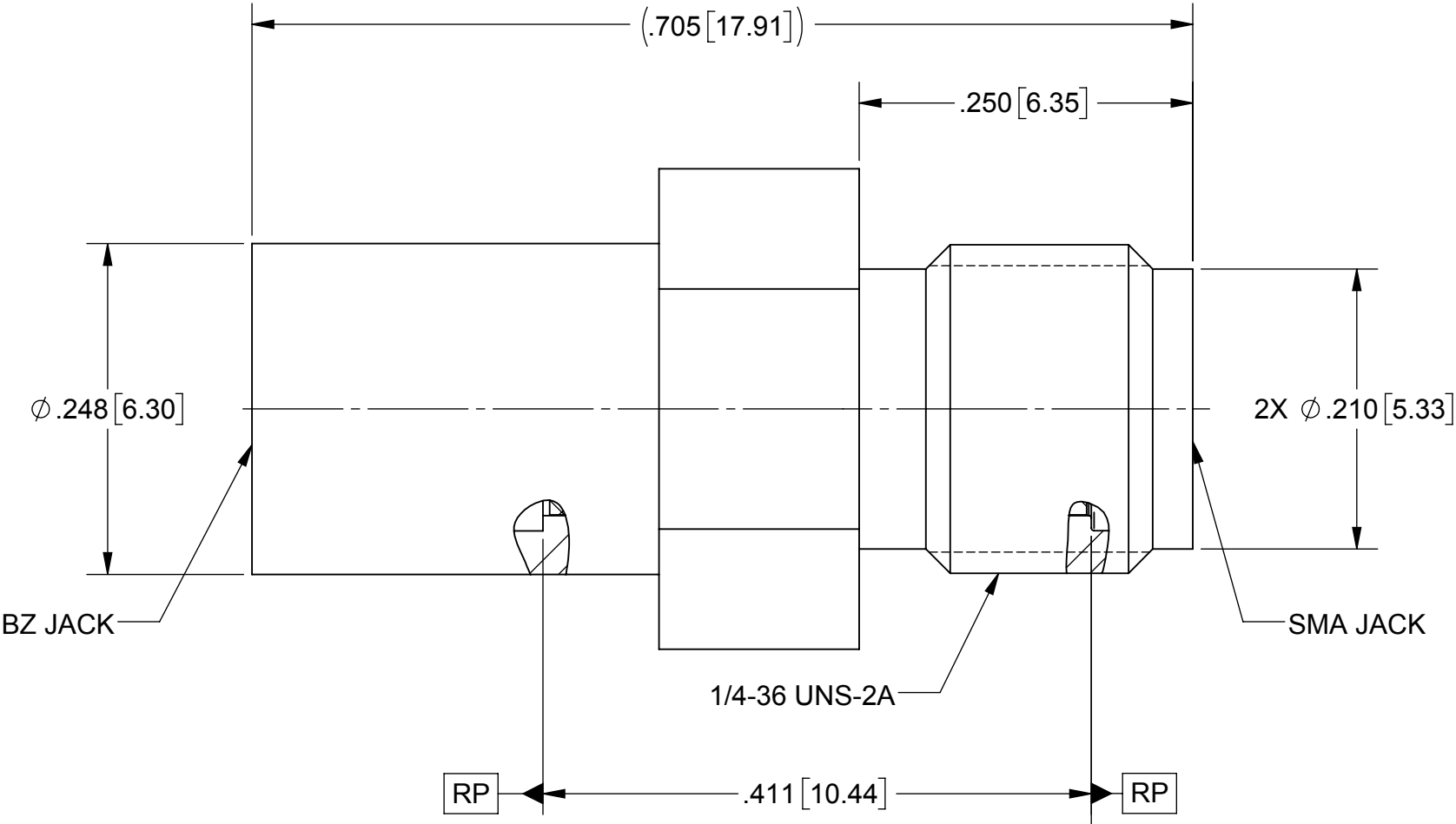
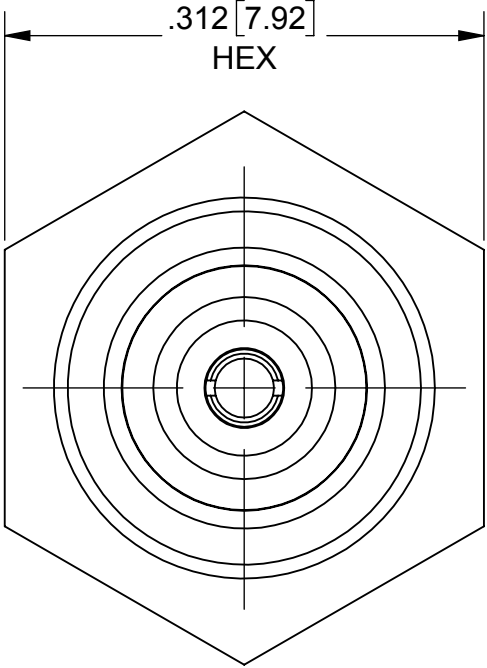


ROHS COMPLIANT

PRODUCT DATA DRAWING

| REVISION HISTORY | | | |
|------------------|-------------|-------|----------|
| REV | DESCRIPTION | DATE | APPROVED |
| A | DCN 43237 | 03/17 | MAL |
| | | | |
| | | | |



MATERIAL:

BODY: STAINLESS STEEL PER AMS-5640,
ALLOY UNS S30300, TYPE 1

CONTACT: BERYLLIUM COPPER PER ASTM B196,
ALLOY No. UNS C17300, TD04

INSULATOR: PTFE PER ASTM D1710, TYPE I, GRADE 1, CLASS B


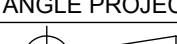
FINISH:

BODY: PASSIVATED PER AMS-2700

CONTACT: GOLD PER ASTM B488, TYPE II,
CODE C, CLASS 1.27, OVER NICKEL
PER AMS-QQ-N-290, CLASS 1, .00005" MIN.

PERFORMANCE:

IMPEDANCE: 50 OHMS
FREQ. RANGE: DC TO 2.0 GHz.

| | | | | | | | | |
|--|-----------|---|--|--|--|--|-----------|--------------|
| MATERIAL: | SEE NOTES | DIMENSIONS ARE IN INCHES TOLERANCES: | | UNLESS OTHERWISE SPECIFIED | | <div><div>2400 Centrepark West Drive, Suite 100 West Palm Beach, FL 33409</div></div> | | |
| FINISH: | SEE NOTES | FRACTIONAL: $\pm 1/64$ ANGULAR: $X^\circ \pm 1^\circ 0'$ $X^\circ X' \pm 15'$ DECIMAL: $.X \pm .030$ $.XX \pm .010$ $.XXX \pm .005$ | | 1) ALL DIMENSIONS ARE IN INCHES (MILLIMETERS) 2) ALL DIMENSIONS ARE AFTER PLATING. 3) BREAK CORNERS & EDGES .005 R. MAX. 4) CHAM. 1ST & LAST THREADS. 5) SURFACE ROUGHNESS 63 MIL-STD-10. 6) DIA. 'S ON COMMON CENTERS TO BE CONCENTRIC WITHIN .005 T.I.R. 7) REMOVE ALL BURRS | | TITLE: | | |
| SURFACE AREA: | N/A | INTERPRET DIMENSIONS AND TOLERANCES PER ASME Y14.5M - 1994 | | | | BZ JACK TO SMA JACK ADAPTER | | |
| PROPRIETARY | | THIRD ANGLE PROJECTION | | DRAWN: VB 03/23/17 | | SIZE | CAGE CODE | DWG. NO. |
| THE INFORMATION CONTAINED IN THIS DRAWING IS THE SOLE PROPERTY OF SV MICROWAVE, INC. ANY REPRODUCTION IN PART OR AS A WHOLE WITHOUT THE WRITTEN PERMISSION OF SV MICROWAVE, INC IS PROHIBITED. | |  | | CHECKED: MAL 03/23/17 | | B | 95077 | SF1122-6108 |
| | | | | APPROVED: MAL 03/23/17 | | | | |
| | | | | | | SCALE: 4:1 | | SHEET 1 OF 1 |

Mouser Electronics

Authorized Distributor

Click to View Pricing, Inventory, Delivery & Lifecycle Information:

[Amphenol:](#)

[SF1122-6108](#)