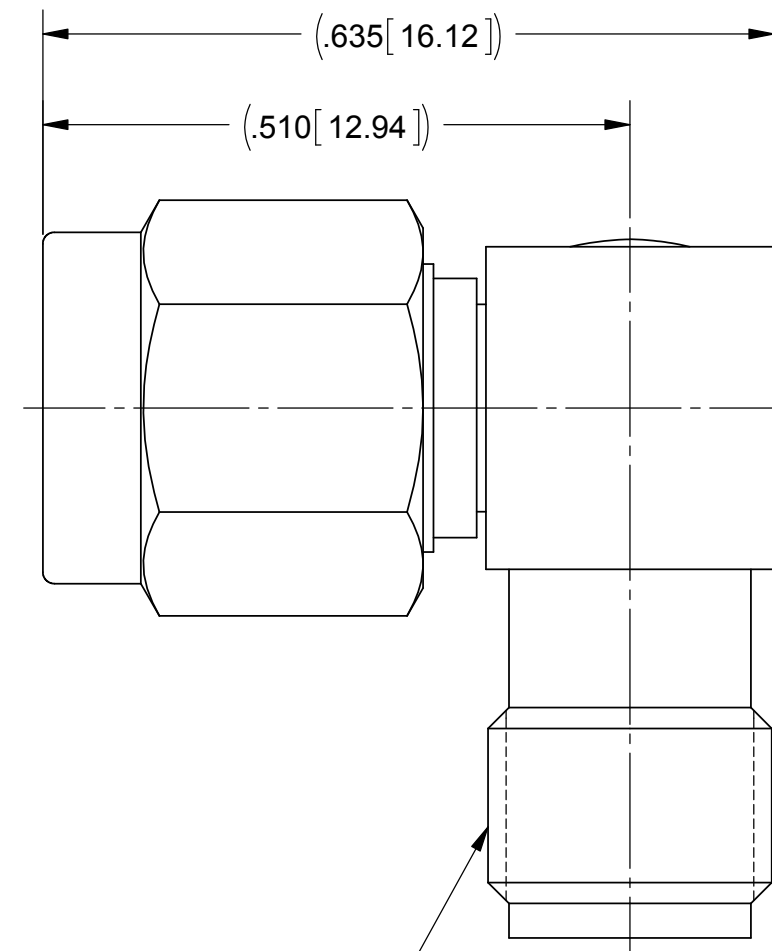
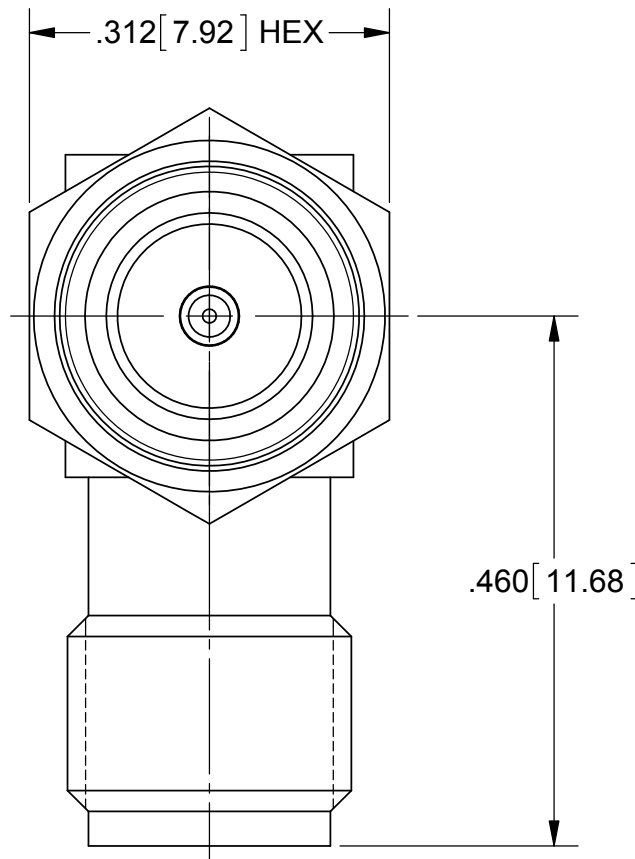


# PRODUCT DATA DRAWING

REVISION HISTORY			
REV	DESCRIPTION	DATE	APPROVED
D	DCN 41797	10/15	DAL



1/4-36 UNS-2A

**MATERIAL:**

## BODIES & COUPLING NUT:

STAINLESS STEEL PER AMS-5640,  
ALLOY UNS S30300, TYPE 1

CAP:

STAINLESS STEEL PER AMS A-240,  
ALLOY UNS S30400

LOCK RING &  
CONTACT (FEMALE):

BERYLLIUM COPPER PER ASTM B196,  
ALLOY No. UNS C17300, TD04

CONTACT (MALE):

BRASS PER ASTM B16, ALLOY UNS No. C36000

INSULATORS:

PTFE PER ASTM D1710, TYPE I, GRADE 1, CLASS

GASKET:

SILICONE RUBBER PER A-A-59588,  
CLASS 2B, GRADE 50/60

## FINISH:

**BODIES, CAP &  
COUPLING NUT:**


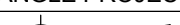
GOLD PER ASTM B488, TYPE I,  
CODE C, CLASS .50, OVER NICKEL  
PER AMS-QQ-N-290, CLASS 1, .00005" MIN.

CONTACTS:

GOLD PER ASTM B488, TYPE II,  
CODE C, CLASS .76, OVER NICKEL  
PER AMS-QQ-N-290, CLASS 1, .00005" MIN.

## PERFORMANCE:

IMPEDANCE: 50 OHMS  
FREQ. RANGE: DC TO 12.4 GHz

MATERIAL:	SEE NOTES	DIMENSIONS ARE IN INCHES TOLERANCES:		UNLESS OTHERWISE SPECIFIED		<div> 2400 Centrepark West Drive, Suite 100 West Palm Beach, FL 33409</div>				
FINISH:	SEE NOTES	FRACTIONAL: $\pm 1/64$ ANGULAR: $X^{\circ} \pm 1^{\circ} 0'$ $X^{\circ} X' \pm 15'$		1) ALL DIMENSIONS ARE IN INCHES (MILLIMETERS) 2) ALL DIMENSIONS ARE AFTER PLATING 3) BREAK CORNERS & EDGES .005 R. MAX. 4) CHAM. 1ST & LAST THREADS. 5) SURFACE ROUGHNESS 63-MIL-STD-10. 6) DIA.'S ON COMMON CENTERS TO BE CONCENTRIC WITHIN .005 T.I.R. 7) REMOVE ALL BURRS		TITLE:  SMA JACK TO SMA PLUG R/A ADAPTER				
SURFACE AREA:	N/A	DECIMAL: $X \pm .030$ $.XX \pm .010$ $.XXX \pm .005$								
PROPRIETARY  THE INFORMATION CONTAINED IN THIS DRAWING IS THE SOLE PROPERTY OF SV MICROWAVE, INC. ANY REPRODUCTION IN PART OR AS A WHOLE WITHOUT THE WRITTEN PERMISSION OF SV MICROWAVE, INC IS PROHIBITED.	INTERPRET DIMENSIONS AND TOLERANCES PER ASME Y14.5M - 1994		THIRD ANGLE PROJECTION		DRAWN:		BNK 10/29/15			
					CHECKED:		DAL 10/29/15			
					APPROVED:		DGG 11/02/76			
						SIZE	CAGE CODE	DWG. NO.		
						B	95077	2994-6001		
						SCALE: 6:1				SHEET 1 OF

# Mouser Electronics

Authorized Distributor

Click to View Pricing, Inventory, Delivery & Lifecycle Information:

[Amphenol:](#)

[2994-6001](#)