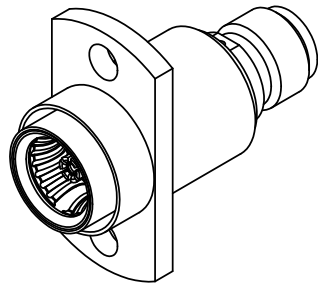


PRODUCT DATA DRAWING

REVISION HISTORY			
REV	DESCRIPTION	DATE	APPROVED
A	DCN 41727	10/15	DAL
B	DCN 48428	02/19	STW



MATERIAL:

BODIES & BUSHING:	STAINLESS STEEL PER AMS-5640, ALLOY UNS S30300, TYPE 1
CONTACT SLEEVE & CONTACT:	BERYLLIUM COPPER PER ASTM B196, ALLOY No. UNS C17300, TD04
SHIM SPRING & OUTER CONTACT:	BERYLLIUM COPPER PER ASTM B194, ALLOY No. UNS C17200, TD04
INSULATOR:	PTFE PER ASTM D1710, TYPE I, GRADE 1, CLASS B
E-RING:	STAINLESS STEEL TYPE PH 15-7 OR 17-7
COMPRESSION SPRING:	302 STAINLESS STEEL

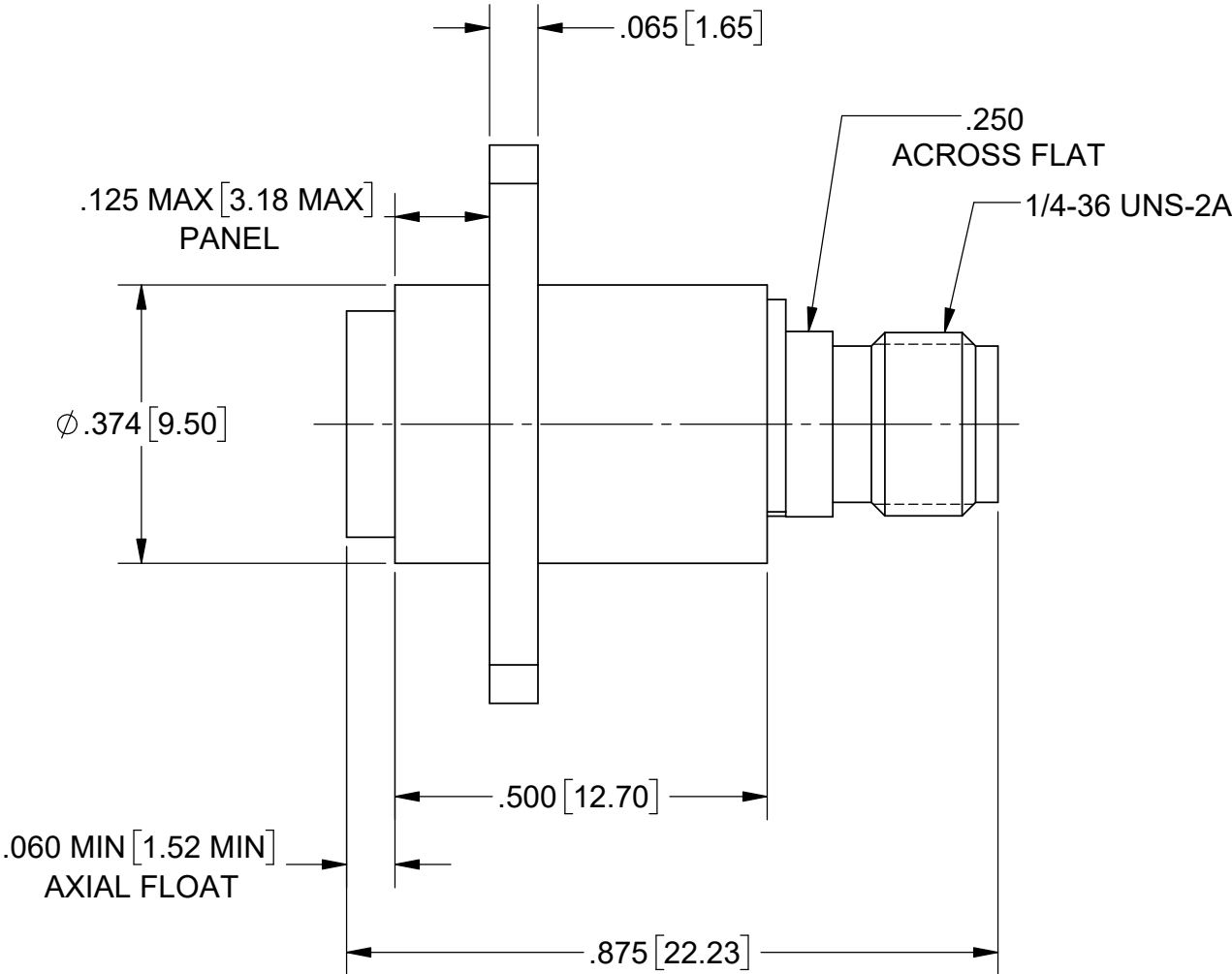
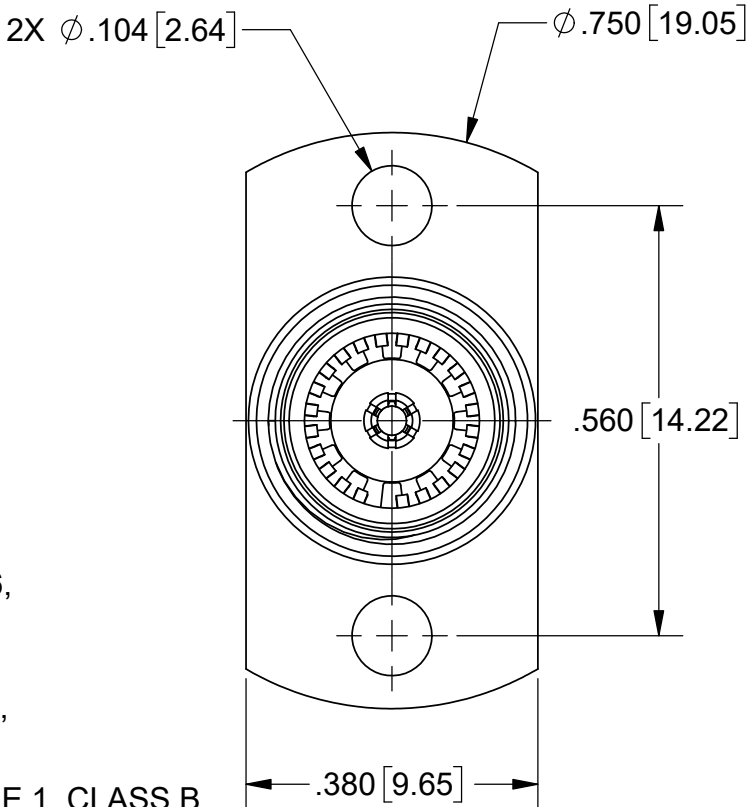
FINISH:


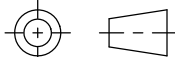
BODY, BUSHING, COMPRESSION SPRING, E-RING, & OUTER BODY:	PASSIVATED PER AMS-2700
--	-------------------------

CONTACT, CONTACT SLEEVE, SHIM SPRING & OUTER CONTACT:	GOLD PER ASTM B 488, TYPE II, CODE C, CLASS .76, OVER NICKEL PER AMS-QQ-N-290, CLASS 1, .00010" MIN.
---	--

PERFORMANCE:

IMPEDANCE:	50 OHMS
FREQ. RANGE:	DC TO 22.0 GHz



MATERIAL:	SEE NOTES	DIMENSIONS ARE IN INCHES TOLERANCES:  FRACTIONAL: ±1/64    ANGULAR: X°    ±1°0'    X°X' ±15'  DECIMAL: .X    ±.030 .XX    ±.010 .XXX ±.005  INTERPRET DIMENSIONS AND TOLERANCES PER ASME Y14.5M - 1994	UNLESS OTHERWISE SPECIFIED  1) ALL DIMENSIONS ARE IN INCHES (MILLIMETERS) 2) ALL DIMENSIONS ARE AFTER PLATING. 3) BREAK CORNERS & EDGES .005 R. MAX. 4) CHAM. 1ST & LAST THREADS. 5) SURFACE ROUGHNESS 63-MIL-STD-10. 6) DIA.'S ON COMMON CENTERS TO BE CONCENTRIC WITHIN .005 T.I.R. 7) REMOVE ALL BURRS	<div> 2400 Centrepark West Drive, Suite 100 West Palm Beach, FL 33409</div> <div>TITLE: SMA JACK TO BMA JACK, FLOATING FLANGE MOUNT ADAPTER</div>		
FINISH:	SEE NOTES					
SURFACE AREA:	N/A					
PROPRIETARY  THE INFORMATION CONTAINED IN THIS DRAWING IS THE SOLE PROPERTY OF SV MICROWAVE, INC. ANY REPRODUCTION IN PART OR AS A WHOLE WITHOUT THE WRITTEN PERMISSION OF SV MICROWAVE, INC IS PROHIBITED.		THIRD ANGLE PROJECTION <div></div>	DRAWN: VMJ 07/24/01	SIZE B	CAGE CODE 95077	DWG. NO. SF1157-6009
			CHECKED: STW 07/25/01			
			APPROVED: STW 07/25/01	SCALE: 4:1		SHEET 1 OF 1

# Mouser Electronics

Authorized Distributor

Click to View Pricing, Inventory, Delivery & Lifecycle Information:

[Amphenol:](#)

[SF1157-6009](#)