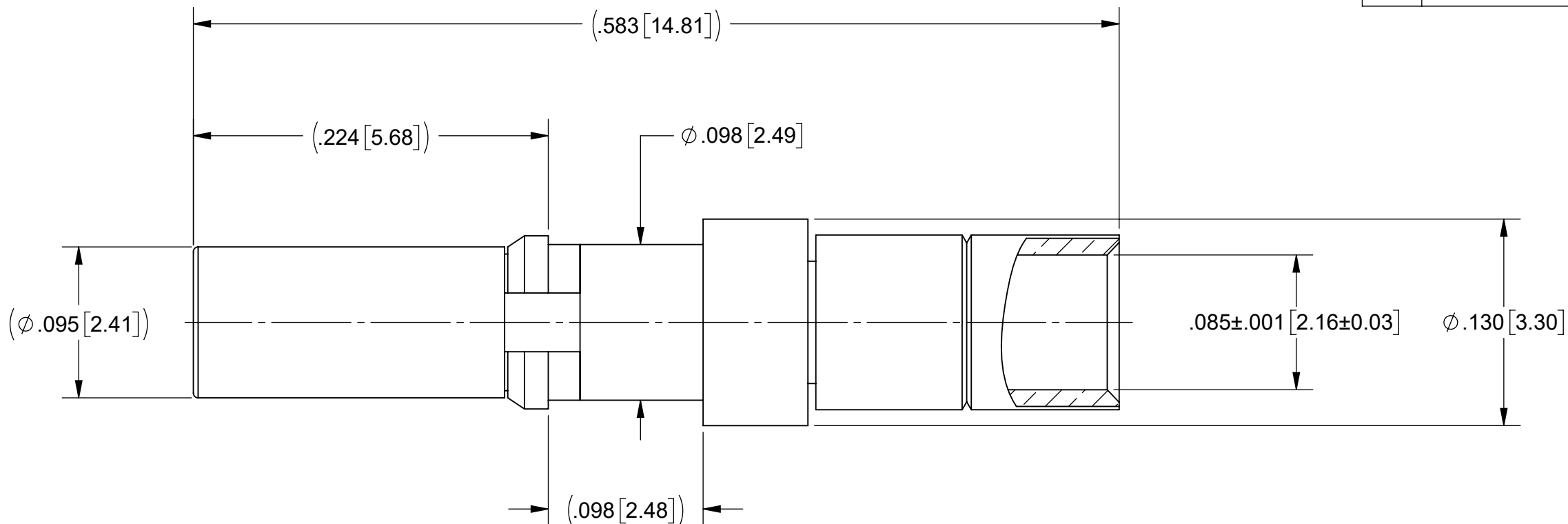


PRODUCT DATA DRAWING

REVISION HISTORY			
REV	DESCRIPTION	DATE	APPROVED
-	DCN 49087	06/19	JDT



MATERIAL:

BODY & SHROUD: STAINLESS STEEL PER AMS-5640,
ALLOY UNS S30300, TYPE 1;
OR ASTM A582 TYPE 303, COND. A

CONTACT, FERRULE
& RETAINING RING: BERYLLIUM COPPER PER ASTM B196,
ALLOY No. UNS C17300, TD04

INSULATOR: PTFE PER ASTM D1710, TYPE I, GRADE 1, CLASS B

FINISH:

BODY & SHROUD: PASSIVATED PER AMS-2700

CONTACT & FERRULE: GOLD PER ASTM B488, TYPE II,
CODE C, CLASS 1.27, OVER NICKEL PER AMS-QQ-N-290,
CLASS 1, .00005"MIN.

RETAINING RING: NICKEL PER AMS-QQ-N-290, CLASS 1, GRADE G



PERFORMANCE:

IMPEDANCE: 50 OHMS

FREQ. RANGE: DC TO 67.0 GHz

NOTES:

1. FOR USE WITH 67.3 SMPS PLUG-IN MODULES

MATERIAL:	SEE NOTES	DIMENSIONS ARE IN INCHES TOLERANCES:		UNLESS OTHERWISE SPECIFIED		 2400 Centrepark West Drive, Suite 100 West Palm Beach, FL 33409	
FINISH:	SEE NOTES	FRACTIONAL: $\pm 1/64$ ANGULAR: $X^\circ \pm 1^\circ 0'$ $X^\circ X' \pm 15'$		1) ALL DIMENSIONS ARE IN INCHES (MILLIMETERS) 2) ALL DIMENSIONS ARE AFTER PLATING 3) BREAK CORNERS & EDGES .005 R. MAX. 4) CHAM. 1ST & LAST THREADS. 5) SURFACE ROUGHNESS 63-MIL-STD-10. 6) DIA. 'S ON COMMON CENTERS TO BE CONCENTRIC WITHIN .005 T.I.R. 7) REMOVE ALL BURRS		TITLE:	
SURFACE AREA:	N/A	DECIMAL: .X $\pm .030$.XX $\pm .010$.XXX $\pm .005$		INTERPRET DIMENSIONS AND TOLERANCES PER ASME Y14.5M - 1994		VITA 67.3 SMPS PLUG-IN CONTACT FOR Ø.086 CABLE	
PROPRIETARY THE INFORMATION CONTAINED IN THIS DRAWING IS THE SOLE PROPERTY OF SV MICROWAVE, INC. ANY REPRODUCTION IN PART OR AS A WHOLE WITHOUT THE WRITTEN PERMISSION OF SV MICROWAVE, INC IS PROHIBITED.		THIRD ANGLE PROJECTION		DRAWN: SJ 06/03/19		SIZE	
				CHECKED: JDT 06/03/19		CAGE CODE B 95077	
				APPROVED: JDT 06/03/19		DWG. NO. SF3811-60059	
						SCALE: 8:1	
						SHEET 1 OF	

Mouser Electronics

Authorized Distributor

Click to View Pricing, Inventory, Delivery & Lifecycle Information:

[Amphenol:](#)

[SF3811-60059](#)