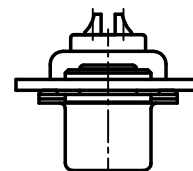
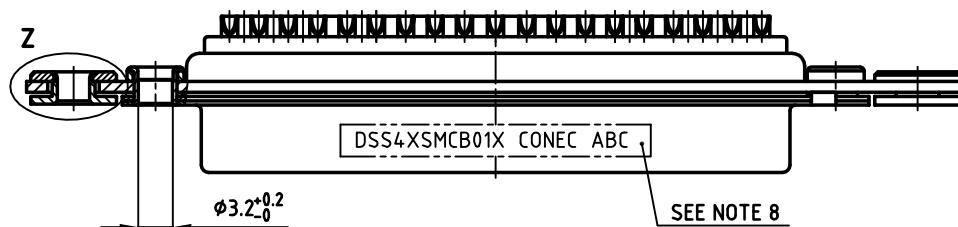
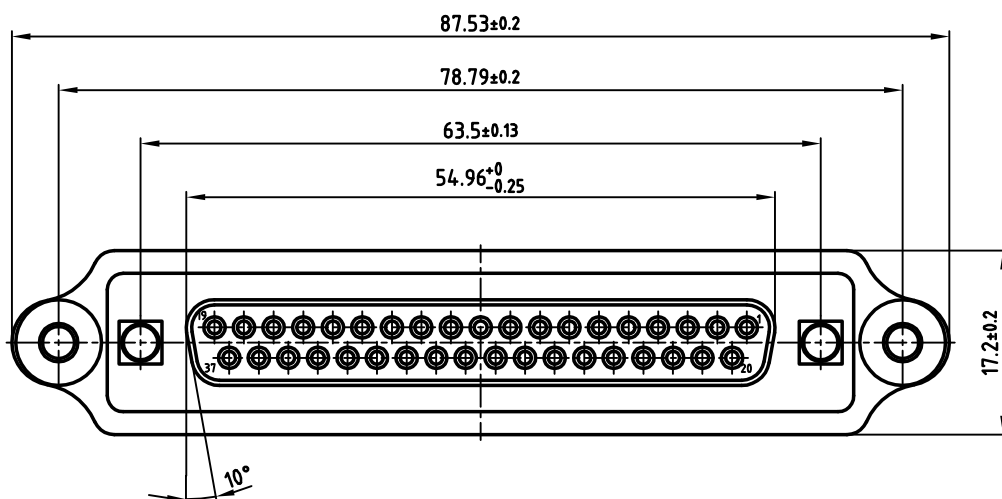
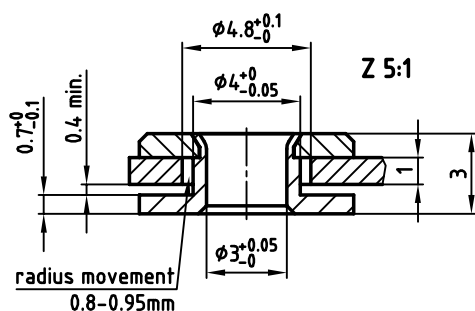
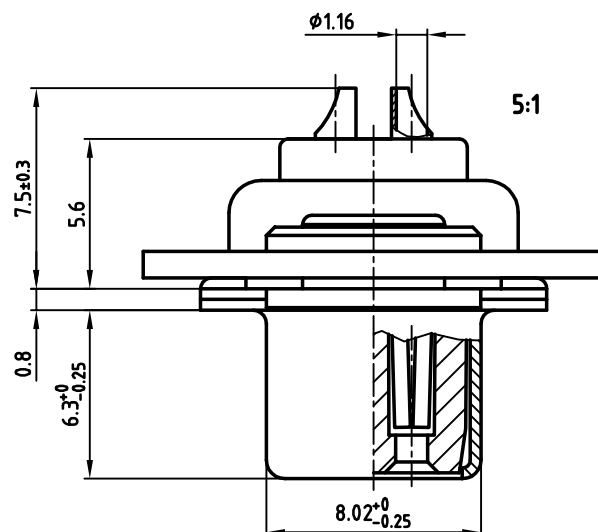


used for:	D-SUB
-----------	-------

**NOTES:**

1. METALSHELLS: STEEL; min. 315µin TIN over 40-80µin NICKEL
2. INSULATORS: PBT GF UL 94 V-0, BLACK
3. CONTACTS: COPPER ALLOY  
PLATING: 30µin HARD GOLD OVER min. 50µin NICKEL  
SOLDER CUP ACCEPTS CABLE AWG 20
4. FRAME: STEEL; NICKEL PLATED
5. FLOAT MOUNTS: COPPER ALLOY; NICKEL PLATED
6. RIVETED INSERT: COPPER ALLOY; min. 200µin TIN over 80µin NICKEL
7. COLLAR: COPPER ALLOY min. 200µin TIN over 80µin NICKEL
8. CONNECTOR IS PART MARKED: DSS4XSMCB01X CONEC ABC



Directive 2002/95/EC  
„RoHS“  
Compliant


APPROVAL # FREIGABE # DEBLOCKAGE # AUTORIZACION # APPROVAL	APPROVAL # FREIGABE # DEBLOCKAGE # AUTORIZACION # APPROVAL
CUSTOMER APPROVAL DATE:	
NAME:	TITLE:
COMPANY NAME:	
APPROVAL # FREIGABE # DEBLOCKAGE # AUTORIZACION # APPROVAL	APPROVAL # FREIGABE # DEBLOCKAGE # AUTORIZACION # APPROVAL

THIS DRAWING MAY NOT BE COPIED OR REPRODUCED IN ANY WAY, AND MAY NOT BE PASSED ON TO A THIRD PARTY WITHOUT WRITTEN PERMISSION.

OWNERSHIP AND COPYRIGHT OF CONEC GmbH

000 NOT ALTER CAD DRAWING BY HAND

a	Origin		
rev.	description	date	name

tolerance		 dim. in mm
2009	date	name
drawn	06.01.	Petker
appd.	06.01.	Mickenbecker
norm	DIN 41652	
d-old		

**CONEC®**

scale:		2:1 (5:1)	
material:		SEE NOTES	
title:			
<p align="center"><b>D-SUB FEMALE</b>  37pos. SOLDER CUP  with FRAME,FLOAT for BLIND MATING SYSTEM</p>			
dwg no:		AutoCAD 2006	DIN-A
16K2A1048			3
			sh: 1/1
part no:		DSS4XSMCB01X	

# Mouser Electronics

Authorized Distributor

Click to View Pricing, Inventory, Delivery & Lifecycle Information:

[Amphenol:](#)

[DSS4XSMCB01X](#)