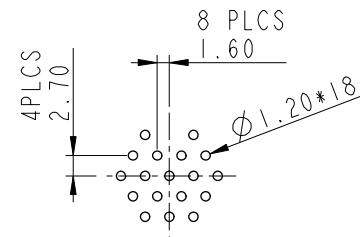
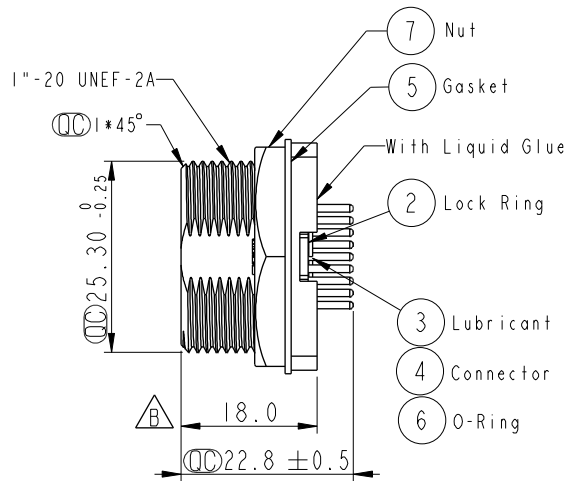
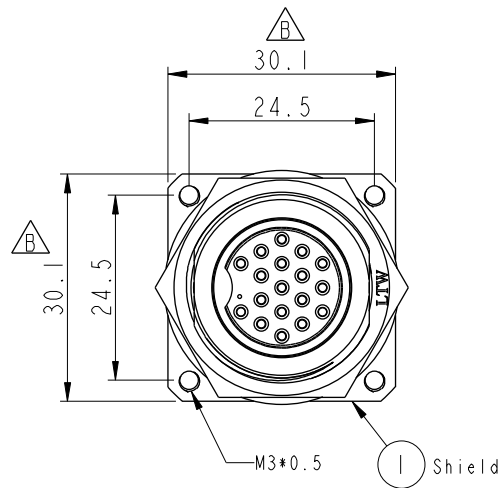
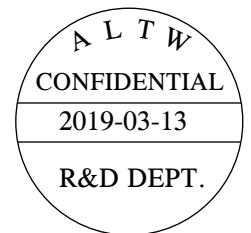


F	2	3	4	5	6	7	8
				REV.	ECN NO.	DATE	SIGN
				B	LEN-8C0036	2008/12/01	Vincent
				C	CI90314	2019/03/13	Ruru
							DESCRIPTION
							Chage Size
							Modify Note
A	2	3	4	5	6	7	8

REV.	ECN NO.	DATE	SIGN	DESCRIPTION
B	LEN-8C0036	2008/12/01	Vincent	Chage Size
C	CI90314	2019/03/13	Ruru	Modify Note

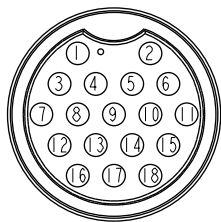


18Pin Male Connector
Female Pin PCB Layout

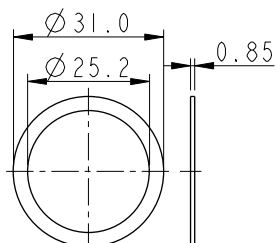


Note: \triangle

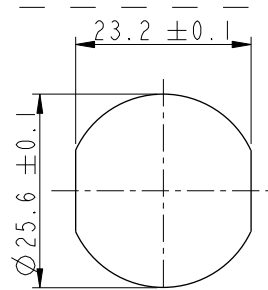
- * CC Important Dimension .
- * Waterproof Rate: IP68, Unmated
IM Dept of water in 24 hours
- * Housing: Thermoplastic, Black
- * Pin: Copper Alloy, Gold Plated
- * Shield: Metal, Nickel Plated
- * Gasket: Rubber, Black
- * Nut: Metal, Nickel Plated
- * O-Ring: Rubber, Black
- * Connector With Glue (Connector)
- * O-Ring Rub Rubber Lubricant (O-Ring)
- * Use without Waterproof Cap or Dust Cap
Panel Thickness Max: 3.5mm
- * Gasket and Nut are packed separately
in PE bags.



Pin Assignment
Front View



Gasket



Recommended
Panel Cut-Out

UNIT:mm	
TOLERANCE	
.X	±0.25
.XX	±0.1
.XXX	±0.05
ANGLES	±1°

TITLE 18Pin Shielded Male Connector Female Pin (PCB Type)			
SCALE 1:1	SIZE A4	SHEET 1 OF 1	
REV. C	WC-REV. A.3	CC : Inspection item	

Amphenol LTW
安費諾亮泰企業股份有限公司

ITEM NO DSD-18PMFP-SS8002	DRAWN BY Ruru	DATE 2019-03-13
DWG NO DSD-18PMFP-SS8002	CHECKED BY Rita	DATE 2019-03-13
CUSTOMER ALTW	APPROVED BY Max	DATE 2019-03-13

THIS DOCUMENT IS SUBJECT TO CHANGE WITHOUT NOTICE. IT IS CONFIDENTIAL AND A PROPERTY OF Amphenol LTW. DISCLOSURE TO THIRD PARTY HAS TO BE AUTHORIZED BY Amphenol LTW.

Mouser Electronics

Authorized Distributor

Click to View Pricing, Inventory, Delivery & Lifecycle Information:

[Amphenol:](#)

[DSD-18PMFP-SS8002](#)